

Quality ID #19 (NQF 0089): Diabetic Retinopathy: Communication with the Physician Managing Ongoing Diabetes Care – National Quality Strategy Domain: Communication and Care Coordination

2018 OPTIONS FOR INDIVIDUAL MEASURES:
REGISTRY ONLY

MEASURE TYPE:

Process

DESCRIPTION:

Percentage of patients aged 18 years and older with a diagnosis of diabetic retinopathy who had a dilated macular or fundus exam performed with documented communication to the physician who manages the ongoing care of the patient with diabetes mellitus regarding the findings of the macular or fundus exam at least once within 12 months

INSTRUCTIONS:

This measure is to be submitted a minimum of **once per performance period** for all patients with diabetic retinopathy seen during the performance period. It is anticipated that eligible clinicians who provide the primary management of patients with diabetic retinopathy (in either one or both eyes) will submit this measure.

Measure Submission:

The listed denominator criteria is used to identify the intended patient population. The numerator options included in this specification are used to submit the quality actions allowed by the measure. The quality-data codes listed do not need to be submitted for registry submissions; however, these codes may be submitted for those registries that utilize claims data.

DENOMINATOR:

All patients aged 18 years and older with a diagnosis of diabetic retinopathy who had a dilated macular or fundus exam performed

DENOMINATOR NOTE: *Signifies that this CPT Category I code is a non-covered service under the Medicare Part B Physician Fee Schedule (PFS). These non-covered services should be counted in the denominator population for registry-based measures.

Denominator Criteria (Eligible Cases):

Patients aged ≥ 18 years on date of encounter

AND

Diagnosis for diabetic retinopathy (ICD-10-CM): E08.311, E08.319, E08.3211, E08.3212, E08.3213, E08.3219, E08.3291, E08.3292, E08.3293, E08.3299, E08.3311, E08.3312, E08.3313, E08.3319, E08.3391, E08.3392, E08.3393, E08.3399, E08.3411, E08.3412, E08.3413, E08.3419, E08.3491, E08.3492, E08.3493, E08.3499, E08.3511, E08.3512, E08.3513, E08.3519, E08.3521, E08.3522, E08.3523, E08.3529, E08.3531, E08.3532, E08.3533, E08.3539, E08.3541, E08.3542, E08.3543, E08.3549, E08.3551, E08.3552, E08.3553, E08.3559, E08.3591, E08.3592, E08.3593, E08.3599, E09.311, E09.319, E09.3211, E09.3212, E09.3213, E09.3219, E09.3291, E09.3292, E09.3293, E09.3299, E09.3311, E09.3312, E09.3313, E09.3319, E09.3391, E09.3392, E09.3393, E09.3399, E09.3411, E09.3412, E09.3413, E09.3419, E09.3491, E09.3492, E09.3493, E09.3499, E09.3511, E09.3512, E09.3513, E09.3519, E09.3521, E09.3522, E09.3523, E09.3529, E09.3531, E09.3532, E09.3533, E09.3539, E09.3541, E09.3542, E09.3543, E09.3549, E09.3551, E09.3552, E09.3553, E09.3559, E09.3591, E09.3592, E09.3593, E09.3599, E10.311, E10.319, E10.3211, E10.3212, E10.3213, E10.3219, E10.3291, E10.3292, E10.3293, E10.3299, E10.3311, E10.3312, E10.3313, E10.3319, E10.3391, E10.3392, E10.3393, E10.3399, E10.3411, E10.3412, E10.3413, E10.3419, E10.3491, E10.3492, E10.3493, E10.3499, E10.3511, E10.3512, E10.3513, E10.3519, E10.3521, E10.3522, E10.3523, E10.3529, E10.3531, E10.3532, E10.3533, E10.3539, E10.3541, E10.3542, E10.3543, E10.3549, E10.3551,

E10.3552, E10.3553, E10.3559, E10.3591, E10.3592, E10.3593, E10.3599, E11.311, E11.319, E11.3211, E11.3212, E11.3213, E11.3219, E11.3291, E11.3292, E11.3293, E11.3299, E11.3311, E11.3312, E11.3313, E11.3319, E11.3391, E11.3392, E11.3393, E11.3399, E11.3411, E11.3412, E11.3413, E11.3419, E11.3491, E11.3492, E11.3493, E11.3499, E11.3511, E11.3512, E11.3513, E11.3519, E11.3521, E11.3522, E11.3523, E11.3529, E11.3531, E11.3532, E11.3533, E11.3539, E11.3541, E11.3542, E11.3543, E11.3549, E11.3551, E11.3552, E11.3553, E11.3559, E11.3591, E11.3592, E11.3593, E11.3599, E13.311, E13.319, E13.3211, E13.3212, E13.3213, E13.3219, E13.3291, E13.3292, E13.3293, E13.3299, E13.3311, E13.3312, E13.3313, E13.3319, E13.3391, E13.3392, E13.3393, E13.3399, E13.3411, E13.3412, E13.3413, E13.3419, E13.3491, E13.3492, E13.3493, E13.3499, E13.3511, E13.3512, E13.3513, E13.3519, E13.3521, E13.3522, E13.3523, E13.3529, E13.3531, E13.3532, E13.3533, E13.3539, E13.3541, E13.3542, E13.3543, E13.3549, E13.3551, E13.3552, E13.3553, E13.3559, E13.3591, E13.3592, E13.3593, E13.3599

AND

Patient encounter during the performance period (CPT): 92002, 92004, 92012, 92014, 99201, 99202, 99203, 99204, 99205, 99212, 99213, 99214, 99215, 99241*, 99242*, 99243*, 99244*, 99245*, 99304, 99305, 99306, 99307, 99308, 99309, 99310, 99324, 99325, 99326, 99327, 99328, 99334, 99335, 99336, 99337

WITHOUT

Telehealth Modifier: GQ, GT, 95, POS 02

AND

Dilated macular or fundus exam performed, including documentation of the presence or absence of macular edema AND level of severity of retinopathy: G8397

NUMERATOR:

Patients with documentation, at least once within 12 months, of the findings of the dilated macular or fundus exam via communication to the physician who manages the patient's diabetic care

NUMERATOR NOTE: Denominator Exception(s) are determined on the date of the denominator eligible encounter

Definitions:

Communication – May include documentation in the medical record indicating that the findings of the dilated macular or fundus exam were communicated (e.g., verbally, by letter) with the clinician managing the patient's diabetic care OR a copy of a letter in the medical record to the clinician managing the patient's diabetic care outlining the findings of the dilated macular or fundus exam.

Findings – Includes level of severity of retinopathy (e.g., mild nonproliferative, moderate nonproliferative, severe nonproliferative, very severe nonproliferative, proliferative) AND the presence or absence of macular edema.

Numerator Options:

Performance Met:

Findings of dilated macular or fundus exam communicated to the physician or other qualified health care professional managing the diabetes care **(5010F)**

OR

Denominator Exception:

Documentation of medical reason(s) for not communicating the findings of the dilated macular or fundus exam to the physician or other qualified health care professional managing the ongoing care of the patient with diabetes **(5010F with 1P)**

OR

Denominator Exception:

Documentation of patient reason(s) for not communicating the findings of the dilated macular or fundus exam to the physician or other qualified health care professional managing the ongoing care of the patient with diabetes **(5010F with 2P)**

OR

Performance Not Met:

Findings of dilated macular or fundus exam were not communicated to the physician or other qualified health care professional managing the diabetes care, reason not otherwise specified **(5010F with 8P)**

RATIONALE:

The primary care physician that manages the ongoing care of the patient with diabetes should be aware of the patient's dilated eye examination and severity of retinopathy to manage the ongoing diabetes care. Such communication is important in assisting the physician to better manage the diabetes. Several studies have shown that better management of diabetes is directly related to lower rates of development of diabetic eye disease (Diabetes Control and Complications Trial – DCCT, UK Prospective Diabetes Study –UKPDS).

CLINICAL RECOMMENDATION STATEMENTS:

The ophthalmologist should refer patients with diabetes to a primary care physician for appropriate management of their systemic condition and should communicate examination results to the physician managing the patient's ongoing diabetes care. (Good evidence; Strong recommendation)(AAO, 2016)

COPYRIGHT:

The Measures are not clinical guidelines, do not establish a standard of medical care, and have not been tested for all potential applications.

The Measures, while copyrighted, can be reproduced and distributed, without modification, for noncommercial purposes, eg, use by health care providers in connection with their practices. Commercial use is defined as the sale, license, or distribution of the Measures for commercial gain, or incorporation of the Measures into a product or service that is sold, licensed or distributed for commercial gain.

Commercial uses of the Measures require a license agreement between the user and the PCPI® Foundation (PCPI®) or the American Medical Association (AMA). Neither the American Medical Association (AMA), nor the AMA-convened Physician Consortium for Performance Improvement® (AMA-PCPI), nor PCPI, nor their members shall be responsible for any use of the Measures.

The National Committee for Quality Assurance's significant past efforts and contributions to the development and updating of the Measures is acknowledged.

AMA and PCPI encourage use of the Measures by other health care professionals, where appropriate.

THE MEASURES AND SPECIFICATIONS ARE PROVIDED "AS IS" WITHOUT WARRANTY OF ANY KIND.

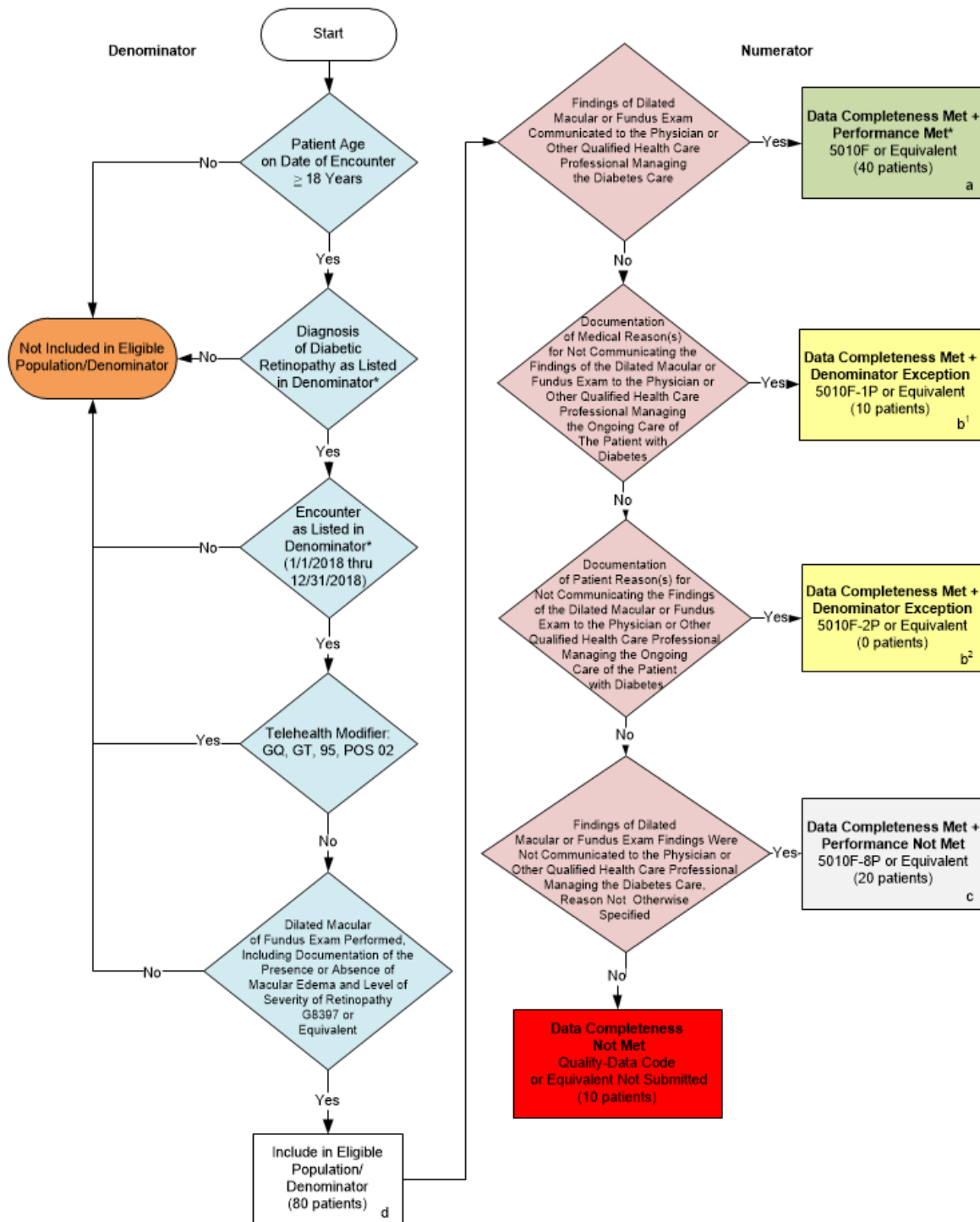
© 2017 PCPI® Foundation and American Medical Association. All Rights Reserved.

Limited proprietary coding is contained in the Measure specifications for convenience. Users of the proprietary code sets should obtain all necessary licenses from the owners of these code sets. The AMA, PCPI, and its members and former members of the AMA-PCPI disclaim all liability for use or accuracy of any Current Procedural Terminology (CPT®) or other coding contained in the specifications.

CPT® contained in the Measure specifications is copyright 2004-2017 American Medical Association. LOINC® is copyright 2004-2017 Regenstrief Institute, Inc. This material contains SNOMED CLINICAL TERMS (SNOMED CT®)

copyright 2004-2017 International Health Terminology Standards Development Organisation. ICD-10 is copyright 2017 World Health Organization. All Rights Reserved.

**2018 Registry Flow for Quality ID #19 NQF #0089:
Diabetic Retinopathy: Communication with the Physician Managing Ongoing Diabetes Care**



*See the posted Measure Specification for specific coding and instructions to submit this measure.

CPT only copyright 2017 American Medical Association. All rights reserved. The measure diagrams were developed by CMS as a supplemental resource to be used in conjunction with the measure specifications. They should not be used alone or as a substitution for the measure specification.

NOTE: Submission Frequency: Patient-process

v2

**2018 Registry Flow for Quality ID #19 NQF #0089:
Diabetic Retinopathy: Communication with the Physician Managing Ongoing Diabetes Care**

SAMPLE CALCULATIONS:

Data Completeness=

$$\frac{\text{Performance Met (a=40 patients) + Denominator Exception (b^1+b^2=10 patients) + Performance Not Met (c=20 patients)}}{\text{Eligible Population / Denominator (d=80 patients)}} = \frac{70 \text{ patients}}{80 \text{ patients}} = 87.50\%$$

Performance Rate=

$$\frac{\text{Performance Met (a=40 patients)}}{\text{Data Completeness Numerator (70 patients) - Denominator Exception (b^1+b^2=10 patients)}} = \frac{40 \text{ patients}}{60 \text{ patients}} = 66.67\%$$

*See the posted Measure Specification for specific coding and instructions to submit this measure.
NOTE: Submission Frequency: Patient-process

CPT only copyright 2017 American Medical Association. All rights reserved.
v2

**2018 Registry Flow for Quality ID #19 NQF #0089:
Diabetic Retinopathy: Communication with the Physician Managing Ongoing Diabetes Care**

Please refer to the specific section of the specification to identify the denominator and numerator information for use in submitting this Individual Specification. This flow is for registry data submission.

1. Start with Denominator
2. Check Patient Age:
 - a. If the Age is greater than or equal to 18 years of age on Date of Service equals No during the measurement period, do not include in Eligible Patient Population. Stop Processing.
 - b. If the Age is greater than or equal to 18 years of age on Date of Service equals Yes during the measurement period, proceed to check Patient Diagnosis.
3. Check Patient Diagnosis:
 - a. If Diagnosis of Diabetic Retinopathy as Listed in the Denominator equals No, do not include in Eligible Patient Population. Stop Processing.
 - b. If Diagnosis of Diabetic Retinopathy as Listed in the Denominator equals Yes, proceed to check Encounter Performed.
4. Check Encounter Performed:
 - a. If Encounter as Listed in the Denominator equals No, do not include in Eligible Patient Population. Stop Processing.
 - b. If Encounter as Listed in the Denominator equals Yes, proceed to check Telehealth Modifier.
5. Check Telehealth Modifier:
 - a. If Telehealth Modifier equals Yes, do not include in Eligible Patient Population. Stop Processing.
 - b. If Telehealth Modifier equals No, proceed to check Dilated Macular or Fundus Exam Performed.
6. Check Dilated Macular or Fundus Exam Performed:
 - a. If Dilated Macular or Fundus Exam Performed equals No, do not include in Eligible Patient Population. Stop Processing.
 - b. If Dilated Macular or Fundus Exam Performed equals Yes, include in the Eligible Population.
7. Denominator Population:
 - a. Denominator Population is all Eligible Patients in the Denominator. Denominator is represented as Denominator in the Sample Calculation listed at the end of this document. Letter d equals 80 patients in the Sample Calculation.
8. Start Numerator

9. Check Findings of Dilated Macular or Fundus Exam Communicated to the Physician or Other Qualified Health Care Professional Managing Diabetes Care:
 - a. If Findings of Dilated Macular or Fundus Exam Communicated to the Physician or Other Qualified Health Care Professional Managing Diabetes Care equals Yes, include in Data Completeness Met and Performance Met.
 - b. Data Completeness Met and Performance Met letter is represented in the Data Completeness and Performance Rate in the Sample Calculation listed at the end of this document. Letter a equals 40 patients in the Sample Calculation.
 - c. If Findings of Dilated Macular or Fundus Exam Communicated to the Physician or Other Qualified Health Care Professional Managing Diabetes Care equals No, proceed to Documentation of Medical Reason(s) for Not Communicating the Findings of the Dilated Macular or Fundus Exam to the Physician or Other Qualified Health Care Professional Managing the Ongoing Care of the Patient with Diabetes.
10. Check Documentation of Medical Reason(s) for Not Communicating the Findings of the Dilated Macular or Fundus Exam to the Physician or Other Qualified Health Care Professional Managing the Ongoing Care of the Patient with Diabetes:
 - a. If Documentation of Medical Reason(s) for Not Communicating the Findings of the Dilated Macular or Fundus Exam to the Physician or Other Qualified Health Care Professional Managing the Ongoing Care of the Patient with Diabetes equals Yes, include in Data Completeness Met and Denominator Exception.
 - b. Data Completeness Met and Denominator Exception letter is represented in the Data Completeness and Performance Rate in the Sample Calculation listed at the end of this document. Letter b¹ equals 10 patients in the Sample Calculation.
 - c. If Documentation of Medical Reason(s) for Not Communicating the Findings of the Dilated Macular or Fundus Exam to the Physician or Other Qualified Health Care Professional Managing the Ongoing Care of the Patient with Diabetes equals No, proceed to Documentation of Patient Reason(s) for Not Communicating the Findings of the Dilated Macular or Fundus Exam to the Physician or other Qualified Health Care Professional Managing the Ongoing Care of the Patient with Diabetes.
11. Check Documentation of Patient Reason(s) for Not Communicating the Findings of the Dilated Macular or Fundus Exam to the Physician or Other Qualified Health Care Professional Managing the Ongoing Care of the Patient with Diabetes:
 - a. If Documentation of Patient Reason(s) for Not Communicating the Findings of the Dilated Macular or Fundus Exam to the Physician or Other Qualified Health Care Professional Managing the Ongoing Care of the Patient with Diabetes equals Yes, include in Data Completeness Met and Denominator Exception.
 - b. Data Completeness Met and Denominator Exception letter is represented in the Data Completeness and Performance Rate in the Sample Calculation listed at the end of this document. Letter b² equals 0 patients in the Sample Calculation.
 - c. If Documentation of Patient Reason(s) for Not Communicating the Findings of the Dilated Macular or Fundus Exam to the Physician or Other Qualified Health Care Professional Managing the Ongoing Care of the Patient with Diabetes equals No, proceed to Findings of Dilated Macular or Fundus Exam Were Not Communicated to the Physician or Other Qualified Health Care Professional Managing the Diabetes Care, Reason Not Otherwise Specified.

12. Check Findings of Dilated Macular or Fundus Exam Were Not Communicated to the Physician or Other Qualified Health Care Professional Managing the Diabetes Care, Reason Not Otherwise Specified:
 - a. If Findings of Dilated Macular or Fundus Exam Were Not Communicated to the Physician or Other Qualified Health Care Professional Managing the Diabetes Care, Reason Not Otherwise Specified equals Yes, include in Data Completeness Met and Performance Not Met.
 - b. Data Completeness Met and Performance Not Met letter is represented in the Data Completeness in the Sample Calculation listed at the end of this document. Letter c equals 20 patients in the Sample Calculation.
 - c. If Findings of Dilated Macular or Fundus Exam Were Not Communicated to the Physician or Other Qualified Health Care Professional Managing the Diabetes Care, Reason Not Otherwise Specified equals No, proceed to Data Completeness Not Met.

13. Check Data Completeness Not Met:
 - a. If Data Completeness Not Met, the Quality Data Code or equivalent was not submitted. 10 patients have been subtracted from the Data Completeness Numerator in the Sample Calculation.

SAMPLE CALCULATIONS:

Data Completeness=

$$\frac{\text{Performance Met (a=40 patients)} + \text{Denominator Exception (b}^1\text{+b}^2\text{=10 patients)} + \text{Performance Not Met (c=20 patients)}}{\text{Eligible Population / Denominator (d=80 patients)}} = \frac{70 \text{ patients}}{80 \text{ patients}} = 87.50\%$$

Performance Rate=

$$\frac{\text{Performance Met (a=40 patients)}}{\text{Data Completeness Numerator (70 patients) – Denominator Exception (b}^1\text{+b}^2\text{=10 patients)}} = \frac{40 \text{ patients}}{60 \text{ patients}} = 66.67\%$$