

Quality ID #177: Rheumatoid Arthritis (RA): Periodic Assessment of Disease Activity – National Quality Strategy Domain: Effective Clinical Care Measure

2018 OPTIONS FOR INDIVIDUAL MEASURES:
REGISTRY ONLY

MEASURE TYPE:
Process

DESCRIPTION:
Percentage of patients aged 18 years and older with a diagnosis of rheumatoid arthritis (RA) who have an assessment and classification of disease activity within 12 months

INSTRUCTIONS:
This measure is to be submitted a minimum of **once per performance period** for patients with a diagnosis of RA seen during the performance period. This measure may be submitted by eligible clinicians who perform the quality actions described in the measure based on the services provided and the measure-specific denominator coding.

Measure Submission:
The listed denominator criteria is used to identify the intended patient population. The numerator options included in this specification are used to submit the quality actions allowed by the measure. The quality-data codes listed do not need to be submitted for registry submissions; however, these codes may be submitted for those registries that utilize claims data.

DENOMINATOR:
Patients aged 18 years and older with a diagnosis of RA

Denominator Criteria (Eligible Cases):

Patients aged \geq 18 years on date of encounter

AND

Diagnosis for rheumatoid arthritis (RA) (ICD-10-CM): M05.00, M05.011, M05.012, M05.019, M05.021, M05.022, M05.029, M05.031, M05.032, M05.039, M05.041, M05.042, M05.049, M05.051, M05.052, M05.059, M05.061, M05.062, M05.069, M05.071, M05.072, M05.079, M05.09, M05.111, M05.112, M05.119, M05.121, M05.122, M05.129, M05.131, M05.132, M05.139, M05.141, M05.142, M05.149, M05.151, M05.152, M05.159, M05.161, M05.162, M05.169, M05.171, M05.172, M05.179, M05.19, M05.20, M05.211, M05.212, M05.219, M05.221, M05.222, M05.229, M05.231, M05.232, M05.239, M05.241, M05.242, M05.249, M05.251, M05.252, M05.259, M05.261, M05.262, M05.269, M05.271, M05.272, M05.279, M05.29, M05.30, M05.311, M05.312, M05.319, M05.321, M05.322, M05.329, M05.331, M05.332, M05.339, M05.341, M05.342, M05.349, M05.351, M05.352, M05.359, M05.361, M05.362, M05.369, M05.371, M05.372, M05.379, M05.39, M05.40, M05.411, M05.412, M05.419, M05.421, M05.422, M05.429, M05.431, M05.432, M05.439, M05.441, M05.442, M05.449, M05.451, M05.452, M05.459, M05.461, M05.462, M05.469, M05.471, M05.472, M05.479, M05.49, M05.50, M05.511, M05.512, M05.519, M05.521, M05.522, M05.529, M05.531, M05.532, M05.539, M05.541, M05.542, M05.549, M05.551, M05.552, M05.559, M05.561, M05.562, M05.569, M05.571, M05.572, M05.579, M05.59, M05.60, M05.611, M05.612, M05.619, M05.621, M05.622, M05.629, M05.631, M05.632, M05.639, M05.641, M05.642, M05.649, M05.651, M05.652, M05.659, M05.661, M05.662, M05.669, M05.671, M05.672, M05.679, M05.69, M05.70, M05.711, M05.712, M05.719, M05.721, M05.722, M05.729, M05.731, M05.732, M05.739, M05.741, M05.742, M05.749, M05.751, M05.752, M05.759, M05.761, M05.762, M05.769, M05.771, M05.772, M05.779, M05.79, M05.80, M05.811, M05.812, M05.819, M05.821, M05.822, M05.829, M05.831, M05.832, M05.839, M05.841, M05.842, M05.849, M05.851, M05.852, M05.859, M05.861, M05.862, M05.869, M05.871, M05.872, M05.879, M05.89, M05.9, M06.00, M06.011, M06.012, M06.019, M06.021, M06.022,

M06.029, M06.031, M06.032, M06.039, M06.041, M06.042, M06.049, M06.051, M06.052, M06.059, M06.061, M06.062, M06.069, M06.071, M06.072, M06.079, M06.08, M06.09, M06.1, M06.30, M06.311, M06.312, M06.319, M06.321, M06.322, M06.329, M06.331, M06.332, M06.339, M06.341, M06.342, M06.349, M06.351, M06.352, M06.359, M06.361, M06.362, M06.369, M06.371, M06.372, M06.379, M06.38, M06.39, M06.80, M06.811, M06.812, M06.819, M06.821, M06.822, M06.829, M06.831, M06.832, M06.839, M06.841, M06.842, M06.849, M06.851, M06.852, M06.859, M06.861, M06.862, M06.869, M06.871, M06.872, M06.879, M06.88, M06.89, M06.9

AND

Patient encounter during the performance period (CPT or HCPCS): 99201, 99202, 99203, 99204, 99205, 99212, 99213, 99214, 99215, 99341, 99342, 99343, 99344, 99345, 99347, 99348, 99349, 99350, G0402

WITHOUT

Telehealth Modifier: GQ, GT, 95, POS 02

NUMERATOR:

Patients with disease activity assessed by a standardized descriptive or numeric scale or composite index and classified into one of the following categories: low, moderate or high, at least once within 12 months

Definition:

Assessment and Classification of Disease Activity – Assesses if physicians are utilizing a standardized, systematic approach for evaluating the level of disease activity. The scales/instruments listed are examples of how to define activity level and cut-off points can differ by scale. Standardized descriptive or numeric scales and/or composite indexes could include but are not limited to: DAS28, SDAI, CDAI, RDAI, RAPID.

NUMERATOR NOTE: *If the physician uses an alternate, standardized, systematic approach for evaluating the level of disease activity other than the tools listed above, that will be numerator compliant.*

Numerator Options:

Performance Met: Rheumatoid arthritis (RA) disease activity, low (3470F)

OR

Performance Met: Rheumatoid arthritis (RA) disease activity, moderate (3471F)

OR

Performance Met: Rheumatoid arthritis (RA) disease activity, high (3472F)

OR

Performance Not Met: Disease activity not assessed and classified, reason not otherwise specified (3470F with 8P)

RATIONALE:

After establishing a diagnosis of RA, risk assessment is crucial for guiding optimal treatment. For the purposes of selecting therapies, physicians should consider the patient's disease activity at the time of the treatment decisions.

CLINICAL RECOMMENDATION STATEMENTS:

Several indices to measure RA disease activity have been developed each of which has advantages and disadvantages. Evidence-based guidelines require clear definitions of disease activity to make rational therapeutic choices, but it is not possible or appropriate to mandate use of a single disease activity score for the individual physician, and different studies have used different definitions. Therefore, the TFP was asked to consider a combined estimation of disease activity, which allowed reference to many past definitions. With these instruments as our guide, we rated RA disease activity in an ordinal manner as low, moderate, or high. (ACR, 2008)

COPYRIGHT:

The Measures are not clinical guidelines, do not establish a standard of medical care, and have not been tested for all potential applications.

The Measures, while copyrighted, can be reproduced and distributed, without modification, for noncommercial purposes, e.g., use by health care providers in connection with their practices. Commercial use is defined as the sale, license, or distribution of the Measures for commercial gain, or incorporation of the Measures into a product or service that is sold, licensed or distributed for commercial gain.

Commercial uses of the Measures require a license agreement between the user and the American Medical Association (AMA), [on behalf of the Physician Consortium for Performance Improvement® (PCPI®)] or American College of Rheumatology (ACR). Neither the AMA, ACR, PCPI, nor its members shall be responsible for any use of the Measures.

The AMA's, PCPI's and National Committee for Quality Assurance's significant past efforts and contributions to the development and updating of the Measures is acknowledged. ACR is solely responsible for the review and enhancement ("Maintenance") of the Measures as of July 25, 2014.

ACR encourages use of the Measures by other health care professionals, where appropriate.

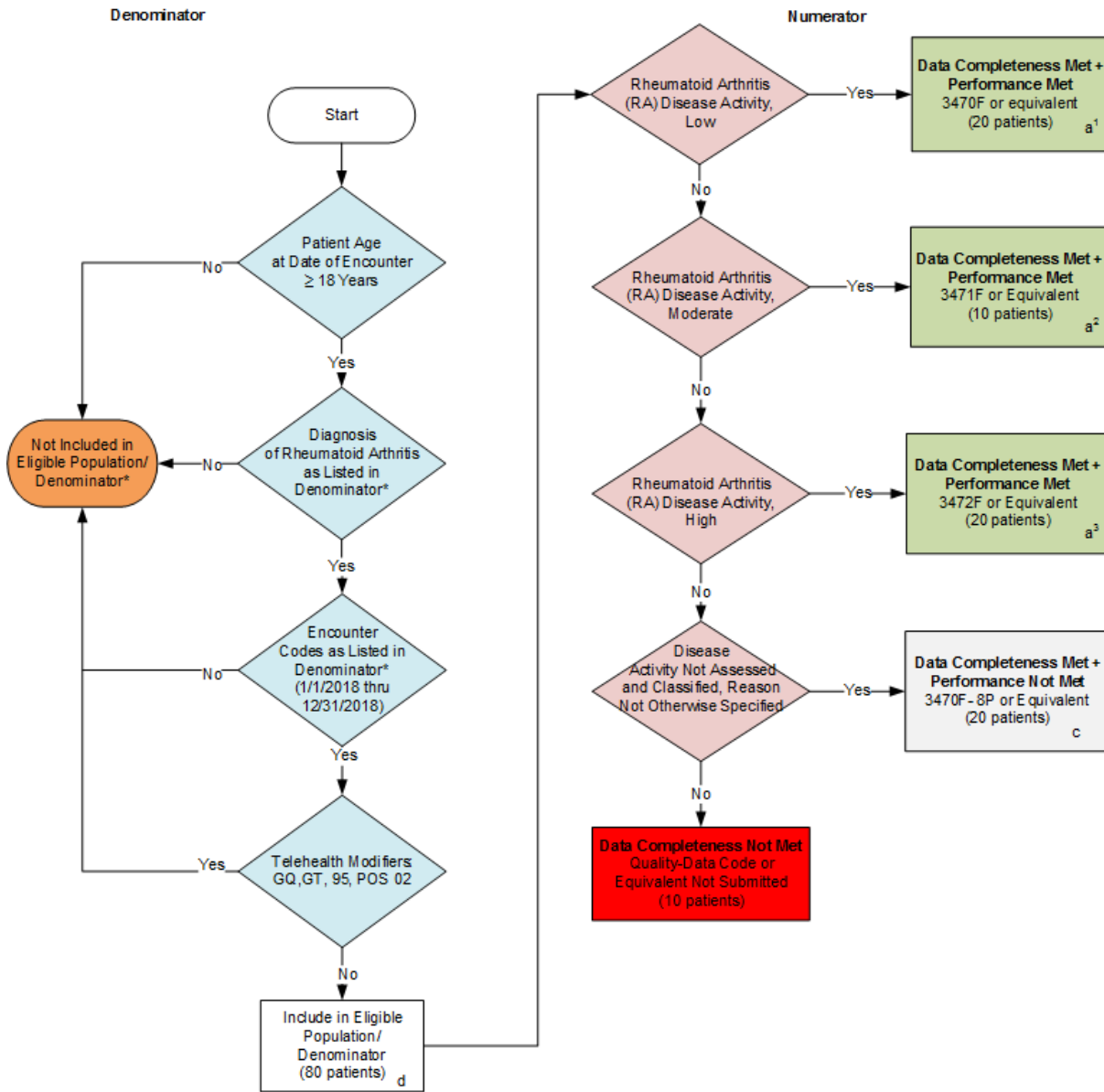
THE MEASURES AND SPECIFICATIONS ARE PROVIDED "AS IS" WITHOUT WARRANTY OF ANY KIND.

© 2014 American Medical Association and American College of Rheumatology. All Rights Reserved. Applicable FARS/DFARS Restrictions Apply to Government Use.

Limited proprietary coding is contained in the Measure specifications for convenience. Users of the proprietary code sets should obtain all necessary licenses from the owners of these code sets. The AMA, ACR, the PCPI and its members disclaim all liability for use or accuracy of any Current Procedural Terminology (CPT®) or other coding contained in the specifications.

CPT® contained in the Measures specifications is copyright 2004-2017 American Medical Association. LOINC® copyright 2004-2017 Regenstrief Institute, Inc. SNOMED CLINICAL TERMS (SNOMED CT®) copyright 2004-2017 College of American Pathologists. All Rights Reserved.

**2018 Registry Flow for Quality ID #177:
Rheumatoid Arthritis (RA): Periodic Assessment of Disease Activity**



SAMPLE CALCULATIONS:

Data Completeness=
 Performance Met ($a^1+a^2+a^3=50$ patients) + Performance Not Met ($c=20$ patients) = 70 patients = 87.50%
 Eligible Population / Denominator ($d=80$ patients) = 80 patients

Performance Rate=
 $\frac{\text{Performance Met (} a^1+a^2+a^3=50 \text{ patients)}}{\text{Data Completeness Numerator (} 70 \text{ patients)}} = \frac{50 \text{ patients}}{70 \text{ patients}} = 71.42\%$

* See the posted Measure Specification for specific coding and instructions to submit this measure.
 NOTE: Submission Frequency: Patient-Process

CPT only copyright 2017 American Medical Association. All rights reserved.
 The measure diagrams were developed by CMS as a supplemental resource to be used in conjunction with the measure specifications. They should not be used alone or as a substitution for the measure specification.

v2

2018 Registry Flow for Quality ID
#177: Rheumatoid Arthritis (RA): Periodic Assessment of Disease Activity

Please refer to the specific section of the specification to identify the denominator and numerator information for use in submitting this Individual Specification. This flow is for registry-data submission.

1. Start with Denominator
2. Check Patient Age:
 - a. If the Age is greater than or equal to 18 years of age on Date of Service and equals No during the measurement period, do not include in Eligible Patient Population. Stop Processing.
 - b. If the Age is greater than or equal to 18 years of age on Date of Service and equals Yes during the measurement period, proceed to check Patient Diagnosis.
3. Check Patient Diagnosis:
 - a. If Diagnosis of Rheumatoid Arthritis as Listed in the Denominator equals No, do not include in Eligible Patient Population. Stop Processing.
 - b. If Diagnosis of Rheumatoid Arthritis as Listed in the Denominator equals Yes, proceed to check Encounter Performed.
4. Check Encounter Performed:
 - a. If Encounter as Listed in the Denominator equals No, do not include in Eligible Patient Population. Stop Processing.
 - b. If Encounter as Listed in the Denominator equals Yes, proceed to check Telehealth Modifier.
5. Check Telehealth Modifier:
 - a. If Telehealth Modifier equals Yes, do not include in Eligible Patient Population. Stop Processing.
 - b. If Telehealth Modifier equals No, include in the Eligible Population.
6. Denominator Population:
 - a. Denominator Population is all Eligible Patients in the Denominator. Denominator is represented as Denominator in the Sample Calculation listed at the end of this document. Letter d equals 80 patients in the Sample Calculation.
7. Start Numerator
8. Check Rheumatoid Arthritis (RA) Disease Activity, Low:
 - a. If Rheumatoid Arthritis (RA) Disease Activity, Low equals Yes, include in Data Completeness Met and Performance Met.
 - b. Data Completeness Met and Performance Met letter is represented in the Data Completeness and Performance Rate in the Sample Calculation listed at the end of this document. Letter a1 equals 20 patients in the Sample Calculation.

- c. If Rheumatoid Arthritis (RA) Disease Activity, Low equals No, proceed to Rheumatoid Arthritis (RA) Disease Activity, Moderate.
9. Check Rheumatoid Arthritis (RA) Disease Activity, Moderate:
 - a. If Rheumatoid Arthritis (RA) Disease Activity, Moderate equals Yes, include in Data Completeness Met and Performance Met.
 - b. Data Completeness Met and Performance Met is represented in the Data Completeness and Performance Rate in the Sample Calculation listed at the end of this document. Letter a2 equals 10 patients in the Sample Calculation.
 - c. If Rheumatoid Arthritis (RA) Disease Activity, Moderate equals No, proceed to Rheumatoid Arthritis (RA) Disease Activity, High.
 10. Check Rheumatoid Arthritis (RA) Disease Activity, High:
 - a. If Rheumatoid Arthritis (RA) Disease Activity, High equals Yes, include in Data Completeness Met and Performance Met.
 - b. Data Completeness Met and Performance Met is represented in the Data Completeness and Performance Rate in the Sample Calculation listed at the end of this document. Letter a3 equals 20 patients in the Sample Calculation.
 - c. If Rheumatoid Arthritis (RA) Disease Activity, High equals No, proceed to Disease Activity Not Assessed and Classified, Reason Not Otherwise Specified.
 11. Check Disease Activity Not Assessed and Classified, Reason Not Otherwise Specified:
 - a. If Disease Activity Not Assessed and Classified, Reason Not Otherwise Specified equals Yes, include in Data Completeness Met and Performance Not Met.
 - b. Data Completeness Met and Performance Not Met is represented in the Data Completeness in the Sample Calculation listed at the end of this document. Letter c equals 20 patients in the Sample Calculation.
 - c. If Disease Activity Not Assessed and Classified, Reason Not Otherwise Specified equals No, proceed to Data Completeness Not Met.
 12. Check Data Completeness Not Met
 - a. If Data Completeness Not Met, the Quality Data Code or equivalent was not submitted. 10 patients has been subtracted from the Data Completeness Numerator in Sample Calculation.

SAMPLE CALCULATIONS:

Data Completeness=

$$\frac{\text{Performance Met (a}^1+\text{a}^2+\text{a}^3=50 \text{ patients)} + \text{Performance Not Met (c=20 patients)}}{\text{Eligible Population / Denominator (d=80 patients)}} = \frac{70 \text{ patients}}{80 \text{ patients}} = 87.50\%$$

Performance Rate=

$$\frac{\text{Performance Met (a}^1+\text{a}^2+\text{a}^3=50 \text{ patients)}}{\text{Data Completeness Numerator (70 patients)}} = \frac{50 \text{ patients}}{70 \text{ patients}} = 71.42\%$$