

**Quality ID #191 (NQF 0565): Cataracts: 20/40 or Better Visual Acuity within 90 Days Following Cataract Surgery – National Quality Strategy Domain: Effective Clinical Care**

**2018 OPTIONS FOR INDIVIDUAL MEASURES:**  
**REGISTRY ONLY**

**MEASURE TYPE:**

Outcome

**DESCRIPTION:**

Percentage of patients aged 18 years and older with a diagnosis of uncomplicated cataract who had cataract surgery and no significant ocular conditions impacting the visual outcome of surgery and had best-corrected visual acuity of 20/40 or better (distance or near) achieved within 90 days following the cataract surgery

**INSTRUCTIONS:**

This measure is to be calculated **each time** a procedure for uncomplicated cataracts is performed during the performance period. This measure is intended to reflect the quality of services provided for the patients receiving uncomplicated cataract surgery. This measure is to be submitted by the clinician performing the cataract surgery procedure. Clinicians who provide only preoperative or postoperative management of cataract patients are not eligible for this measure.

**Note: This is an outcome measure and can be calculated solely using registry data.**

- *For patients who receive the cataract surgical procedures specified in the denominator coding, it should be reported whether or not the patient had best-corrected visual acuity of 20/40 or better achieved within 90 days following cataract surgery.*
- *Patients who have any of the listed significant ocular conditions [comorbid] in the exclusion criteria should be removed from the denominator; these patients have existing ocular conditions that could impact the outcome of surgery and are not included in the measure calculation for those patients who have best-corrected visual acuity of 20/40 or better (distance or near) achieved within 90 days following the cataract surgery.*
- *Include only procedures performed through **September 30th** of the performance period. This will allow the post-operative period to occur within the performance period.*

**Measure Reporting:**

The listed denominator criteria is used to identify the intended patient population. The numerator options included in this specification are used to submit the quality actions allowed by the measure. The quality-data codes listed do not need to be submitted for registry-based submissions; however, these codes may be submitted for those registries that utilize claims data.

**DENOMINATOR:**

All patients aged 18 years and older who had cataract surgery and no significant ocular conditions impacting the visual outcome of surgery

**Denominator Criteria (Eligible Cases):**

Patients aged  $\geq 18$  years on date of encounter

**AND**

**Patient encounter during the performance period (CPT):** 66840, 66850, 66852, 66920, 66930, 66940, 66982, 66983, 66984

**WITHOUT**

**Modifier:** 56 or 55

**AND NOT****DENOMINATOR EXCLUSION:****Any of the following significant ocular conditions that impact the visual outcome of surgery***(Patients with documentation of the presence of one or more of the following significant ocular conditions that impact the visual outcome of surgery prior to date of cataract surgery which is still active at the time of the cataract surgery are excluded from the measure calculation)***Table 1 - Significant Ocular Conditions**

<b>Significant Ocular Condition</b>	<b>Corresponding ICD-10-CM Codes</b>
Acute and Subacute Iridocyclitis	H20.00, H20.011, H20.012, H20.013, H20.019, H20.021, H20.022, H20.023, H20.029, H20.031, H20.032, H20.033, H20.039, H20.041, H20.042, H20.043, H20.049, H20.051, H20.052, H20.053, H20.059
Amblyopia	H53.011, H53.012, H53.013, H53.019, H53.021, H53.022, H53.023, H53.029, H53.031, H53.032, H53.033, H53.039, H53.041, H53.042, H53.043, H53.049
Burn Confined to Eye and Adnexa	T26.00XA, T26.01XA, T26.02XA, T26.10XA, T26.11XA, T26.12XA, T26.20XA, T26.21XA, T26.22XA, T26.30XA, T26.31XA, T26.32XA, T26.40XA, T26.41XA, T26.42XA, T26.50XA, T26.51XA, T26.52XA, T26.60XA, T26.61XA, T26.62XA, T26.70XA, T26.71XA, T26.72XA, T26.80XA, T26.81XA, T26.82XA, T26.90XA, T26.91XA, T26.92XA
Cataract Secondary to Ocular Disorders	H26.211, H26.212, H26.213, H26.219, H26.221, H26.222, H26.223, H26.229
Central Corneal Ulcer	H16.011, H16.012, H16.013, H16.019
Certain Types of Iridocyclitis	H20.20, H20.21, H20.22, H20.23, H20.811, H20.812, H20.813, H20.819, H20.821, H20.822, H20.823, H20.829, H20.9, H40.40X0
Chorioretinal Scars	H31.001, H31.002, H31.003, H31.009, H31.011, H31.012, H31.013, H31.019, H31.021, H31.022, H31.023, H31.029, H31.091, H31.092, H31.093, H31.099
Choroidal Degenerations	H35.33
Choroidal Detachment	H31.411, H31.412, H31.413, H31.419
Choroidal Hemorrhage and Rupture	H31.301, H31.302, H31.303, H31.309, H31.311, H31.312, H31.313, H31.319, H31.321, H31.322, H31.323, H31.329
Chronic Iridocyclitis	A18.54, H20.10, H20.11, H20.12, H20.13, H20.9
Cloudy Cornea	H17.00, H17.01, H17.02, H17.03, H17.10, H17.11, H17.12, H17.13, H17.811, H17.812, H17.813, H17.819, H17.821, H17.822, H17.823, H17.829
Corneal Edema	H18.10, H18.11, H18.12, H18.13, H18.20, H18.221, H18.222, H18.223, H18.229, H18.231, H18.232, H18.233, H18.239, H18.421, H18.422, H18.423, H18.429, H18.43
Corneal Opacity and Other Disorders of Cornea	H17.00, H17.01, H17.02, H17.03, H17.10, H17.11, H17.12, H17.13, H17.89, H17.9

Significant Ocular Condition	Corresponding ICD-10-CM Codes
Degeneration of Macula and Posterior Pole	H35.30, H35.3110, H35.3111, H35.3112, H35.3113, H35.3114, H35.3120, H35.3121, H35.3122, H35.3123, H35.3124, H35.3130, H35.3131, H35.3132, H35.3133, H35.3134, H35.3190, H35.3191, H35.3192, H35.3193, H35.3194, H35.3210, H35.3211, H35.3212, H35.3213, H35.3220, H35.3221, H35.3222, H35.3223, H35.3230, H35.3231, H35.3232, H35.3233, H35.3290, H35.3291, H35.3292, H35.3293, H35.341, H35.342, H35.343, H35.349, H35.351, H35.352, H35.353, H35.359, H35.361, H35.362, H35.363, H35.369, H35.371, H35.372, H35.373, H35.379, H35.381, H35.382, H35.383, H35.389
Degenerative Disorders of Globe	H44.20, H44.2A1, H44.2A2, H44.2A3, H44.2A9, H44.2B1, H44.2B2, H44.2B3, H44.2B9, H44.2C1, H44.2C2, H44.2C3, H44.2C9, H44.2D1, H44.2D2, H44.2D3, H44.2D9, H44.2E1, H44.2E2, H44.21, H44.22, H44.23, H44.311, H44.312, H44.313, H44.319, H44.321, H44.322, H44.323, H44.329, H44.391, H44.392, H44.393, H44.399
Diabetic Macular Edema	E08.311, E08.3211, E08.3212, E08.3213, E08.3219, E08.3311, E08.3312, E08.3313, E08.3319, E08.3411, E08.3412, E08.3413, E08.3419, E08.3511, E08.3512, E08.3513, E08.3519, E08.3521, E08.3522, E08.3523, E08.3529, E08.3531, E08.3532, E08.3533, E08.3539, E08.3541, E08.3542, E08.3543, E08.3549, E08.3551, E08.3552, E08.3553, E08.3559, E08.37X1, E08.37X2, E08.37X3, E08.37X9, E09.311, E09.3211, E09.3212, E09.3213, E09.3219, E09.3311, E09.3312, E09.3313, E09.3319, E09.3411, E09.3412, E09.3413, E09.3419, E09.3511, E09.3512, E09.3513, E09.3519, E09.3521, E09.3522, E09.3523, E09.3529, E09.3531, E09.3532, E09.3533, E09.3539, E09.3541, E09.3542, E09.3543, E09.3549, E09.3551, E09.3552, E09.3553, E09.3559, E09.37X1, E09.37X2, E09.37X3, E09.37X9, E10.311, E10.3211, E10.3212, E10.3213, E10.3219, E10.3311, E10.3312, E10.3313, E10.3319, E10.3411, E10.3412, E10.3413, E10.3419, E10.3511, E10.3512, E10.3513, E10.3519, E10.3521, E10.3522, E10.3523, E10.3529, E10.3531, E10.3532, E10.3533, E10.3539, E10.3541, E10.3542, E10.3543, E10.3549, E10.3551, E10.3552, E10.3553, E10.3559, E10.37X1, E10.37X2, E10.37X3, E10.37X9, E11.311, E11.3211, E11.3212, E11.3213, E11.3219, E11.3311, E11.3312, E11.3313, E11.3319, E11.3411, E11.3412, E11.3413, E11.3419, E11.3511, E11.3512, E11.3513, E11.3519, E11.3521, E11.3522, E11.3523, E11.3529, E11.3531, E11.3532, E11.3533, E11.3539, E11.3541, E11.3542, E11.3543, E11.3549, E11.3551, E11.3552, E11.3553, E11.3559, E11.37X1, E11.37X2, E11.37X3, E11.37X9, E13.311, E13.3211, E13.3212, E13.3213, E13.3219, E13.3311, E13.3312, E13.3313, E13.3319, E13.3411, E13.3412, E13.3413, E13.3419, E13.3511, E13.3512, E13.3513, E13.3519, E13.3521, E13.3522, E13.3523, E13.3529, E13.3531, E13.3532, E13.3533, E13.3539, E13.3541, E13.3542, E13.3543, E13.3549, E13.3551, E13.3552, E13.3553, E13.3559, E13.37X1, E13.37X2, E13.37X3, E13.37X9

Significant Ocular Condition	Corresponding ICD-10-CM Codes
Diabetic Retinopathy	E08.311, E08.319, E08.3211, E08.3212, E08.3213, E08.3219, E08.3291, E08.3292, E08.3293, E08.3299, E08.3311, E08.3312, E08.3313, E08.3319, E08.3391, E08.3392, E08.3393, E08.3399, E08.3411, E08.3412, E08.3413, E08.3419, E08.3491, E08.3492, E08.3493, E08.3499, E08.3511, E08.3512, E08.3513, E08.3519, E08.3521, E08.3522, E08.3523, E08.3529, E08.3531, E08.3532, E08.3533, E08.3539, E08.3541, E08.3542, E08.3543, E08.3549, E08.3551, E08.3552, E08.3553, E08.3559, E08.3591, E08.3592, E08.3593, E08.3599, E09.311, E09.319, E09.3211, E09.3212, E09.3213, E09.3219, E09.3291, E09.3292, E09.3293, E09.3299, E09.3311, E09.3312, E09.3313, E09.3319, E09.3391, E09.3392, E09.3393, E09.3399, E09.3411, E09.3412, E09.3413, E09.3419, E09.3491, E09.3492, E09.3493, E09.3499, E09.3511, E09.3512, E09.3513, E09.3519, E09.3521, E09.3522, E09.3523, E09.3529, E09.3531, E09.3532, E09.3533, E09.3539, E09.3541, E09.3542, E09.3543, E09.3549, E09.3551, E09.3552, E09.3553, E09.3559, E09.3591, E09.3592, E09.3593, E09.3599, E10.311, E10.319, E10.3211, E10.3212, E10.3213, E10.3219, E10.3291, E10.3292, E10.3293, E10.3299, E10.3311, E10.3312, E10.3313, E10.3319, E10.3391, E10.3392, E10.3393, E10.3399, E10.3411, E10.3412, E10.3413, E10.3419, E10.3491, E10.3492, E10.3493, E10.3499, E10.3511, E10.3512, E10.3513, E10.3519, E10.3521, E10.3522, E10.3523, E10.3529, E10.3531, E10.3532, E10.3533, E10.3539, E10.3541, E10.3542, E10.3543, E10.3549, E10.3551, E10.3552, E10.3553, E10.3559, E10.3591, E10.3592, E10.3593, E10.3599, E11.311, E11.319, E11.3211, E11.3212, E11.3213, E11.3219, E11.3291, E11.3292, E11.3293, E11.3299, E11.3311, E11.3312, E11.3313, E11.3319, E11.3391, E11.3392, E11.3393, E11.3399, E11.3411, E11.3412, E11.3413, E11.3419, E11.3491, E11.3492, E11.3493, E11.3499, E11.3511, E11.3512, E11.3513, E11.3519, E11.3521, E11.3522, E11.3523, E11.3529, E11.3531, E11.3532, E11.3533, E11.3539, E11.3541, E11.3542, E11.3543, E11.3549, E11.3551, E11.3552, E11.3553, E11.3559, E11.3591, E11.3592, E11.3593, E11.3599, E13.311, E13.319, E13.3211, E13.3212, E13.3213, E13.3219, E13.3291, E13.3292, E13.3293, E13.3299, E13.3311, E13.3312, E13.3313, E13.3319, E13.3391, E13.3392, E13.3393, E13.3399, E13.3411, E13.3412, E13.3413, E13.3419, E13.3491, E13.3492, E13.3493, E13.3499, E13.3511, E13.3512, E13.3513, E13.3519, E13.3521, E13.3522, E13.3523, E13.3529, E13.3531, E13.3532, E13.3533, E13.3539, E13.3541, E13.3542, E13.3543, E13.3549, E13.3551, E13.3552, E13.3553, E13.3559, E13.3591, E13.3592, E13.3593, E13.3599
Disorders of Optic Chiasm	H47.41, H47.42, H47.43, H47.49
Disorders of Visual Cortex	H47.611, H47.612, H47.619

Significant Ocular Condition	Corresponding ICD-10-CM Codes
Disseminated Chorioretinitis and Disseminated Retinochoroiditis	A18.53, H30.101, H30.102, H30.103, H30.109, H30.111, H30.112, H30.113, H30.119, H30.121, H30.122, H30.123, H30.129, H30.131, H30.132, H30.133, H30.139, H30.141, H30.142, H30.143, H30.149
Focal Chorioretinitis and Focal Retinochoroiditis	H30.001, H30.002, H30.003, H30.009, H30.011, H30.012, H30.013, H30.019, H30.021, H30.022, H30.023, H30.029, H30.031, H30.032, H30.033, H30.039, H30.041, H30.042, H30.043, H30.049
Glaucoma	H40.10X0, H40.10X1, H40.10X2, H40.10X3, H40.10X4, H40.1110, H40.1111, H40.1112, H40.1113, H40.1114, H40.1120, H40.1121, H40.1122, H40.1123, H40.1124, H40.1130, H40.1131, H40.1132, H40.1133, H40.1134, H40.1190, H40.1191, H40.1192, H40.1193, H40.1194, H40.1210, H40.1211, H40.1212, H40.1213, H40.1214, H40.1220, H40.1221, H40.1222, H40.1223, H40.1224, H40.1230, H40.1231, H40.1232, H40.1233, H40.1234, H40.1290, H40.1291, H40.1292, H40.1293, H40.1294, H40.1310, H40.1311, H40.1312, H40.1313, H40.1314, H40.1320, H40.1321, H40.1322, H40.1323, H40.1324, H40.1330, H40.1331, H40.1332, H40.1333, H40.1334, H40.1390, H40.1391, H40.1392, H40.1393, H40.1394, H40.1410, H40.1411, H40.1412, H40.1413, H40.1414, H40.1420, H40.1421, H40.1422, H40.1423, H40.1424, H40.1430, H40.1431, H40.1432, H40.1433, H40.1434, H40.1490, H40.1491, H40.1492, H40.1493, H40.1494, H40.151, H40.152, H40.153, H40.159, H40.20X0, H40.20X1, H40.20X2, H40.20X3, H40.20X4, H40.211, H40.212, H40.213, H40.219, H40.2210, H40.2211, H40.2212, H40.2213, H40.2214, H40.2220, H40.2221, H40.2222, H40.2223, H40.2224, H40.2230, H40.2231, H40.2232, H40.2233, H40.2234, H40.2290, H40.2291, H40.2292, H40.2293, H40.2294, H40.231, H40.232, H40.233, H40.239, H40.241, H40.242, H40.243, H40.249, H40.30X0, H40.30X1, H40.30X2, H40.30X3, H40.30X4, H40.31X0, H40.31X1, H40.31X2, H40.31X3, H40.31X4, H40.32X0, H40.32X1, H40.32X2, H40.32X3, H40.32X4, H40.33X0, H40.33X1, H40.33X2, H40.33X3, H40.33X4, H40.40X0, H40.40X1, H40.40X2, H40.40X3, H40.40X4, H40.41X0, H40.41X1, H40.41X2, H40.41X3, H40.41X4, H40.42X0, H40.42X1, H40.42X2, H40.42X3, H40.42X4, H40.43X0, H40.43X1, H40.43X2, H40.43X3, H40.43X4, H40.50X0, H40.50X1, H40.50X2, H40.50X3, H40.50X4, H40.51X0, H40.51X1, H40.51X2, H40.51X3, H40.51X4, H40.52X0, H40.52X1, H40.52X2, H40.52X3, H40.52X4, H40.53X0, H40.53X1, H40.53X2, H40.53X3, H40.53X4, H40.60X0, H40.60X1, H40.60X2, H40.60X3, H40.60X4, H40.61X0, H40.61X1, H40.61X2, H40.61X3, H40.61X4, H40.62X0, H40.62X1, H40.62X2, H40.62X3, H40.62X4, H40.63X0, H40.63X1, H40.63X2, H40.63X3, H40.63X4, H40.811, H40.812, H40.813, H40.819, H40.821, H40.822, H40.823, H40.829, H40.831, H40.832, H40.833, H40.839, H40.89, Q15.0

<b>Significant Ocular Condition</b>	<b>Corresponding ICD-10-CM Codes</b>
Glaucoma Associated with Congenital Anomalies, Dystrophies, and Systemic Syndromes	H40.30X0, H40.30X1, H40.30X2, H40.30X3, H40.30X4, H40.31X0, H40.31X1, H40.31X2, H40.31X3, H40.31X4, H40.32X0, H40.32X1, H40.32X2, H40.32X3, H40.32X4, H40.33X0, H40.33X1, H40.33X2, H40.33X3, H40.33X4, H40.40X0, H40.40X1, H40.40X2, H40.40X3, H40.40X4, H40.41X0, H40.41X1, H40.41X2, H40.41X3, H40.41X4, H40.42X0, H40.42X1, H40.42X2, H40.42X3, H40.42X4, H40.43X0, H40.43X1, H40.43X2, H40.43X3, H40.43X4, H40.50X0, H40.50X1, H40.50X2, H40.50X3, H40.50X4, H40.51X0, H40.51X1, H40.51X2, H40.51X3, H40.51X4, H40.52X0, H40.52X1, H40.52X2, H40.52X3, H40.52X4, H40.53X0, H40.53X1, H40.53X2, H40.53X3, H40.53X4, H40.811, H40.812, H40.813, H40.819, H40.821, H40.822, H40.823, H40.829, H40.831, H40.832, H40.833, H40.839, H40.89, H40.9, H42
Hereditary Choroidal Dystrophies	H31.20, H31.21, H31.22, H31.23, H31.29
Hereditary Corneal Dystrophies	H18.50, H18.51, H18.52, H18.53, H18.54, H18.55, H18.59
Hereditary Retinal Dystrophies	H35.50, H35.51, H35.52, H35.53, H35.54, H36
Injury to Optic Nerve and Pathways	S04.011A, S04.012A, S04.019A, S04.02XA, S04.031A, S04.032A, S04.039A, S04.041A, S04.042A, S04.049A
Moderate or Severe Impairment, Better Eye, Profound Impairment Lesser Eye	H54.10, H54.1131, H54.1132, H54.1141, H54.1142, H54.1151, H54.1152, H54.1213, H54.1214, H54.1215, H54.1223, H54.1224, H54.1225
Nystagmus and Other Irregular Eye Movements	H55.01
Open Wound of Eyeball	S05.10XA, S05.11XA, S05.12XA, S05.20XA, S05.21XA, S05.22XA, S05.30XA, S05.31XA, S05.32XA, S05.50XA, S05.51XA, S05.52XA, S05.60XA, S05.61XA, S05.62XA, S05.70XA, S05.71XA, S05.72XA, S05.8X1A, S05.8X2A, S05.8X9A, S05.90XA, S05.91XA, S05.92XA
Optic Atrophy	H47.20, H47.211, H47.212, H47.213, H47.219, H47.22, H47.231, H47.232, H47.233, H47.239, H47.291, H47.292, H47.293, H47.299
Optic Neuritis	H46.00, H46.01, H46.02, H46.03, H46.10, H46.11, H46.12, H46.13, H46.2, H46.3, H46.8, H46.9
Other and Unspecified Forms of Chorioretinitis and Retinochoroiditis	H30.20, H30.21, H30.22, H30.23, H30.811, H30.812, H30.813, H30.819, H30.891, H30.892, H30.893, H30.899, H30.90, H30.91, H30.92, H30.93
Other Background Retinopathy and Retinal Vascular Changes	H35.021, H35.022, H35.023, H35.029, H35.051, H35.052, H35.053, H35.059, H35.061, H35.062, H35.063, H35.069

<b>Significant Ocular Condition</b>	<b>Corresponding ICD-10-CM Codes</b>
Other Corneal Deformities	H18.70, H18.711, H18.712, H18.713, H18.719, H18.721, H18.722, H18.723, H18.729, H18.731, H18.732, H18.733, H18.739, H18.791, H18.792, H18.793, H18.799
Other Disorders of Optic Nerve	H47.011, H47.012, H47.013, H47.019
Other Disorders of Sclera	H15.831, H15.832, H15.833, H15.839, H15.841, H15.842, H15.843, H15.849
Other Endophthalmitis	H16.241, H16.242, H16.243, H16.249, H21.331, H21.332, H21.333, H21.339, H33.121, H33.122, H33.123, H33.129, H44.111, H44.112, H44.113, H44.119, H44.121, H44.122, H44.123, H44.129, H44.131, H44.132, H44.133, H44.139, H44.19
Other Proliferative Retinopathy	H35.101, H35.102, H35.103, H35.109, H35.111, H35.112, H35.113, H35.119, H35.121, H35.122, H35.123, H35.129, H35.131, H35.132, H35.133, H35.139, H35.141, H35.142, H35.143, H35.149, H35.151, H35.152, H35.153, H35.159, H35.161, H35.162, H35.163, H35.169, H35.171, H35.172, H35.173, H35.179
Other Retinal Disorders	H35.60, H35.61, H35.62, H35.63, H35.81, H35.82, H35.89
Pathologic Myopia	H44.20, H44.2A1, H44.2A2, H44.2A3, H44.2A9, H44.2B1, H44.2B2, H44.2B3, H44.2B9, H44.2C1, H44.2C2, H44.2C3, H44.2C9, H44.2D1, H44.2D2, H44.2D3, H44.2D9, H44.2E1, H44.2E2, H44.21, H44.22, H44.23, H44.30
Prior Penetrating Keratoplasty	H18.601, H18.602, H18.603, H18.609, H18.611, H18.612, H18.613, H18.619, H18.621, H18.622, H18.623, H18.629
Profound Impairment, Both Eyes	H54.0X33, H54.0X34, H54.0X35, H54.0X43, H54.0X44, H54.0X45, H54.0X53, H54.0X54, H54.0X55, H54.10
Purulent Endophthalmitis	H44.001, H44.002, H44.003, H44.009, H44.011, H44.012, H44.013, H44.019, H44.021, H44.022, H44.023, H44.029
Retinal Detachment with Retinal Defect	H33.001, H33.002, H33.003, H33.009, H33.011, H33.012, H33.013, H33.019, H33.021, H33.022, H33.023, H33.029, H33.031, H33.032, H33.033, H33.039, H33.041, H33.042, H33.043, H33.049, H33.051, H33.052, H33.053, H33.059, H33.8
Retinal Vascular Occlusion	H34.10, H34.11, H34.12, H34.13, H34.231, H34.232, H34.233, H34.239, H34.8110, H34.8111, H34.8112, H34.8120, H34.8121, H34.8122, H34.8130, H34.8131, H34.8132, H34.8190, H34.8191, H34.8192, H34.8310, H34.8311, H34.8312, H34.8320, H34.8321, H34.8322, H34.8330, H34.8331, H34.8332, H34.8390, H34.8391, H34.8392
Scleritis and Episcleritis	A18.51, H15.021, H15.022, H15.023, H15.029, H15.031, H15.032, H15.033, H15.039, H15.041, H15.042, H15.043, H15.049, H15.051, H15.052, H15.053, H15.059, H15.091, H15.092, H15.093, H15.099
Separation of Retinal Layers	H35.711, H35.712, H35.713, H35.719, H35.721, H35.722, H35.723, H35.729, H35.731, H35.732, H35.733, H35.739
Uveitis	H44.111, H44.112, H44.113, H44.119, H44.131, H44.132, H44.133, H44.139
Visual Field Defects	H53.411, H53.412, H53.413, H53.419

**NUMERATOR:**

Patients who had best-corrected visual acuity of 20/40 or better (distance or near) achieved within 90 days following cataract surgery

**Numerator Options:**

***Performance Met:***

Best-corrected visual acuity of 20/40 or better (distance or near) achieved within the 90 days following cataract surgery **(4175F)**

**OR**

***Performance Not Met:***

Best-corrected visual acuity of 20/40 or better (distance or near) not achieved within the 90 days following cataract surgery, reason not otherwise specified **(4175F with 8P)**

**RATIONALE:**

1. Scientific basis for measuring visual acuity outcomes after cataract surgery

The only reason to perform cataract surgery (other than for a limited set of medical indications) is to improve a patient's vision and associated functioning. The use of a 20/40 visual acuity threshold is based on several considerations. First, it is the level for unrestricted operation of a motor vehicle in the US. Second, it has been consistently used by the FDA in its assessment for approval of intraocular lens (IOL) and other vision devices. Third, it is the literature standard to denote success in cataract surgery. Fourth, work by West et al in the Salisbury Eye Study suggests that 20/40 is a useful threshold for 50th percentile functioning for several vision-related tasks.

Most patients achieve excellent visual acuity after cataract surgery (20/40 or better). This outcome is achieved consistently through careful attention through the accurate measurement of axial length and corneal power and the appropriate selection of an IOL power calculation formula. As such, it reflects the care and diligence with which the surgery is assessed, planned and executed. Failure to achieve this after surgery in eyes without comorbid ocular conditions that would impact the success of the surgery would reflect care that should be assessed for opportunities for improvement.

The exclusion of patients with other ocular and systemic conditions known to increase the risk of an adverse outcome reflects the findings of the two published prediction rule papers for cataract surgery outcomes, by Mangione et. al. and Steinberg et. al. In both papers, the presence of comorbid glaucoma and macular degeneration negatively impacted the likelihood of successful outcomes of surgery. Further, as noted in the prior indicator, exclusion of eyes with ocular conditions that could impact the success of the surgery would NOT eliminate the large majority of eyes undergoing surgery while also minimizing the potential adverse selection that might otherwise occur relative to those patients with the most complex situations who might benefit the most from having surgery to maximize their remaining vision.

2. Evidence of a gap in care

Cataract surgery successfully restores vision in the majority of people who have the procedure.

The ASCRS National Cataract Database reported that at 3 months postoperatively, 85.5% of all patients had a 20/40 or better best-corrected visual acuity, 57.2% of patients had 20/25 or better postoperative best-corrected visual acuity, and 74.6% of patients were within  $\pm 1.0$  D of target spherical equivalent. Based on 5,788 responses, the mean visual function index score at 3 months postoperatively was 70.3% compared with 55.0% preoperatively (AAO, 2011).



Additionally, data from a UK multi-center Cataract National Dataset found a postoperative visual acuity of 6/12 (20/40) or better was achieved for 94.7% of eyes with no co-pathologies and in 79.9% of eyes with one or more co-pathologies (Jaycock, 2009).

A rate of 85.5-94.7% of patients achieving a 20/40 or better visual acuity in the context of approximately 3 million cataract surgeries in the US annually would mean that between 160,000 to 435,000 individuals would not achieve a 20/40 or better visual acuity which suggests an opportunity for improvement.

**CLINICAL RECOMMENDATION STATEMENTS:**

This is an outcome measure. As such, there is no statement in the guideline specific to this measurement topic.

**COPYRIGHT:**

The Measures are not clinical guidelines, do not establish a standard of medical care, and have not been tested for all potential applications.

The Measures, while copyrighted, can be reproduced and distributed, without modification, for noncommercial purposes, eg, use by health care providers in connection with their practices. Commercial use is defined as the sale, license, or distribution of the Measures for commercial gain, or incorporation of the Measures into a product or service that is sold, licensed or distributed for commercial gain.

Commercial uses of the Measures require a license agreement between the user and the PCPI® Foundation (PCPI®) or the American Medical Association (AMA). Neither the American Medical Association (AMA), nor the AMA-convened Physician Consortium for Performance Improvement® (AMA-PCPI), nor PCPI, nor their members shall be responsible for any use of the Measures.

**The National Committee for Quality Assurance's significant past efforts and contributions to the development and updating of the Measures is acknowledged.**

AMA and PCPI encourage use of the Measures by other health care professionals, where appropriate.

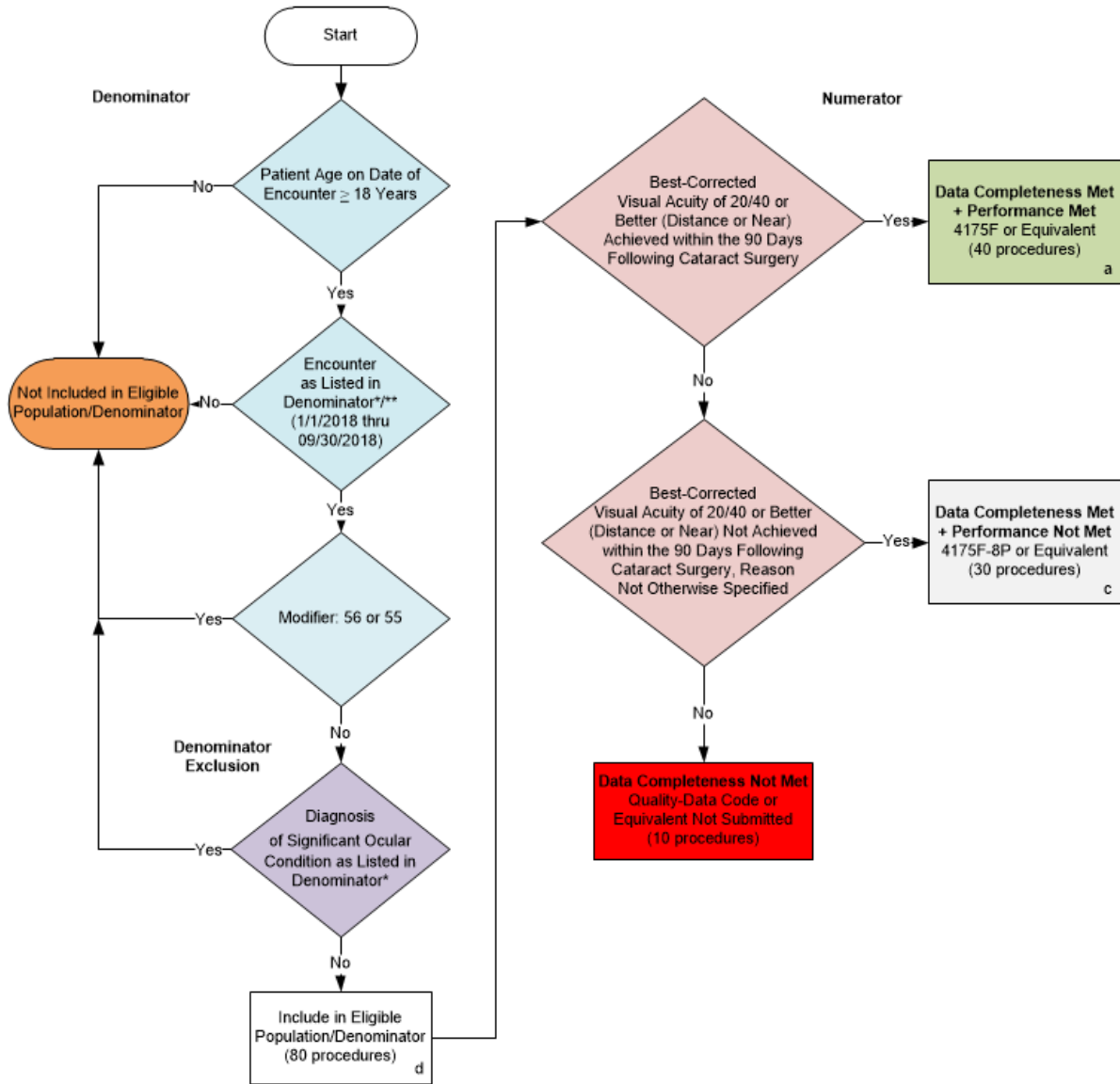
**THE MEASURES AND SPECIFICATIONS ARE PROVIDED "AS IS" WITHOUT WARRANTY OF ANY KIND.**

© 2017 PCPI® Foundation and American Medical Association. All Rights Reserved.

Limited proprietary coding is contained in the Measure specifications for convenience. Users of the proprietary code sets should obtain all necessary licenses from the owners of these code sets. The AMA, PCPI, and its members and former members of the AMA-PCPI disclaim all liability for use or accuracy of any Current Procedural Terminology (CPT®) or other coding contained in the specifications.

CPT® contained in the Measure specifications is copyright 2004-2017 American Medical Association. LOINC® is copyright 2004-2017 Regenstrief Institute, Inc. This material contains SNOMED CLINICAL TERMS (SNOMED CT®) copyright 2004-2017 International Health Terminology Standards Development Organisation. ICD-10 is copyright 2017 World Health Organization. All Rights Reserved.

**2018 Registry Flow for Quality ID #191 NQF #0565:  
Cataracts: 20/40 or Better Visual Acuity within 90 Days Following Cataract Surgery**



**SAMPLE CALCULATIONS:**

**Data Completeness=**  

$$\frac{\text{Performance Met (a=40 procedures)} + \text{Performance Not Met (c=30 procedures)}}{\text{Eligible Population / Denominator (d=80 procedures)}} = \frac{70 \text{ procedures}}{80 \text{ procedures}} = 87.50\%$$

**Performance Rate=**  

$$\frac{\text{Performance Met (a=40 procedures)}}{\text{Data Completeness Numerator (70 procedures)}} = \frac{40 \text{ procedures}}{70 \text{ procedures}} = 57.14\%$$

\*See the posted Measure Specification for specific coding and instructions to submit this measure.  
 \*\*Include only procedures performed between 1/1/2018 and 9/30/2018 to account for the 90 day period for the numerator action to be assessed after the procedure was performed.

NOTE: Submission Frequency: Procedure

CPT only copyright 2017 American Medical Association. All rights reserved. The measure diagrams were developed by CMS as a supplemental resource to be used in conjunction with the measure specifications. They should not be used alone or as a substitution for the measure specification.

v2

**2018 Registry Flow for Quality ID #191 NQF #0565:  
Cataracts: 20/40 or Better Visual Acuity within 90 Days Following Cataract Surgery**

Please refer to the specific section of the specification to identify the denominator and numerator information for use in submitting this Individual Specification. This flow is for registry data submission.

1. Start with Denominator
2. Check Patient Age:
  - a. If the Age is greater than or equal to 18 years of age on Date of Encounter equals No during the measurement period, do not include in Eligible Patient Population. Stop Processing.
  - b. If the Age is greater than or equal to 18 years of age on Date of Encounter equals Yes during the measurement period, proceed to check Encounter Performed.
3. Check Encounter Performed:
  - a. If Encounter as Listed in the Denominator equals No, do not include in Eligible Patient Population. Stop Processing.
  - b. If Encounter as Listed in the Denominator equals Yes, proceed to check Modifier: 56 or 55.
4. Check Modifier: 56 or 55
  - a. If Modifier: 56 or 55 equals Yes, do not include in Eligible Patient Population. Stop Processing.
  - b. If Modifier: 56 or 55 equals No, proceed to check Patient Diagnosis.
5. Check Patient Diagnosis:
  - a. If Diagnosis of Significant Ocular Condition as Listed in the Denominator equals No, include in the Eligible Population.
  - b. If Diagnosis of Significant Ocular Condition as Listed in the Denominator equals Yes, do not include in Eligible Patient Population. Stop Processing.
6. Denominator Population:
  - a. Denominator Population is all Eligible Patients in the Denominator. The Denominator is represented as Denominator in the Sample Calculation listed at the end of this document. Letter d equals 80 procedures in the Sample Calculation.
7. Start Numerator
8. Check Best-Corrected Visual Acuity of 20/40 or Better (Distance or Near) Achieved within the 90 Days Following Cataract Surgery:
  - a. If Best-Corrected Visual Acuity of 20/40 or Better (Distance or Near) Achieved within the 90 Days Following Cataract Surgery equals Yes, include in Data Completeness Met and Performance Met.
  - b. Data Completeness Met and Performance Met letter is represented in the Data Completeness and Performance Rate in the Sample Calculation listed at the end of this document. Letter a equals 40 procedures in the Sample Calculation.

- c. If Best-Corrected Visual Acuity of 20/40 or Better (Distance or Near) Achieved within the 90 Days Following Cataract Surgery equals No, proceed to Best-Corrected Visual Acuity of 20/40 or Better (Distance or Near) Not Achieved within the 90 Days Following Cataract Surgery, Reason Not Otherwise Specified.
9. Check Best-Corrected Visual Acuity of 20/40 or Better (Distance or Near) Not Achieved within the 90 Days Following Cataract Surgery, Reason Not Otherwise Specified:
- a. If Best-Corrected Visual Acuity of 20/40 or Better (Distance or Near) Not Achieved within the 90 Days Following Cataract Surgery, Reason Not Otherwise Specified equals Yes, include in Data Completeness Met and Performance Not Met.
  - b. Data Completeness Met and Performance Not Met letter is represented in the Data Completeness in the Sample Calculation listed at the end of this document. Letter c equals 30 procedures in the Sample Calculation.
  - c. If Best-Corrected Visual Acuity of 20/40 or Better (Distance or Near) Not Achieved within the 90 Days Following Cataract Surgery, Reason Not Otherwise Specified equals No, proceed to Data Completeness Not Met.
10. Check Data Completeness Not Met:
- a. If Data Completeness Not Met equals No, Quality Data Code or equivalent not submitted. 10 procedures have been subtracted from the Data Completeness Numerator in the Sample Calculation.

**SAMPLE CALCULATIONS:**

**Data Completeness=**

$$\frac{\text{Performance Met (a=40 procedures)} + \text{Performance Not Met (c=30 procedures)}}{\text{Eligible Population / Denominator (d=80 procedures)}} = \frac{70 \text{ procedures}}{80 \text{ procedures}} = 87.50\%$$

**Performance Rate=**

$$\frac{\text{Performance Met (a=40 procedures)}}{\text{Data Completeness Numerator (70 procedures)}} = \frac{40 \text{ procedures}}{70 \text{ procedures}} = 57.14\%$$