

Quality ID #327: Pediatric Kidney Disease: Adequacy of Volume Management – National Quality Strategy
Domain: Effective Clinical Care

2018 OPTIONS FOR INDIVIDUAL MEASURES:
REGISTRY ONLY

MEASURE TYPE:
Process

DESCRIPTION:
Percentage of calendar months within a 12-month period during which patients aged 17 years and younger with a diagnosis of End Stage Renal Disease (ESRD) undergoing maintenance hemodialysis in an outpatient dialysis facility have an assessment of the adequacy of volume management from a nephrologist

INSTRUCTIONS:
This measure is to be submitted each calendar month patients are seen with a diagnosis of ESRD (who are undergoing maintenance hemodialysis in an outpatient dialysis facility) during the performance period. The most recent quality code submitted will be used for performance calculation. It is anticipated that eligible clinicians providing care for patients with ESRD will submit this measure.

Measure Submission:
The listed denominator criteria is used to identify the intended patient population. The numerator options included in this specification are used to submit the quality actions allowed by the measure. The quality-data codes listed do not need to be submitted for registry submissions; however, these codes may be submitted for those registries that utilize claims data.

DENOMINATOR:
All calendar months during which patients aged 17 years and younger with a diagnosis of ESRD are undergoing maintenance hemodialysis in an outpatient dialysis facility

Denominator Criteria (Eligible Cases):

Patients aged ≤ 17 years on date of encounter

AND

Diagnosis for ESRD (ICD-10-CM): N18.6

AND

Patient encounter during the performance period (CPT): 90951, 90952, 90953, 90954, 90955, 90956, 90957, 90958, 90959, 90963, 90964, 90965, 90967, 90968, 90969

WITHOUT

Telehealth Modifier: GQ, GT, 95, POS 02

AND

Patient receiving maintenance hemodialysis in an outpatient dialysis facility: G8956

NUMERATOR:
Calendar months during which patients have an assessment of the adequacy of volume management from a nephrologist

Definition:

Adequacy of Volume Management – Adequacy of volume management for a patient on dialysis is determined by assessing whether or not the patient achieved a target end dialysis weight after receiving dialysis, by a comparison of the patient-specific target end dialysis weight and the actual post dialysis weight.

Numerator Options:

Performance Met:

Most recent assessment of adequacy of volume management documented (**G8955**)

OR

Performance Not Met:

Assessment of adequacy of volume management not documented, Reason not given (**G8958**)

RATIONALE:

Management of hypertension in dialysis patients includes the management of the fluid status. Poor extracellular volume control may exacerbate hypertension and so it is important to optimize ultrafiltration, volume status and dry weight to control blood pressure in an effort to improve patient outcomes. (KDOQI, 2006)

CLINICAL RECOMMENDATION STATEMENTS:

The following evidence statements are quoted verbatim from the referenced clinical guidelines. Only selected portions of the clinical guidelines are quoted here; for more details, please refer to the full guideline.

The following parameters of nutritional status and growth should be considered in combination for evaluation in children with CKD stages 2 to 5 and 5D. (B)

- 1) Dietary intake (3-day diet record or three 24-hour dietary recalls)
- 2) Length- or height-for-age percentile or standard deviation score (SDS)
- 3) Length or height velocity-for-age percentile or SDS
- 4) Estimated dry weight and weight-for-age percentile or SDS
- 5) BMI-for-height-age percentile or SDS
- 6) Head circumference-for-age percentile or SDS (< 3 years old only)
- 7) Normalized protein catabolic rate (nPCR) in hemodialyzed adolescents with CKD stage 5D. (KDOQI, 2009)

COPYRIGHT:

The Measures are not clinical guidelines, do not establish a standard of medical care, and have not been tested for all potential applications.

The Measures, while copyrighted, can be reproduced and distributed, without modification, for noncommercial purposes, e.g., use by health care providers in connection with their practices. Commercial use is defined as the sale, license, or distribution of the Measures for commercial gain, or incorporation of the Measures into a product or service that is sold, licensed or distributed for commercial gain.

Commercial uses of the Measures require a license agreement between the user and the American Medical Association (AMA), [on behalf of the Physician Consortium for Performance Improvement® (PCPI®)] or Renal Physicians Association (RPA). Neither the AMA, RPA, PCPI, nor its members shall be responsible for any use of the Measures.

The AMA's and PCPI's significant past efforts and contributions to the development and updating of the Measures is acknowledged. RPA is solely responsible for the review and enhancement ("Maintenance") of the Measures as of July 11, 2014.

RPA encourages use of the Measures by other health care professionals, where appropriate.

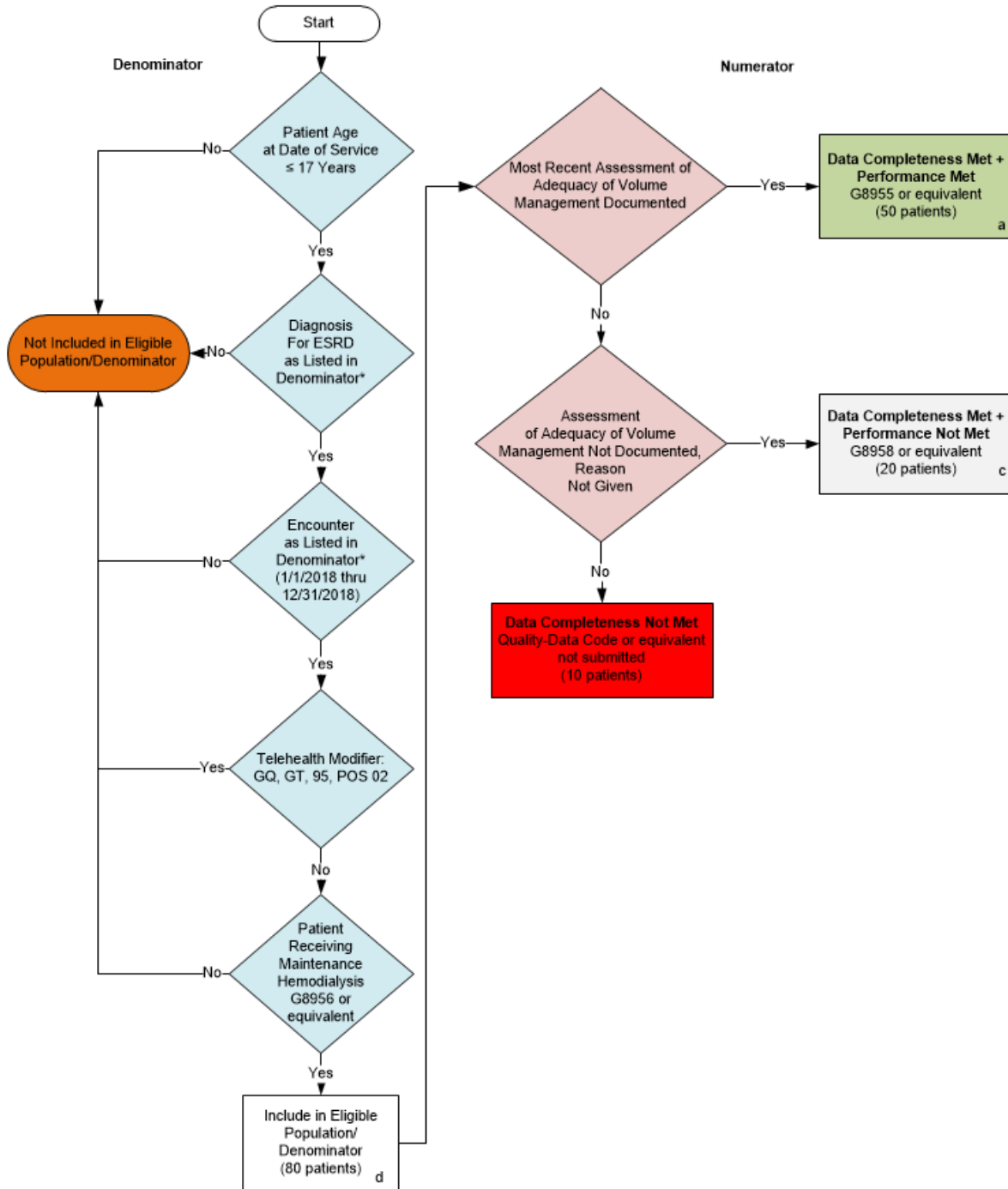
THE MEASURES AND SPECIFICATIONS ARE PROVIDED "AS IS" WITHOUT WARRANTY OF ANY KIND.

© 2015 American Medical Association and Renal Physicians Association. All Rights Reserved. Applicable FARS/DFARS Restrictions Apply to Government Use.

Limited proprietary coding is contained in the Measure specifications for convenience. Users of the proprietary code sets should obtain all necessary licenses from the owners of these code sets. The AMA, RPA, the PCPI and its members disclaim all liability for use or accuracy of any Current Procedural Terminology (CPT®) or other coding contained in the specifications.

CPT® contained in the Measures specifications is copyright 2004-2017 American Medical Association.

2018 Registry Flow for Quality ID #327: Pediatric Kidney Disease: Adequacy of Volume Management



*See the posted Measure Specification for specific coding and instructions to submit this measure.
NOTE: Submission Frequency: Patient-periodic

CPT only copyright 2017 American Medical Association. All rights reserved. The measure diagrams were developed by CMS as a supplemental resource to be used in conjunction with the measure specifications. They should not be used alone or as a substitution for the measure specification.

v2

2018 Registry Flow for Quality ID #327: Pediatric Kidney Disease: Adequacy of Volume Management

SAMPLE CALCULATIONS:

Data Completeness=

$$\frac{\text{Performance Met (a=50 patients)} + \text{Performance Not Met (c=20 patients)}}{\text{Eligible Population / Denominator (d=80 patients)}} = \frac{70 \text{ patients}}{80 \text{ patients}} = 87.50\%$$

Performance Rate=

$$\frac{\text{Performance Met (a=50 patients)}}{\text{Data Completeness Numerator (70 patients)}} = \frac{50 \text{ patients}}{70 \text{ patients}} = 71.43\%$$

*See the posted Measure Specification for specific coding and instructions to submit this measure.

NOTE: Submission Frequency: Patient-periodic

CPT only copyright 2017 American Medical Association. All rights reserved.

v2

2018 Registry Flow For Quality ID
#327: Pediatric Kidney Disease: Adequacy of Volume Management

Please refer to the specific section of the specification to identify the denominator and numerator information for use in submitting this Individual Specification. This flow is for registry data submission.

1. Start with Denominator
2. Check Patient Age:
 - a. If the Age is less than or equal to 17 years of age at Date of Services and equals No during the measurement period, do not include in Eligible Patient Population. Stop Processing.
 - b. If the Age is less than or equal to 17 years of age at Date of Services and equals Yes during the measurement period, proceed to check Patient Diagnosis.
3. Check Patient Diagnosis:
 - a. If Diagnosis of ESRD as Listed in the Denominator equals No, do not include in Eligible Patient Population. Stop Processing.
 - b. If Diagnosis of ESRD as Listed in the Denominator equals Yes, proceed to check Encounter Performed.
4. Check Encounter Performed:
 - a. If Encounter as Listed in Denominator equals No, do not include in Eligible Patient Population. Stop Processing.
 - b. If Encounter as Listed in Denominator equals Yes, proceed to check Telehealth Modifier.
5. Check Telehealth Modifier:
 - a. If Telehealth Modifier equals Yes, do not include in Eligible Patient Population. Stop Processing.
 - b. If Telehealth Modifier equals No, proceed to check Patient Receiving Maintenance Hemodialysis.
6. Check Patient Receiving Maintenance Hemodialysis:
 - a. If Patient Receiving Maintenance Hemodialysis equals No, do not include in Eligible Patient Population. Stop Processing.
 - b. If check Patient Receiving Maintenance Hemodialysis equals Yes, include in the Eligible Population.
7. Denominator Population:
 - a. Denominator Population is all Eligible Patients in the Denominator. Denominator is represented as Denominator in the Sample Calculation listed at the end of this document. Letter d equals 80 patients in the Sample Calculation.
8. Start Numerator
9. Check Most Recent Assessment of Adequacy of Volume Management Documented:
 - a. If Most Recent Assessment of Adequacy of Volume Management Documented equals Yes, include in Data Completeness Met and Performance Met.
 - b. Data Completeness Met and Performance Met letter is represented in the Data Completeness and Performance Rate in the Sample Calculation listed at the end of this document. Letter a equals 50 patients in the Sample Calculation.

- c. If Most Recent Assessment of Adequacy of Volume Management Documented equals No, proceed to check Assessment of Adequacy of Volume Management Not Documented, Reason Not Given.

10. Check Assessment of Adequacy of Volume Management Not Documented, Reason Not Given:

- a. If Assessment of Adequacy of Volume Management Not Documented, Reason Not Given equals Yes, include in the Data Completeness Met and Performance Not Met.
- b. Data Completeness Met and Performance Not Met letter is represented in the Data Completeness in the Sample Calculation listed at the end of this document. Letter c equals 20 patients in the Sample Calculation.
- c. If Assessment of Adequacy of Volume Management Not Documented, Reason Not Given equals No, proceed to Data Completeness Not Met.

11. Check Data Completeness Not Met:

- a. If Data Completeness Not Met, the Quality Data Code or equivalent was not submitted. 10 patients have been subtracted from the Data Completeness Numerator in Sample Calculation.

SAMPLE CALCULATIONS:

Data Completeness=

$$\frac{\text{Performance Met (a=50 patients) + Performance Not Met (c=20 patients)}}{\text{Eligible Population / Denominator (d=80 patients)}} = \frac{70 \text{ patients}}{80 \text{ patients}} = 87.50\%$$

Performance Rate=

$$\frac{\text{Performance Met (a =50 patients)}}{\text{Data Completeness Numerator (70 patients)}} = \frac{50 \text{ patients}}{70 \text{ patients}} = 71.43\%$$