

Quality ID #146 (NQF 0508): Radiology: Inappropriate Use of “Probably Benign” Assessment Category in Screening Mammograms

- National Quality Strategy Domain: Efficiency and Cost Reduction
- Meaningful Measure Area: Transfer of Health Information and Interoperability

2019 COLLECTION TYPE:

MIPS CLINICAL QUALITY MEASURES (CQMS)

MEASURE TYPE:

Process – High Priority

DESCRIPTION:

Percentage of final reports for screening mammograms that are classified as “probably benign”

INSTRUCTIONS:

This measure is to be submitted **each time** a screening mammogram is performed during the performance period. It is anticipated that Merit-based Incentive Payment System (MIPS) eligible clinicians who provide the professional component of diagnostic imaging studies for screening mammograms will submit this measure.

Measure Submission Type:

Measure data may be submitted by individual MIPS eligible clinicians, groups, or third party intermediaries. The listed denominator criteria are used to identify the intended patient population. The numerator options included in this specification are used to submit the quality actions as allowed by the measure. The quality-data codes listed do not need to be submitted by MIPS eligible clinicians, groups, or third party intermediaries that utilize this modality for submissions; however, these codes may be submitted for those third party intermediaries that utilize Medicare Part B claims data. For more information regarding Application Programming Interface (API), please refer to the Quality Payment Program (QPP) website.

DENOMINATOR:

All final reports for screening mammograms

Denominator Criteria (Eligible Cases):

Diagnosis for screening mammogram (ICD-10-CM): Z12.31

AND

Patient procedure during the performance period (CPT or HCPCS): 77067

NUMERATOR:

Final reports classified as “probably benign”

Definition:

“Probably Benign” Classification – Mammography Quality Standards Act (MQSA) assessment category of “probably benign”; Breast Imaging-Reporting and Data System (BI-RADS®) category 3; or Food and Drug Administration (FDA)-approved equivalent assessment category.

Numerator Instructions:

INVERSE MEASURE - A lower calculated performance rate for this measure indicates better clinical care or control. The “Performance Not Met” numerator option for this measure is the representation of the better clinical quality or control. Submitting that numerator option will produce a performance rate that trends closer to 0%, as quality increases. For inverse measures, a rate of 100% means all of the denominator eligible patients did not receive the appropriate care or were not in proper control.

A lower percentage, with a definitional target approaching 0%, indicates appropriate assessment of screening mammograms.

The mammogram assessment category (corresponding CPT Category II 33xxF code for assessment categories”) to be submitted is the final assessment for the screening mammographic study. If a diagnostic mammographic study follows the screening exam, the assessment category for the screening exam should be submitted with the corresponding CPT Category II code, i.e. 3340F for Mammogram assessment category of “incomplete: need additional imaging evaluation,” documented. Of note, the performance tags indicating ‘Performance Met’ and ‘Performance Not Met’ are included to highlight what is being measured and submitted and not to encourage the use and documentation of “probably benign”.

Numerator Options:

<u>OR</u>	<i>Performance Met:</i>	Mammogram assessment category of “probably benign,” documented (3343F)
	<i>Performance Not Met:</i>	Mammogram assessment category of “incomplete: need additional imaging evaluation,” documented (3340F)
<u>OR</u>	<i>Performance Not Met:</i>	Mammogram assessment category of “negative,” Documented (3341F)
<u>OR</u>	<i>Performance Not Met:</i>	Mammogram assessment category of “benign,” Documented (3342F)
<u>OR</u>	<i>Performance Not Met:</i>	Mammogram assessment category of “suspicious,” Documented (3344F)
<u>OR</u>	<i>Performance Not Met:</i>	Mammogram assessment category “highly suggestive of malignancy,” documented (3345F)
<u>OR</u>	<i>Performance Not Met:</i>	Mammogram assessment category of “known biopsy proven malignancy,” documented (3350F)

RATIONALE:

The “probably benign” assessment category is reserved for findings that have a high probability ($\geq 98\%$) chance of being benign and should not be used as a category for indeterminate findings. Inappropriate designation of findings as “probably benign” can result in unnecessary follow-up of lesions that could have been quickly classified or delayed diagnosis and treatment of cancerous lesions. Published guidance documents emphasize the need to conduct a complete diagnostic imaging evaluation before making a probably benign (Category 3) assessment; making it inadvisable to use the probably benign categorization when interpreting a screening mammogram. Immediate completion of a diagnostic imaging evaluation for abnormal screening mammograms eliminates potential anxiety that women would endure with the short interval follow-up that is recommended for “probably benign” findings.

CLINICAL RECOMMENDATION STATEMENTS:

A category 3, 4, or 5 assessment is not recommended for a screening mammogram, even though in some instances a highly suspicious abnormality may be identified that will warrant a recommendation for biopsy. Rather, all patients with screening abnormalities should be given a BI-RADS® category 0 assessment and recalled for further diagnostic studies. (ACR, 2013)

All the previously cited studies emphasize the need to conduct a complete diagnostic imaging evaluation before making a probably benign (category 3) assessment; hence it is recommended not to render such an assessment in interpreting a screening mammography examination. The practice of rendering category 3 assessments directly from screening examination also has been shown to result in adverse outcomes: 1) unnecessary follow-up of

many lesions that could have been promptly assessed as benign, and 2) delayed diagnosis of a small number of cancers that otherwise may have been smaller in size and less likely to be advanced in stage (ACR, 2013)

The use of assessment category 3, probably benign, has been clarified in the lexicon of the 2013 edition. It is emphasized that this is not an indeterminate category used simply when the radiologist is unsure whether to render a benign (BI-RADS® category 2) or suspicious (BI-RADS® category 4) assessment, but one that is reserved for specific imaging findings known to have a greater than essentially 0% but $\leq 2\%$ likelihood of representing malignancy. (ACR, 2013)

For mammography, there is robust literature describing three findings (noncalcified circumscribed solid mass, focal asymmetry and solitary group of punctate calcifications) that have likelihoods of malignancy in the defined ($\leq 2\%$) probably benign range, for which short interval (6-month) follow-up mammography and then periodic mammographic surveillance represents appropriate management. Use of assessment category 3 for mammographic findings other than these three should be considered only if the radiologist has personal experience to justify a watchful-waiting approach, preferably involving observation of a sufficient number of cases of an additional mammographic finding to suggest a likelihood of malignancy within the defined ($\leq 2\%$) probably-benign range. Two large-scale studies performed in the United States have validated that in the usual-care setting, category 3 assessments indeed are associated with a likelihood of malignancy of $<2\%$. (ACR 2013)

COPYRIGHT:

The Measures are not clinical guidelines, do not establish a standard of medical care, and have not been tested for all potential applications.

The Measures, while copyrighted, can be reproduced and distributed, without modification, for noncommercial purposes, e.g., use by health care providers in connection with their practices. Commercial use is defined as the sale, license, or distribution of the Measures for commercial gain, or incorporation of the Measures into a product or service that is sold, licensed or distributed for commercial gain.

Commercial uses of the Measures require a license agreement between the user and the American Medical Association (AMA), [on behalf of the Physician Consortium for Performance Improvement® (PCPI®)] or American College of Radiology (ACR). Neither the AMA, ACR, PCPI, nor its members shall be responsible for any use of the Measures.

The AMA's, PCPI's and National Committee for Quality Assurance's significant past efforts and contributions to the development and updating of the Measures is acknowledged. ACR is solely responsible for the review and enhancement ("Maintenance") of the Measures as of December 31, 2014.

ACR encourages use of the Measures by other health care professionals, where appropriate.

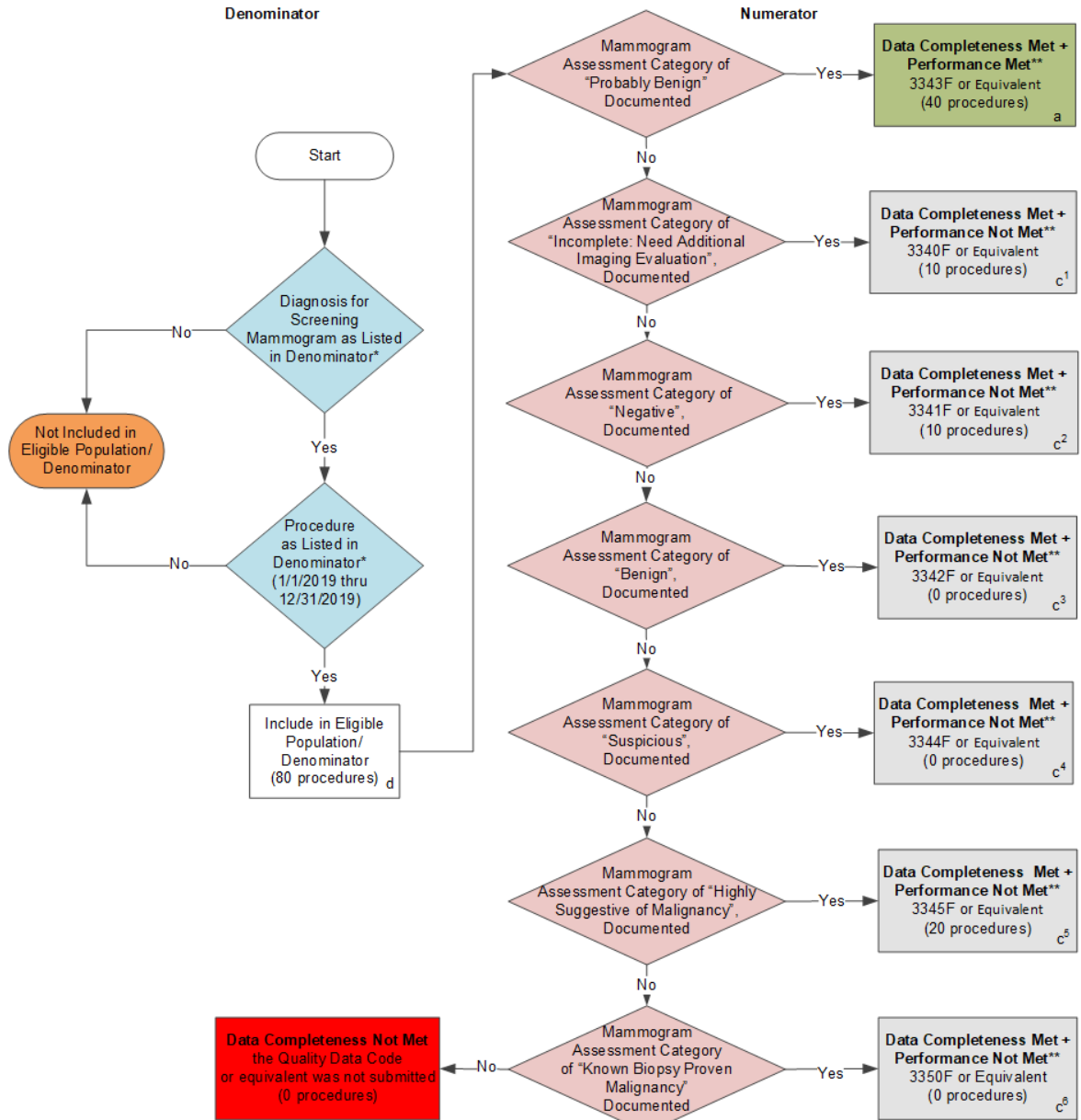
THE MEASURES AND SPECIFICATIONS ARE PROVIDED "AS IS" WITHOUT WARRANTY OF ANY KIND.

© 2015 American Medical Association and American College of Radiology. All Rights Reserved. Applicable FARS/DFARS Restrictions Apply to Government Use.

Limited proprietary coding is contained in the Measure specifications for convenience. Users of the proprietary code sets should obtain all necessary licenses from the owners of these code sets. The AMA, ACR, the PCPI and its members disclaim all liability for use or accuracy of any Current Procedural Terminology (CPT®) or other coding contained in the specifications.

CPT® contained in the Measures specifications is copyright 2004-2017 American Medical Association. LOINC® copyright 2004-2018 Regenstrief Institute, Inc. SNOMED CLINICAL TERMS (SNOMED CT®) copyright 2004-2018 College of American Pathologists. All Rights Reserved.

**2019 Clinical Quality Measure Flow for Quality Data #146 NQF #0508:
Radiology: Inappropriate Use of "Probably Benign" Assessment Category in Screening Mammograms**



SAMPLE CALCULATIONS:

Data Completeness=

$$\frac{\text{Performance Met (a=40 procedures)} + \text{Performance Not Met (c}^1\text{+c}^2\text{+c}^3\text{+c}^4\text{+c}^5\text{+c}^6\text{ = 40 procedures)}}{\text{Eligible Population / Denominator (d=80 procedures)}} = \frac{80 \text{ procedures}}{80 \text{ procedures}} = 100.00\%$$

Performance Rate=**

$$\frac{\text{Performance Met (a=40 procedures)}}{\text{Data Completeness Numerator (80 procedures)}} = \frac{40 \text{ procedures}}{80 \text{ procedures}} = 50.00\%$$

*See the posted Measure Specifications for specific coding and instructions to submit this measure.
 **A lower calculated performance rate for this measure indicates better clinical care or control.
 NOTE: Submission Frequency – Procedure

CPT only copyright 2018 American Medical Association. All rights reserved.
 The measure diagrams were developed by CMS as a supplemental resource to be used in conjunction with the measure specifications. They should not be used alone or as a substitution for the measure specification.

2019 Clinical Quality Measure Flow Narrative for Quality ID #146 NQF #0508:
Radiology: Inappropriate Use of “Probably Benign” Assessment Category in Screening Mammograms

Please refer to the specific section of the specification to identify the denominator and numerator information for use in submitting this Individual Specification.

1. Start with Denominator
2. Check Patient Diagnosis:
 - a. If Diagnosis for Screening Mammogram as Listed in the Denominator equals No, do not include in Eligible Population. Stop Processing.
 - b. If Diagnosis for Screening Mammogram as Listed in the Denominator equals Yes, proceed to check Procedure Performed.
3. Check Procedure Performed:
 - a. If Procedure as Listed in the Denominator equals No, do not include in Eligible Population. Stop Processing.
 - b. If Procedure as Listed in the Denominator equals Yes, include in Eligible Population.
4. Denominator Population:
 - a. Denominator Population is all Eligible Procedures in the Denominator. Denominator is represented as Denominator in the Sample Calculation listed at the end of this document. Letter d equals 80 procedures in the Sample Calculation.
5. Start Numerator
6. Check Mammogram Assessment Category of “Probably Benign” Documented:
 - a. If Mammogram Assessment Category of “Probably Benign” Documented equals Yes, include in Data Completeness Met and Performance Met.
 - b. Data Completeness Met and Performance Met letter is represented in the Data Completeness and Performance Rate in the Sample Calculation listed at the end of this document. Letter a equals 40 procedures in the Sample Calculation.
 - c. If Mammogram Assessment Category of “Probably Benign” Documented equals No, proceed to check Mammogram Assessment Category of “Incomplete: Need Additional Imaging Evaluation”, Documented.
7. Check Mammogram Assessment Category of “Incomplete: Need Additional Imaging Evaluation”, Documented:
 - a. If Mammogram Assessment Category of “Incomplete: Need Additional Imaging Evaluation”, Documented equals Yes, include in Data Completeness Met and Performance Not Met.
 - b. Data Completeness Met and Performance Not Met letter is represented in the Data Completeness in the Sample Calculation listed at the end of this document. Letter c¹ equals 10 procedures in the Sample Calculation.
 - c. If Mammogram Assessment Category of “Incomplete: Need Additional Imaging Evaluation”, Documented equals No, proceed to check Mammogram Assessment Category of “Negative” Documented.
8. Check Mammogram Assessment Category of “Negative”, Documented:

- a. If Mammogram Assessment Category of "Negative" Documented equals Yes, include in Data Completeness Met and Performance Not Met.
 - b. Data Completeness Met and Performance Not Met letter is represented in the Data Completeness in the Sample Calculation listed at the end of this document. Letter c² equals 10 procedures in the Sample Calculation.
 - c. If Mammogram Assessment Category of "Negative" Documented equals No, proceed to check Mammogram Assessment Category of "Benign" Documented.
9. Check Mammogram Assessment Category of "Benign", Documented:
- a. If Mammogram Assessment Category of "Benign" Documented equals Yes, include in Data Completeness Met and Performance Not Met.
 - b. Data Completeness Met and Performance Not Met letter is represented in the Data Completeness in the Sample Calculation listed at the end of this document. Letter c³ equals 0 procedures in the Sample Calculation.
 - c. If Mammogram Assessment Category of "Benign" Documented equals No, proceed to check Mammogram Assessment Category of "Suspicious" Documented.
10. Check Mammogram Assessment Category of "Suspicious" Documented:
- a. If Mammogram Assessment Category of "Suspicious" Documented equals Yes, include in Data Completeness Met and Performance Not Met.
 - b. Data Completeness Met and Performance Not Met letter is represented in the Data Completeness in the Sample Calculation listed at the end of this document. Letter c⁴ equals 0 procedures in the Sample Calculation.
 - c. If Mammogram Assessment Category of "Suspicious" Documented equals No, proceed to check Mammogram Assessment Category of "Highly Suggestive of Malignancy" Documented.
11. Check Mammogram Assessment Category of "Highly Suggestive of Malignancy", Documented:
- a. If Mammogram Assessment Category of "Highly Suggestive of Malignancy" Documented equals Yes, include in Data Completeness Met and Performance Not Met.
 - b. Data Completeness Met and Performance Not Met letter is represented in the Data Completeness in the Sample Calculation listed at the end of this document. Letter c⁵ equals 20 procedures in the Sample Calculation.
 - c. If Mammogram Assessment Category of "Highly Suggestive of Malignancy" Documented equals No, proceed to check Mammogram Assessment Category of "Known Biopsy Proven Malignancy" Documented.
12. Check Mammogram Assessment Category of "Known Biopsy Proven Malignancy", Documented:
- a. If Mammogram Assessment Category of "Known Biopsy Proven Malignancy" Documented equals Yes, include in Data Completeness Met and Performance Not Met.
 - b. Data Completeness Met and Performance Not Met letter is represented in the Data Completeness in the Sample Calculation listed at the end of this document. Letter c⁶ equals 0 procedures in the Sample Calculation.

- c. If Mammogram Assessment Category of “Known Biopsy Proven Malignancy” Documented equals No, proceed to check Data Completeness Not Met.

13. Check Data Completeness Not Met:

- a. If Data Completeness Not Met, the Quality Data Code or equivalent was not submitted. 0 procedures have been subtracted from the Data Completeness Numerator in the Sample Calculation.

SAMPLE CALCULATIONS:

Data Completeness=

$$\frac{\text{Performance Met (a=40 procedures)} + \text{Performance Not Met (c}^1+\text{c}^2+\text{c}^3+\text{c}^4+\text{c}^5+\text{c}^6 = 40 \text{ procedures)}}{\text{Eligible Population / Denominator (d=80 procedures)}} = \frac{80 \text{ procedures}}{80 \text{ procedures}} = 100.00\%$$

Performance Rate=**

$$\frac{\text{Performance Met (a=40 procedures)}}{\text{Data Completeness Numerator (80 procedures)}} = \frac{40 \text{ procedures}}{80 \text{ procedures}} = 50.00\%$$