

**Quality ID #176: Rheumatoid Arthritis (RA): Tuberculosis Screening**  
– National Quality Strategy Domain: Effective Clinical Care  
– Meaningful Measure Area: Management of Chronic Conditions

**2019 COLLECTION TYPE:**  
MIPS CLINICAL QUALITY MEASURES (CQMS)

**MEASURE TYPE:**  
Process

**DESCRIPTION:**  
Percentage of patients aged 18 years and older with a diagnosis of rheumatoid arthritis (RA) who have documentation of a tuberculosis (TB) screening performed and results interpreted within 12 months prior to receiving a first course of therapy using a biologic disease-modifying anti-rheumatic drug (DMARD)

**INSTRUCTIONS:**  
This measure is to be submitted a minimum of **once per performance period** for patients with a diagnosis of RA who are being considered or prescribed a first course of biologic disease-modifying anti-rheumatic drug therapy seen during the performance period. This measure may be submitted by Merit-based Incentive Payment System (MIPS) eligible clinicians who perform the quality actions described in the measure based on the services provided and the measure-specific denominator coding.

**Measure Submission Type:**  
Measure data may be submitted by individual MIPS eligible clinicians, groups, or third party intermediaries. The listed denominator criteria are used to identify the intended patient population. The numerator options included in this specification are used to submit the quality actions as allowed by the measure. The quality-data codes listed do not need to be submitted by MIPS eligible clinicians, groups, or third party intermediaries that utilize this modality for submissions; however, these codes may be submitted for those third party intermediaries that utilize Medicare Part B claims data. For more information regarding Application Programming Interface (API), please refer to the Quality Payment Program (QPP) website.

**DENOMINATOR:**  
All patients aged 18 years and older with a diagnosis of RA who are receiving a first course of therapy using a biologic DMARD

**Denominator Instructions:**  
Patients are considered to be receiving a first course of therapy using a biologic DMARD only if they have never previously been prescribed or dispensed a biologic DMARD.

**Denominator Criteria (Eligible Cases):**  
Patients aged  $\geq$  18 years on date of encounter

**AND**  
**Diagnosis for rheumatoid arthritis (RA) (ICD-10-CM):** M05.00, M05.011, M05.012, M05.019, M05.021, M05.022, M05.029, M05.031, M05.032, M05.039, M05.041, M05.042, M05.049, M05.051, M05.052, M05.059, M05.061, M05.062, M05.069, M05.071, M05.072, M05.079, M05.09, M05.10, M05.111, M05.112, M05.119, M05.121, M05.122, M05.129, M05.131, M05.132, M05.139, M05.141, M05.142, M05.149, M05.151, M05.152, M05.159, M05.161, M05.162, M05.169, M05.171, M05.172, M05.179, M05.19, M05.20, M05.211, M05.212, M05.219, M05.221, M05.222, M05.229, M05.231, M05.232, M05.239, M05.241, M05.242, M05.249, M05.251, M05.252, M05.259, M05.261, M05.262, M05.269, M05.271, M05.272, M05.279, M05.29, M05.30, M05.311, M05.312, M05.319, M05.321, M05.322, M05.329, M05.331, M05.332, M05.339, M05.341, M05.342, M05.349, M05.351, M05.352, M05.359, M05.361, M05.362, M05.369, M05.371, M05.372, M05.379, M05.39, M05.40, M05.411, M05.412, M05.419, M05.421, M05.422, M05.429,

M05.431, M05.432, M05.439, M05.441, M05.442, M05.449, M05.451, M05.452, M05.459, M05.461, M05.462, M05.469, M05.471, M05.472, M05.479, M05.49, M05.50, M05.511, M05.512, M05.519, M05.521, M05.522, M05.529, M05.531, M05.532, M05.539, M05.541, M05.542, M05.549, M05.551, M05.552, M05.559, M05.561, M05.562, M05.569, M05.571, M05.572, M05.579, M05.59, M05.60, M05.611, M05.612, M05.619, M05.621, M05.622, M05.629, M05.631, M05.632, M05.639, M05.641, M05.642, M05.649, M05.651, M05.652, M05.659, M05.661, M05.662, M05.669, M05.671, M05.672, M05.679, M05.69, M05.70, M05.711, M05.712, M05.719, M05.721, M05.722, M05.729, M05.731, M05.732, M05.739, M05.741, M05.742, M05.749, M05.751, M05.752, M05.759, M05.761, M05.762, M05.769, M05.771, M05.772, M05.779, M05.79, M05.80, M05.811, M05.812, M05.819, M05.821, M05.822, M05.829, M05.831, M05.832, M05.839, M05.841, M05.842, M05.849, M05.851, M05.852, M05.859, M05.861, M05.862, M05.869, M05.871, M05.872, M05.879, M05.89, M05.9, M06.00, M06.011, M06.012, M06.019, M06.021, M06.022, M06.029, M06.031, M06.032, M06.039, M06.041, M06.042, M06.049, M06.051, M06.052, M06.059, M06.061, M06.062, M06.069, M06.071, M06.072, M06.079, M06.08, M06.09, M06.1, M06.20, M06.211, M06.212, M06.219, M06.221, M06.222, M06.229, M06.231, M06.232, M06.239, M06.241, M06.242, M06.249, M06.251, M06.252, M06.259, M06.261, M06.262, M06.269, M06.271, M06.272, M06.279, M06.28, M06.29, M06.30, M06.311, M06.312, M06.319, M06.321, M06.322, M06.329, M06.331, M06.332, M06.339, M06.341, M06.342, M06.349, M06.351, M06.352, M06.359, M06.361, M06.362, M06.369, M06.371, M06.372, M06.379, M06.38, M06.39, M06.80, M06.811, M06.812, M06.819, M06.821, M06.822, M06.829, M06.831, M06.832, M06.839, M06.841, M06.842, M06.849, M06.851, M06.852, M06.859, M06.861, M06.862, M06.869, M06.871, M06.872, M06.879, M06.88, M06.89, M06.9

**AND**

**Patient encounter during the performance period (CPT or HCPCS):** 99201, 99202, 99203, 99204, 99205, 99212, 99213, 99214, 99215, 99341, 99342, 99343, 99344, 99345, 99347, 99348, 99349, 99350, G0402

**WITHOUT**

**Telehealth Modifier:** GQ, GT, 95, POS 02

**AND**

**Patient receiving first-time biologic disease modifying anti-rheumatic drug therapy for rheumatoid arthritis:** 4195F

**NUMERATOR:**

Patients for whom a TB screening was performed and results interpreted within 12 months prior to receiving a first course of therapy using a biologic DMARD

**Definition:**

**Biologic DMARD Therapy** – Includes Adalimumab, Etanercept, Infliximab, Abatacept, Anakinra, Rituximab, Certolizumab pegol (Cimzia), Tocilizumab, Golimumab (Simponi), Humira, Enbrel, Orencia, Remicade, Rituxan, Actemra, Kineret, Xeljanz, Tofacitinib, Kevzara (Sarilumab), Inflectra (Infliximab-dyyb), Renflexis, (Infliximab-abda), Ixifi (Infliximab-qbtx), Erelzi (Etanercept-szss), Amjevita (Adalimumab-atto), Cyltezo, (Adalimumab-adbm).

**Numerator Options:**

***Performance Met:***

TB screening performed and results interpreted within twelve months prior to initiation of first-time biologic disease modifying anti-rheumatic drug therapy for RA (M1003)

**OR**

***Denominator Exception:***

Documentation of medical reason for not screening for TB or interpreting results (i.e., patient positive for TB and documentation of past treatment; patient who has

recently completed a course of anti-TB therapy)  
(M1004)

**OR**

**Performance Not Met:**

TB screening not performed or results not interpreted,  
reason not given (M1005)

**RATIONALE:**

Before initiating biologic DMARDs for a patient with RA, it is essential to screen the patient for tuberculosis, as research has documented a higher incidence of TB after anti-TNF $\alpha$  therapy. All patients being considered for biologic DMARD should receive a tuberculin skin test, even if the patient has previously received the BCG vaccination. Test results, in addition to patient risk for TB and other tests, should be used to assess the patient's risk for latent TB infection. This is a patient safety measure.

**CLINICAL RECOMMENDATION STATEMENTS:**

The American College of Rheumatology recommends screening to identify latent TB infection (LTBI) in all RA patients being considered for therapy with biologic agents, regardless of the presence of risk factors for LTBI. (Level of Evidence: C) (ACR, 2012)

**COPYRIGHT:**

The Measures are not clinical guidelines, do not establish a standard of medical care, and have not been tested for all potential applications.

The Measures, while copyrighted, can be reproduced and distributed, without modification, for noncommercial purposes, e.g., use by health care providers in connection with their practices. Commercial use is defined as the sale, license, or distribution of the Measures for commercial gain, or incorporation of the Measures into a product or service that is sold, licensed or distributed for commercial gain.

Commercial uses of the Measures require a license agreement between the user and the American Medical Association (AMA), [on behalf of the Physician Consortium for Performance Improvement® (PCPI®)] or American College of Rheumatology (ACR). Neither the AMA, ACR, PCPI, nor its members shall be responsible for any use of the Measures.

**The AMA's, PCPI's and National Committee for Quality Assurance's significant past efforts and contributions to the development and updating of the Measures is acknowledged. ACR is solely responsible for the review and enhancement ("Maintenance") of the Measures as of July 25, 2014.**

ACR encourages use of the Measures by other health care professionals, where appropriate.

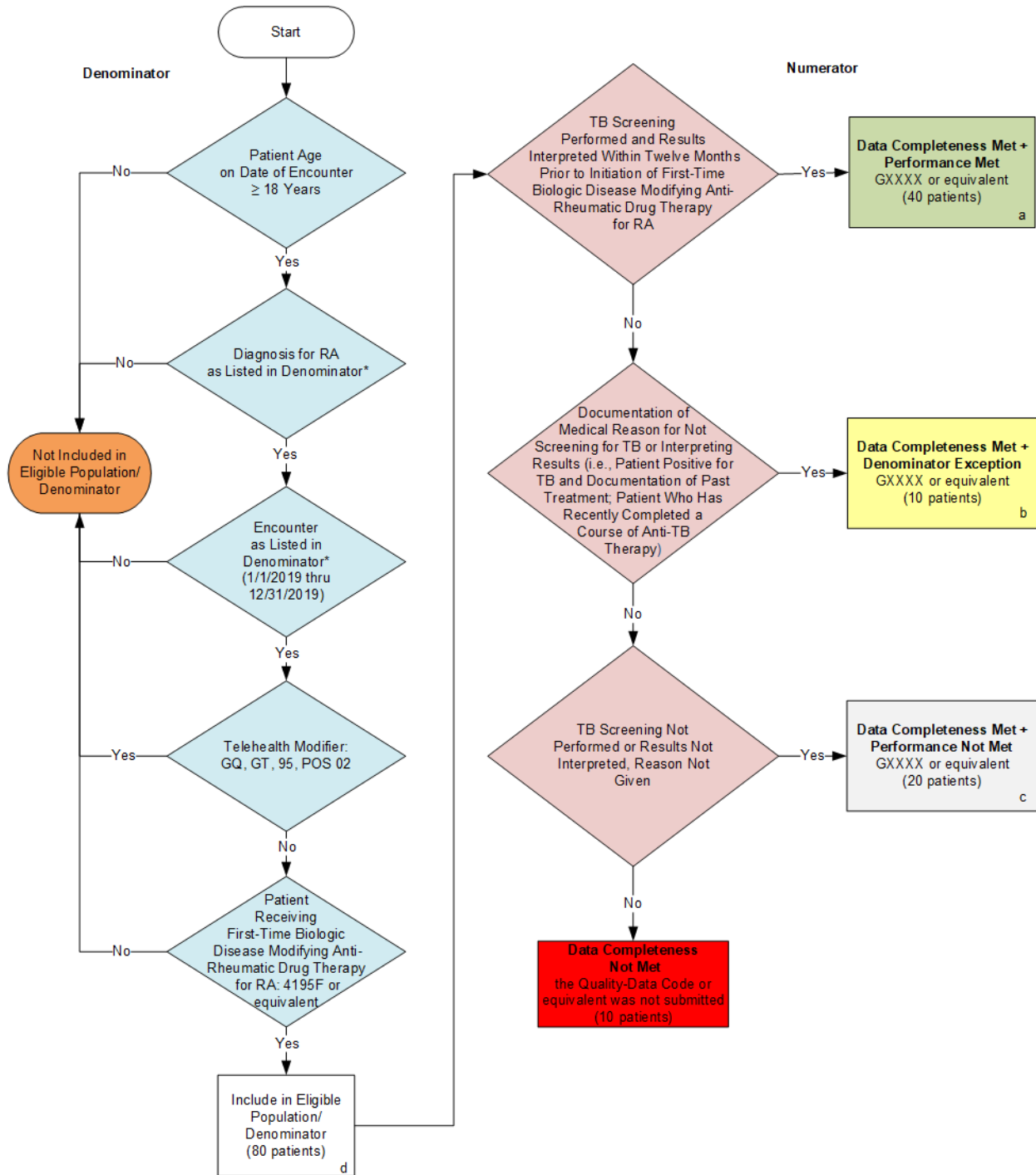
**THE MEASURES AND SPECIFICATIONS ARE PROVIDED "AS IS" WITHOUT WARRANTY OF ANY KIND.**

© 2014 American Medical Association and American College of Rheumatology. All Rights Reserved. Applicable FARS/DFARS Restrictions Apply to Government Use.

Limited proprietary coding is contained in the Measure specifications for convenience. Users of the proprietary code sets should obtain all necessary licenses from the owners of these code sets. The AMA, ACR, the PCPI and its members disclaim all liability for use or accuracy of any Current Procedural Terminology (CPT®) or other coding contained in the specifications.

CPT® contained in the Measures specifications is copyright 2004-2018 American Medical Association. LOINC® copyright 2004-2018 Regenstrief Institute, Inc. SNOMED CLINICAL TERMS (SNOMED CT®) copyright 2004-2018 College of American Pathologists. All Rights Reserved.

## 2019 Clinical Quality Measure Flow for Quality ID #176: Rheumatoid Arthritis (RA): Tuberculosis Screening



\*See the posted Measure Specification for specific coding and instructions to submit this measure.  
NOTE: Submission Frequency: Patient-process

CPT only copyright 2018 American Medical Association. All rights reserved.  
The measure diagrams were developed by CMS as a supplemental resource to be used in conjunction with the measure specifications. They should not be used alone or as a substitution for the measure specification.

## 2019 Clinical Quality Measure Flow for Quality ID #176: Rheumatoid Arthritis (RA): Tuberculosis Screening

### SAMPLE CALCULATIONS:

Data Completeness =

$$\frac{\text{Performance Met (a=40 patients)} + \text{Denominator Exception (b=10 patients)} + \text{Performance Not Met (c=20 patients)}}{\text{Eligible Population / Denominator (d=80 patients)}} = \frac{70 \text{ patients}}{80 \text{ patients}} = 87.50\%$$

Performance Rate =

$$\frac{\text{Performance Met (a=40 patients)}}{\text{Data Completeness Numerator (70 patients) - Denominator Exception (b=10 patients)}} = \frac{40 \text{ patients}}{60 \text{ patients}} = 66.67\%$$

NOTE: Submission Frequency: Patient-process

CPT only copyright 2018 American Medical Association. All rights reserved.  
The measure diagrams were developed by CMS as a supplemental resource to be used  
in conjunction with the measure specifications. They should not be used alone or as a  
substitution for the measure specification. v2

**2019 Clinical Quality Measure Flow Narrative for Quality ID #176:  
Rheumatoid Arthritis (RA): Tuberculosis Screening**

Please refer to the specific section of the specification to identify the denominator and numerator information for use in submitting this Individual Specification.

1. Start with Denominator
2. Check Patient Age:
  - a. If Patients Age is greater than or equal to 18 Years on Date of Encounter and equals No during the measurement period, do not include in Eligible Population. Stop Processing.
  - b. If Patients Age is greater than or equal to 18 Years on Date of Encounter and equals Yes during the measurement period, proceed to check Patient Diagnosis.
3. Check Patient Diagnosis:
  - a. If Diagnosis for RA as Listed in the Denominator equals No, do not include in Eligible Population. Stop Processing.
  - b. If Diagnosis of RA as Listed in the Denominator equals Yes, proceed to check Encounter Performed.
4. Check Encounter Performed:
  - a. If Encounter as Listed in the Denominator equals No, do not include in Eligible Population. Stop Processing.
  - b. If Encounter as Listed in the Denominator equals Yes, proceed to check Telehealth Modifier.
5. Check Telehealth Modifier:
  - a. If Telehealth Modifier as Listed in the Denominator equals Yes, do not include in Eligible Population. Stop Processing.
  - b. If Telehealth Modifier as Listed in the Denominator equals No, proceed to check Patient Receiving First-Time Biologic Disease Modifying Anti-Rheumatic Drug Therapy for RA.
6. Check Patient Receiving First-Time Biologic Disease Modifying Anti-Rheumatic Drug Therapy for RA:
  - a. If Patient Receiving First-Time Biologic Disease Modifying Anti-Rheumatic Drug Therapy for RA equals No, do not include in Eligible Population. Stop Processing.
  - b. If Patient Receiving First-Time Biologic Disease Modifying Anti-Rheumatic Drug Therapy for RA equals Yes, include in Eligible Population.
7. Denominator Population:
  - a. Denominator Population is all Eligible Patients in the Denominator. Denominator is represented as Denominator in the Sample Calculation listed at the end of this document. Letter d equals 80 patients in the Sample Calculation.
8. Start Numerator

9. Check TB Screening Performed and Results Interpreted Within Twelve Months Prior to Initiation of First-Time Biologic Disease Modifying Anti-Rheumatic Drug Therapy for RA:
  - a. If TB Screening Performed and Results Interpreted Within Twelve Months Prior to Initiation of First-Time Biologic Disease Modifying Anti-Rheumatic Drug Therapy for RA equals Yes, include in Data Completeness Met and Performance Met.
  - b. Data Completeness Met and Performance Met letter is represented in the Data Completeness and Performance Rate in the Sample Calculation listed at the end of this document. Letter a equals 40 patients in the Sample Calculation.
  - c. If TB Screening Performed and Results Interpreted Within Twelve Months Prior to Initiation of First-Time Biologic Disease Modifying Anti-Rheumatic Drug Therapy for RA equals No, proceed to check Documentation of Medical Reason for Not Screening for TB or Interpreting Results (i.e., patient positive for TB and Documentation of Past Treatment; patient who has recently completed a course of Anti-TB Therapy).
10. Check Documentation of Medical Reason for Not Screening for TB or Interpreting Results (i.e., patient positive for TB and Documentation of Past Treatment; patient who has recently completed a course of Anti-TB Therapy):
  - a. If Documentation of Medical Reason for Not Screening for TB or Interpreting Results (i.e., patient positive for TB and Documentation of Past Treatment; patient who has recently completed a course of Anti-TB Therapy) equals Yes, include in Data Completeness Met and Denominator Exception.
  - b. Data Completeness Met and Denominator Exception letter is represented in the Data Completeness and Performance Rate in the Sample Calculation listed at the end of this document. Letter b equals 10 patients in the Sample Calculation.
  - c. If Documentation of Medical Reason for Not Screening for TB or Interpreting Results (i.e., patient positive for TB and Documentation of Past Treatment; patient who has recently completed a course of Anti-TB Therapy) equals No, proceed to check TB Screening Not Performed or Results Not Interpreted, Reason Not Otherwise Specified.
11. Check TB Screening Not Performed or Results Not Interpreted, Reason Not Given:
  - a. If TB Screening Not Performed or Results Not Interpreted, Reason Not Given equals Yes, include in Data Completeness Met and Performance Not Met.
  - b. Data Completeness Met and Performance Not Met letter is represented in the Data Completeness in the Sample Calculation listed at the end of this document. Letter c equals 20 patients in the Sample Calculation.
  - c. If TB Screening Not Performed or Results Not Interpreted, Reason Not Given equals No, proceed to check Data Completeness Not Met.
12. Check Data Completeness Not Met:
  - a. If Data Completeness Not Met, the Quality Data Code or equivalent was not submitted. 10 patients have been subtracted from the Data Completeness Numerator in the Sample Calculation.

**SAMPLE CALCULATIONS:**

**Data Completeness=**

$$\frac{\text{Performance Met (a=40 patients)} + \text{Denominator Exception (b=10 patients)} + \text{Performance Not Met (c=20 patients)}}{\text{Eligible Population / Denominator (d=80 patients)}} = \frac{70 \text{ patients}}{80 \text{ patients}} = 87.50\%$$

**Performance Rate=**

$$\frac{\text{Performance Met (a=40 patients)}}{\text{Data Completeness Numerator (70 patients) - Denominator Exception (b=10 patients)}} = \frac{40 \text{ patients}}{60 \text{ patients}} = 66.67\%$$