

Quality ID #69: Hematology: Multiple Myeloma: Treatment with Bisphosphonates

– National Quality Strategy Domain: Effective Clinical Care

– Meaningful Measure Area: Management of Chronic Conditions

2020 COLLECTION TYPE:

MIPS CLINICAL QUALITY MEASURES (CQMS)

MEASURE TYPE:

Process

DESCRIPTION:

Percentage of patients aged 18 years and older with a diagnosis of multiple myeloma, not in remission, who were prescribed or received intravenous bisphosphonate therapy within the 12-month reporting period

INSTRUCTIONS:

This measure is to be submitted a minimum of **once per performance period** for all multiple myeloma (not in remission) patients seen during the performance period. It is anticipated that Merit-based Incentive Payment System (MIPS) eligible clinicians who provide services for the patients with the diagnosis of multiple myeloma (not in remission) will submit this measure.

Measure Submission Type:

Measure data may be submitted by individual MIPS eligible clinicians, groups, or third party intermediaries. The listed denominator criteria are used to identify the intended patient population. The numerator options included in this specification are used to submit the quality actions as allowed by the measure. The quality-data codes listed do not need to be submitted by MIPS eligible clinicians, groups, or third party intermediaries that utilize this modality for submissions; however, these codes may be submitted for those third party intermediaries that utilize Medicare Part B claims data. For more information regarding Application Programming Interface (API), please refer to the Quality Payment Program (QPP) website.

DENOMINATOR:

All patients aged 18 years and older with a diagnosis of multiple myeloma, not in remission

DENOMINATOR NOTE: **Signifies that this CPT Category I code is a non-covered service under the Medicare Part B Physician Fee Schedule (PFS). These non-covered services should be counted in the denominator population for MIPS CQMs*

Denominator Criteria (Eligible Cases):

Patients aged \geq 18 years on date of encounter

AND

Diagnosis for multiple myeloma – not in remission (ICD-10-CM): C90.00, C90.02

AND

Patient encounter during the performance period (CPT): 99201, 99202, 99203, 99204, 99205, 99212, 99213, 99214, 99215, 99241*, 99242*, 99243*, 99244*, 99245*

WITHOUT

Telehealth Modifier: GQ, GT, 95, POS 02

NUMERATOR:

Patients who were prescribed or received intravenous bisphosphonate therapy within the 12-month reporting period

NUMERATOR NOTE: *In the event that a patient with multiple myeloma is prescribed or is receiving an alternate treatment (e.g., denosumab or other anti-resorptive agents) for a medical reason, submit CPT category II code 4100F-1P. Denominator Exception(s) are determined on the date of the denominator eligible encounter.*

Definitions:

Bisphosphonate Therapy – Includes the following medications: pamidronate and zoledronate.

Prescribed – Includes patients who are currently receiving medication(s) that follow the treatment plan recommended at an encounter during the performance period, even if the prescription for that medication was ordered prior to the encounter.

Numerator Options:

Performance Met:

Bisphosphonate therapy, intravenous, ordered or received **(4100F)**

OR

Denominator Exception:

Documentation of medical reason(s) for not prescribing bisphosphonates (e.g., patients who do not have bone disease, patients with dental disease, patients with renal insufficiency) **(4100F with 1P)**

OR

Denominator Exception:

Documentation of patient reason(s) for not prescribing bisphosphonates **(4100F with 2P)**

OR

Performance Not Met:

Bisphosphonate therapy, intravenous, not ordered or received, reason not otherwise specified **(4100F with 8P)**

RATIONALE:

Multiple myeloma is a disease characterized by bone destruction, in the form of diffuse osteopenia and/or osteolytic lesions, which develop in a significant number of patients. Bisphosphonates can inhibit bone resorption by reducing the number and activity of osteoclasts.

Bisphosphonates have played an important palliative role in the care of patients with multiple myeloma. Use of these agents has demonstrated benefit in reducing painful bony complications.

CLINICAL RECOMMENDATION STATEMENTS:

The following clinical recommendation statements are quoted verbatim from the referenced clinical guidelines:

Bony manifestations of myeloma, in the form of diffuse osteopenia and/or osteolytic lesions, develop in 85% of patients. Related complications are the major cause of limitations in quality of life and performance status in patients with MM. (NCCN, 2018)

A recent meta-analysis of 20 randomized controlled trials of comparing bisphosphonates with either placebo or a different bisphosphonate as a comparator concluded that adding bisphosphonates to the treatment of MM reduces vertebral fractures and probably reduces pain. (NCCN, 2018)

The NCCN Guidelines for Multiple Myeloma recommend bisphosphonates for all patients receiving myeloma therapy for symptomatic disease regardless of documented bone disease. (Category 1 Recommendation) (NCCN, 2018)

In patients with smoldering or stage I MM, according to the NCCN Panel, bisphosphonates may be considered but preferably in a clinical trial. (Category 2A Recommendation) (NCCN, 2018)

The Expert Panel supports starting intravenous bisphosphonates in patients with multiple myeloma with osteopenia (osteoporosis), but no radiographic evidence of lytic bone disease. (ASCO, 2018)

For those patients for whom bisphosphonates were withdrawn after 2 years, the drug should be resumed upon relapse with new-onset skeletal-related events. (ASCO, 2018)

COPYRIGHT:

The Measure is not a clinical guideline, does not establish a standard of medical care, and has not been tested for all potential applications.

The Measure, while copyrighted, can be reproduced and distributed, without modification, for noncommercial purposes, eg, use by health care providers in connection with their practices. Commercial use is defined as the sale, license, or distribution of the Measure for commercial gain, or incorporation of the Measure into a product or service that is sold, licensed or distributed for commercial gain.

Commercial uses of the Measure require a license agreement between the user and the PCPI® Foundation (PCPI®) or American Society of Hematology (ASH). Neither ASH, nor the American Medical Association (AMA), nor the former AMA-convened Physician Consortium for Performance Improvement® (AMA-PCPI), nor PCPI, nor their members shall be responsible for any use of the Measure.

The AMA's and AMA-PCPI's significant past efforts and contributions to the development and updating of the Measure is acknowledged. ASH is solely responsible for the review and enhancement ("Maintenance") of the Measure as of August 15, 2014.

ASH encourages use of the Measure by other health care professionals, where appropriate.

THE MEASURE AND SPECIFICATIONS ARE PROVIDED "AS IS" WITHOUT WARRANTY OF ANY KIND.

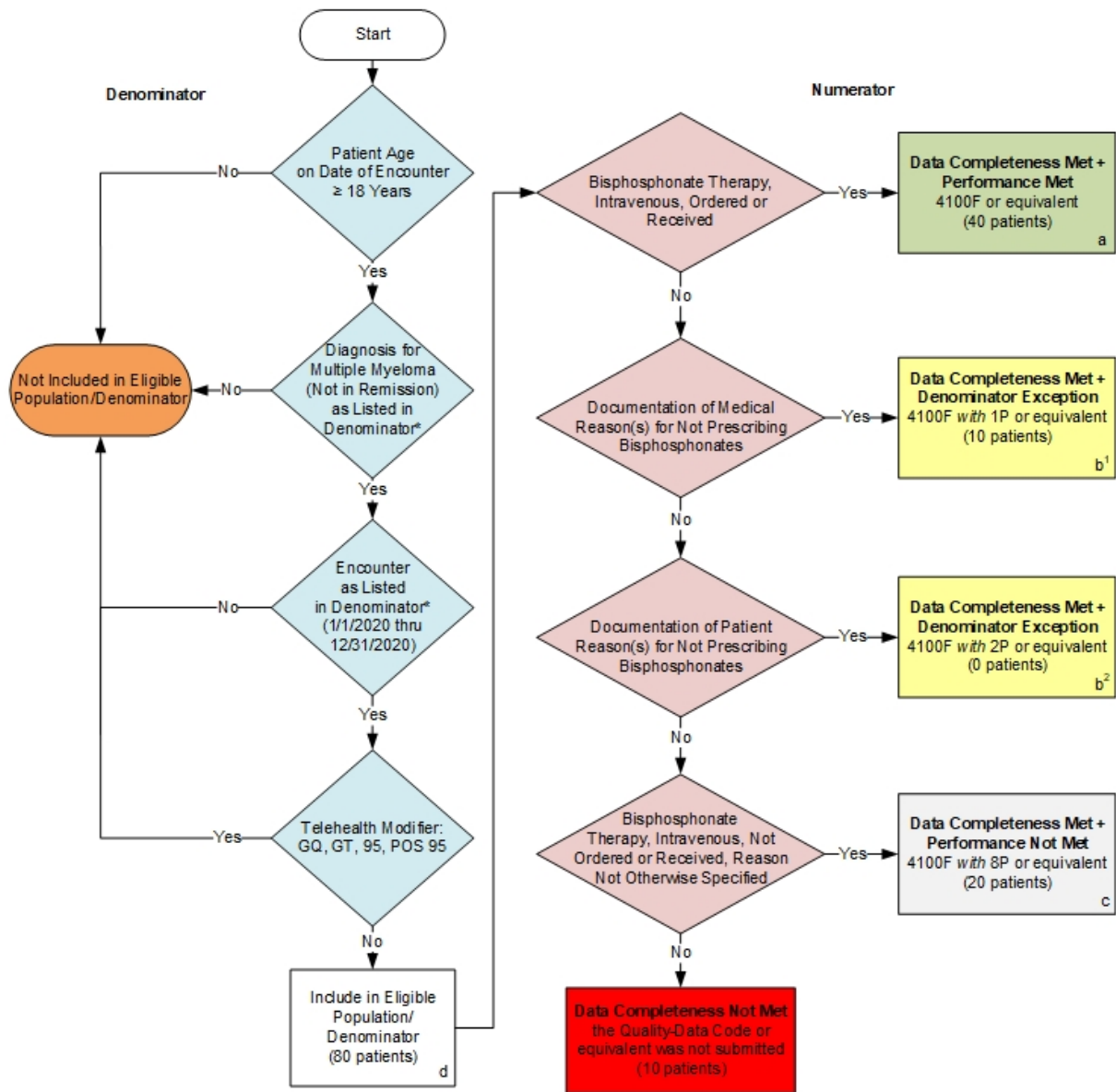
© 2019 PCPI® Foundation and American Society of Hematology. All Rights Reserved.

Limited proprietary coding is contained in the Measure specifications for convenience. Users of the proprietary code sets should obtain all necessary licenses from the owners of these code sets. ASH, the AMA, the PCPI and its members and former members of the AMA-PCPI disclaim all liability for use or accuracy of any Current Procedural Terminology (CPT®) or other coding contained in the specifications.

CPT® contained in the Measure specifications is copyright 2004-2019 American Medical Association. LOINC® is copyright 2004-2019 Regenstrief Institute, Inc. This material contains SNOMED Clinical Terms® (SNOMED CT®) copyright 2004-2019 International Health Terminology Standards Development Organisation. ICD-10 is copyright 2019 World Health Organization. All Rights Reserved.

2020 Clinical Quality Measure Flow for Quality ID #69: Hematology: Multiple Myeloma: Treatment with Bisphosphonates

Disclaimer: Refer to the measure specification for specific coding and instructions to submit this measure.



SAMPLE CALCULATIONS:

Data Completeness=

$$\frac{\text{Performance Met (a=40 patients)} + \text{Denominator Exception (b}^1\text{+b}^2\text{=10 patients)} + \text{Performance Not Met (c=20 patients)}}{\text{Eligible Population / Denominator (d=80 patients)}} = \frac{70 \text{ patients}}{80 \text{ patients}} = 87.50\%$$

Performance Rate=

$$\frac{\text{Performance Met (a=40 patients)}}{\text{Data Completeness Numerator (70 patients) - Denominator Exception (b}^1\text{+b}^2\text{=10 patients)}} = \frac{40 \text{ patients}}{60 \text{ patients}} = 66.67\%$$

*See the posted measure specification for specific coding and instructions to submit this measure.
 NOTE: Submission Frequency: Patient-Process

CPT only copyright 2019 American Medical Association. All rights reserved.
 The measure diagrams were developed by CMS as a supplemental resource to be used in conjunction with the measure specifications. They should not be used alone or as a substitution for the measure specification.

**2020 Clinical Quality Measure Flow Narrative for Quality ID #69:
Hematology: Multiple Myeloma: Treatment with Bisphosphonates**

Disclaimer: Refer to the measure specification for specific coding and instructions to submit this measure.

1. Start with Denominator
2. Check Patient Age:
 - a. If Patient Age on Date of Encounter is greater than or equal to 18 Years equals No during the measurement period, do not include in Eligible Population. Stop Processing.
 - b. If Patient Age on Date of Encounter is greater than or equal to 18 Years equals Yes during the measurement period, proceed to check Patient Diagnosis.
3. Check Patient Diagnosis:
 - a. If Diagnosis of Multiple Myeloma (Not in Remission) as Listed in Denominator equals No, do not include in Eligible Population. Stop Processing.
 - b. If Diagnosis of Multiple Myeloma (Not in Remission) as Listed in Denominator equals Yes, proceed to check Encounter Performed.
4. Check Encounter Performed:
 - a. If Encounter Performed as Listed in Denominator equals No, do not include in Eligible Population. Stop Processing.
 - b. If Encounter Performed as Listed in Denominator equals Yes, proceed to check Telehealth Modifier.
5. Check Telehealth Modifier:
 - a. If Telehealth Modifier equals Yes, do not include in Eligible Population. Stop Processing.
 - b. If Telehealth Modifier equals No, include in the Eligible Population.
6. Denominator Population:
 - a. Denominator Population is all Eligible Patients in the Denominator. Denominator is represented as Denominator in the Sample Calculation listed at the end of this document. Letter d equals 80 patients in the Sample Calculation.
7. Start Numerator
8. Check Bisphosphonate Therapy, Intravenous, Ordered or Received:
 - a. If Bisphosphonate Therapy, Intravenous, Ordered or Received equals Yes, include in Data Completeness Met and Performance Met.
 - b. Data Completeness Met and Performance Met letter is represented in the Data Completeness and Performance Rate in the Sample Calculation listed at the end of this document. Letter a equals 40 patients in the Sample Calculation.

- c. If Bisphosphonate Therapy, Intravenous, Ordered or Received equals No, proceed to check Documentation of Medical Reason(s) for Not Prescribing Bisphosphonates.
9. Check Documentation of Medical Reason(s) for Not Prescribing Bisphosphonates:
- a. If Documentation of Medical Reason(s) for Not Prescribing Bisphosphonates equals Yes, include in Data Completeness Met and Denominator Exception.
 - b. Data Completeness Met and Denominator Exception letter is represented in the Data Completeness and Performance Rate in the Sample Calculation listed at the end of this document. Letter b¹ equals 10 patients in the Sample Calculation.
 - c. If Documentation of Medical Reason(s) for Not Prescribing Bisphosphonates equals No, proceed to check Documentation of Patient Reason(s) for Not Prescribing Bisphosphonates.
10. Check Documentation of Patient Reason(s) for Not Prescribing Bisphosphonates:
- a. If Documentation of Patient Reason(s) for Not Prescribing Bisphosphonates equals Yes, include in Data Completeness Met and Denominator Exception.
 - b. Data Completeness Met and Denominator Exception letter is represented in the Data Completeness and Performance Rate in the Sample Calculation listed at the end of this document. Letter b² equals 0 patients in the Sample Calculation.
 - c. If Documentation of Patient Reason(s) for Not Prescribing Bisphosphonates equals No, proceed to check Bisphosphonate Therapy, Intravenous, Not Ordered or Received, Reason Not Otherwise Specified.
11. Check Bisphosphonate Therapy, Intravenous, Not Ordered or Received, Reason Not Otherwise Specified:
- a. If Bisphosphonate Therapy, Intravenous, Not Ordered or Received, Reason Not Otherwise Specified equals Yes, include in Data Completeness Met and Performance Not Met.
 - b. Data Completeness Met and Performance Not Met letter is represented in the Data Completeness in the Sample Calculation listed at the end of this document. Letter c equals 20 patients in the Sample Calculation.
 - c. If Bisphosphonate Therapy, Intravenous, Not Ordered or Received, Reason Not Otherwise Specified equals No, proceed to check Data Completeness Not Met.
12. Check Data Completeness Not Met:
- a. If Data Completeness Not Met, the Quality Data Code or equivalent was not submitted. 10 patients have been subtracted from the Data Completeness Numerator in the Sample Calculation.

SAMPLE CALCULATION S:

Data Completeness=

$$\frac{\text{Performance Met (a=40 patients)} + \text{Denominator Exception (b}^1\text{+b}^2\text{= 10 patients)} + \text{Performance Not Met (c=20 patients)}}{\text{Eligible Population / Denominator (d=80 patients)}} = \frac{70 \text{ patients}}{80 \text{ patients}} = 87.50\%$$

Performance Rate=

$$\frac{\text{Performance Met (a=40 patients)}}{\text{Data Completeness Numerator (70 patients) – Denominator Exception (b}^1\text{+b}^2\text{= 10 patients)}} = \frac{40 \text{ patients}}{60 \text{ patients}} = 66.67\%$$