

Quality ID #470: Functional Status After Primary Total Knee Replacement
– National Quality Strategy Domain: Person and Caregiver-Centered Experience and Outcomes
– Meaningful Measure Area: Functional Outcomes

2020 COLLECTION TYPE:
MIPS CLINICAL QUALITY MEASURES (CQMS)

MEASURE TYPE:
Patient Reported Outcome – High Priority

DESCRIPTION:
For patients age 18 and older who had a primary total knee replacement procedure, functional status is rated by the patient as greater than or equal to 37 on the Oxford Knee Score (OKS) at one year (9 to 15 months) postoperatively

INSTRUCTIONS:
This measure is to be submitted **each time** a patient undergoes a total knee replacement during the denominator identification period. This measure may be submitted by Merit-based Incentive Payment System (MIPS) eligible clinicians who perform the quality actions described in the measure based on the services provided and the measure-specific denominator coding.

NOTE: *This measure is a target-based measure, where the numerator is met by having a one-year postoperative Oxford Knee Score (OKS) greater than or equal to 37. It is expressed as a proportion or rate. Patients having received a primary total knee replacement procedure who are not assessed for functional status postoperatively remain in the denominator and are considered as not meeting the target. The measure intent is that MIPS eligible clinicians will submit all denominator eligible procedures for performance calculation.*

Measure Submission Type:
Measure data may be submitted by individual MIPS eligible clinicians, groups, or third-party intermediaries. The listed denominator criteria are used to identify the intended patient population. The numerator options included in this specification are used to submit the quality actions as allowed by the measure. The quality-data codes listed do not need to be submitted by MIPS eligible clinicians, groups, or third-party intermediaries that utilize this modality for submissions; however, these codes may be submitted for those third party intermediaries that utilize Medicare Part B claims data. For more information regarding Application Programming Interface (API), please refer to the Quality Payment Program (QPP) website.

DENOMINATOR:
Patients 18 years of age or older as of October 1 of the denominator identification period who had a total knee replacement procedure performed during the denominator identification period

Definitions:
Denominator Identification Period - The twelve-month period in which eligible patients have a denominator eligible procedure. This allows for enough time for a follow-up assessment to occur during the twelve-month performance period. The denominator identification period includes dates of procedure 10/1/2018 to 9/30/2019.

Denominator Criteria (Eligible Cases):
Patients aged ≥ 18 years by October 1 of the Denominator Identification Period
AND
Patient procedure during performance period (CPT): 27445, 27446, 27447

NUMERATOR:

All eligible patients whose functional status is greater than or equal to 37 on the Oxford Knee Score (OKS) patient reported outcome tool at one year (9 to 15 months) postoperatively

Definitions:

Measure Assessment Period (Performance Period) - The period of time following the procedure date that is in which a postoperative Oxford Knee Score (OKS) functional status score can be obtained.

Postoperative Assessment Oxford Knee Score (OKS) - A postoperative Oxford Knee Score (OKS) functional assessment score can be obtained from the patient one year (9 to 15 months) after the date of procedure. Assessment scores obtained via a telephone screening or prior to 9 months and after 15 months postoperatively will not be used for measure calculation.

Oxford Knee Score (OKS) Patient Reported Outcome Tool - The Oxford Knee Score (OKS) is a 12-item patient-reported outcome (PRO) tool PRO specifically designed and developed to assess function and pain after total knee replacement (TKR) surgery (arthroplasty). It is short, reproducible, valid and sensitive to clinically important changes. The OKS was designed to be completed by the patient thus minimizing potential bias unwittingly introduced by surgeons when assessing the results themselves. The PRO was designed and developed by researchers at Oxford University Innovation and the University of Oxford. A copy of the tool can be obtained below or at the following link:

<https://innovation.ox.ac.uk/outcome-measures/oxford-knee-score-oks/>. Indicate that this tool is for use in a CMS program and licensing fees should be waived. <https://innovation.ox.ac.uk/clinical-outcomes/information-for-cms-members/>

OKS Target — A patient who is assessed postoperatively at one year (9 to 15 months) after the procedure rates their functional status score as greater than or equal to 37.

NUMERATOR NOTE: *The following situations are those in which the numerator targets cannot be reached and Performance Not Met (M1046) is submitted:*

- Oxford Knee Score (OKS) is not administered postoperatively at one year (9 to 15 Months)
- Functional status is measured using a different patient-reported functional status tool or Oxford Knee Score (OKS) version
- Postoperative Oxford Knee Score (OKS) is administered less than 9 Months or greater than 15 Months
- Postoperative Oxford Knee Score (OKS) score is less than 37

Numerator Options:

Performance Met:

Functional status measured by the Oxford Knee Score (OKS) at one year (9 to 15 months) postoperatively was greater than or equal to 37 (**M1045**)

OR

Performance Not Met:

Functional status was not measured by the Oxford Knee Score (OKS) at one year (9 to 15 months) postoperatively (**M1141**)

OR

Performance Not Met:

Functional status measured by the Oxford Knee Score (OKS) at one year (9 to 15 months) postoperatively was less than 37 (**M1046**)

RATIONALE:

Annually there are over 500,000 total knee replacement (TKR) procedures performed in the United States. It is projected that by 2030 the volume of this procedure will increase to over 3.48 million per year due to the aging baby-boomers, increased obesity and indications for TKR that extend to both younger as well as older patients (AAOS 2006 Kurtz). From 2000 to 2006, the Medicare TKR rate overall in the United States increased 58%, from 5.5 to 8.7 per 1000 and TKR revisions currently represent 8.2% of all Medicare dollars spent (Ong 2006). It is estimated that

annual hospital charges for TKR will approach 40.8 billion dollars annually by 2015 (Kaiser-Permanente 2007).

For the Minnesota Medicare population in 2006, 9,856 patients underwent a primary hip or knee replacement procedure (DRG 544) and 1,174 patients had a hip or knee revision (DRG 545). Nationally, for DRG 544 the average charge per hospitalization was \$38,447 with an average payment of \$11,916 (Value driven health care 2008 CMS).

Target was derived from a study "Patient acceptable symptom states after total hip or knee replacement at mid-term follow-up" [Kuerentjes JC, Van Tol FR Bone Joint Res 2014; 3:7–13]. Receiver operating characteristic (ROC) curves identified a PASS threshold of 42 for the Oxford Hip Score (OHS) after Total Hip Replacement (THR) and 37 for the OKS after TKR. THR patients with an OHS greater than or equal to 42 and TKR patients with an OKS greater than or equal to 37 had a higher NRS for satisfaction and a greater likelihood of being willing to undergo surgery again. The Patient Acceptable Symptom State (PASS), the highest level of symptom beyond which patients consider themselves well. PASS was compared to post-op OKS to determine an equivalent OKS threshold. OKS score greater than or equal to 37 indicates the achievement of an acceptable symptom state and correlates with a higher numeric rating scale for satisfaction [ROC curves PASS threshold of 37 with sensitivity of 76.3% and specificity of 76.5%]

CLINICAL RECOMMENDATION STATEMENT:

The American Association of Hip and Knee Surgeons (AAHKS) Total Knee Replacement Performance Measurement Set 2013 indicates a focus on collecting patient risk factors and implementing process measures with a future focus on outcome measures.

MEASURE CALCULATION EXAMPLE:

Patient	Post-op OKS	Met Numerator Target?
Patient A	39	Yes
Patient B	42	Yes
Patient C	35	No
Patient D	46	Yes
Patient E	Not assessed	No
Patient F	38	Yes
Patient G	Not assessed	No
Patient H	36	No
Patient I	43	Yes
Patient J	44	Yes
Rate		60%

COPYRIGHT:

© MN Community Measurement, 2019. All rights reserved.

CPT® contained in the Measure specifications is copyright 2004-2019 American Medical Association. All Rights Reserved.

MEASURE TOOL:

Oxford Knee Score (OKS) Patient Reported Outcome Tool:

PROBLEMS WITH YOUR KNEE

Check (✓) one box for every question.

1. During the past 4 weeks...

How would you describe the pain you usually have from your knee?

None	Very mild	Mild	Moderate	Severe
<input type="checkbox"/>	<input type="checkbox"/>	<input type="checkbox"/>	<input type="checkbox"/>	<input type="checkbox"/>

2. During the past 4 weeks...

Have you had any trouble with washing and drying yourself (all over) because of your knee?

No trouble at all	Very little trouble	Moderate trouble	Extreme difficulty	Impossible to do
<input type="checkbox"/>	<input type="checkbox"/>	<input type="checkbox"/>	<input type="checkbox"/>	<input type="checkbox"/>

3. During the past 4 weeks...

Have you had any trouble getting in and out of a car or using public transportation because of your knee? (whichever you would tend to use)

No trouble at all	Very little trouble	Moderate trouble	Extreme difficulty	Impossible to do
<input type="checkbox"/>	<input type="checkbox"/>	<input type="checkbox"/>	<input type="checkbox"/>	<input type="checkbox"/>

4. During the past 4 weeks...

For how long have you been able to walk before pain from your knee becomes **severe**? (with or without a cane)

No pain/more than 30 minutes	16 to 30 minutes	5 to 15 minutes	Around the house only	Not at all/severe pain when walking
<input type="checkbox"/>	<input type="checkbox"/>	<input type="checkbox"/>	<input type="checkbox"/>	<input type="checkbox"/>

5. During the past 4 weeks...

After a meal (sitting at a table), how painful has it been for you to stand up from a chair because of your knee?

Not at all painful	Slightly painful	Moderately painful	Very painful	Unbearable
<input type="checkbox"/>	<input type="checkbox"/>	<input type="checkbox"/>	<input type="checkbox"/>	<input type="checkbox"/>

6. During the past 4 weeks...

Have you been limping when walking because of your knee?

Rarely/never	Sometimes, or just at first	Often, not just at first	Most of the time	All of the time
<input type="checkbox"/>	<input type="checkbox"/>	<input type="checkbox"/>	<input type="checkbox"/>	<input type="checkbox"/>

7. During the past 4 weeks...

Could you kneel down and get up again afterwards?

Yes, easily	With little difficulty	With moderate difficulty	With extreme difficulty	No, impossible
<input type="checkbox"/>	<input type="checkbox"/>	<input type="checkbox"/>	<input type="checkbox"/>	<input type="checkbox"/>

8. During the past 4 weeks...

Have you been troubled by pain from your knee in bed at night?

No nights	Only 1 or 2 nights	Some nights	Most nights	Every night
<input type="checkbox"/>	<input type="checkbox"/>	<input type="checkbox"/>	<input type="checkbox"/>	<input type="checkbox"/>

9. During the past 4 weeks...

How much has pain from your knee interfered with your usual work (including housework)?

Not at all	A little bit	Moderately	Greatly	Totally
<input type="checkbox"/>	<input type="checkbox"/>	<input type="checkbox"/>	<input type="checkbox"/>	<input type="checkbox"/>

10. During the past 4 weeks...

Have you felt that your knee might suddenly "give out" or let you down?

Rarely/ never	Sometimes, or just at first	Often, not just at first	Most of the time	All of the time
<input type="checkbox"/>	<input type="checkbox"/>	<input type="checkbox"/>	<input type="checkbox"/>	<input type="checkbox"/>

11. During the past 4 weeks...

Could you do the grocery shopping on your own?

Yes, easily	With little difficulty	With moderate difficulty	With extreme difficulty	No, impossible
<input type="checkbox"/>	<input type="checkbox"/>	<input type="checkbox"/>	<input type="checkbox"/>	<input type="checkbox"/>

12. During the past 4 weeks...

Could you walk down one flight of stairs?

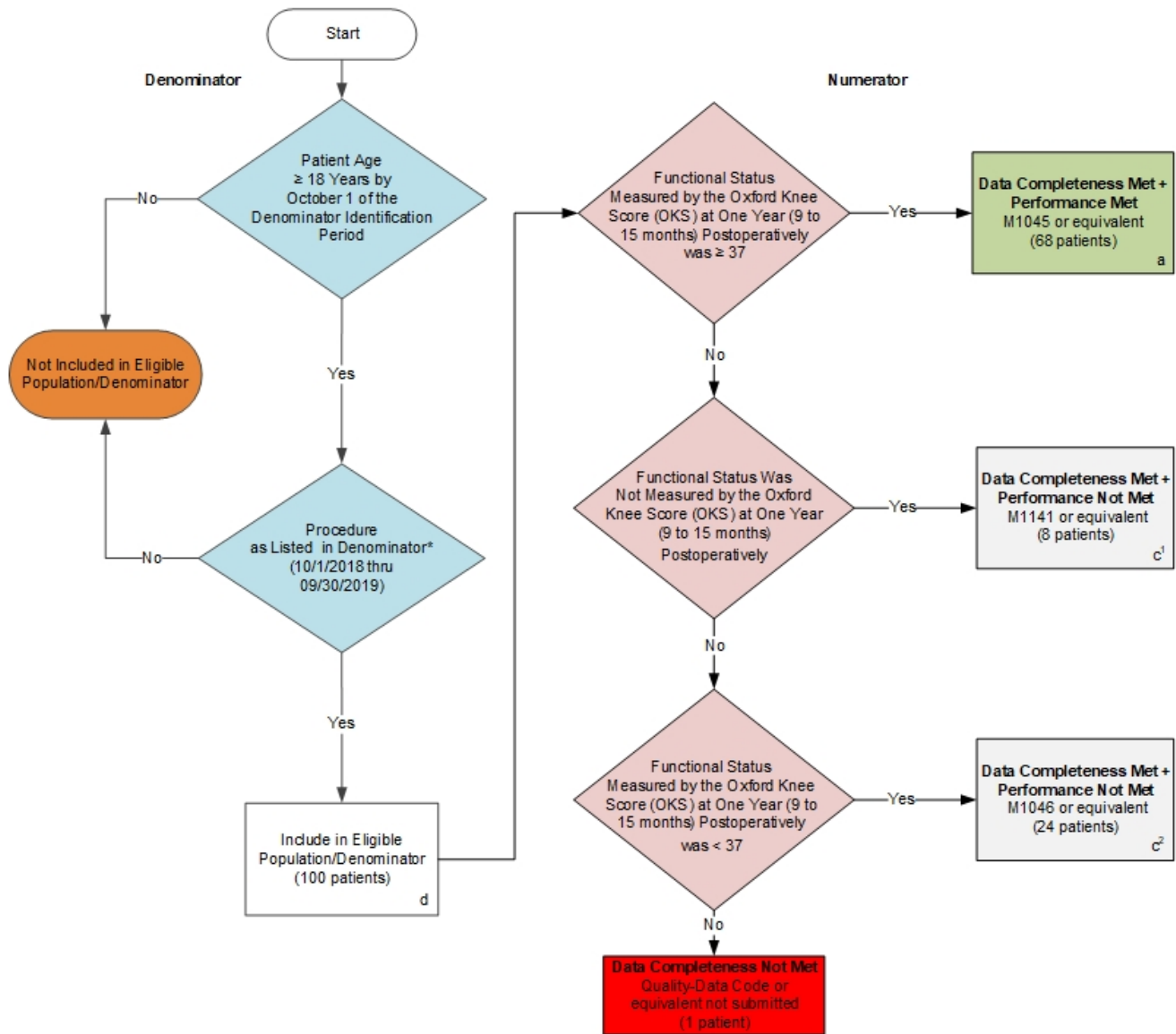
Yes, easily	With little difficulty	With moderate difficulty	With extreme difficulty	No, impossible
<input type="checkbox"/>	<input type="checkbox"/>	<input type="checkbox"/>	<input type="checkbox"/>	<input type="checkbox"/>

Finally, please check that you have answered each question.

Thank you very much.

2020 Clinical Quality Measure Flow for Quality ID #470: Functional Status After Primary Total Knee Replacement

Disclaimer: Refer to the measure specification for specific coding and instructions to submit this measure.



SAMPLE CALCULATIONS:

Data Completeness=

$$\frac{\text{Performance Met (a=68 patients)} + \text{Performance Not Met (c}^1\text{+c}^2\text{=32 patients)}}{\text{Eligible Population / Denominator (d=100 patients)}} = \frac{100 \text{ patients}}{100 \text{ patients}} = 100.00\%$$

Performance Rate=

$$\frac{\text{Performance Met (a=68 patients)}}{\text{Data Completeness Numerator (100 patients)}} = \frac{68 \text{ patients}}{100 \text{ patients}} = 68.00\%$$

*See the posted measure specification for specific coding and instructions to submit this measure.
 NOTE : Submission Frequency: Outcome

CPT only copyright 2019 American Medical Association. All rights reserved.
 The measure diagrams were developed by CMS as a supplemental resource to
 be used in conjunction with the measure specifications. They should not be
 used alone or as a substitution for the measure specification. v4

**2020 Clinical Quality Measure Flow Narrative for Quality ID #470:
Functional Status After Primary Total Knee Replacement**

Disclaimer: Refer to the measure specification for specific coding and instructions to submit this measure.

1. Start with Denominator
2. Check Patient Age:
 - a. If Patient Age is greater than or equal to 18 Years by October 1 of the Denominator Identification Period equals No, do not include in Eligible Population. Stop Processing.
 - b. If Patient Age is greater than or equal to 18 Years by October 1 of the Denominator Identification Period equals Yes, proceed to check Procedure Performed.
3. Check Procedure Performed:
 - a. If Procedure as Listed in Denominator equals No, do not include in Eligible Population. Stop Processing.
 - b. If Procedure as Listed in Denominator equals Yes, include in Eligible Population.
4. Denominator Population:
 - a. Denominator Population is all Eligible Patients in the Denominator. Denominator is represented as Denominator in the Sample Calculation listed at the end of this document. Letter d equals 100 patients in the Sample Calculation.
5. Start Numerator
6. Check Functional Status Measured by the Oxford Knee Score (OKS) at One Year (9 to 15 Months) Postoperatively was greater than or equal to 37:
 - a. If Functional Status Measured by the Oxford Knee Score (OKS) at One Year (9 to 15 Months) Postoperatively was greater than or equal to 37 equals Yes, include in Data Completeness and Performance Met.
 - b. Data Completeness Met and Performance Not Met letter is represented in the Data Completeness in the Sample Calculation listed at the end of this document. Letter a equals 68 patients in the Sample Calculation.
 - c. If Functional Status Measured by the Oxford Knee Score (OKS) at One Year (9 to 15 Months) Postoperatively was greater than or equal to 37 equals No, proceed to Functional Status Was Not Measured by the Oxford Knee Score (OKS) at One Year (9 to 15 Months) Postoperatively.
7. Check Functional Status Was Not Measured by the Oxford Knee Score (OKS) at One Year (9 to 15 Months) Postoperatively:
 - a. If Functional Status Was Not Measured by the Oxford Knee Score (OKS) at One Year (9 to 15 Months) Postoperatively equals Yes, include in Data Completeness Met and Performance Not Met.
 - b. Data Completeness Met and Performance Not Met letter is represented in the Data Completeness and Performance Rate Not Met in the Sample Calculation listed at the end of this document. Letter c¹ equals 8 patients in the Sample Calculation.

- c. If Functional Status Was Not Measured by the Oxford Knee Score (OKS) at One Year (9 to 15 Months) Postoperatively equals No, proceed to Functional Status Measured by the Oxford Knee Score (OKS) at One Year (9 to 15 Months) Postoperatively was less than 37.
8. Check Functional Status Measured by the Oxford Knee Score (OKS) at One Year (9 to 15 Months) Postoperatively was less than 37:
 - a. If Functional Status Measured by the Oxford Knee Score (OKS) at One Year (9 to 15 Months) Postoperatively was less than 37 equals Yes, include in Data Completeness Met and Performance Not Met.
 - b. Data Completeness Met and Performance Not Met letter is represented in the Data Completeness and Performance Rate Not Met in the Sample Calculation listed at the end of this document. Letter c² equals 24 patients in the Sample Calculation.
 - c. If Functional Status Measured by the Oxford Knee Score (OKS) at One Year (9 to 15 Months) Postoperatively was less than 37 equals No, proceed to check Data Completeness Not Met.
9. Check Data Completeness Not Met:
 - a. If Data Completeness Not Met, the Quality Data Code or equivalent was not submitted.

<u>SAMPLE CALCULATIONS:</u>				
Data Completeness=				
<u>Performance Met (a=68 patients) + Performance Not Met (c¹+c²=32 patients)</u>	=	<u>100 patients</u>	=	100.00%
Eligible Population / Denominator (d=100 patients)	=	100 patients		
Performance Rate=				
<u>Performance Met (a=68 patients)</u>	=	<u>68 patients</u>	=	68.00%
Data Completeness Numerator (100 patients)	=	100 patients		