

Quality ID #191 (NQF 0565): Cataracts: 20/40 or Better Visual Acuity within 90 Days Following Cataract Surgery
– National Quality Strategy Domain: Effective Clinical Care
– Meaningful Measure Area: Management of Chronic Conditions

2021 COLLECTION TYPE:

MIPS CLINICAL QUALITY MEASURES (CQMS)

MEASURE TYPE:

Outcome – High Priority

DESCRIPTION:

Percentage of cataract surgeries for patients aged 18 years and older with a diagnosis of uncomplicated cataract and no significant ocular conditions impacting the visual outcome of surgery and had best-corrected visual acuity of 20/40 or better (distance or near) achieved in the operative eye within 90 days following the cataract surgery

INSTRUCTIONS:

This measure is to be submitted **each time** a procedure for uncomplicated cataract is performed during the performance period. This measure is intended to reflect the quality of services provided for the patients receiving uncomplicated cataract surgery. This measure is to be submitted by the Merit-based Incentive Payment System (MIPS) eligible clinician performing the cataract surgery procedure. Clinicians who provide only preoperative or postoperative management of cataract surgery patients are not eligible for this measure.

Note: *This is an outcome measure and can be calculated solely using third party intermediary data.*

- *For patients who receive the cataract surgical procedures specified in the denominator coding, it should be reported whether or not the patient had best-corrected visual acuity of 20/40 or better achieved in the operative eye within 90 days following cataract surgery.*
- *Cataract surgeries performed on patients who have any of the listed significant ocular conditions [comorbid] in the exclusion criteria should be removed from the denominator; these patients have existing ocular conditions that could impact the outcome of surgery and are not included in the measure calculation for those patients who have best-corrected visual acuity of 20/40 or better (distance or near) achieved in the operative eye within 90 days following the cataract surgery.*
- *Include only cataract surgery procedures performed through **September 30th** of the performance period. This will allow the post-operative period to occur within the performance period.*

Measure Submission Type:

Measure data may be submitted by individual MIPS eligible clinicians, groups, or third party intermediaries. The listed denominator criteria are used to identify the intended patient population. The numerator options included in this specification are used to submit the quality actions as allowed by the measure. The quality-data codes listed do not need to be submitted by MIPS eligible clinicians, groups, or third party intermediaries that utilize this modality for submissions; however, these codes may be submitted for those third party intermediaries that utilize Medicare Part B claims data. For more information regarding Application Programming Interface (API), please refer to the Quality Payment Program (QPP) website.

DENOMINATOR:

All cataract surgeries for patients aged 18 years and older who did not meet any exclusion criteria

Denominator Criteria (Eligible Cases):

Patients aged ≥ 18 years on date of procedure

AND

Procedure during the performance period (CPT): 66840, 66850, 66852, 66920, 66930, 66940, 66982, 66983, 66984

WITHOUT

Modifier: 56 or 55

AND NOT

DENOMINATOR EXCLUSION:

Any of the following significant ocular conditions that impact the visual outcome of surgery
(Patients with documentation of the presence of one or more of the following significant ocular conditions that impact the visual outcome of surgery prior to date of cataract surgery which is still active at the time of the cataract surgery are excluded from the measure calculation)

Table 1 - Significant Ocular Conditions

Significant Ocular Condition	Corresponding ICD-10-CM Codes
Acute and Subacute Iridocyclitis	H20.00, H20.011, H20.012, H20.013, H20.021, H20.022, H20.023, H20.031, H20.032, H20.033, H20.041, H20.042, H20.043, H20.051, H20.052, H20.053
Amblyopia	H53.001, H53.002, H53.003, H53.011, H53.012, H53.013, H53.021, H53.022, H53.023, H53.031, H53.032, H53.033, H53.041, H53.042, H53.043
Burn Confined to Eye and Adnexa	T26.01XA, T26.02XA, T26.11XA, T26.12XA, T26.21XA, T26.22XA, T26.31XA, T26.32XA, T26.41XA, T26.42XA, T26.51XA, T26.52XA, T26.61XA, T26.62XA, T26.71XA, T26.72XA, T26.81XA, T26.82XA, T26.91XA, T26.92XA
Cataract Secondary to Ocular Disorders	H26.211, H26.212, H26.213, H26.221, H26.222, H26.223
Cataract, Congenital	Q12.0
Cataract, Mature or Hypermature	H26.9
Cataract, Posterior Polar	H25.041, H25.042, H25.043
Central Corneal Ulcer	H16.011, H16.012, H16.013
Certain Types of Iridocyclitis	H20.21, H20.22, H20.23, H20.811, H20.812, H20.813, H20.821, H20.822, H20.823, H20.9
Choroidal Degenerations	H35.33
Choroidal Detachment	H31.401, H31.402, H31.403, H31.411, H31.412, H31.413, H31.421, H31.422, H31.423
Choroidal Hemorrhage and Rupture	H31.301, H31.302, H31.303, H31.311, H31.312, H31.313, H31.321, H31.322, H31.323
Chronic Iridocyclitis	A18.54, H20.11, H20.12, H20.13, H20.9
Cloudy Cornea	H17.01, H17.02, H17.03, H17.11, H17.12, H17.13, H17.811, H17.812, H17.813, H17.821, H17.822, H17.823
Corneal Edema	H18.11, H18.12, H18.13, H18.20, H18.221, H18.222, H18.223, H18.231, H18.232, H18.233, H18.421, H18.422, H18.423, H18.43
Corneal Opacity and Other Disorders of Cornea	H17.01, H17.02, H17.03, H17.11, H17.12, H17.13, H17.89, H17.9
Degeneration of Macula and Posterior Pole	H35.30, H35.3110, H35.3111, H35.3112, H35.3113, H35.3114, H35.3120, H35.3121, H35.3122, H35.3123, H35.3124, H35.3130, H35.3131, H35.3132, H35.3133, H35.3134, H35.3210, H35.3211, H35.3212, H35.3213, H35.3220, H35.3221, H35.3222, H35.3223, H35.3230, H35.3231, H35.3232, H35.3233, H35.341, H35.342, H35.343, H35.351, H35.352, H35.353, H35.361, H35.362, H35.363, H35.371, H35.372, H35.373, H35.381, H35.382, H35.383

Significant Ocular Condition	Corresponding ICD-10-CM Codes
Degenerative Disorders of Globe	H44.2A1, H44.2A2, H44.2A3, H44.2B1, H44.2B2, H44.2B3, H44.2C1, H44.2C2, H44.2C3, H44.2D1, H44.2D2, H44.2D3, H44.2E1, H44.2E2, H44.2E3, H44.21, H44.22, H44.23, H44.311, H44.312, H44.313, H44.321, H44.322, H44.323, H44.391, H44.392, H44.393
Diabetic Macular Edema	E08.311, E08.3211, E08.3212, E08.3213, E08.3311, E08.3312, E08.3313, E08.3411, E08.3412, E08.3413, E08.3511, E08.3512, E08.3513, E08.3521, E08.3522, E08.3523, E08.3531, E08.3532, E08.3533, E08.3541, E08.3542, E08.3543, E08.3551, E08.3552, E08.3553, E08.37X1, E08.37X2, E08.37X3, E09.311, E09.3211, E09.3212, E09.3213, E09.3311, E09.3312, E09.3313, E09.3411, E09.3412, E09.3413, E09.3511, E09.3512, E09.3513, E09.3521, E09.3522, E09.3523, E09.3531, E09.3532, E09.3533, E09.3541, E09.3542, E09.3543, E09.3551, E09.3552, E09.3553, E09.37X1, E09.37X2, E09.37X3, E10.311, E10.3211, E10.3212, E10.3213, E10.3311, E10.3312, E10.3313, E10.3411, E10.3412, E10.3413, E10.3511, E10.3512, E10.3513, E10.3521, E10.3522, E10.3523, E10.3531, E10.3532, E10.3533, E10.3541, E10.3542, E10.3543, E10.3551, E10.3552, E10.3553, E10.37X1, E10.37X2, E10.37X3, E11.311, E11.3211, E11.3212, E11.3213, E11.3311, E11.3312, E11.3313, E11.3411, E11.3412, E11.3413, E11.3511, E11.3512, E11.3513, E11.3521, E11.3522, E11.3523, E11.3531, E11.3532, E11.3533, E11.3541, E11.3542, E11.3543, E11.3551, E11.3552, E11.3553, E11.37X1, E11.37X2, E11.37X3, E13.311, E13.3211, E13.3212, E13.3213, E13.3311, E13.3312, E13.3313, E13.3411, E13.3412, E13.3413, E13.3511, E13.3512, E13.3513, E13.3521, E13.3522, E13.3523, E13.3531, E13.3532, E13.3533, E13.3541, E13.3542, E13.3543, E13.3551, E13.3552, E13.3553, E13.37X1, E13.37X2, E13.37X3

Significant Ocular Condition	Corresponding ICD-10-CM Codes
Diabetic Retinopathy	E08.311, E08.319, E08.3211, E08.3212, E08.3213, E08.3291, E08.3292, E08.3293, E08.3311, E08.3312, E08.3313, E08.3391, E08.3392, E08.3393, E08.3411, E08.3412, E08.3413, E08.3491, E08.3492, E08.3493, E08.3511, E08.3512, E08.3513, E08.3521, E08.3522, E08.3523, E08.3531, E08.3532, E08.3533, E08.3541, E08.3542, E08.3543, E08.3551, E08.3552, E08.3553, E08.3591, E08.3592, E08.3593, E09.311, E09.319, E09.3211, E09.3212, E09.3213, E09.3291, E09.3292, E09.3293, E09.3311, E09.3312, E09.3313, E09.3391, E09.3392, E09.3393, E09.3411, E09.3412, E09.3413, E09.3491, E09.3492, E09.3493, E09.3511, E09.3512, E09.3513, E09.3521, E09.3522, E09.3523, E09.3531, E09.3532, E09.3533, E09.3541, E09.3542, E09.3543, E09.3551, E09.3552, E09.3553, E09.3591, E09.3592, E09.3593, E10.311, E10.319, E10.3211, E10.3212, E10.3213, E10.3291, E10.3292, E10.3293, E10.3311, E10.3312, E10.3313, E10.3391, E10.3392, E10.3393, E10.3411, E10.3412, E10.3413, E10.3491, E10.3492, E10.3493, E10.3511, E10.3512, E10.3513, E10.3521, E10.3522, E10.3523, E10.3531, E10.3532, E10.3533, E10.3541, E10.3542, E10.3543, E10.3551, E10.3552, E10.3553, E10.3591, E10.3592, E10.3593, E11.311, E11.319, E11.3211, E11.3212, E11.3213, E11.3291, E11.3292, E11.3293, E11.3311, E11.3312, E11.3313, E11.3391, E11.3392, E11.3393, E11.3411, E11.3412, E11.3413, E11.3491, E11.3492, E11.3493, E11.3511, E11.3512, E11.3513, E11.3521, E11.3522, E11.3523, E11.3531, E11.3532, E11.3533, E11.3541, E11.3542, E11.3543, E11.3551, E11.3552, E11.3553, E11.3591, E11.3592, E11.3593, E13.311, E13.319, E13.3211, E13.3212, E13.3213, E13.3291, E13.3292, E13.3293, E13.3311, E13.3312, E13.3313, E13.3391, E13.3392, E13.3393, E13.3411, E13.3412, E13.3413, E13.3491, E13.3492, E13.3493, E13.3511, E13.3512, E13.3513, E13.3521, E13.3522, E13.3523, E13.3531, E13.3532, E13.3533, E13.3541, E13.3542, E13.3543, E13.3551, E13.3552, E13.3553, E13.3591, E13.3592, E13.3593
Disorders of Optic Chiasm	H47.41, H47.42, H47.43, H47.49
Disorders of Visual Cortex	H47.611, H47.612, H47.621, H47.622, H47.631, H47.632, H47.641, H47.642
Disseminated Chorioretinitis and Disseminated Retinochoroiditis	A18.53, H30.101, H30.102, H30.103, H30.111, H30.112, H30.113, H30.121, H30.122, H30.123, H30.131, H30.132, H30.133, H30.141, H30.142, H30.143
Focal Chorioretinitis and Focal Retinochoroiditis	H30.001, H30.002, H30.003, H30.011, H30.012, H30.013, H30.021, H30.022, H30.023, H30.031, H30.032, H30.033, H30.041, H30.042, H30.043

Significant Ocular Condition	Corresponding ICD-10-CM Codes
Glaucoma	H40.10X0, H40.10X1, H40.10X2, H40.10X3, H40.10X4, H40.1110, H40.1111, H40.1112, H40.1113, H40.1114, H40.1120, H40.1121, H40.1122, H40.1123, H40.1124, H40.1130, H40.1131, H40.1132, H40.1133, H40.1134, H40.1210, H40.1211, H40.1212, H40.1213, H40.1214, H40.1220, H40.1221, H40.1222, H40.1223, H40.1224, H40.1230, H40.1231, H40.1232, H40.1233, H40.1234, H40.1310, H40.1311, H40.1312, H40.1313, H40.1314, H40.1320, H40.1321, H40.1322, H40.1323, H40.1324, H40.1330, H40.1331, H40.1332, H40.1333, H40.1334, H40.1410, H40.1411, H40.1412, H40.1413, H40.1414, H40.1420, H40.1421, H40.1422, H40.1423, H40.1424, H40.1430, H40.1431, H40.1432, H40.1433, H40.1434, H40.151, H40.152, H40.153, H40.20X0, H40.20X1, H40.20X2, H40.20X3, H40.20X4, H40.211, H40.212, H40.213, H40.2210, H40.2211, H40.2212, H40.2213, H40.2214, H40.2220, H40.2221, H40.2222, H40.2223, H40.2224, H40.2230, H40.2231, H40.2232, H40.2233, H40.2234, H40.231, H40.232, H40.233, H40.241, H40.242, H40.243, H40.31X0, H40.31X1, H40.31X2, H40.31X3, H40.31X4, H40.32X0, H40.32X1, H40.32X2, H40.32X3, H40.32X4, H40.33X0, H40.33X1, H40.33X2, H40.33X3, H40.33X4, H40.41X0, H40.41X1, H40.41X2, H40.41X3, H40.41X4, H40.42X0, H40.42X1, H40.42X2, H40.42X3, H40.42X4, H40.43X0, H40.43X1, H40.43X2, H40.43X3, H40.43X4, H40.51X0, H40.51X1, H40.51X2, H40.51X3, H40.51X4, H40.52X0, H40.52X1, H40.52X2, H40.52X3, H40.52X4, H40.53X0, H40.53X1, H40.53X2, H40.53X3, H40.53X4, H40.61X0, H40.61X1, H40.61X2, H40.61X3, H40.61X4, H40.62X0, H40.62X1, H40.62X2, H40.62X3, H40.62X4, H40.63X0, H40.63X1, H40.63X2, H40.63X3, H40.63X4, H40.811, H40.812, H40.813, H40.821, H40.822, H40.823, H40.831, H40.832, H40.833, H40.89, Q15.0
Glaucoma Associated with Congenital Anomalies, Dystrophies, and Systemic Syndromes	H40.31X0, H40.31X1, H40.31X2, H40.31X3, H40.31X4, H40.32X0, H40.32X1, H40.32X2, H40.32X3, H40.32X4, H40.33X0, H40.33X1, H40.33X2, H40.33X3, H40.33X4, H40.41X0, H40.41X1, H40.41X2, H40.41X3, H40.41X4, H40.42X0, H40.42X1, H40.42X2, H40.42X3, H40.42X4, H40.43X0, H40.43X1, H40.43X2, H40.43X3, H40.43X4, H40.51X0, H40.51X1, H40.51X2, H40.51X3, H40.51X4, H40.52X0, H40.52X1, H40.52X2, H40.52X3, H40.52X4, H40.53X0, H40.53X1, H40.53X2, H40.53X3, H40.53X4, H40.811, H40.812, H40.813, H40.821, H40.822, H40.823, H40.831, H40.832, H40.833, H40.89, H40.9, H42
Hereditary Choroidal Dystrophies	H31.20, H31.21, H31.22, H31.23, H31.29
Hereditary Corneal Dystrophies	H18.501, H18.502, H18.503, , H18.511, H18.512, H18.513, , H18.521, H18.522, H18.523, , H18.531, H18.532, H18.533, , H18.541, H18.542, H18.543, , H18.551, H18.552, H18.553, , H18.591, H18.592, H18.593
Hereditary Retinal Dystrophies	H35.50, H35.51, H35.52, H35.53, H35.54, H36
Hypotony of Eye	H44.40, H44.411, H44.412, H44.413, H44.421, H44.422, H44.423, H44.431, H44.432, H44.433, H44.441, H44.442, H44.443
Injury to Optic Nerve and Pathways	S04.011A, S04.012A, S04.02XA, S04.031A, S04.032A, S04.041A, S04.042A
Macular Scar of Posterior Polar	H31.011, H31.012, H31.013
Morgagnian Cataract	H25.21, H25.22, H25.23
Nystagmus and Other Irregular Eye Movements	H55.00, H55.01, H55.02, H55.03, H55.04, H55.09, H55.81, H55.89
Open Wound of Eyeball	S05.11XA, S05.12XA, S05.21XA, S05.22XA, S05.31XA, S05.32XA, S05.51XA, S05.52XA, S05.61XA, S05.62XA, S05.71XA, S05.72XA, S05.8X1A, S05.8X2A
Optic Atrophy	H47.20, H47.211, H47.212, H47.213, H47.22, H47.231, H47.232, H47.233, H47.291, H47.292, H47.293

Significant Ocular Condition	Corresponding ICD-10-CM Codes
Optic Neuritis	H46.01, H46.02, H46.03, H46.11, H46.12, H46.13, H46.2, H46.3, H46.8, H46.9
Other and Unspecified Forms of Chorioretinitis and Retinochoroiditis	H30.21, H30.22, H30.23, H30.811, H30.812, H30.813, H30.891, H30.892, H30.893, H30.91, H30.92, H30.93
Other Background Retinopathy and Retinal Vascular Changes	H35.021, H35.022, H35.023, H35.051, H35.052, H35.053, H35.061, H35.062, H35.063
Other Disorders of Optic Nerve	H47.011, H47.012, H47.013
Other Endophthalmitis	H16.241, H16.242, H16.243, H21.331, H21.332, H21.333, H33.121, H33.122, H33.123, H44.111, H44.112, H44.113, H44.121, H44.122, H44.123, H44.131, H44.132, H44.133, H44.19
Other Proliferative Retinopathy	H35.101, H35.102, H35.103, H35.111, H35.112, H35.113, H35.121, H35.122, H35.123, H35.131, H35.132, H35.133, H35.141, H35.142, H35.143, H35.151, H35.152, H35.153, H35.161, H35.162, H35.163, H35.171, H35.172, H35.173
Pathologic Myopia	H44.2A1, H44.2A2, H44.2A3, H44.2B1, H44.2B2, H44.2B3, H44.2C1, H44.2C2, H44.2C3, H44.2D1, H44.2D2, H44.2D3, H44.2E1, H44.2E2, H44.2E3, H44.21, H44.22, H44.23, H44.30
Posterior Lenticonus	Q12.2, Q12.4, Q12.8
Prior Penetrating Keratoplasty	H18.601, H18.602, H18.603, H18.611, H18.612, H18.613, H18.621, H18.622, H18.623
Purulent Endophthalmitis	H44.001, H44.002, H44.003, H44.011, H44.012, H44.013, H44.021, H44.022, H44.023
Retinal Detachment with Retinal Defect	H33.001, H33.002, H33.003, H33.011, H33.012, H33.013, H33.021, H33.022, H33.023, H33.031, H33.032, H33.033, H33.041, H33.042, H33.043, H33.051, H33.052, H33.053, H33.8
Retinal Vascular Occlusion	H34.11, H34.12, H34.13, H34.231, H34.232, H34.233, H34.8110, H34.8111, H34.8112, H34.8120, H34.8121, H34.8122, H34.8130, H34.8131, H34.8132, H34.8310, H34.8311, H34.8312, H34.8320, H34.8321, H34.8322, H34.8330, H34.8331, H34.8332
Retrolental Fibroplasias	H35.171, H35.172, H35.173
Scleritis and Episcleritis	A18.51, H15.021, H15.022, H15.023, H15.031, H15.032, H15.033, H15.041, H15.042, H15.043, H15.051, H15.052, H15.053, H15.091, H15.092, H15.093
Separation of Retinal Layers	H35.711, H35.712, H35.713, H35.721, H35.722, H35.723, H35.731, H35.732, H35.733
Traumatic Cataract	H26.101, H26.102, H26.103, H26.111, H26.112, H26.113, H26.121, H26.122, H26.123, H26.131, H26.132, H26.133
Uveitis	H44.111, H44.112, H44.113, H44.131, H44.132, H44.133
Vascular Disorders of Iris and Ciliary Body	H21.1X1, H21.1X2, H21.1X3
Visual Field Defects	H53.411, H53.412, H53.413

NUMERATOR:

Cataract surgeries with best-corrected visual acuity of 20/40 or better (distance or near) achieved in the operative eye within 90 days following cataract surgery

Numerator Options:

Performance Met:

Best-corrected visual acuity of 20/40 or

better (distance or near) achieved within the 90 days following cataract surgery
(4175F)

OR

Performance Not Met:

Best-corrected visual acuity of 20/40 or better (distance or near) not achieved within the 90 days following cataract surgery, reason not otherwise specified **(4175F with 8P)**

RATIONALE:

In the United States, cataracts affect more than 24 million adults over 40 years (National Eye Institute, 2019). According to the American Academy of Ophthalmology (2016), cataract surgery has a substantial beneficial impact on visual function and on quality of life.

1. Scientific basis for measuring visual acuity outcomes after cataract surgery

The only reason to perform cataract surgery (other than for a limited set of medical indications) is to improve a patient's vision and associated functioning. The use of a 20/40 visual acuity threshold is based on several considerations. First, it is the level for unrestricted operation of a motor vehicle in the US. Second, it has been consistently used by the FDA in its assessment for approval of intraocular lens (IOL) and other vision devices. Third, it is the literature standard to denote success in cataract surgery. Fourth, work by West et al. in the Salisbury Eye Study suggests that 20/40 is a useful threshold for 50th percentile functioning for several vision-related tasks.

Most patients achieve excellent visual acuity after cataract surgery (20/40 or better). This outcome is achieved consistently through careful attention through the accurate measurement of axial length and corneal power and the appropriate selection of an IOL power calculation formula. As such, it reflects the care and diligence with which the surgery is assessed, planned and executed. Failure to achieve this after surgery in eyes without comorbid ocular conditions that would impact the success of the surgery would reflect care that should be assessed for opportunities for improvement.

The exclusion of patients with other ocular and systemic conditions known to increase the risk of an adverse outcome reflects the findings of the two published prediction rule papers for cataract surgery outcomes, by Mangione et al. (1995) and Steinberg et al. (1994). In both papers, the presence of comorbid glaucoma and macular degeneration negatively impacted the likelihood of successful outcomes of surgery. Further, as noted in the prior indicator, exclusion of eyes with ocular conditions that could impact the success of the surgery would NOT eliminate the large majority of eyes undergoing surgery while also minimizing the potential adverse selection that might otherwise occur relative to those patients with the most complex situations who might benefit the most from having surgery to maximize their remaining vision.

2. Evidence of a gap in care

Cataract surgery successfully restores vision in the majority of people who have the procedure.

Data from a study of 368,256 cataract surgeries show that corrected visual acuity (CDVA) of 0.5 (20/40) or better was achieved in 94.3% and CDVA of 1.0 (20/20) or better was achieved in 61.3% of cases (Lundstrom, Barry, Henry, Rosen & Stenevi, 2013).

Additionally, data from a UK multi-center Cataract National Dataset found a postoperative visual acuity of 6/12 (20/40) or better was achieved for 94.7% of eyes with no co-pathologies and in 79.9% of eyes with one or more co-pathologies (Jaycock et al., 2009).

A rate of 85.5-94.7% of patients achieving a 20/40 or better visual acuity in the context of approximately 3 million cataract surgeries in the US annually would mean that between 160,000 to 435,000 individuals would not achieve a 20/40 or better visual acuity which suggests an opportunity for improvement.

CLINICAL RECOMMENDATION STATEMENTS:

This is an outcome measure. As such, there is no statement in the guideline specific to this measurement topic.

COPYRIGHT:

The measure is not a clinical guideline, does not establish a standard of medical care, and has not been tested for all potential applications.

The measure, while copyrighted, can be reproduced and distributed, without modification, for noncommercial purposes, eg, use by health care providers in connection with their practices. Commercial use is defined as the sale, license, or distribution of the measure for commercial gain, or incorporation of the measure into a product or service that is sold, licensed or distributed for commercial gain.

Commercial uses of the measure require a license agreement between the user and the American Academy of Ophthalmology (Academy). Neither the Academy, PCPI, nor the American Medical Association (AMA), nor the former AMA-convened Physician Consortium for Performance Improvement(R) (AMA-PCPI), nor their members shall be responsible for any use of the Measure.

The PCPI's and AMA's significant past efforts and contributions to the development and updating of the Measures are acknowledged. The National Committee for Quality Assurance's significant past efforts and contributions to the development and updating of the Measure is acknowledged. Academy is solely responsible for the review and enhancement ("Maintenance") of the measure as of June 30, 2020.

Academy encourages use of the measure by other health care professionals, where appropriate.

THE MEASURE AND SPECIFICATIONS ARE PROVIDED "AS IS" WITHOUT WARRANTY OF ANYKIND.

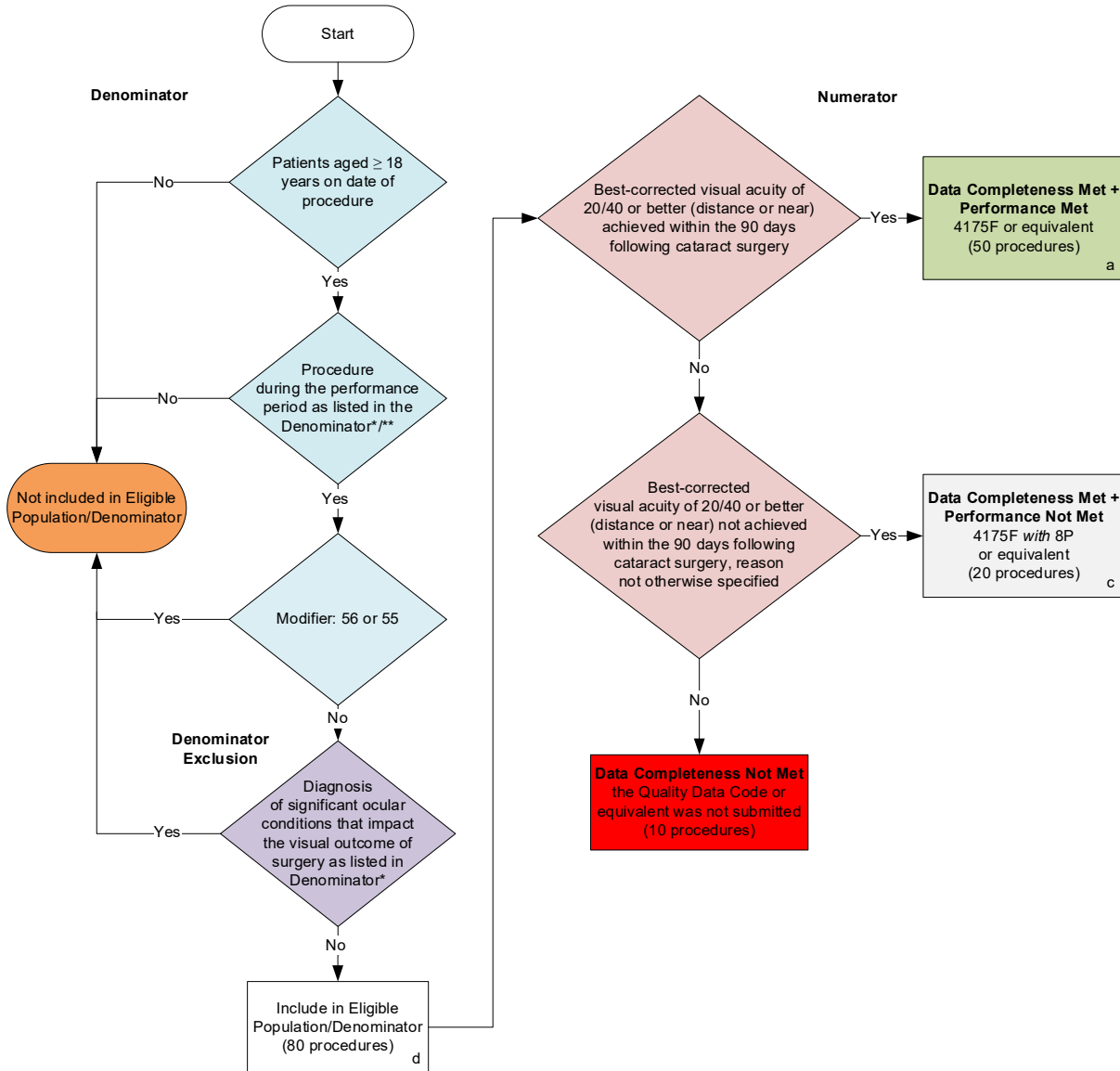
© 2006-2021 American Academy of Ophthalmology. All Rights Reserved. Applicable FARS/DFARS Restrictions Apply to Government Use.

Limited proprietary coding is contained in the measure specifications for convenience. Users of the proprietary code sets should obtain all necessary licenses from the owners of these code sets. The Academy and its members disclaim all liability for use or accuracy of any Current Procedural Terminology (CPT®) or other coding contained in the specifications.

CPT® contained in the Measures specifications is copyright 2004-2020 American Medical Association. LOINC® copyright 2004-2020 Regenstrief Institute, Inc. SNOMED CLINICAL TERMS (SNOMED CT®) copyright 2004-2020. The International Health Terminology Standards Development Organisation (IHTSDO). ICD-10 is copyright 2020 World Health Organization. All Rights Reserved.

**2021 Clinical Quality Measure Flow for Quality ID #191 (NQF 0565):
Cataracts: 20/40 or Better Visual Acuity within 90 Days Following Cataract Surgery**

Disclaimer: Refer to the measure specification for specific coding and instructions to submit this measure.



SAMPLE CALCULATIONS

Data Completeness=

$$\frac{\text{Performance Met (a=50 procedures)} + \text{Performance Not Met (c=20 procedures)}}{\text{Eligible Population / Denominator (d=80 procedures)}} = \frac{70 \text{ procedures}}{80 \text{ procedures}} = 87.50\%$$

Performance Rate=

$$\frac{\text{Performance Met (a=50 procedures)}}{\text{Data Completeness Numerator (70 procedures)}} = \frac{50 \text{ procedures}}{70 \text{ procedures}} = 71.43\%$$

*See the posted measure specification for specific coding and instructions to submit this measure.

**Include only procedures performed between 1/1/2021 and 9/30/2021 to account for the 90 day period for the numerator action to be assessed after the procedure was performed.

NOTE: Submission Frequency: Procedure

CPT only copyright 2020 American Medical Association. All rights reserved. The measure diagrams were developed by CMS as a supplemental resource to be used in conjunction with the measure specifications. They should not be used alone or as a substitution for the measure specification.

v5

**2021 Clinical Quality Measure Flow Narrative for Quality ID #191 (NQF 0565):
Cataracts: 20/40 or Better Visual Acuity within 90 Days Following Cataract Surgery**

Disclaimer: Refer to the measure specification for specific coding and instructions to submit this measure.

1. Start with Denominator
2. Check *Patient aged greater than or equal to 18 years on date of procedure*:
 - a. If *Patient aged greater than or equal to 18 years on date of procedure* equals No, do not include in *Eligible Population/Denominator*. Stop processing.
 - b. If *Patient aged greater than or equal to 18 years on date of procedure* equals Yes during the measurement period, proceed to check *Procedure during the performance period as listed in the Denominator*/***.
3. Check *Procedure during the performance period as listed in the Denominator*/***:
 - a. If *Procedure during the performance period as listed in the Denominator*/*** equals No, do not include in *Eligible Population/Denominator*. Stop processing.
 - b. If *Procedure during the performance period as listed in the Denominator*/*** equals Yes, proceed to check *Modifier*.
4. Check *Modifier*:
 - a. If *Modifier* equals Yes, do not include in *Eligible Population/Denominator*. Stop processing.
 - b. If *Modifier* equals No, proceed to check *Diagnosis of significant ocular conditions that impact the visual outcome of surgery as listed in Denominator**.
5. Check *Diagnosis of significant ocular conditions that impact the visual outcome of surgery as listed in Denominator**:
 - a. If *Diagnosis of significant ocular conditions that impact the visual outcome of surgery as listed in Denominator** equals Yes, do not include in *Eligible Population/Denominator*. Stop processing.
 - b. If *Diagnosis of significant ocular conditions that impact the visual outcome of surgery as listed in Denominator** equals No, include in *Eligible Population/Denominator*.
6. Denominator Population:
 - a. Denominator Population is all Eligible Procedures in the Denominator. The Denominator is represented as Denominator in the Sample Calculation listed at the end of this document. Letter d equals 80 procedures in the Sample Calculation.
7. Start Numerator
8. Check *Best-corrected visual acuity of 20/40 or better (distance or near) achieved within the 90 days following cataract surgery*:
 - a. If *Best-corrected visual acuity of 20/40 or better (distance or near) achieved within the 90 days following cataract surgery* equals Yes, include in Data Completeness Met and Performance Met.

- *Data Completeness Met and Performance Met* letter is represented in the Data Completeness and Performance Rate in the Sample Calculation listed at the end of this document. Letter a equals 50 procedures in the Sample Calculation.
- b. If *Best-corrected visual acuity of 20/40 or better (distance or near) achieved within the 90 days following cataract surgery* equals No, proceed to check *Best-corrected visual acuity of 20/40 or better (distance or near) not achieved within the 90 days following cataract surgery, reason not otherwise specified*.
9. Check *Best-corrected visual acuity of 20/40 or better (distance or near) not achieved within the 90 days following cataract surgery, reason not otherwise specified*:
 - a. If *Best-corrected visual acuity of 20/40 or better (distance or near) not achieved within the 90 days following cataract surgery, reason not otherwise specified* equals Yes, include in *Data Completeness Met and Performance Not Met*.
 - *Data Completeness Met and Performance Not Met* letter is represented in the Data Completeness in the Sample Calculation listed at the end of this document. Letter c equals 20 procedures in the Sample Calculation.
 - b. If *Best-corrected visual acuity of 20/40 or better (distance or near) not achieved within the 90 days following cataract surgery, reason not otherwise specified* equals No, proceed to check *Data Completeness Not Met*.
 10. Check *Data Completeness Not Met*:
 - a. If *Data Completeness Not Met*, the Quality Data Code or equivalent was not submitted. 10 procedures have been subtracted from the Data Completeness Numerator in the Sample Calculation.

Samples Calculations

Data Completeness equals Performance Met (a equals 50 procedures) plus Performance Not Met (c equals 20 procedures) divided by Eligible Population/Denominator (d equals 80 procedures). All equals 70 procedures divided by 80 procedures. All equals 87.50 percent.

Performance Rate equals Performance Met (a equals 50 procedures) divided by Data Completeness Numerator (70 procedures). All equals 50 procedures divided by 70 procedures. All equals 71.43 percent.

*See the posted measure specification for specific coding and instructions to submit this measure.

**Include only procedures performed between 1/1/2021 and 9/30/2021 to account for the 90 day period for the numerator action to be assessed after the procedure was performed.

NOTE: Submission Frequency: Procedure

The measure diagrams were developed by CMS as a supplemental resource to be used in conjunction with the measure specifications. They should not be used alone or as a substitution for the measure specification.