

Quality ID #383 (NQF 1879) : Adherence to Antipsychotic Medications For Individuals with Schizophrenia
– National Quality Strategy Domain: Patient Safety
– Meaningful Measure Area: Prevention, Treatment, and Management of Mental Health

2021 COLLECTION TYPE:

MIPS CLINICAL QUALITY MEASURES (CQMS)

MEASURE TYPE:

Intermediate Outcome – High Priority

DESCRIPTION:

Percentage of individuals at least 18 years of age as of the beginning of the performance period with schizophrenia or schizoaffective disorder who had at least two prescriptions filled for any antipsychotic medication and who had a Proportion of Days Covered (PDC) of at least 0.8 for antipsychotic medications during the performance period

INSTRUCTIONS:

This measure is to be submitted a minimum of **once per performance period** for all patients with a diagnosis of schizophrenia or schizoaffective disorder who are seen during the performance period. This measure may be submitted by Merit-based Incentive Payment System (MIPS) eligible clinicians who perform the quality actions described in the measure for the primary management of patients with schizophrenia or schizoaffective disorder based on the services provided and the measure-specific denominator coding.

NOTE: Patient encounters for this measure conducted via telehealth (e.g., encounters coded with GQ, GT, 95, or POS 02 modifiers) are allowable.

Measure Submission Type:

Measure data may be submitted by individual MIPS eligible clinicians, groups, or third party intermediaries. The listed denominator criteria are used to identify the intended patient population. The numerator options included in this specification are used to submit the quality actions as allowed by the measure. The quality-data codes listed do not need to be submitted by MIPS eligible clinicians, groups, or third party intermediaries that utilize this modality for submissions; however, these codes may be submitted for those third party intermediaries that utilize Medicare Part B claims data. For more information regarding Application Programming Interface (API), please refer to the Quality Payment Program (QPP) website.

DENOMINATOR:

Individuals at least 18 years of age as of the beginning of the performance period with schizophrenia or schizoaffective disorder and at least two prescriptions filled for antipsychotic medications during the performance period

DENOMINATOR NOTE: *Signifies that this CPT Category I code is a non-covered service under the Medicare Part B Physician Fee Schedule (PFS). These non-covered services should be counted in the denominator population for MIPS CQMs.

The following are the oral antipsychotic medications by class for the denominator. The route of administration includes all oral formulations of the medications listed below.

TYPICAL ANTIPSYCHOTIC MEDICATIONS:

- chlorpromazine
- fluphenazine
- haloperidol
- loxapine
- molindone
- perphenazine
- prochlorperazine

- thioridazine
- thiothixene
- trifluoperazine

ATYPICAL ANTIPSYCHOTIC MEDICATIONS:

- aripiprazole
- asenapine
- brexpiprazole
- cariprazine
- clozapine
- olanzapine
- iloperidone
- lurasidone
- paliperidone
- quetiapine
- quetiapine fumarate (Seroquel)
- risperidone
- ziprasidone

ANTIPSYCHOTIC COMBINATIONS:

- perphenazine-amitriptyline

LONG-ACTING INJECTABLE ANTIPSYCHOTIC MEDICATIONS:

NOTE: The following are the long-acting (depot) injectable antipsychotic medications by class for the denominator. The route of administration includes all injectable and intramuscular formulations of the medications listed below.

TYPICAL ANTIPSYCHOTIC MEDICATIONS:

- fluphenazine decanoate (J2680)
- haloperidol decanoate (J1631)

ATYPICAL ANTIPSYCHOTIC MEDICATIONS:

- aripiprazole (J0401)
- aripiprazole lauroxil (Aristada) (J1942)
- olanzapine pamoate (J2358)
- paliperidone palmitate (J2426)
- risperidone microspheres (J2794)

NOTE: Since the days' supply variable is not reliable for long-acting injections in administrative data, the days' supply is imputed as listed below for the long-acting (depot) injectable antipsychotic medications billed under Part D and Part B:

- aripiprazole (J0401) – 28 days' supply
- aripiprazole lauroxil (Aristada) (J1942) – 28 days' supply
- fluphenazine decanoate (J2680) – 28 days' supply
- haloperidol decanoate (J1631) – 28 days' supply
- olanzapine pamoate (J2358) – 28 days' supply
- paliperidone palmitate (J2426) – 28 days' supply
- risperidone microspheres (J2794) – 14 days' supply

Denominator Criteria (Eligible Cases):

Patients aged ≥ 18 years at the beginning of the performance period

AND

Diagnosis for schizophrenia or schizoaffective disorder(ICD-10-CM): F20.0, F20.1, F20.2, F20.3, F20.5, F20.81,

F20.89, F20.9, F25.0, F25.1, F25.8, F25.9

AND

At least two encounters with a diagnosis of schizophrenia or schizoaffective disorder (see code set below) with different dates of service in an outpatient setting, emergency department setting, or non-acute inpatient setting during the performance period**

OR

At least one encounter with a diagnosis of schizophrenia or schizoaffective disorder (see code set below) in an acute inpatient setting during the performance period**

AND

****Patient encounter during the performance period determination Outpatient Setting Option 1 (CPT or HCPCS):**

98960, 98961, 98962, 99078, 99202, 99203, 99204, 99205, 99211, 99212, 99213, 99214, 99215, 99217, 99218, 99219, 99220, 99241*, 99242*, 99243*, 99244*, 99245*, 99281, 99282, 99283, 99284, 99285*, 99304, 99305, 99306, 99307, 99308, 99309, 99310, 99315, 99316, 99318, 99324, 99325, 99326, 99327, 99328, 99334, 99335, 99336, 99337, 99341, 99342, 99343, 99344, 99345, 99347, 99348, 99349, 99350, 99385*, 99386*, 99387*, 99395*, 99396*, 99397*, 99401*, 99402*, 99403*, 99404*, 99411*, 99412*, 99429*, 99510, G0155*, G0176*, G0177*, G0409, G0410*, G0411*, G0463*, H0002*, H0004*, H0031*, H0034*, H0035*, H0036*, H0037*, H0039*, H0040*, H2000*, H2001*, H2010*, H2011*, H2012*, H2013*, H2014*, H2015*, H2016*, H2017*, H2018*, H2019*, H2020*, M0064, S0201*, S9480*, S9484*, S9485*, T1015*

OR

Outpatient Setting Option 2 (CPT): 90791, 90792, 90832, 90834, 90837, 90839, 90845, 90847, 90849, 90853, 90867, 90868, 90869, 90870, 90875*, 90876*, 90880, 99221, 99222, 99223, 99231, 99232, 99233, 99238, 99239, 99251*, 99252*, 99253*, 99254*, 99255*, 99291

WITH

Place of Service (POS): 03, 05, 07, 09, 11, 12, 13, 14, 15, 20, 22, 24, 33, 49, 50, 52, 53, 71, 72

OR

Emergency Department Setting Option 1 (CPT): 99281, 99282, 99283, 99284, 99285*

OR

Emergency Department Setting Option 2 (CPT): 90791, 90792, 90832, 90834, 90837, 90839, 90845, 90847, 90849, 90853, 90867, 90868, 90869, 90870, 90875*, 90876*, 99291

WITH

Place of Service (POS): 23

OR

Non-Acute Inpatient Setting Option 1 (CPT): 99304, 99305, 99306, 99307, 99308, 99309, 99310, 99315, 99316, 99318, 99324, 99325, 99326, 99327, 99328, 99334, 99335, 99336, 99337

Non-Acute Inpatient Setting Option 1 (HCPCS): H0017, H0018, H0019, T2048

OR

Non-Acute Inpatient Setting Option 2 (CPT): 90791, 90792, 90832, 90834, 90837, 90839, 90845, 90847, 90849, 90853, 90867, 90868, 90869, 90870, 90875*, 90876*, 99291

WITH

Place of Service (POS): 31, 32, 56

OR

Acute Inpatient Setting (CPT): 90791, 90792, 90832, 90834, 90837, 90839, 90845, 90847, 90849, 90853, 90867, 90868, 90869, 90870, 90875*, 90876*, 99221, 99222, 99223, 99231, 99232, 99233, 99238, 99239, 99251*, 99252*, 99253*, 99254*, 99255*, 99291

WITH

Place of Service (POS): 21, 51

AND NOT

DENOMINATOR EXCLUSION:

Diagnosis for dementia (ICD-10-CM): E75.00, E75.01, E75.02, E75.09, E75.10, E75.11, E75.19, E75.4, F01.50, F01.51, F02.80, F02.81, F03.90, F03.91, F05, F10.27, F11.122, F13.27, F13.97, F18.17, F18.27, F18.97, F19.17, F19.27, F19.97, G30.0, G30.1, G30.8, G30.9, G31.09, G31.83

NUMERATOR:

Individuals in the denominator who have a Proportion of Days Covered (PDC) of at least 0.8 for antipsychotic medications

NUMERATOR NOTE: *The PDC is calculated as follows:*

PDC NUMERATOR:

The PDC numerator is the sum of the days covered by the days' supply of all antipsychotic prescriptions. The period covered by the PDC starts on the day within the performance period when the first prescription is filled (i.e., the index date) and lasts through the end of the performance period, or death, whichever comes first. For prescriptions with a days' supply that extends beyond the end of the performance period, count only the days for which the drug was available to the individual during the performance period. If there are prescriptions for the same drug (generic name) on the same date of service, keep the prescription with the largest days' supply. If prescriptions for the same drug (generic name) overlap, then adjust the prescription start date to be the day after the previous fill has ended.

PDC DENOMINATOR:

The PDC denominator is the number of days from the first prescription date through the end of the performance period, or death date, whichever comes first.

Numerator Options:

Performance Met:

Individual had a PDC of 0.8 or greater **(G9512)**

OR

Performance Not Met:

Individual did not have a PDC of 0.8 or greater **(G9513)**

RATIONALE:

A large body of evidence has shown that antipsychotic medications are effective in treating acute psychotic exacerbations of schizophrenia and in reducing the likelihood of relapse. Guidelines from the National Institute for Clinical Excellence (NICE) and American Psychiatric Association (APA) emphasize the importance of treatment adherence and uninterrupted antipsychotic regimens to prevent symptoms and relapse (National Collaborating Centre for Mental Health 2014; Lehman et al. 2004). This measure will describe the degree of compliance or non-compliance with these recommendations. By providing information on the percentage of schizophrenic individuals with appropriate long-term use of antipsychotic medications, this measure has the potential to improve management of schizophrenia.

This measure addresses a Health People 2020 goal to increase the proportion of adults with serious mental illness who receive treatment (ODPHP, 2018).

Although the prevalence of schizophrenia in the adult American population is less than 1% (Kessler et al. 2005), this population has a higher risk of premature mortality than the general population. The estimated average potential life lost is 28.5 years for individuals with schizophrenia compared to the general population (Olson et al. 2015). The overall U.S. cost of schizophrenia has been estimated at \$155.7 billion annually with direct health care costs of \$37.7 billion (Cloutier et al., 2016). Antipsychotic medications have proven to be effective in treating this disease, and this measure will help to capture the extent of utilization of this treatment.

REFERENCES:

Cloutier M, Aigbogun MS, Guerin A, Nitulescu R, Ramanakumar AV, Kamat SA, DeLucia M, Duffy R, Legacy SN, Henderson C, Francois C, and Wu E. The economic burden of schizophrenia in the United States in 2013. *The Journal of Clinical Psychiatry*. 2016; 77(6): 764-71.

Kessler RC, Birmbaum H, Demler O, Falloon IRH, Gagnon E, Guyer M, Howes MJ, Kendler KS, Shi L, Walters E, and Wu EQ. The prevalence and correlates of non-affective psychosis in the National Comorbidity Survey Replication (NCS-R). *Biol Psychiatry*. 2005; 58(8): 668-76.

Lehman AF, Lieberman JA., Dixon LB, McGlashan TH, Miller AL, Perkins DO, and Kreyenbuhl J. (2004). Practice guidelines for the treatment of patients with schizophrenia. *American Psychiatric Association*. Retrieved from https://psychiatryonline.org/pb/assets/raw/sitewide/practice_guidelines/guidelines/schizophrenia.pdf

The National Institute for Clinical Excellence and the National Collaborating Centre for Mental health. Psychosis and schizophrenia in adults: prevention and management. 2014; National Clinical Guideline Number 178: 301-379. Retrieved from <https://www.nice.org.uk/guidance/cg178/evidence/full-guideline-pdf-490503565>

Office of Disease Prevention and Health Promotion (ODPHP). Health People 2020: Mental Health and Mental Disorders.2018; Health People 2020. Retrieved from <https://www.healthypeople.gov/2020/topics-objectives/topic/mental-health-and-mental-disorders/objectives>.

Olfson M, Gerhard T, Huang C, Crystal S, and Stroup TS. Premature mortality among adults with schizophrenia in the United States. *JAMA Psychiatry*. 2015; 72(12): 1172-81.

CLINICAL RECOMMENDATION STATEMENTS:

The 2014 NICE Guideline on Treatment and Management of Psychosis and Schizophrenia in Adults recommends that “for people with an acute exacerbation or recurrence of psychosis or schizophrenia, offer oral antipsychotic medication in conjunction with psychological interventions (family intervention and individual [cognitive behavioral therapy])”. The guideline also recommends to “consider offering depot /long-acting injectable antipsychotic medication to people with psychosis or schizophrenia who would prefer such treatment after an acute episode [or] where avoiding covert non-adherence (either intentional or unintentional) to antipsychotic medication is a clinical priority within the treatment plan” (National Collaborating Centre for Mental Health 2014).

These recommendations are found on pages 381 and 382 of the 2014 NICE Guideline under the Clinical Practice Recommendations, Treatment of Acute Episode and Promoting Recovery sections, respectively.

References:

The National Institute for Clinical Excellence and the National Collaborating Centre for Mental health. Psychosis and schizophrenia in adults: prevention and management. 2014; National Clinical Guideline Number 178: 301-379. Retrieved from <https://www.nice.org.uk/guidance/cg178/evidence/full-guideline-pdf-490503565>

COPYRIGHT:

This measure was developed by Health Services Advisory Group (HSAG) with the Centers for Medicare & Medicaid Services. This measure is currently maintained by the Electronic Clinical Quality Measures (eCQM) Development and Maintenance for Eligible Clinicians contract (75FCMC18D0032/75FCMC19F0004) with CMS. This measure is in the public domain.

Limited proprietary coding is contained in the measure specifications for convenience. Users of the proprietary code sets should obtain all necessary licenses from the owners of these code sets. Health Services Advisory Group and the National Committee for Quality Assurance disclaims all liability for use or accuracy of any Current Procedural Terminology (CPT [R]) or other coding contained in the specifications. CPT® contained in the measure’s specifications is copyright 2004-2020 American Medical Association. All Rights Reserved.

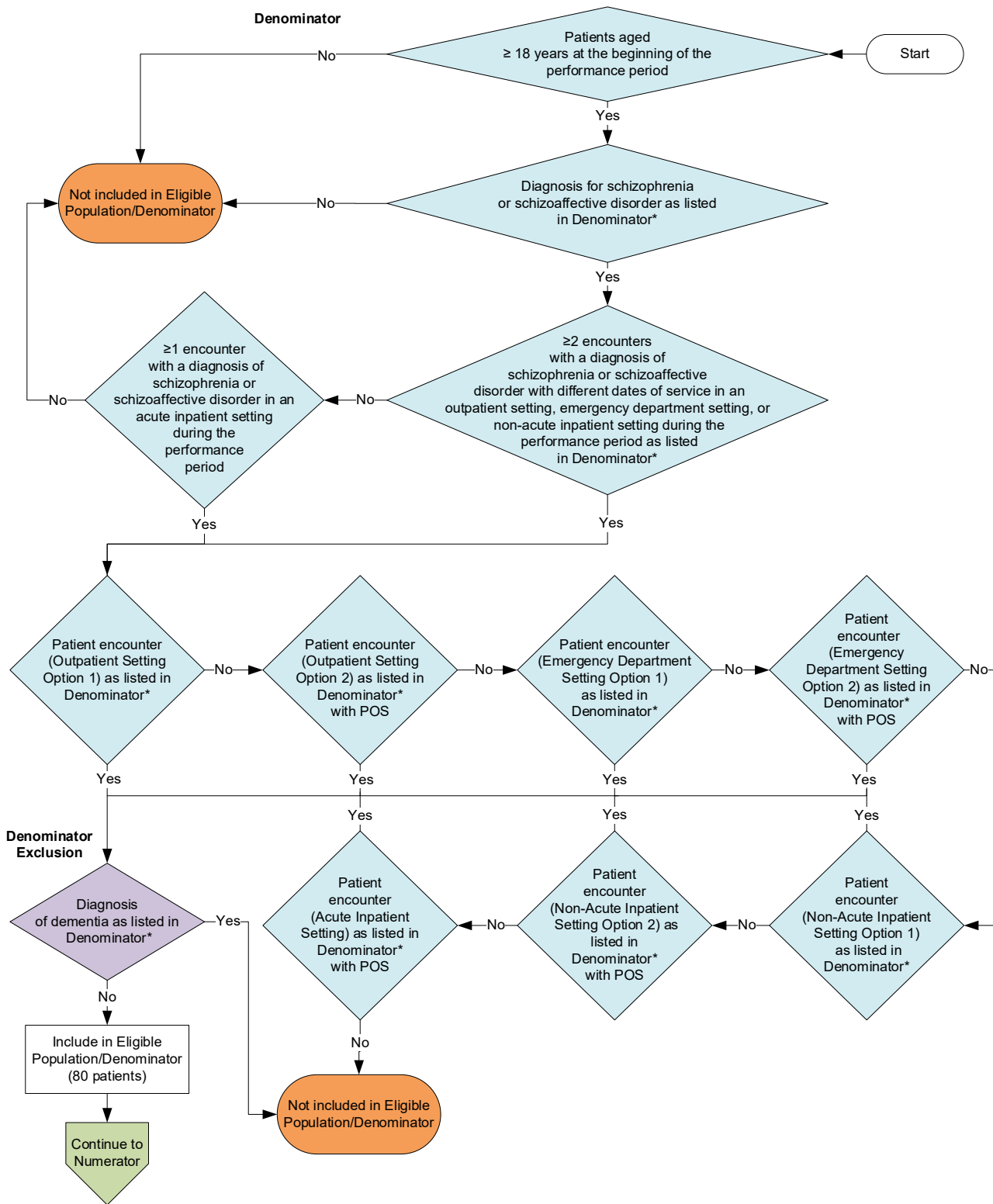
This performance measure is not clinical a guideline, does not establish a standard of medical care, and has not been tested for all potential applications.

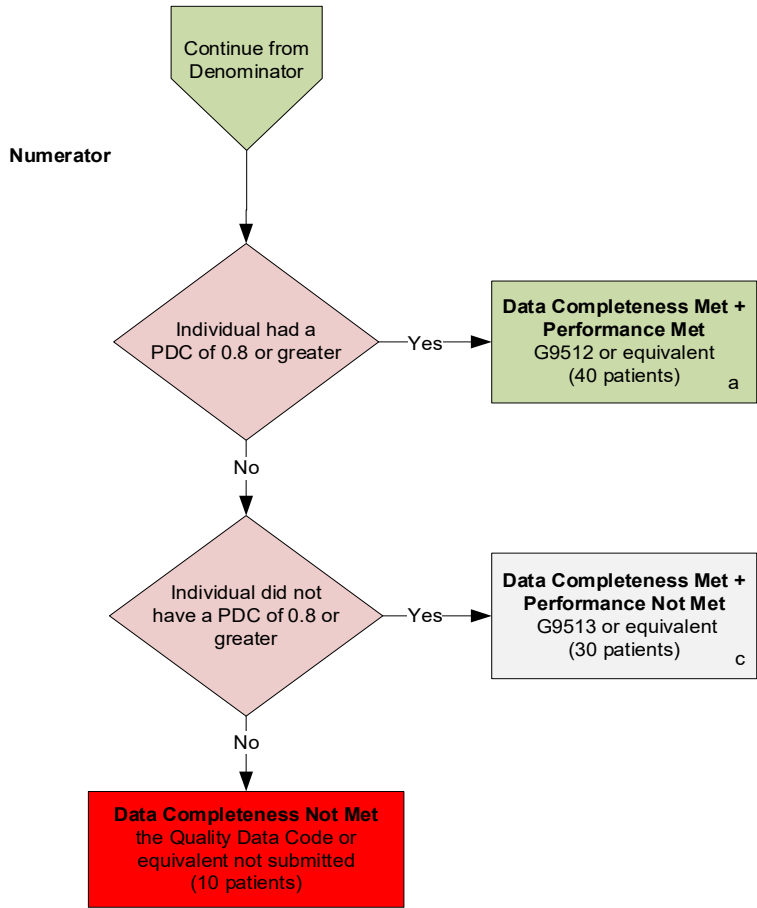
ICD-10 copyright 2020 World Health Organization. All Rights Reserved.

THE MEASURES AND SPECIFICATIONS ARE PROVIDED “AS IS” WITHOUT WARRANTY OF ANY KIND.

**2021 Clinical Quality Measure Flow for Quality ID #383:
Adherence to Antipsychotic Medications for Individuals with Schizophrenia**

Disclaimer: Refer to the measure specification for specific coding and instructions to submit this measure.





SAMPLE CALCULATIONS

Data Completeness=

$$\frac{\text{Performance Met (a=40 patients) + Performance Not Met (c=30 patients)}}{\text{Eligible Population / Denominator (d=80 patients)}} = \frac{70 \text{ patients}}{80 \text{ patients}} = 87.50\%$$

Performance Rate=

$$\frac{\text{Performance Met (a=40 patients)}}{\text{Data Completeness Numerator (70 patients)}} = \frac{40 \text{ patients}}{70 \text{ patients}} = 57.14\%$$

*See the posted measure specification for specific coding and instructions to submit this measure.
 NOTE: Submission Frequency: Patient-Process

CPT only copyright 2020 American Medical Association. All rights reserved.
 The measure diagrams were developed by CMS as a supplemental resource to be used in conjunction with the measure specifications. They should not be used alone or as a substitution for the measure specification.

**2021 Clinical Quality Measure Flow Narrative for Quality ID #383:
Adherence to Antipsychotic Medications for Individuals with Schizophrenia**

Disclaimer: Refer to the measure specification for specific coding and instructions to submit this measure.

1. Start with Denominator
2. Check *Patient aged 18 or older at the beginning of the performance period*:
 - a. If *Patient aged greater than or equal to 18 years at the beginning of the performance period* equals No, do not include in *Eligible Population/Denominator*. Stop processing.
 - b. If *Patient aged greater than or equal to 18 at the beginning of the performance period* equals Yes, proceed to check *Diagnosis for schizophrenia or schizoaffective as listed in Denominator**.
3. Check *Diagnosis for schizophrenia or schizoaffective disorder as listed in Denominator**:
 - a. If *Diagnosis for schizophrenia or schizoaffective disorder as listed in Denominator** equals No, do not include in *Eligible Population/Denominator*. Stop processing.
 - b. If *Diagnosis for schizophrenia or schizoaffective disorder as listed in Denominator** equals Yes, proceed to check *At least two encounters with a diagnosis of schizophrenia or schizoaffective disorder with different dates of service in an outpatient setting, emergency department setting, or non-acute inpatient setting during the performance period as listed in Denominator**.
4. Check *At least two encounters with a diagnosis of schizophrenia or schizoaffective disorder with different dates of service in an outpatient setting, emergency department setting, or non-acute inpatient setting during the performance period as listed in Denominator**:
 - a. If *At least two encounters with a diagnosis of schizophrenia or schizoaffective disorder with different dates of service in an outpatient setting, emergency department setting, or non-acute inpatient setting during the performance period as listed in Denominator** equals No, proceed to check *At least one encounter with a diagnosis of schizophrenia or schizoaffective disorder in an acute inpatient setting during the performance period*.
 - b. If *At least two encounters with a diagnosis of schizophrenia or schizoaffective disorder with different dates of service in an outpatient setting, emergency department setting, or non-acute inpatient setting during the performance period as listed in Denominator** equals Yes, proceed to check *Patient encounter (Outpatient Setting Option 1) as listed in Denominator**.
5. Check *At least one encounter with a diagnosis of schizophrenia or schizoaffective disorder in an acute inpatient setting during the performance period*:
 - a. If *At least one encounter with a diagnosis of schizophrenia or schizoaffective disorder in an acute inpatient setting during the performance period* equals No, do not include in *Eligible Population/Denominator*. Stop processing.
 - b. If *At least one encounter with a diagnosis of schizophrenia or schizoaffective disorder in an acute inpatient setting during the performance period* equals Yes, proceed to check *Patient encounter (Outpatient Setting Option 1) as listed in Denominator**.
6. Check *Patient encounter (Outpatient Setting Option 1) as listed in Denominator**:
 - a. If *Patient encounter (Outpatient Setting Option 1) as listed in Denominator** equals No, proceed to check *Patient encounter (Outpatient Setting Option 2) as listed in Denominator* with POS*.

- b. If *Patient encounter (Outpatient Setting Option 1)* as listed in *Denominator** equals Yes, proceed to check *Diagnosis of dementia* as listed in *Denominator**.
7. Check *Patient encounter (Outpatient Setting Option 2)* as listed in *Denominator** with POS:
 - a. If *Patient encounter (Outpatient Setting Option 2)* as listed in *Denominator** with POS equals No, proceed to check *Patient encounter (Emergency Department Setting Option 1)* as listed in *Denominator**.
 - b. If *Patient encounter (Outpatient Setting Option 2)* as listed in *Denominator** with POS equals Yes, proceed to check *Diagnosis of dementia* as listed in *Denominator**.
 8. Check *Patient encounter (Emergency Department Setting Option 1)* as listed in *Denominator**:
 - a. If *Patient encounter (Emergency Department Setting Option 1)* as listed in *Denominator** equals No, proceed to check *Patient encounter (Emergency Department Setting Option 2)* as listed in *Denominator** with POS.
 - b. If *Patient encounter (Emergency Department Setting Option 1)* as listed in *Denominator** equals Yes, proceed to check *Diagnosis of dementia* as listed in *Denominator**.
 9. Check *Patient encounter (Emergency Department Setting Option 2)* as listed in *Denominator** with POS:
 - a. If *Patient encounter (Emergency Department Setting Option 2)* as listed in *Denominator** with POS equals No, proceed to check *Patient encounter (Non-Acute Inpatient Setting Option 1)* as listed in *Denominator**.
 - b. If *Patient encounter (Emergency Department Setting Option 2)* as listed in *Denominator** with POS equals Yes, proceed to check *Diagnosis of dementia* as listed in *Denominator**.
 10. Check *Patient encounter (Non-Acute Inpatient Setting Option 1)* as listed in *Denominator**:
 - a. If *Patient encounter (Non-Acute Inpatient Setting Option 1)* as listed in *Denominator** equals No, proceed to check *Patient encounter (Non-Acute Inpatient Setting Option 2)* as listed in *Denominator** with POS.
 - b. If *Patient encounter (Non-Acute Inpatient Setting Option 1)* as listed in *Denominator** equals Yes, proceed to check *Diagnosis of dementia* as listed in *Denominator**.
 11. Check *Patient encounter (Non-Acute Inpatient Setting Option 2)* as listed in *Denominator** with POS:
 - a. If *Patient encounter (Non-Acute Inpatient Setting Option 2)* as listed in *Denominator** with POS equals No, proceed to check *Patient encounter (Acute Inpatient Setting)* as listed in *Denominator** with POS.
 - b. If *Patient encounter (Non-Acute Inpatient Setting Option 2)* as listed in *Denominator** with POS equals Yes, proceed to check *Diagnosis of dementia* as listed in *Denominator**.
 12. Check *Patient encounter (Acute Inpatient Setting)* as listed in *Denominator** with POS:
 - a. If *Patient encounter (Acute Inpatient Setting)* as listed in *Denominator** with POS equals No, do not include in *Eligible Population/Denominator*. Stop processing.
 - b. If *Patient encounter (Acute Inpatient Setting)* as listed in *Denominator** with POS equals Yes, proceed to check *Diagnosis of dementia* as listed in *Denominator**.
 13. Check *Diagnosis of dementia* as listed in *Denominator**:
 - a. If *Diagnosis of dementia* as listed in *Denominator** equals Yes, do not include in *Eligible Population/Denominator*. Stop processing.
 - b. If *Diagnosis of dementia* as listed in *Denominator** equals No, include in *Eligible Population/Denominator*.

14. Denominator Population:

- a. Denominator Population is All Eligible Patients in the Denominator. Denominator is represented as Denominator in the Sample Calculation listed at the end of this document. Letter d equals 80 patients in the Sample Calculation.

15. Start Numerator

16. Check *Individual had a PDC of 0.8 or greater*:

- a. If *Individual had a PDC of 0.8 or greater* equals Yes, include in *Data Completeness Met and Performance Met*.
 - *Data Completeness Met and Performance Met* letter is represented in the Data Completeness and Performance Rate in the Sample Calculation listed at the end of this document. Letter a equals 40 patients in Sample Calculation.
- b. If *Individual had a PDC of 0.8 or greater* equals No, proceed to check *Individual did not have a PDC of 0.8 or greater*.

17. Check *Individual did not have a PDC of 0.8 or greater*:

- a. If *Individual did not have a PDC of 0.8 or greater* equals Yes, include in *Data Completeness Met and Performance Not Met*.
 - *Data Completeness Met and Performance Not Met* letter is represented in the Data Completeness in the Sample Calculation listed at the end of this document. Letter c equals 30 patients in the Sample Calculation.
- b. If *Individual did not have a PDC of 0.8 or greater* equals No, proceed to check *Data Completeness Not Met*.

18. Check *Data Completeness Not Met*:

- a. If *Data Completeness Not Met*, the Quality Data Code or equivalent was not submitted. 10 patients have been subtracted from the Data Completeness Numerator in Sample Calculation.

Sample Calculations:

Data Completeness equals Performance Met (a equals 40 patients) plus Performance Not Met (c equals 30 patients) divided by Eligible Population/Denominator (d equals 80 patients). All equals 70 patients divided by 80 patients. All equals 87.50 percent.

Performance Rate equals Performance Met (a equals 40 patients) divided by Data Completeness Numerator (70 patients). All equals 40 patients divided by 70 patients. All equals 57.14 percent.

*See the posted measure specification for specific coding and instructions to submit this measure.

NOTE: Submission Frequency: Patient-Process

The measure diagrams were developed by CMS as a supplemental resource to be used in conjunction with the measure specifications. They should not be used alone or as a substitution for the measure specification.