

Quality ID #431 (NQF 2152): Preventive Care and Screening: Unhealthy Alcohol Use: Screening & Brief Counseling

– National Quality Strategy Domain: Community/Population Health

– Meaningful Measure Area: Prevention and Treatment of Opioid and Substance Use Disorders

2021 COLLECTION TYPE:

MIPS CLINICAL QUALITY MEASURES (CQMS)

MEASURE TYPE:

Process

DESCRIPTION:

Percentage of patients aged 18 years and older who were screened for unhealthy alcohol use using a systematic screening method at least once within the last 12 months AND who received brief counseling if identified as an unhealthy alcohol user

INSTRUCTIONS:

This measure is to be submitted **once per performance period** for patients seen during the performance period. This measure is intended to reflect the quality of services provided for preventive screening for unhealthy alcohol use. There is no diagnosis associated with this measure. This measure may be submitted by Merit-based Incentive Payment System (MIPS) eligible clinicians who perform the quality actions described in the measure based on the services provided and the measure-specific denominator coding. For the purposes of the measure, the most recent denominator eligible encounter should be used to determine if the numerator action for the submission criteria was performed within the 12-month look back period.

This measure will be calculated with 3 performance rates:

- 1) Percentage of patients aged 18 years and older who were screened for unhealthy alcohol use using a systematic screening method at least once within the last 12 months
- 2) Percentage of patients aged 18 years and older who were identified as unhealthy alcohol users who received brief counseling
- 3) Percentage of patients aged 18 years and older who were screened for unhealthy alcohol use using a systematic screening method at least once within the last 12 months AND who received brief counseling if identified as unhealthy alcohol users

The denominator of submission criteria 2 is a subset of the resulting numerator for submission criteria 1, as submission criteria 2 is limited to assessing if patients identified as unhealthy alcohol users received brief counseling. For all patients, submission criteria 1 and 3 are applicable, but submission criteria 2 will only be applicable for those patients who are identified as unhealthy alcohol users. Therefore, data for every patient that meets the age and encounter requirements will only be submitted for submission criteria 1 and 3, whereas data submitted for submission criteria 2 will be for a subset of patients who meet the age and encounter requirements, as the denominator has been further limited to those who were identified as unhealthy alcohol users.

NOTE: Patient encounters for this measure conducted via telehealth (e.g., encounters coded with GQ, GT, 95, or POS 02 modifiers) are allowable.

Measure Submission Type:

Measure data may be submitted by individual MIPS eligible clinicians, groups, or third party intermediaries. The listed denominator criteria are used to identify the intended patient population. The numerator options included in this specification are used to submit the quality actions as allowed by the measure. The quality-data codes listed do not need to be submitted by MIPS eligible clinicians, groups, or third party intermediaries that utilize this modality for submissions; however, these codes may be submitted for those third party intermediaries that utilize Medicare Part B claims data. For more information regarding Application Programming Interface (API), please refer to the Quality

Payment Program (QPP) website.

THERE ARE THREE SUBMISSION CRITERIA FOR THIS MEASURE:

- 1) All patients who were screened for unhealthy alcohol use using a systematic screening method

AND

- 2) All patients who were identified as unhealthy alcohol users who received brief counseling

AND

- 3) All patients who were screened for unhealthy alcohol use using a systematic screening method and, if identified as unhealthy alcohol users received brief counseling, or were not identified as unhealthy alcohol users

This measure contains three submission criteria which aim to identify patients who were screened for unhealthy alcohol use using a systematic screening method (submission criteria 1), patients who were identified as unhealthy alcohol users and who received brief counseling (submission criteria 2), and a comprehensive look at the overall performance on unhealthy alcohol use screening and brief counseling (submission criteria 3). By separating this measure into various submission criteria, the MIPS eligible professional or MIPS eligible clinician will be able to better ascertain where gaps in performance exist, and identify opportunities for improvement. The overall rate (submission criteria 3) should be utilized to compare performance to published versions of this measure prior to the 2021 performance year, when the measure had a single performance rate. For accountability reporting in the CMS MIPS program, the rate for submission criteria 2 is used for performance.

SUBMISSION CRITERIA 1: ALL PATIENTS WHO WERE SCREENED FOR UNHEALTHY ALCOHOL USE

DENOMINATOR (SUBMISSION CRITERIA 1):

All patients aged 18 years and older seen for at least two visits or at least one preventive visit during the measurement period

DENOMINATOR NOTE: *Signifies that this CPT Category I code is a non-covered service under the Medicare Part B Physician Fee Schedule (PFS). These non-covered services should be counted in the denominator population for MIPS CQMs.

Denominator Criteria (Eligible Cases):

Patients aged \geq 18 years

AND

At least two patient encounters during the performance period (CPT or HCPCS): 90791, 90792, 90832, 90834, 90837, 90845, 96156, 96158, 97165, 97166, 97167, 97168, 97802, 97803, 97804, 99202, 99203, 99204, 99205, 99212, 99213, 99214, 99215, G0270, G0271

OR

At least one preventive encounter during the performance period (CPT or HCPCS): 99385*, 99386*, 99387*, 99395*, 99396*, 99397*, 99401*, 99402*, 99403*, 99404*, 99411*, 99412*, 99429*, G0438, G0439

NUMERATOR (SUBMISSION CRITERIA 1):

Patients who were screened for unhealthy alcohol use using a systematic screening method at least once within the last 12 months

Definitions:

Systematic screening method – For purposes of this measure, one of the following systematic methods to assess unhealthy alcohol use must be utilized. "Systematic screening methods" and thresholds for defining unhealthy alcohol use include:

- AUDIT Screening Instrument (score \geq 4)

- AUDIT-C Screening Instrument (score ≥ 4 for men; score ≥ 3 for women)
- Single Question Screening - How many times in the past year have you had 5 (for men) or 4 (for women and all adults older than 65 years) or more drinks in a day? (response ≥ 1)

NUMERATOR NOTE:

To satisfy the intent of this measure, a patient must have at least one screening for unhealthy alcohol use during the 12-month period. If a patient has multiple screenings for unhealthy alcohol use during the 12-month period, only the most recent screening, which has a documented status of unhealthy alcohol user or unhealthy alcohol non-user, will be used to satisfy the measure requirements.

Denominator Exception(s) are determined on the date of the most recent denominator eligible encounter.

Numerator Options:

Performance Met:

Patient identified as an unhealthy alcohol user when screened for unhealthy alcohol use using a systematic screening method (**G2196**)

OR

Performance Met:

Patient screened for unhealthy alcohol use using a systematic screening method and not identified as an unhealthy alcohol user (**G2197**)

OR

Denominator Exception:

Documentation of medical reason(s) for not screening for unhealthy alcohol use using a systematic screening method (e.g., limited life expectancy, other medical reasons) (**G2198**)

OR

Performance Not Met:

Patient not screened for unhealthy alcohol use using a systematic screening method, reason not given (**G2199**)

SUBMISSION CRITERIA 2: ALL PATIENTS WHO WERE IDENTIFIED AS UNHEALTHY ALCOHOL USERS AND WHO RECEIVED BRIEF COUNSELING

DENOMINATOR (SUBMISSION CRITERIA 2):

All patients aged 18 years and older seen for at least two visits or at least one preventive visit during the measurement period who were screened for unhealthy alcohol use and identified as an unhealthy alcohol user

DENOMINATOR NOTE: *Signifies that this CPT Category I code is a non-covered service under the Medicare Part B PFS. These non-covered services should be counted in the denominator population for MIPS CQMs.

Denominator Criteria (Eligible Cases):

Patients aged ≥ 18 years

AND

All eligible instances when **G2196** is submitted for Performance Met (patient identified as an unhealthy alcohol user when screened for unhealthy alcohol use using a systematic screening method) in the numerator of Submission Criteria 1

AND

At least two patient encounters during the performance period (CPT or HCPCS): 90791, 90792, 90832, 90834, 90837, 90845, 96156, 96158, 97165, 97166, 97167, 97168, 97802, 97803, 97804, 99202, 99203, 99204, 99205, 99212, 99213, 99214, 99215, G0270, G0271

OR

At least one preventive encounter during the performance period (CPT or HCPCS): 99385*, 99386*, 99387*, 99395*, 99396*, 99397*, 99401*, 99402*, 99403*, 99404*, 99411*, 99412*, 99429*, G0438, G0439

NUMERATOR (SUBMISSION CRITERIA 2):

Patients who received brief counseling

Definitions:

Brief counseling – “Brief counseling” for unhealthy alcohol use refers to one or more counseling sessions, a minimum of 5-15 minutes, which may include: feedback on alcohol use and harms; identification of high risk situations for drinking and coping strategies; increased motivation and the development of a personal plan to reduce drinking.

NUMERATOR NOTE:

In the event that a patient is screened for unhealthy alcohol use and identified as an unhealthy user but did not receive brief alcohol cessation counseling submit G2202.

Denominator Exception(s) are determined on the date of the most recent denominator eligible encounter for all submission criteria.

Numerator Options:

Performance Met:

Patient identified as an unhealthy alcohol user received brief counseling (**G2200**)

OR

Denominator Exception:

Documentation of medical reason(s) for not providing brief counseling (e.g., limited life expectancy, other medical reasons) (**G2201**)

OR

Performance Not Met:

Patient did not receive brief counseling if identified as an unhealthy alcohol user, reason not given (**G2202**)

SUBMISSION CRITERIA 3: ALL PATIENTS WHO WERE SCREENED FOR UNHEALTHY ALCOHOL USE AND, IF IDENTIFIED AS AN UNHEALTHY ALCOHOL USER RECEIVED BRIEF COUNSELING, OR WERE NOT IDENTIFIED AS AN UNHEALTHY ALCOHOL USER

DENOMINATOR (SUBMISSION CRITERIA 3):

All patients aged 18 years and older seen for at least two visits or at least one preventive visit during the measurement period

DENOMINATOR NOTE: *Signifies that this CPT Category I code is a non-covered service under the Medicare Part B PFS. These non-covered services should be counted in the denominator population for MIPS CQMs.

Denominator Criteria (Eligible Cases):

Patients aged ≥ 18 years

AND

At least two patient encounters during the performance period (CPT or HCPCS): 90791, 90792, 90832, 90834, 90837, 90845, 96156, 96158, 97165, 97166, 97167, 97168, 97802, 97803, 97804, 99202, 99203, 99204, 99205, 99212, 99213, 99214, 99215, G0270, G0271

OR

At least one preventive encounter during the performance period (CPT or HCPCS): 99385*, 99386*,

99387*, 99395*, 99396*, 99397*, 99401*, 99402*, 99403*, 99404*, 99411*, 99412*, 99429*, G0438, G0439

NUMERATOR (SUBMISSION CRITERIA 3):

Patients who were screened for unhealthy alcohol use using a systematic screening method at least once within 12 months **AND** who received brief counseling if identified as an unhealthy alcohol user

Definitions:

Brief counseling – “Brief counseling” for unhealthy alcohol use refers to one or more counseling sessions, a minimum of 5-15 minutes, which may include: feedback on alcohol use and harms; identification of high risk situations for drinking and coping strategies; increased motivation and the development of a personal plan to reduce drinking.

NUMERATOR NOTE: *To satisfy the intent of this measure, a patient must have at least one unhealthy alcohol use screening during the 12-month period. If a patient has multiple unhealthy alcohol use screenings during the 12-month period, only the most recent screening, which has a documented status of unhealthy alcohol user or unhealthy alcohol non-user, will be used to satisfy the measure requirements.*

In the event that a patient is screened for unhealthy alcohol use and identified as an unhealthy user but did not receive brief alcohol cessation counseling submit G9624.

Denominator Exception(s) are determined on the date of the most recent denominator eligible encounter for all submission criteria.

Numerator Options:

Performance Met:

Patient identified as an unhealthy alcohol user when screened for unhealthy alcohol use using a systematic screening method and received brief counseling (**G9621**)

OR

Performance Met:

Patient not identified as an unhealthy alcohol user when screened for unhealthy alcohol use using a systematic screening method (**G9622**)

OR

Denominator Exception:

Documentation of medical reason(s) for not screening for unhealthy alcohol use (e.g., limited life expectancy, other medical reasons) (**G9623**)

OR

Denominator Exception:

Documentation of medical reason(s) for not providing brief counseling if identified as an unhealthy alcohol user (e.g., limited life expectancy, other medical reasons) (**G2203**)

OR

Performance Not Met:

Patient not screened for unhealthy alcohol use using a systematic screening method or patient did not receive brief counseling if identified as an unhealthy alcohol user, reason not given (**G9624**)

RATIONALE:

This measure is intended to promote unhealthy alcohol use screening and brief counseling which have been shown to be effective in reducing alcohol consumption, particularly in primary care settings.

A number of studies, including patient and provider surveys, have documented low rates of alcohol misuse screening and counseling in primary care settings. According to a study analyzing the quality of health care in the United States, on average, 45% of patients (n=6,676) were screened for problem drinking. (MCGlynn, et. al, 2003). In the national Healthcare for Communities Survey, only 8.7% of problem drinkers reported having been asked and counseled about their alcohol use in the last 12 months. (D'Amico, et. al., 2005)) A nationally representative sample of 648 primary care physicians were surveyed to determine how such physicians identify--or fail to identify-- substance abuse in their patients, what efforts they make to help these patients and what are the barriers to effective diagnosis and treatment. Of physicians who conducted annual health histories, less than half ask about the quantity and frequency of alcohol use (45.3 percent). Only 31.8 percent say they ever administer standard alcohol or drug use screening instruments to patients. (CASA, 2000) A national systematic sample of 2,000 physicians practicing general internal medicine, family medicine, obstetrics-gynecology, and psychiatry were surveyed to determine the frequency of screening and intervention for alcohol problems. Of the 853 respondent physicians, 88% usually or always ask new outpatients about alcohol use. When evaluating patients who drink, 47% regularly inquire about maximum amounts on an occasion, and 13% use formal alcohol screening tools. Only 82% routinely offer intervention to diagnosed problem drinkers. (Friedman, et. al., 2000). In 2014, the CDC analyzed data from 17 states and the District of Columbia via the Behavioral Risk Factor Surveillance System to estimate the prevalence of adults who reported receiving elements of alcohol screening and brief intervention. While 77.7% of adults reported being asked about alcohol use by a health professional, only 32.9% were asked about binge-level alcohol consumption and among binge drinkers only 37.2% reported being counseled on the harms of binge drinking. Only 18.1% reported being advised to cut down on alcohol consumption or to quit drinking. (McKnight-Eily, et. al., 2017). A multi-site, cross-sectional survey of primary care residents from six primary care residency programs administered from March 2010 through December 2012 found that a minority of the residents appropriately screen or provide intervention for at risk alcohol users. While 60% (125/208) stated they screen patients at an initial visit, only 17% (35/208) screened patients at subsequent visits. 54% (108/202) reported they did not feel they had adequate training to provide brief intervention to patients found to be at-risk alcohol users and 21% (43/208) felt they could really help at-risk drinkers. (Barnes et. al., 2015). A study evaluating self-reported prevalence of alcohol screening using information drawn from the ConsumerStyles survey (a random internet panel) found that only 24.7% (n=2,592) of adults reported being asked about their alcohol use While prevalence among men and women were about the same, there was lower prevalence of screening among Black non-Hispanics than white non-Hispanics (16.2% vs. 26.9%) and college graduates reported a higher prevalence of screening than those with a high school degree or less (38.1% vs. 20.8%). (Denny et. al., 2015). A cross-sectional analysis using 2016 DocStyles data that evaluated with use of different screening tools used to screen for alcohol misuse by 1,506 primary care providers found that while most providers screen for alcohol misuse (96%) only 38% reported using a USPSTF recommended screening tool. (Tan et. al., 2018).

CLINICAL RECOMMENDATION STATEMENTS:

The USPSTF recommends screening for unhealthy alcohol use in primary care settings in adults 18 years or older, including pregnant women, and providing persons engaged in risky or hazardous drinking with brief behavioral counseling interventions to reduce unhealthy alcohol use. (Grade B recommendation) (USPSTF, 2018)

COPYRIGHT:

This Physician Performance Measure (Measure) and related data specifications are owned and copyrighted by the National Committee for Quality Assurance (NCQA). NCQA is not responsible for any use of the Measure. The Measure is not a clinical guideline and does not establish a standard of medical care and has not been tested for all potential applications.

THE MEASURE AND SPECIFICATIONS ARE PROVIDED "AS IS" WITHOUT WARRANTY OF ANY KIND.

NCQA makes no representations, warranties, or endorsement about the quality of any organization or physician that uses or reports performance measures and NCQA has no liability to anyone who relies on such measures or specifications.

The Measure can be reproduced and distributed, without modification, for noncommercial purposes (e.g., use by healthcare providers in connection with their practices) without obtaining approval from NCQA. Commercial use is defined as the sale, licensing, or distribution of the Measure for commercial gain, or incorporation of the Measure into a product or service that is sold, licensed or distributed for commercial gain. All commercial uses or requests for modification must be approved by NCQA and are subject to a license at the discretion of NCQA. The PCPI's and AMA's significant past efforts and contributions to the development and updating of the measure are acknowledged.

©2012-2020 National Committee for Quality Assurance. All Rights Reserved.

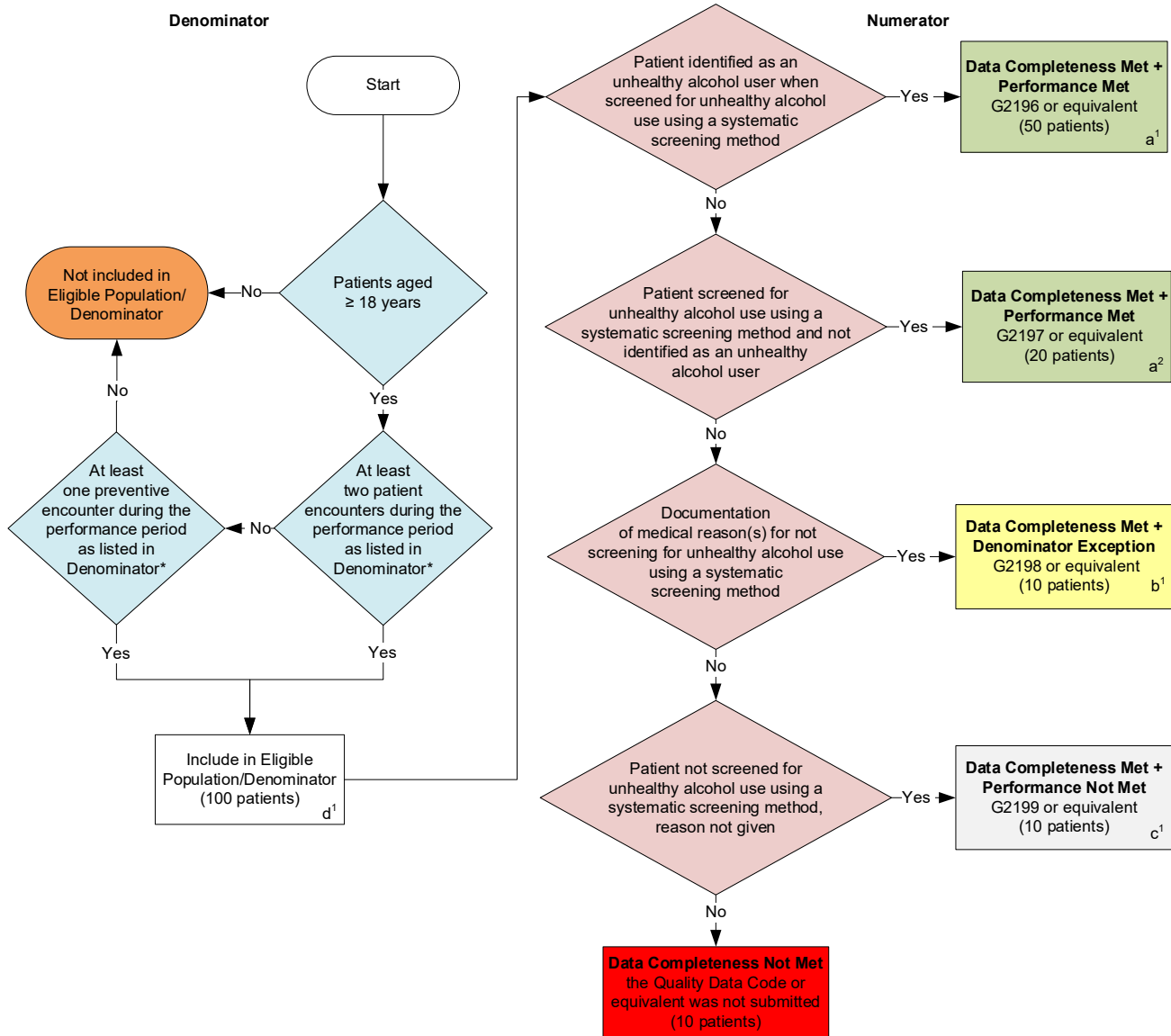
Limited proprietary coding is contained in the Measure specifications for user convenience. Users of proprietary code sets should obtain all necessary licenses from the owners of the code sets. NCQA disclaims all liability for use or accuracy of any third party codes contained in the specifications.

CPT® contained in the Measure specifications is copyright 2004-2020 American Medical Association. LOINC® copyright 2004-2020 Regenstrief Institute, Inc. This material contains SNOMED Clinical Terms® (SNOMED CT®) copyright 2004-2020 International Health Terminology Standards Development Organisation. ICD-10 copyright 2020 World Health Organization. All Rights Reserved.

**2021 Clinical Quality Measure Flow for Quality ID #431 (NQF 2152):
Preventive Care and Screening: Unhealthy Alcohol Use: Screening & Brief Counseling
Submission Criteria One**

Disclaimer: Refer to the measure specification for specific coding and instructions to submit this measure.

Multiple Performance Rates



SAMPLE CALCULATIONS: SUBMISSION CRITERIA ONE

Data Completeness=

$$\frac{\text{Performance Met (a}^1\text{+a}^2\text{=70 patients)} + \text{Denominator Exception (b}^1\text{=10 patients)} + \text{Performance Not Met (c}^1\text{=10 patients)}}{\text{Eligible Population / Denominator (d}^1\text{=100 patients)}} = \frac{90 \text{ patients}}{100 \text{ patients}} = 90.00\%$$

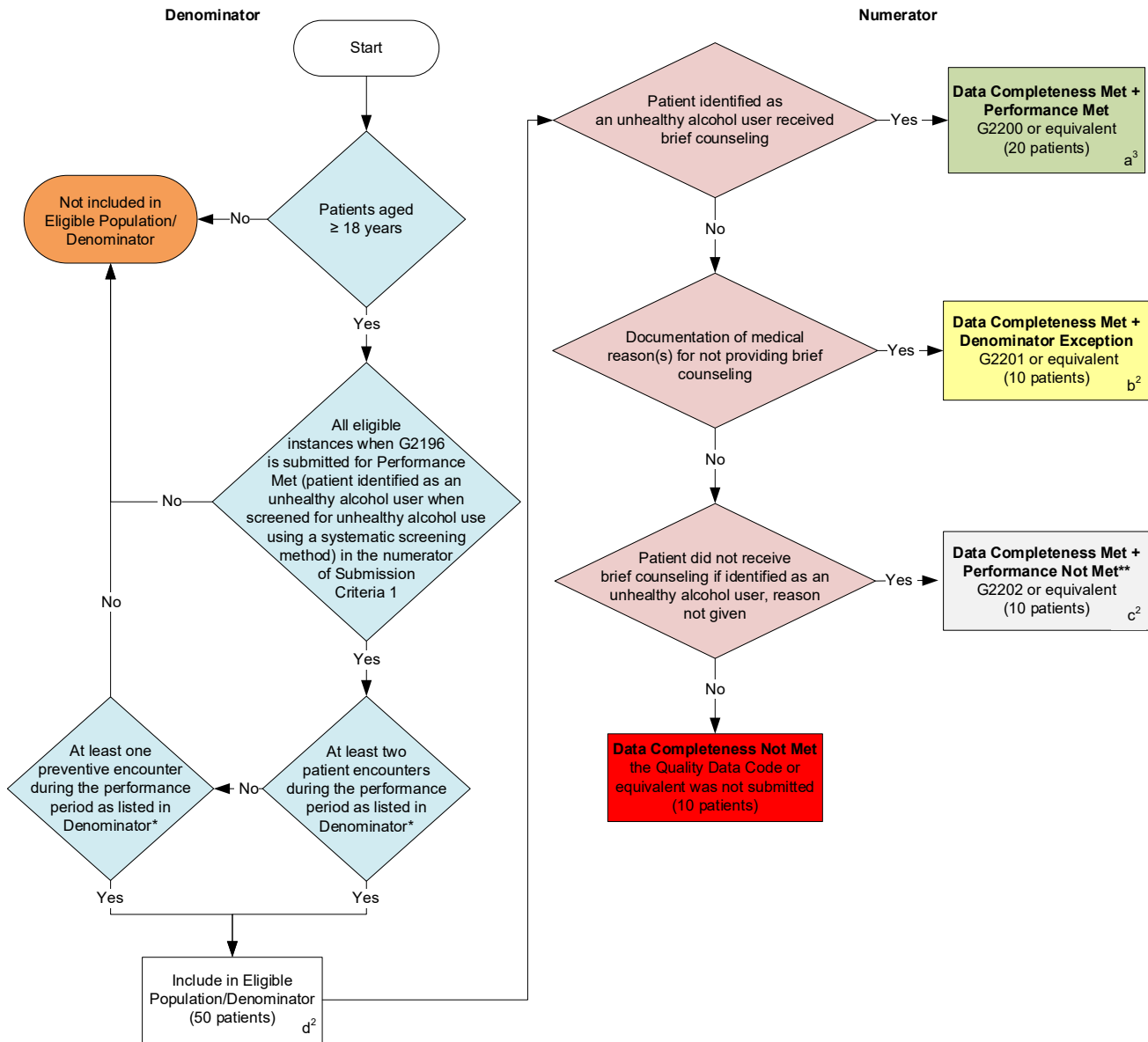
Performance Rate=

$$\frac{\text{Performance Met (a}^1\text{+a}^2\text{=70 patients)}}{\text{Data Completeness Numerator (90 patients) – Denominator Exception (b}^1\text{=10 patients)}} = \frac{70 \text{ patients}}{80 \text{ patients}} = 87.50\%$$

*See the posted measure specification for specific coding and instructions to submit this measure.
 Note: Submission Frequency: Patient-Process

CPT only copyright 2020 American Medical Association. All rights reserved.
 The measure diagrams were developed by CMS as a supplemental resource to be used in conjunction with the measure specifications. They should not be used alone or as a substitution for the measure specification. v5

Submission Criteria Two



SAMPLE CALCULATIONS: SUBMISSION CRITERIA TWO

Data Completeness=
 Performance Met (a³=20 patients) + Denominator Exception (b²=10 patients) + Performance Not Met (c²=10 patients) = 40 patients = 80.00%
 Eligible Population / Denominator (d²=50 patients) = 50 patients

Performance Rate=
 $\frac{\text{Performance Met (a}^3\text{=20 patients)}}{\text{Data Completeness Numerator (40 patients) - Denominator Exception (b}^2\text{=10 patients)}}$ = $\frac{20 \text{ patients}}{30 \text{ patients}}$ = 66.67%

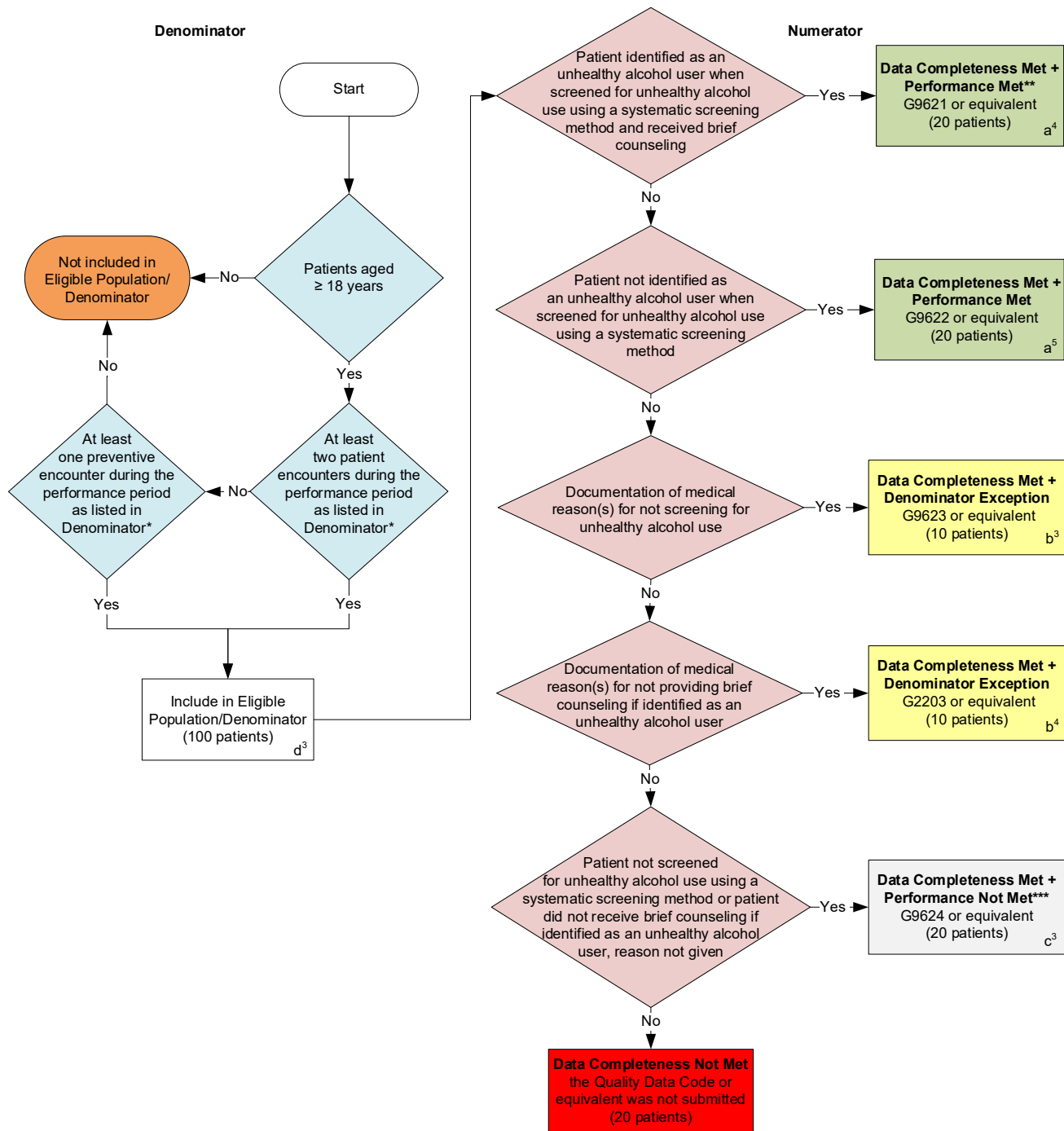
*See the posted measure specification for specific coding and instructions to submit this measure.

**In the event that a patient is screened for unhealthy alcohol use and identified as an unhealthy user but did not receive brief alcohol cessation counseling submit G2202.

Note: Submission Frequency: Patient-Process

CPT only copyright 2020 American Medical Association. All rights reserved.
 The measure diagrams were developed by CMS as a supplemental resource to be used in conjunction with the measure specifications. They should not be used alone or as a substitution for the measure specification. v5

Submission Criteria Three



SAMPLE CALCULATIONS: SUBMISSION CRITERIA THREE

Data Completeness=

$$\frac{\text{Performance Met (a}^4+\text{a}^5=40 \text{ patients)} + \text{Denominator Exception (b}^3+\text{b}^4=20 \text{ patients)} + \text{Performance Not Met (c}^3=20 \text{ patients)}}{\text{Eligible Population / Denominator (d}^3=100 \text{ patients)}} = \frac{80 \text{ patients}}{100 \text{ patients}} = 80.00\%$$

Performance Rate=

$$\frac{\text{Performance Met (a}^4+\text{a}^5=40 \text{ patients)}}{\text{Data Completeness Numerator (80 patients) - Denominator Exception (b}^3+\text{b}^4=20 \text{ patients)}} = \frac{40 \text{ patients}}{60 \text{ patients}} = 66.67\%$$

*See the posted measure specification for specific coding and instructions to submit this measure.

**Brief counseling for unhealthy alcohol use refers to one or more counseling sessions, a minimum of 5-15 minutes, which may include: feedback on alcohol use and harms; identification of high risk situations for drinking and coping strategies; increased motivation and the development of a personal plan to reduce drinking.

***In the event that a patient is screened for unhealthy alcohol use and identified as an unhealthy user but did not receive brief alcohol cessation counseling submit G9624.

Note: Submission Frequency: Patient-Process

CPT only copyright 2020 American Medical Association. All rights reserved.
The measure diagrams were developed by CMS as a supplemental resource to be used in conjunction with the measure specifications. They should not be used alone or as a substitution for the measure specification. v5

**2021 Clinical Quality Measure Flow Narrative for Quality ID #431 (NQF 2152):
Preventive Care and Screening: Unhealthy Alcohol Use: Screening & Brief Counseling**

Disclaimer: Refer to the measure specification for specific coding and instructions to submit this measure.

Multiple Performance Rates

Submission Criteria One:

1. Start with Denominator
2. Check *Patients aged greater than or equal to 18 years*:
 - a. If *Patients aged greater than or equal to 18 years* equals No, do not include in *Eligible Population/Denominator*. Stop processing.
 - b. If *Patients aged greater than or equal to 18 years* equals Yes, proceed to check *At least two patient encounters during the performance period as listed in Denominator**.
3. Check *At least two patient encounters during the performance period as listed in Denominator**:
 - a. If *At least two patient encounters during the performance period as listed in Denominator** equals No, proceed to check *At least one preventive encounter during the performance period as listed in Denominator**.
 - b. If *At least two patient encounters during the performance period as listed in Denominator** equals Yes, include in *Eligible Population/Denominator*.
4. Check *At least one preventive encounter during the performance period as listed in Denominator**:
 - a. If *At least one preventive encounter during the performance period as listed in Denominator** equals No, do not include in *Eligible Population/Denominator*. Stop processing.
 - b. If *At least one preventive encounter during the performance period as listed in Denominator** equals Yes, include in *Eligible Population/Denominator*.
5. Denominator Population:
 - a. Denominator Population is all Eligible Patients in the Denominator. Denominator is represented as Denominator in the Sample Calculation listed at the end of this document. Letter d¹ equals 100 patients in the Sample Calculation.
6. Start Numerator
7. Check *Patient identified as an unhealthy alcohol user when screened for unhealthy alcohol use using a systematic screening method*:
 - a. If *Patient identified as an unhealthy alcohol user when screened for unhealthy alcohol use using a systematic screening method* equals Yes, include in *Data Completeness Met and Performance Met*.
 - *Data Completeness Met and Performance Met* letter is represented in the Data Completeness and Performance Rate in the Sample Calculation listed at the end of this document. Letter a¹ equals 50 patients in the Sample Calculation.
 - b. If *Patient identified as an unhealthy alcohol user when screened for unhealthy alcohol use using a*

systematic screening method equals No, proceed to check Patient screened for unhealthy alcohol use using a systematic screening method and not identified as an unhealthy alcohol user.

8. Check *Patient screened for unhealthy alcohol use using a systematic screening method and not identified as an unhealthy alcohol user*.
 - a. If *Patient screened for unhealthy alcohol use using a systematic screening method and not identified as an unhealthy alcohol user equals Yes, include in Data Completeness Met and Performance Met*.
 - *Data Completeness Met and Performance Met* letter is represented in the Data Completeness and Performance Rate in the Sample Calculation listed at the end of this document. Letter a^2 equals 20 patients in the Sample Calculation.
 - b. If *Patient screened for unhealthy alcohol use using a systematic screening method and not identified as an unhealthy alcohol user equals No, proceed to check Documentation of medical reason(s) for not screening for unhealthy alcohol use using a systematic screening method*.
9. Check *Documentation of medical reason(s) for not screening for unhealthy alcohol use using a systematic screening method*:
 - a. If *Documentation of medical reason(s) for not screening for unhealthy alcohol use using a systematic screening method equals Yes, include in Data Completeness Met and Denominator Exception*.
 - *Data Completeness Met and Denominator Exception* letter is represented in the Data Completeness and Performance Rate in the Sample Calculation listed at the end of this document. Letter b^1 equals 10 patients in the Sample Calculation.
 - b. If *Documentation of medical reason(s) for not screening for unhealthy alcohol use using a systematic screening method equals No, proceed to check Patient not screened for unhealthy alcohol use using a systematic screening method, reason not given*.
10. Check *Patient not screened for unhealthy alcohol use using a systematic screening method, reason not given*:
 - a. If *Patient not screened for unhealthy alcohol use using a systematic screening method, reason not given equals Yes, include in Data Completeness Met and Performance Not Met*.
 - *Data Completeness Met and Performance Not Met* letter is represented in the Data Completeness in the Sample Calculation listed at the end of this document. Letter c^1 equals 10 patients in the Sample Calculation.
 - b. If *Patient not screened for unhealthy alcohol use using a systematic screening method, reason not given equals No, proceed to check Data Completeness Not Met*.
11. Check *Data Completeness Not Met*:
 - a. If *Data Completeness Not Met, the Quality Data Code or equivalent was not submitted. 10 patients have been subtracted from the Data Completeness Numerator in the Sample Calculation*.

Sample Calculations: Submission Criteria One

Data Completeness equals Performance Met (a^1 plus a^2 equals 70 patients) plus Denominator Exception (b^1 equals 10 patients) plus Performance Not Met (c^1 equals 10 patients) divided by Eligible Population / Denominator (d^1 equals 100 patients). All equals 90 patients divided by 100 patients. All equals 90.00 percent.

Performance Rate equals Performance Met (a^1 plus a^2 equals 70 patients) divided by Data Completeness Numerator (90 patients) minus Denominator Exception (b^1 equals 10 patients). All equals 70 patients divided by 80 patients. All equals 87.50 percent.

*See the posted measure specification for specific coding and instructions to submit this measure.

Note: Submission Frequency: Patient-Process

The measure diagrams were developed by CMS as a supplemental resource to be used in conjunction with the measure specifications. They should not be used alone or as a substitution for the measure specification.

Submission Criteria Two:

1. Start with Denominator
2. Check *Patients aged greater than or equal to 18 years*:
 - a. If *Patients aged greater than or equal to 18 years* equals No, do not include in *Eligible Population/Denominator*. Stop processing.
 - b. If *Patients aged greater than or equal to 18 years* equals Yes, proceed to check *All eligible instances of Performance Met when patient identified as an unhealthy alcohol user when screened for unhealthy alcohol use using a systematic screening method in the numerator of Submission Criteria 1*.
3. Check *All eligible instances of Performance Met when patient identified as an unhealthy alcohol user when screened for unhealthy alcohol use using a systematic screening method in the numerator of Submission Criteria 1*:
 - a. If *All eligible instances of Performance Met when patient identified as an unhealthy alcohol user when screened for unhealthy alcohol use using a systematic screening method in the numerator of Submission Criteria 1* equals No, do not include in *Eligible Population/Denominator*. Stop processing.
 - b. If *All eligible instances of Performance Met when patient identified as an unhealthy alcohol user when screened for unhealthy alcohol use using a systematic screening method in the numerator of Submission Criteria 1* equals Yes, proceed to check *At least two patient encounters during the performance period as listed in Denominator**.
4. Check *At least two patient encounters during the performance period as listed in Denominator**:
 - a. If *At least two patient encounters during the performance period as listed in Denominator** equals No, proceed to check *At least one preventive encounter during the performance period as listed in Denominator**.
 - b. If *At least two patient encounters during the performance period as listed in Denominator** equals Yes, include in *Eligible Population/Denominator*.
5. Check *At least one preventive encounter during the performance period as listed in Denominator**:
 - a. If *At least one preventive encounter during the performance period as listed in Denominator** equals No, do not include in *Eligible Population/Denominator*. Stop processing.
 - b. If *At least one preventive encounter during the performance period as listed in Denominator** equals Yes, include in *Eligible Population/Denominator*.

6. Denominator Population:
 - a. Denominator Population is all Eligible Patients in the Denominator. Denominator is represented as Denominator in the Sample Calculation listed at the end of this document. Letter d^2 equals 50 patients in the Sample Calculation.
7. Start Numerator
8. Check *Patient identified as an unhealthy alcohol user received brief counseling*:
 - a. If *Patient identified as an unhealthy alcohol user received brief counseling* equals Yes, include in *Data Completeness Met and Performance Met*.
 - *Data Completeness Met and Performance Met* letter is represented in the Data Completeness and Performance Rate in the Sample Calculation listed at the end of this document. Letter a^3 equals 20 patients in the Sample Calculation.
 - b. If *Patient identified as an unhealthy alcohol user received brief counseling* equals No, proceed to check *Documentation of medical reason(s) for not providing brief counseling*.
9. Check *Documentation of medical reason(s) for not providing brief counseling*:
 - a. If *Documentation of medical reason(s) for not providing brief counseling* equals Yes, include in *Data Completeness Met and Denominator Exception*.
 - *Data Completeness Met and Denominator Exception* letter is represented in the Data Completeness and Performance Rate in the Sample Calculation listed at the end of this document. Letter b^2 equals 10 patients in the Sample Calculation.
 - b. If *Documentation of medical reason(s) for not providing brief counseling* equals No, proceed to check *Patient did not receive brief counseling if identified as an unhealthy alcohol user, reason not given*.
10. Check *Patient did not receive brief counseling if identified as an unhealthy alcohol user, reason not given*:
 - a. If *Patient did not receive brief counseling if identified as an unhealthy alcohol user, reason not given* equals Yes, include in *Data Completeness Met and Performance Not Met***.
 - *Data Completeness Met and Performance Not Met*** letter is represented in the Data Completeness in the Sample Calculation listed at the end of this document. Letter c^2 equals 10 patients in the Sample Calculation.
 - b. If *Patient did not receive brief counseling if identified as an unhealthy alcohol user, reason not given* equals No, proceed to check *Data Completeness Not Met*.
11. Check *Data Completeness Not Met*:
 - a. If *Data Completeness Not Met*, the Quality Data Code or equivalent was not submitted. 10 patients have been subtracted from the Data Completeness Numerator in the Sample Calculation.

Sample Calculations: Submission Criteria Two

Data Completeness equals Performance Met (a^3 equals 20 patients) plus Denominator Exception (b^2 equals 10 patients) plus Performance Not Met (c^2 equals 10 patients) divided by Eligible Population / Denominator (d^2 equals 50 patients).

All equals 40 patients divided by 50 patients. All equals 80.00 percent.

Performance Rate equals Performance Met (a^3 equals 20 patients) divided by Data Completeness Numerator (40 patients) minus Denominator Exception (b^2 equals 10 patients). All equals 20 patients divided by 30 patients. All equals 66.67 percent.

*See the posted measure specification for specific coding and instructions to submit this measure.

**In the event that a patient is screened for unhealthy alcohol use and identified as an unhealthy alcohol user but did not receive brief alcohol cessation counseling submit G2202.

Note: Submission Frequency: Patient-Process

The measure diagrams were developed by CMS as a supplemental resource to be used in conjunction with the measure specifications. They should not be used alone or as a substitution for the measure specification.

Submission Criteria Three:

1. Start with Denominator
2. Check *Patients aged greater than or equal to 18 years*:
 - a. If *Patients aged greater than or equal to 18 years* equals No, do not include in *Eligible Population/Denominator*. Stop processing.
 - b. If *Patients aged greater than or equal to 18 years* equals Yes, proceed to check *At least two patient encounters during the performance period as listed in Denominator**.
3. Check *At least two patient encounters during the performance period as listed in Denominator**:
 - a. If *At least two patient encounters during the performance period as listed in Denominator** equals No, proceed to check *At least one preventive encounter during the performance period as listed in Denominator**.
 - b. If *At least two patient encounters during the performance period as listed in Denominator** equals Yes, include in *Eligible Population/Denominator*.
4. Check *At least one preventive encounter during the performance period as listed in Denominator**:
 - a. If *At least one preventive encounter during the performance period as listed in Denominator** equals No, do not include in *Eligible Population/Denominator*. Stop processing.
 - b. If *At least one preventive encounter during the performance period as listed in Denominator** equals Yes, include in *Eligible Population/Denominator*.
5. Denominator Population:
 - a. Denominator Population is all Eligible Patients in the Denominator. Denominator is represented as Denominator in the Sample Calculation listed at the end of this document. Letter d^3 equals 100 patients in the Sample Calculation.
6. Start Numerator

7. Check *Patient identified as an unhealthy alcohol user when screened for unhealthy alcohol use using a systematic screening method and received brief counseling*:
 - a. If *Patient identified as an unhealthy alcohol user when screened for unhealthy alcohol use using a systematic screening method and received brief counseling* equals Yes, include in *Data Completeness Met and Performance Met***.
 - *Data Completeness Met and Performance Met*** letter is represented in the Data Completeness and Performance Rate in the Sample Calculation listed at the end of this document. Letter a⁴ equals 20 patients in the Sample Calculation.
 - b. If *Patient identified as an unhealthy alcohol user when screened for unhealthy alcohol use using a systematic screening method and received brief counseling* equals No, proceed to check *Patient not identified as an unhealthy alcohol user when screened for unhealthy alcohol use using a systematic screening method*.
8. Check *Patient not identified as an unhealthy alcohol user when screened for unhealthy alcohol use using a systematic screening method*:
 - a. If *Patient not identified as an unhealthy alcohol user when screened for unhealthy alcohol use using a systematic screening method* equals Yes, include in *Data Completeness Met and Performance Met*.
 - *Data Completeness Met and Performance Met* letter is represented in the Data Completeness and Performance Rate in the Sample Calculation listed at the end of this document. Letter a⁵ equals 20 patients in the Sample Calculation.
 - b. If *Patient not identified as an unhealthy alcohol user when screened for unhealthy alcohol use using a systematic screening method* equals No, proceed to check *Documentation of medical reason(s) for not screening for unhealthy alcohol use*.
9. Check *Documentation of medical reason(s) for not screening for unhealthy alcohol use*:
 - a. If *Documentation of medical reason(s) for not screening for unhealthy alcohol use* equals Yes, include in *Data Completeness Met and Denominator Exception*.
 - *Data Completeness Met and Denominator Exception* letter is represented in the Data Completeness and Performance Rate in the Sample Calculation listed at the end of this document. Letter b³ equals 10 patients in the Sample Calculation.
 - b. If *Documentation of medical reason(s) for not screening for unhealthy alcohol use* equals No, proceed to check *Documentation of medical reason(s) for not providing brief counseling if identified as an unhealthy alcohol user*.
10. Check *Documentation of medical reason(s) for not providing brief counseling if identified as an unhealthy alcohol user*:
 - a. If *Documentation of medical reason(s) for not providing brief counseling if identified as an unhealthy alcohol user* equals Yes, include in *Data Completeness Met and Denominator Exception*.
 - *Data Completeness Met and Denominator Exception* letter is represented in the Data Completeness and Performance Rate in the Sample Calculation listed at the end of this document. Letter b⁴ equals 10 patients in the Sample Calculation.
 - b. If *Documentation of medical reason(s) for not providing brief counseling if identified as an unhealthy alcohol user* equals No, proceed to check *Documentation of medical reason(s) for not providing brief counseling if identified as an unhealthy alcohol user*.

alcohol user equals No, proceed to check Patient not screened for unhealthy alcohol use using a systematic screening method or patient did not receive brief counseling if identified as an unhealthy alcohol user, reason not given.

11. Check *Patient not screened for unhealthy alcohol use using a systematic screening method or patient did not receive brief counseling if identified as an unhealthy alcohol user, reason not given*:

a. If *Patient not screened for unhealthy alcohol use using a systematic screening method or patient did not receive brief counseling if identified as an unhealthy alcohol user, reason not given* equals Yes, include in *Data Completeness Met and Performance Not Met****.

- *Data Completeness Met and Performance Not Met**** letter is represented in the Data Completeness in the Sample Calculation listed at the end of this document. Letter c³ equals 20 patients in the Sample Calculation.

b. If *Patient not screened for unhealthy alcohol use using a systematic screening method or patient did not receive brief counseling if identified as an unhealthy alcohol user, reason not given* equals No, proceed to check *Data Completeness Not Met*.

12. Check *Data Completeness Not Met*:

a. If *Data Completeness Not Met*, the Quality Data Code or equivalent was not submitted. 20 patients have been subtracted from the Data Completeness Numerator in the Sample Calculation.

Sample Calculations: Submission Criteria Three

Data Completeness equals Performance Met (a⁴ plus a⁵ equals 40 patients) plus Denominator Exception (b³ plus b⁴ equals 20 patients) plus Performance Not Met (c³ equals 20 patients) divided by Eligible Population / Denominator (d³ equals 100 patients). All equals 80 patients divided by 100 patients. All equals 80.00 percent.

Performance Rate equals Performance Met (a⁴ plus a⁵ equals 40 patients) divided by Data Completeness Numerator (80 patients) minus Denominator Exception (b³ plus b⁴ equals 20 patients). All equals 40 patients divided by 60 patients. All equals 66.67 percent.

*See the posted measure specification for specific coding and instructions to submit this measure.

**Brief counseling for unhealthy alcohol use refers to one or more counseling sessions, a minimum of 5-15 minutes, which may include: feedback on alcohol use and harms; identification of high risk situations for drinking and coping strategies; increased motivation and the development of a personal plan to reduce drinking.

***In the event that a patient is screened for unhealthy alcohol use and identified as an unhealthy user but did not receive brief alcohol cessation counseling submit G9624.

Note: Submission Frequency: Patient-Process

The measure diagrams were developed by CMS as a supplemental resource to be used in conjunction with the measure specifications. They should not be used alone or as a substitution for the measure specification.