

Quality ID #457 (NQF 0216): Percentage of Patients who Died from Cancer Admitted to Hospice for Less than 3 Days (lower score – better)

- National Quality Strategy Domain: Effective Clinical Care
- Meaningful Measure Area: End of Life Care According to Preferences

2021 COLLECTION TYPE:
MIPS CLINICAL QUALITY MEASURES (CQMS)

MEASURE TYPE:
Outcome – High Priority

DESCRIPTION:
Percentage of patients who died from cancer, and admitted to hospice and spent less than 3 days there

INSTRUCTIONS:
This measure is to be submitted a minimum of **once per performance period** for patients who died of cancer during the measurement year. It is anticipated that Merit-based Incentive Payment System (MIPS) eligible clinicians who provide services for patients with the diagnosis of cancer will submit this measure.

Measure Submission Type:
Measure data may be submitted by individual MIPS eligible clinicians, groups, or third-party intermediaries. The listed denominator criteria are used to identify the intended patient population. The numerator options included in this specification are used to submit the quality actions as allowed by the measure. The quality-data codes listed do not need to be submitted by MIPS eligible clinicians, groups, or third-party intermediaries that utilize this modality for submissions; however, these codes may be submitted for those third-party intermediaries that utilize Medicare Part B claims data. For more information regarding Application Programming Interface (API), please refer to the Quality Payment Program (QPP) website.

DENOMINATOR:
Patients who died from cancer who were admitted to hospice

Denominator Criteria (Eligible Cases):

Diagnosis of cancer (ICD-10-CM): C00.0, C00.1, C00.2, C00.3, C00.4, C00.5, C00.6, C00.8, C00.9, C01, C02.0, C02.1, C02.2, C02.3, C02.4, C02.8, C02.9, C03.0, C03.1, C03.9, C04.0, C04.1, C04.8, C04.9, C05.0, C05.1, C05.2, C05.8, C05.9, C06.0, C06.1, C06.2, C06.80, C06.89, C06.9, C07, C08.0, C08.1, C08.9, C09.0, C09.1, C09.8, C09.9, C10.0, C10.1, C10.2, C10.3, C10.4, C10.8, C10.9, C11.0, C11.1, C11.2, C11.3, C11.8, C11.9, C12, C13.0, C13.1, C13.2, C13.8, C13.9, C14.0, C14.2, C14.8, C15.3, C15.4, C15.5, C15.8, C15.9, C16.0, C16.1, C16.2, C16.3, C16.4, C16.5, C16.6, C16.8, C16.9, C17.0, C17.1, C17.2, C17.3, C17.8, C17.9, C18.0, C18.1, C18.2, C18.3, C18.4, C18.5, C18.6, C18.7, C18.8, C18.9, C19, C20, C21.0, C21.1, C21.2, C21.8, C22.0, C22.1, C22.2, C22.3, C22.4, C22.7, C22.8, C22.9, C23, C24.0, C24.1, C24.8, C24.9, C25.0, C25.1, C25.2, C25.3, C25.4, C25.7, C25.8, C25.9, C26.0, C26.1, C26.9, C30.0, C30.1, C31.0, C31.1, C31.2, C31.3, C31.8, C31.9, C32.0, C32.1, C32.2, C32.3, C32.8, C32.9, C33, C34.00, C34.01, C34.02, C34.10, C34.11, C34.12, C34.2, C34.30, C34.31, C34.32, C34.80, C34.81, C34.82, C34.90, C34.91, C34.92, C37, C38.0, C38.1, C38.2, C38.3, C38.4, C38.8, C39.0, C39.9, C40.00, C40.01, C40.02, C40.10, C40.11, C40.12, C40.20, C40.21, C40.22, C40.30, C40.31, C40.32, C40.80, C40.81, C40.82, C40.90, C40.91, C40.92, C41.0, C41.1, C41.2, C41.3, C41.4, C41.9, C43.0, C43.10, C43.11, C43.112, C43.121, C43.122, C43.20, C43.21, C43.22, C43.30, C43.31, C43.39, C43.4, C43.51, C43.52, C43.59, C43.60, C43.61, C43.62, C43.70, C43.71, C43.72, C43.8, C43.9, C44.00, C44.01, C44.02, C44.09, C44.101, C44.1021, C44.1022, C44.1091, C44.1092, C44.111, C44.1121, C44.1122, C44.1191, C44.1192, C44.121, C44.1221, C44.1222, C44.1291, C44.1292, C44.131, C44.1321, C44.1322, C44.1391, C44.1392, C44.191, C44.1921, C44.1922, C44.1991, C44.1992, C44.201, C44.202, C44.209, C44.211, C44.212, C44.219, C44.221, C44.222, C44.229, C44.291, C44.292, C44.299, C44.300, C44.301, C44.309, C44.310, C44.311, C44.319, C44.320, C44.321, C44.329, C44.390, C44.391, C44.399, C44.40, C44.41, C44.42,

C44.49, C44.500, C44.501, C44.509, C44.510, C44.511, C44.519, C44.520, C44.521, C44.529, C44.590, C44.591, C44.599, C44.601, C44.602, C44.609, C44.611, C44.612, C44.619, C44.621, C44.622, C44.629, C44.691, C44.692, C44.699, C44.701, C44.702, C44.709, C44.711, C44.712, C44.719, C44.721, C44.722, C44.729, C44.791, C44.792, C44.799, C44.80, C44.81, C44.82, C44.89, C44.90, C44.91, C44.92, C44.99, C45.0, C45.1, C45.2, C45.7, C45.9, C46.0, C46.1, C46.2, C46.3, C46.4, C46.50, C46.51, C46.52, C46.7, C46.9, C47.0, C47.10, C47.11, C47.12, C47.20, C47.21, C47.22, C47.3, C47.4, C47.5, C47.6, C47.8, C47.9, C48.0, C48.1, C48.2, C48.8, C49.0, C49.10, C49.11, C49.12, C49.20, C49.21, C49.22, C49.3, C49.A0, C49.A1, C49.A2, C49.A3, C49.A4, C49.A5, C49.A9, C49.4, C49.5, C49.6, C49.8, C49.9, C4A.0, C4A.10, C4A.111, C4A.112, C4A.121, C4A.122, C4A.20, C4A.21, C4A.22, C4A.30, C4A.31, C4A.39, C4A.4, C4A.51, C4A.52, C4A.59, C4A.60, C4A.61, C4A.62, C4A.70, C4A.71, C4A.72, C4A.8, C4A.9, C50.011, C50.012, C50.019, C50.021, C50.022, C50.029, C50.111, C50.112, C50.119, C50.121, C50.122, C50.129, C50.211, C50.212, C50.219, C50.221, C50.222, C50.229, C50.311, C50.312, C50.319, C50.321, C50.322, C50.329, C50.411, C50.412, C50.419, C50.421, C50.422, C50.429, C50.511, C50.512, C50.519, C50.521, C50.522, C50.529, C50.611, C50.612, C50.619, C50.621, C50.622, C50.629, C50.811, C50.812, C50.819, C50.821, C50.822, C50.829, C50.911, C50.912, C50.919, C50.921, C50.922, C50.929, C51.0, C51.1, C51.2, C51.8, C51.9, C52, C53.0, C53.1, C53.8, C53.9, C54.0, C54.1, C54.2, C54.3, C54.8, C54.9, C55, C56.1, C56.2, C56.9, C57.00, C57.01, C57.02, C57.10, C57.11, C57.12, C57.20, C57.21, C57.22, C57.3, C57.4, C57.7, C57.8, C57.9, C58, C60.0, C60.1, C60.2, C60.8, C60.9, C61, C62.00, C62.01, C62.02, C62.10, C62.11, C62.12, C62.90, C62.91, C62.92, C63.00, C63.01, C63.02, C63.10, C63.11, C63.12, C63.2, C63.7, C63.8, C63.9, C64.1, C64.2, C64.9, C65.1, C65.2, C65.9, C66.1, C66.2, C66.9, C67.0, C67.1, C67.2, C67.3, C67.4, C67.5, C67.6, C67.7, C67.8, C67.9, C68.0, C68.1, C68.8, C68.9, C69.00, C69.01, C69.02, C69.10, C69.11, C69.12, C69.20, C69.21, C69.22, C69.30, C69.31, C69.32, C69.40, C69.41, C69.42, C69.50, C69.51, C69.52, C69.60, C69.61, C69.62, C69.80, C69.81, C69.82, C69.90, C69.91, C69.92, C70.0, C70.1, C70.9, C71.0, C71.1, C71.2, C71.3, C71.4, C71.5, C71.6, C71.7, C71.8, C71.9, C72.0, C72.1, C72.20, C72.21, C72.22, C72.30, C72.31, C72.32, C72.40, C72.41, C72.42, C72.50, C72.59, C72.9, C73, C74.00, C74.01, C74.02, C74.10, C74.11, C74.12, C74.90, C74.91, C74.92, C75.0, C75.1, C75.2, C75.3, C75.4, C75.5, C75.8, C75.9, C76.0, C76.1, C76.2, C76.3, C76.40, C76.41, C76.42, C76.50, C76.51, C76.52, C76.8, C77.0, C77.1, C77.2, C77.3, C77.4, C77.5, C77.8, C77.9, C78.00, C78.01, C78.02, C78.1, C78.2, C78.30, C78.39, C78.4, C78.5, C78.6, C78.7, C78.80, C78.89, C79.00, C79.01, C79.02, C79.10, C79.11, C79.19, C79.2, C79.31, C79.32, C79.40, C79.49, C79.51, C79.52, C79.60, C79.61, C79.62, C79.70, C79.71, C79.72, C79.81, C79.82, C79.89, C79.9, C7A.00, C7A.010, C7A.011, C7A.012, C7A.019, C7A.020, C7A.021, C7A.022, C7A.023, C7A.024, C7A.025, C7A.026, C7A.029, C7A.090, C7A.091, C7A.092, C7A.093, C7A.094, C7A.095, C7A.096, C7A.098, C7A.1, C7A.8, C7B.00, C7B.01, C7B.02, C7B.03, C7B.04, C7B.09, C7B.1, C7B.8, C80.0, C80.1, C80.2, C81.00, C81.01, C81.02, C81.03, C81.04, C81.05, C81.06, C81.07, C81.08, C81.09, C81.10, C81.11, C81.12, C81.13, C81.14, C81.15, C81.16, C81.17, C81.18, C81.19, C81.20, C81.21, C81.22, C81.23, C81.24, C81.25, C81.26, C81.27, C81.28, C81.29, C81.30, C81.31, C81.32, C81.33, C81.34, C81.35, C81.36, C81.37, C81.38, C81.39, C81.40, C81.41, C81.42, C81.43, C81.44, C81.45, C81.46, C81.47, C81.48, C81.49, C81.70, C81.71, C81.72, C81.73, C81.74, C81.75, C81.76, C81.77, C81.78, C81.79, C81.90, C81.91, C81.92, C81.93, C81.94, C81.95, C81.96, C81.97, C81.98, C81.99, C82.00, C82.01, C82.02, C82.03, C82.04, C82.05, C82.06, C82.07, C82.08, C82.09, C82.10, C82.11, C82.12, C82.13, C82.14, C82.15, C82.16, C82.17, C82.18, C82.19, C82.20, C82.21, C82.22, C82.23, C82.24, C82.25, C82.26, C82.27, C82.28, C82.29, C82.30, C82.31, C82.32, C82.33, C82.34, C82.35, C82.36, C82.37, C82.38, C82.39, C82.40, C82.41, C82.42, C82.43, C82.44, C82.45, C82.46, C82.47, C82.48, C82.49, C82.50, C82.51, C82.52, C82.53, C82.54, C82.55, C82.56, C82.57, C82.58, C82.59, C82.60, C82.61, C82.62, C82.63, C82.64, C82.65, C82.66, C82.67, C82.68, C82.69, C82.80, C82.81, C82.82, C82.83, C82.84, C82.85, C82.86, C82.87, C82.88, C82.89, C82.90, C82.91, C82.92, C82.93, C82.94, C82.95, C82.96, C82.97, C82.98, C82.99, C83.00, C83.01, C83.02, C83.03, C83.04, C83.05, C83.06, C83.07, C83.08, C83.09, C83.10, C83.11, C83.12, C83.13, C83.14, C83.15, C83.16, C83.17, C83.18, C83.19, C83.30, C83.31, C83.32, C83.33, C83.34, C83.35, C83.36, C83.37, C83.38, C83.39, C83.50, C83.51, C83.52, C83.53, C83.54, C83.55, C83.56, C83.57, C83.58, C83.59, C83.70, C83.71, C83.72, C83.73, C83.74, C83.75, C83.76, C83.77, C83.78, C83.79, C83.80, C83.81, C83.82, C83.83, C83.84, C83.85, C83.86, C83.87,

C83.88, C83.89, C83.90, C83.91, C83.92, C83.93, C83.94, C83.95, C83.96, C83.97, C83.98, C83.99, C84.00, C84.01, C84.02, C84.03, C84.04, C84.05, C84.06, C84.07, C84.08, C84.09, C84.10, C84.11, C84.12, C84.13, C84.14, C84.15, C84.16, C84.17, C84.18, C84.19, C84.40, C84.41, C84.42, C84.43, C84.44, C84.45, C84.46, C84.47, C84.48, C84.49, C84.60, C84.61, C84.62, C84.63, C84.64, C84.65, C84.66, C84.67, C84.68, C84.69, C84.70, C84.71, C84.72, C84.73, C84.74, C84.75, C84.76, C84.77, C84.78, C84.79, C84.90, C84.91, C84.92, C84.93, C84.94, C84.95, C84.96, C84.97, C84.98, C84.99, C84.A0, C84.A1, C84.A2, C84.A3, C84.A4, C84.A5, C84.A6, C84.A7, C84.A8, C84.A9, C84.Z0, C84.Z1, C84.Z2, C84.Z3, C84.Z4, C84.Z5, C84.Z6, C84.Z7, C84.Z8, C84.Z9, C85.10, C85.11, C85.12, C85.13, C85.14, C85.15, C85.16, C85.17, C85.18, C85.19, C85.20, C85.21, C85.22, C85.23, C85.24, C85.25, C85.26, C85.27, C85.28, C85.29, C85.80, C85.81, C85.82, C85.83, C85.84, C85.85, C85.86, C85.87, C85.88, C85.89, C85.90, C85.91, C85.92, C85.93, C85.94, C85.95, C85.96, C85.97, C85.98, C85.99, C86.0, C86.1, C86.2, C86.3, C86.4, C86.5, C86.6, C88.0, C88.2, C88.3, C88.4, C88.8, C88.9, C90.00, C90.01, C90.02, C90.10, C90.11, C90.12, C90.20, C90.21, C90.22, C90.30, C90.31, C90.32, C91.00, C91.01, C91.02, C91.10, C91.11, C91.12, C91.30, C91.31, C91.32, C91.40, C91.41, C91.42, C91.50, C91.51, C91.52, C91.60, C91.61, C91.62, C91.90, C91.91, C91.92, C91.A0, C91.A1, C91.A2, C91.Z0, C91.Z1, C91.Z2, C92.00, C92.01, C92.02, C92.10, C92.11, C92.12, C92.20, C92.21, C92.22, C92.30, C92.31, C92.32, C92.40, C92.41, C92.42, C92.50, C92.51, C92.52, C92.60, C92.61, C92.62, C92.90, C92.91, C92.92, C92.A0, C92.A1, C92.A2, C92.Z0, C92.Z1, C92.Z2, C93.00, C93.01, C93.02, C93.10, C93.11, C93.12, C93.30, C93.31, C93.32, C93.90, C93.91, C93.92, C93.Z0, C93.Z1, C93.Z2, C94.00, C94.01, C94.02, C94.20, C94.21, C94.22, C94.30, C94.31, C94.32, C94.40, C94.41, C94.42, C94.6, C94.80, C94.81, C94.82, C95.00, C95.01, C95.02, C95.10, C95.11, C95.12, C95.90, C95.91, C95.92, C96.0, C96.20, C96.21, C96.22, C96.29, C96.4, C96.5, C96.6, C96.9, C96.A, C96.Z, D37.01, D37.02, D37.030, D37.031, D37.032, D37.039, D37.04, D37.05, D37.09, D37.1, D37.2, D37.3, D37.4, D37.5, D37.6, D37.8, D37.9, D38.0, D38.1, D38.2, D38.3, D38.4, D38.5, D38.6, D39.0, D39.10, D39.11, D39.12, D39.2, D39.8, D39.9, D40.0, D40.10, D40.11, D40.12, D40.8, D40.9, D41.00, D41.01, D41.02, D41.10, D41.11, D41.12, D41.20, D41.21, D41.22, D41.3, D41.4, D41.8, D41.9, D42.0, D42.1, D42.9, D43.0, D43.1, D43.2, D43.3, D43.4, D43.8, D43.9, D44.0, D44.10, D44.11, D44.12, D44.2, D44.3, D44.4, D44.5, D44.6, D44.7, D44.9, D45, D46.0, D46.1, D46.20, D46.21, D46.22, D46.4, D46.9, D46.A, D46.B, D46.C, D46.Z, D47.01, D47.02, D47.09, D47.1, D47.2, D47.3, D47.4, D47.9, D47.Z1, D47.Z2, D47.Z9, D48.0, D48.1, D48.2, D48.3, D48.4, D48.5, D48.60, D48.61, D48.62, D48.7, D48.9, D49.0, D49.1, D49.2, D49.3, D49.4, D49.511, D49.512, D49.519, D49.59, D49.6, D49.7, D49.81, D49.89, D49.9

AND

Patient encounter(s) during performance period (CPT): 99202, 99203, 99204, 99205, 99212, 99213, 99214, 99215

WITHOUT

Telehealth Modifier: GQ, GT, 95, POS 02

AND

Two or more encounters at the reporting site

AND

Patient enrolled in hospice: G9858

AND

Patients who died from cancer: G9859

NUMERATOR:

Patients who died from cancer and spent fewer than three days in hospice

Numerator Instructions:

INVERSE MEASURE- A lower calculated performance rate for this measure indicates better clinical care or control. The "Performance Not Met" numerator option for this measure is the representation of the better clinical quality or control. Submitting that numerator option will produce a performance rate that trends closer to 0%, as quality increases. For inverse measures, a rate of 100% means all of the denominator eligible patients did not receive the appropriate care or were not in proper control.

Numerator Options:

Performance Met:

Patient spent less than three days in hospice care
(G9860)

OR

Performance Not Met:

Patient spent greater than or equal to three days in
hospice care (G9861)

RATIONALE:

Although the use of hospice and other palliative care services at the end of life has increased, many patients are enrolled in hospice for 3 days or less before their death, which limits the benefit they may gain from these services. One recent retrospective study of more than 64,000 patients with cancer who were admitted to hospice found that over 16% of those patients were only enrolled in the last three days of life or less (O'Connor, 2014). The rate of patients who do not have a hospice referral prior to death continues to be higher than desired with one study reporting that more than 30% of patients were not referred and of those patients, only 7% had a documented discussion on the option of palliative care (O'Connor, 2015). Patients enrolled in hospice experience increased survival times along with a reduction in resource use such as aggressive end of life care and hospital admissions; benefits that increased the longer patients are enrolled in hospice (Lee, 2015; Langton, 2014).

Langton, J. M., B. Blanch, et al. (2014). "Retrospective studies of end-of-life resource utilization and costs in cancer care using health administrative data: a systematic review." *Palliat Med* **28**(10): 1167-1196.

Lee, Y. J., J. H. Yang, et al. (2015). "Association between the duration of palliative care service and survival in terminal cancer patients." *Support Care Cancer* **23**(4): 1057-1062.

O'Connor, T. L., N. Ngamphaiboon, et al. (2015). "Hospice utilization and end-of-life care in metastatic breast cancer patients at a comprehensive cancer center." *J Palliat Med* **18**(1): 50-55.

CLINICAL RECOMMENDATION STATEMENTS:

A 2012 American Society of Clinical Oncology (ASCO) Provisional Clinical Opinion (PCO) addressed the integration of palliative care (PC) services into standard oncology care at the time a person is diagnosed with metastatic cancer and/or high symptom burden.

Seven published randomized trials demonstrate the feasibility of providing various components of PC alongside usual oncology care. There is, however, a dearth of data evaluating the integration of modern PC practices into standard oncology care, especially in concert with ongoing antitumor therapy. Overall, the addition of PC interventions to standard oncology care delivered via different models to patients with cancer provided evidence of benefit.

Citation: Smith TJ, Temin S, Alesi ER, et al. American Society of Clinical Oncology Provisional Clinical Opinion: The Integration of Palliative Care into Standard Oncology Care. *J Clin Oncol* 2012; 30:880-887. Available at: [American Society of Clinical Oncology Website](http://www.asco.org)

COPYRIGHT:

The Measure is not clinical guideline, does not establish a standard of medical care, and has not been tested for all potential applications.

The Measure, while copyrighted, can be reproduced and distributed, without modification, for noncommercial purposes, e.g., use by health care providers in connection with their practices. Commercial use is defined as the sale, license, or distribution of the Measure for commercial gain, or incorporation of the Measure into a product or service that is sold, licensed or distributed for commercial gain.

Commercial uses of the Measure require a license agreement between the user and American Society of Clinical Oncology (ASCO) and prior written approval of ASCO. Contact measurement@asco.org for licensing this measure. Neither ASCO, nor its members shall be responsible for any use of the Measure.

ASCO encourages use of the Measure by other health care professionals, where appropriate.

THE MEASURES AND SPECIFICATIONS ARE PROVIDED “AS IS” WITHOUT WARRANTY OF ANY KIND.

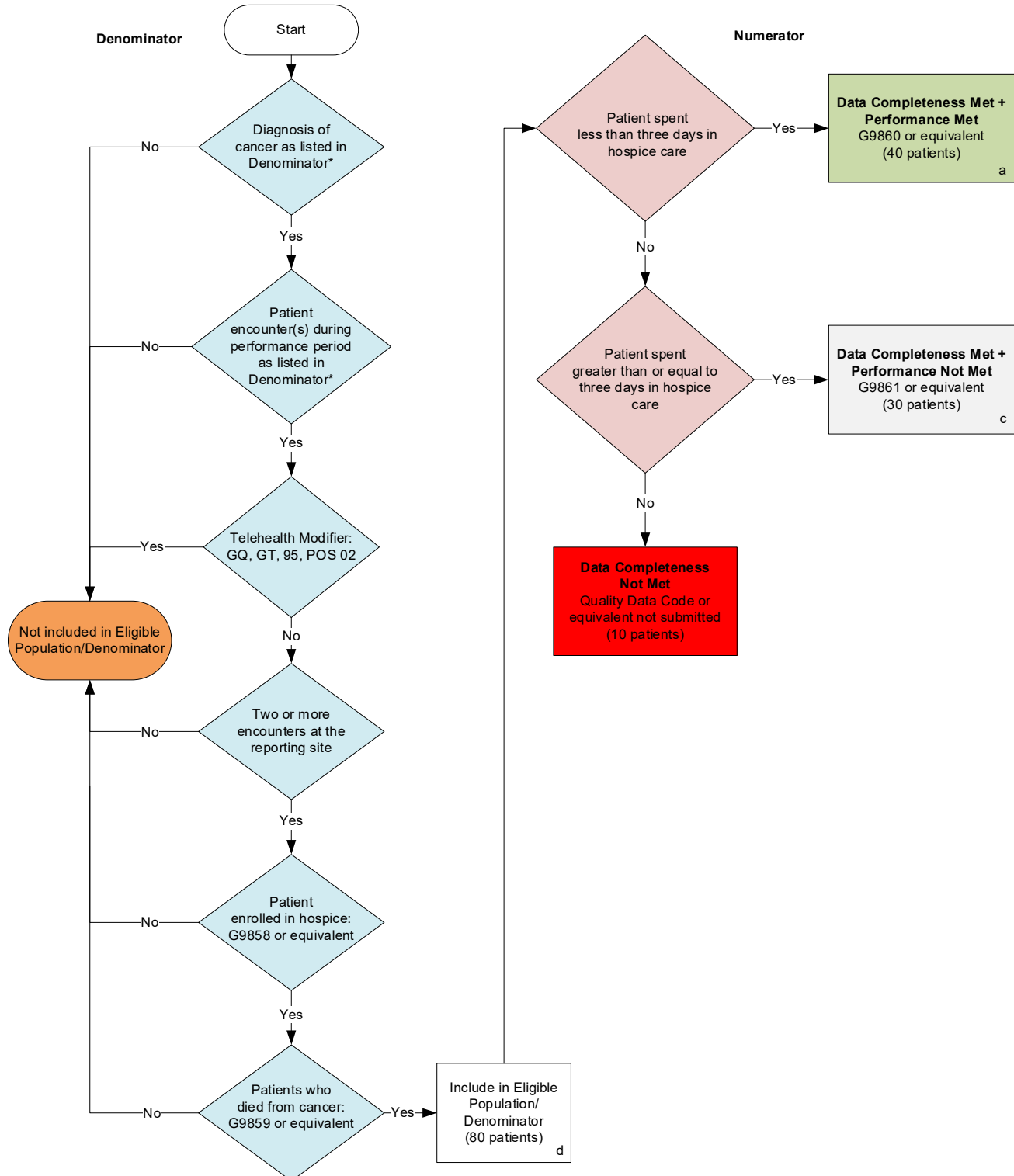
©2021 American Society of Clinical Oncology All Rights Reserved.

Limited proprietary coding is contained in the measure specifications for convenience. Users of the proprietary code sets should obtain all necessary licenses from the owners of these code sets. ASCO, and its members disclaim all liability for use or accuracy of any Current Procedural Terminology (CPT®) or other coding contained in the specifications.

CPT® contained in this Measure specifications is copyright 2004-2020 American Medical Association. ICD-10 is copyright 2020 World Health Organization. All Rights Reserved.

**2021 Clinical Quality Measure Flow for Quality ID #457 (NQF 0216):
Percentage of Patients who Died from Cancer Admitted to Hospice for Less than 3 Days
(lower score – better)**

Disclaimer: Refer to the measure specification for specific coding and instructions to submit this measure.



SAMPLE CALCULATIONS

Data Completeness=

$$\frac{\text{Performance Met (a=40 patients)} + \text{Performance Not Met (c=30 patients)}}{\text{Eligible Population / Denominator (d=80 patients)}} = \frac{70 \text{ patients}}{80 \text{ patients}} = 87.50\%$$

Performance Rate=

$$\frac{\text{Performance Met (a=40 patients)}}{\text{Data Completeness Numerator (70 patients)}} = \frac{40 \text{ patients}}{70 \text{ patients}} = 57.14\%$$

*See the posted measure specification for specific coding and instructions to submit this measure.

A lower calculated performance rate for this measure indicates better clinical control and care.

NOTE: Submission Frequency: Patient-Process

CPT only copyright 2020 American Medical Association. All rights reserved.
The measure diagrams were developed by CMS as a supplemental resource to be used in conjunction with the measure specifications. They should not be used alone or as a substitution for the measure specification. v5

**2020 Clinical Quality Measure Flow Narrative for Quality ID #457 NQF #0216:
Percentage of Patients who Died from Cancer Admitted to Hospice for Less than
3 Days (lower score – better)**

Disclaimer: Refer to the measure specification for specific coding and instructions to submit this measure.

1. Start with Denominator
2. Check *Diagnosis of cancer as listed in Denominator**:
 - a. If *Diagnosis of cancer as listed in Denominator** equals No, do not include in *Eligible Population/Denominator*. Stop processing.
 - b. If *Diagnosis of cancer as listed in Denominator** equals Yes, proceed to check *Patient encounter(s) during performance period as listed in Denominator**.
3. Check *Patient encounter(s) during performance period as listed in Denominator**:
 - a. If *Patient encounter(s) during performance period as listed in Denominator** equals No, do not include in *Eligible Population/Denominator*. Stop processing.
 - b. If *Patient encounter(s) during performance period as listed in Denominator** equals Yes, proceed to check *Telehealth Modifier*.
4. Check *Telehealth Modifier*:
 - a. If *Telehealth Modifier* equals No, do not include in *Eligible Population/Denominator*. Stop processing.
 - b. If *Telehealth Modifier* equals Yes, proceed to check *Two or more encounters at the reporting site*.
5. Check *Two or more encounters at the reporting site*:
 - a. If *Two or more encounters at the reporting site* equals No, do not include in *Eligible Population/Denominator*. Stop processing.
 - b. If *Two or more encounters at the reporting site* equals Yes, proceed to check *Patient enrolled in hospice*.
6. Check *Patient enrolled in hospice*:
 - c. If *Patient enrolled in hospice* equals No, do not include in *Eligible Population/Denominator*. Stop processing.
 - d. If *Patient enrolled in hospice* equals Yes, proceed to check *Patients who died from cancer*.
7. Check *Patients who died from cancer*:
 - a. If *Patients who died from cancer* equals No, do not include in *Eligible Population/Denominator*. Stop processing.
 - b. If *Patients who died from cancer* equals Yes, include in *Eligible Population/Denominator*.
8. Denominator Population:
 - a. Denominator Population is all Eligible Patients in the Denominator. Denominator is represented as Denominator in the Sample Calculation listed at the end of this document. Letter d equals 80 patients in the Sample Calculation.
9. Start Numerator
10. Check *Patient spent less than three days in hospice care*:
 - a. If *Patient spent less than three days in hospice care* equals Yes, include in *Data Completeness Met and Performance Met*.

- *Data Completeness Met and Performance Met* letter is represented in the Data Completeness and Performance Rate in the Sample Calculation listed at the end of this document. Letter a equals 40 patients in the Sample Calculation.
- b. If *Patient spent less than three days in hospice care* equals No, proceed to check *Patient spent greater than or equal to three days in hospice care*.
11. Check *Patient spent greater than or equal to three days in hospice care*:
 - a. If *Patient spent greater than or equal to three days in hospice care* equals Yes, include in *Data Completeness Met and Performance Not Met*.
 - *Data Completeness Met and Performance Not Met* letter is represented in the Data Completeness in the Sample Calculation listed at the end of this document. Letter c equals 30 patients in the Sample Calculation.
 - b. If *Patient spent greater than or equal to three days in hospice care* equals No, proceed to check *Data Completeness Not Met*.
 12. Check *Data Completeness Not Met*:
 - a. If *Data Completeness Not Met*, the Quality Data Code or equivalent was not submitted. 10 patients have been subtracted from the Data Completeness Numerator in the Sample Calculation.

Sample Calculations:

Data Completeness equals Performance Met (a equals 40 patients) plus Performance Not Met (c equals 30 patients) divided by Eligible Population/Denominator (d equals 80 patients). All equals 70 patients divided by 80 patients. All equals 87.5 percent.

Performance Rate equals Performance Met (a equals 40 patients) divided by Data Completeness Numerator (70 patients). All equals 40 patients divided by 70 patients. All equals 57.14 percent.

*See the posted measure specification for specific coding and instructions to submit this measure.

NOTE: Submission Frequency: Patient-Process

The measure diagrams were developed by CMS as a supplemental resource to be used in conjunction with the measure specifications. They should not be used alone or as a substitution for the measure specification.