

Quality ID #177 (NQF 2523): Rheumatoid Arthritis (RA): Periodic Assessment of Disease Activity
– National Quality Strategy Domain: Effective Clinical Care Measure
– Meaningful Measure Area: Management of Chronic Conditions

2022 COLLECTION TYPE:
MIPS CLINICAL QUALITY MEASURES (CQMS)

MEASURE TYPE:
Process

DESCRIPTION:
Percentage of patients aged 18 years and older with a diagnosis of rheumatoid arthritis (RA) who have an assessment of disease activity using an ACR-preferred RA disease activity assessment tool at ≥50% of encounters for RA for each patient during the measurement year.

INSTRUCTIONS:
This measure is to be submitted a minimum of **once per performance period** for patients with a diagnosis of RA seen during the performance period. This measure may be submitted by Merit-based Incentive Payment System (MIPS) eligible clinicians who perform the quality actions described in the measure based on the services provided and the measure-specific denominator coding.

Measure Submission Type:
Measure data may be submitted by individual MIPS eligible clinicians, groups, or third party intermediaries. The listed denominator criteria are used to identify the intended patient population. The numerator options included in this specification are used to submit the quality actions as allowed by the measure. The quality data codes listed do not need to be submitted by MIPS eligible clinicians, groups, or third party intermediaries that utilize this modality for submissions; however, these codes may be submitted for those third party intermediaries that utilize Medicare Part B claims data. For more information regarding Application Programming Interface (API), please refer to the Quality Payment Program (QPP) website.

DENOMINATOR:
Patients aged 18 years and older with a diagnosis of RA

DENOMINATOR NOTE: *Signifies that this HCPCS code is a non-covered service under the Medicare Part B Physician Fee Schedule (PFS). These non-covered services should be counted in the denominator population for the MIPS CQMs.

Denominator Criteria (Eligible Cases):
Patients aged ≥ 18 years on date of encounter

AND

Diagnosis for rheumatoid arthritis (RA) (ICD-10-CM): M05.00, M05.011, M05.012, M05.019, M05.021, M05.022, M05.029, M05.031, M05.032, M05.039, M05.041, M05.042, M05.049, M05.051, M05.052, M05.059, M05.061, M05.062, M05.069, M05.071, M05.072, M05.079, M05.09, M05.10, M05.111, M05.112, M05.119, M05.121, M05.122, M05.129, M05.131, M05.132, M05.139, M05.141, M05.142, M05.149, M05.151, M05.152, M05.159, M05.161, M05.162, M05.169, M05.171, M05.172, M05.179, M05.19, M05.20, M05.211, M05.212, M05.219, M05.221, M05.222, M05.229, M05.231, M05.232, M05.239, M05.241, M05.242, M05.249, M05.251, M05.252, M05.259, M05.261, M05.262, M05.269, M05.271, M05.272, M05.279, M05.29, M05.30, M05.311, M05.312, M05.319, M05.321, M05.322, M05.329, M05.331, M05.332, M05.339, M05.341, M05.342, M05.349, M05.351, M05.352, M05.359, M05.361, M05.362, M05.369, M05.371, M05.372, M05.379, M05.39, M05.40, M05.411, M05.412, M05.419, M05.421, M05.422, M05.429, M05.431, M05.432, M05.439, M05.441, M05.442, M05.449, M05.451, M05.452, M05.459, M05.461, M05.462, M05.469, M05.471, M05.472, M05.479, M05.49, M05.50, M05.511, M05.512, M05.519, M05.521,

M05.522, M05.529, M05.531, M05.532, M05.539, M05.541, M05.542, M05.549, M05.551, M05.552, M05.559, M05.561, M05.562, M05.569, M05.571, M05.572, M05.579, M05.59, M05.60, M05.611, M05.612, M05.619, M05.621, M05.622, M05.629, M05.631, M05.632, M05.639, M05.641, M05.642, M05.649, M05.651, M05.652, M05.659, M05.661, M05.662, M05.669, M05.671, M05.672, M05.679, M05.69, M05.7A, M05.70, M05.711, M05.712, M05.719, M05.721, M05.722, M05.729, M05.731, M05.732, M05.739, M05.741, M05.742, M05.749, M05.751, M05.752, M05.759, M05.761, M05.762, M05.769, M05.771, M05.772, M05.779, M05.79, M05.8A, M05.80, M05.811, M05.812, M05.819, M05.821, M05.822, M05.829, M05.831, M05.832, M05.839, M05.841, M05.842, M05.849, M05.851, M05.852, M05.859, M05.861, M05.862, M05.869, M05.871, M05.872, M05.879, M05.89, M05.9, M06.0A, M06.00, M06.011, M06.012, M06.019, M06.021, M06.022, M06.029, M06.031, M06.032, M06.039, M06.041, M06.042, M06.049, M06.051, M06.052, M06.059, M06.061, M06.062, M06.069, M06.071, M06.072, M06.079, M06.08, M06.09, M06.20, M06.211, M06.212, M06.219, M06.221, M06.222, M06.229, M06.231, M06.232, M06.239, M06.241, M06.242, M06.249, M06.251, M06.252, M06.259, M06.261, M06.262, M06.269, M06.271, M06.272, M06.279, M06.28, M06.29, M06.30, M06.311, M06.312, M06.319, M06.321, M06.322, M06.329, M06.331, M06.332, M06.339, M06.341, M06.342, M06.349, M06.351, M06.352, M06.359, M06.361, M06.362, M06.369, M06.371, M06.372, M06.379, M06.38, M06.39, M06.8A, M06.80, M06.811, M06.812, M06.819, M06.821, M06.822, M06.829, M06.831, M06.832, M06.839, M06.841, M06.842, M06.849, M06.851, M06.852, M06.859, M06.861, M06.862, M06.869, M06.871, M06.872, M06.879, M06.88, M06.89, M06.9

AND

Patient encounter during the performance period (CPT or HCPCS): 99202, 99203, 99204, 99205, 99212, 99213, 99214, 99215, 99341, 99342, 99343, 99344, 99345, 99347, 99348, 99349, 99350, 99424, 99426, G0402, G0468*

WITHOUT

Telehealth Modifier: GQ, GT, 95, POS 02

NUMERATOR:

Patients with disease activity assessed by an ACR-preferred rheumatoid arthritis disease activity measurement tool ≥50% of total number of outpatient RA encounters in the measurement year

Definition:

Assessment of Disease Activity – Assesses if physicians are utilizing a standardized, systematic approach for evaluating the level of disease activity for each patient at least for ≥50% of total number of outpatient RA encounters. The scales/instruments listed are the ACR-preferred tools that should be used:

- Clinical Disease Activity Index (CDAI)
- Disease Activity Score with 28-joint counts (erythrocyte sedimentation rate or C-reactive protein) (DAS-28)
- Patient Activity Score-II (PAS-II)
- Routine Assessment of Patient Index Data with 3 measures (RAPID 3)
- Simplified Disease Activity Index (SDAI)

A result within the range of the selected tool qualifies for meeting numerator performance as long as a result is captured at ≥50% of each patient's qualified encounters.

Numerator Options:

Performance Met: ≥50% of total number of a patient's outpatient RA encounters assessed (**M1007**)

OR

Performance Not Met: Disease activity not assessed, reason not given (**M1006**)

OR

Performance Not Met: <50% of total number of a patient's outpatient RA encounters assessed (**M1008**)

RATIONALE:

After establishing a diagnosis of RA, risk assessment is crucial for guiding optimal treatment. For the purposes of selecting therapies, physicians should consider the patient's disease activity at the time of the treatment decisions.

CLINICAL RECOMMENDATION STATEMENTS:

The ACR guidelines for treating both early and established RA patients strongly recommend using a treat-to-target strategy, with the ideal target as low disease activity or remission, as determined by the clinician and the patient. In order to accomplish this, a key principle of the guideline states that disease activity measurement using an ACR-recommended measure should be performed in a majority of encounters for RA patients. (cite: Singh, J.A., Saag, K. G., Bridges, S. L., Akl. E. A., Bannuru, R. R., Sullivan, M. C., et al. (2016), 2015 American College of Rheumatology Guideline for the Treatment of Rheumatoid Arthritis. *Arthritis Care & Research*, 68: 1 -25. doi:10.1002/acr.22783) This is based on evidence showing that regular disease activity assessment facilitates achieving low disease activity states. (cite: Grigor C, Capell H, Stirling A, McMahon AD, Lock P, Vallance R, et al. Effect of a treatment strategy of tight control for rheumatoid arthritis (the TICORA study): a single blind randomised controlled trial. *Lancet* 2004;364:263 -9.) The ACR also conducted an extensive multi-year project, involving systematic literature reviews, expert consensus ratings, and national surveys to reach consensus on which RA disease activity measures are valid, reliable, and responsive, and feasible to implement in routine clinical practice, resulting in five ACR-preferred disease activity tools. (cite: <https://www.rheumatology.org/Portals/0/Files/2019-Update-ACR-Recommended-Rheumatoid-Arthritis-Disease-Activity-Measures.pdf>).

COPYRIGHT:

The Measures are not clinical guidelines, do not establish a standard of medical care, and have not been tested for all potential applications.

The Measures, while copyrighted, can be reproduced and distributed, without modification, for noncommercial purposes, e.g., for use by health care providers in connection with their practices.

Any commercial use of the Measures requires a license agreement between the user and the American College of Rheumatology (ACR). Commercial use is defined as the sale, license, or distribution of the Measures for commercial gain, or incorporation of the Measures into a product or service that is sold, licensed or distributed for commercial gain. Neither the ACR, nor its members shall be responsible for any use of the Measures.

The PCPI's and AMA's significant past efforts and contributions to the development and updating of the Measures are acknowledged. ACR is solely responsible for the review and enhancement ("Maintenance") of the Measures as of May 22, 2019.

ACR encourages use of the Measures by other health care professionals, where appropriate.

THE MEASURES AND SPECIFICATIONS ARE PROVIDED "AS IS" WITHOUT WARRANTY OF ANY KIND.

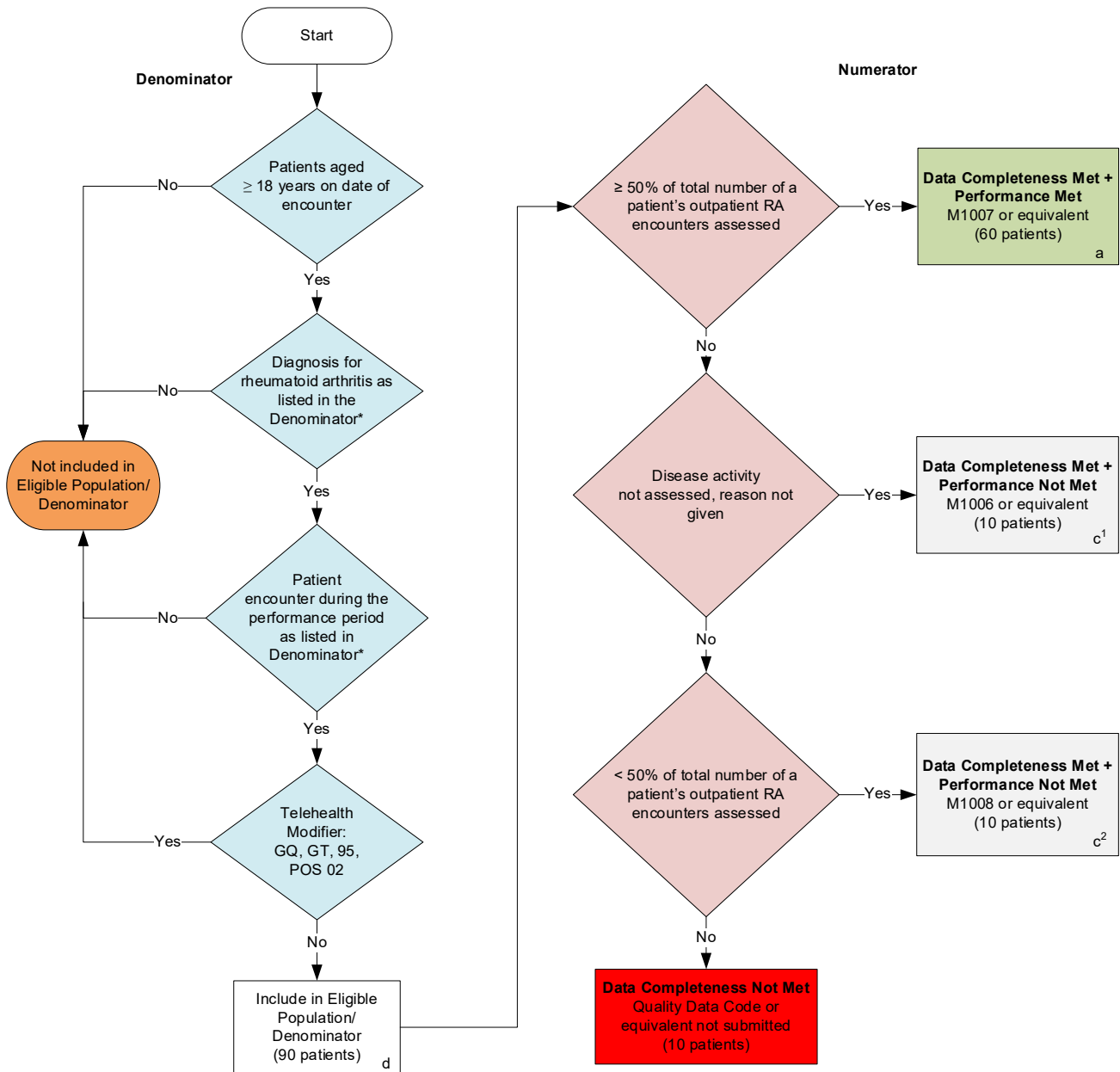
© 2014-2021 American College of Rheumatology. All Rights Reserved. Applicable FARS/DFARS Restrictions Apply to Government Use.

Limited proprietary coding may be contained in the Measure specifications for convenience. A license agreement must be entered prior to a third party's use of Current Procedural Terminology (CPT®) or other proprietary code set contained in the Measures. Any other use of CPT or other coding by the third party is strictly prohibited. ACR, the AMA, and former members of the PCPI disclaim all liability for use or accuracy of any CPT or other coding contained in the specifications.

CPT® contained in the Measure specifications is copyright 2004-2021 American Medical Association. LOINC® copyright 2004-2021 Regenstrief Institute, Inc. SNOMED CLINICAL TERMS (SNOMED CT®) copyright 2004-2021 International Health Terminology Standards Development Organisation. ICD-10 is copyright 2021 World Health Organization. All Rights Reserved.

2022 Clinical Quality Measure Flow for Quality ID #177 (NQF 2523): Rheumatoid Arthritis (RA): Periodic Assessment of Disease Activity

Disclaimer: Refer to the measure specification for specific coding and instructions to submit this measure.



SAMPLE CALCULATIONS

Data Completeness=

$$\frac{\text{Performance Met (a=60 patients) + Performance Not Met (c^1+c^2=20 patients)}}{\text{Eligible Population / Denominator (d=90 patients)}} = \frac{80 \text{ patients}}{90 \text{ patients}} = 88.89\%$$

Performance Rate=

$$\frac{\text{Performance Met (a=60 patients)}}{\text{Data Completeness Numerator (80 patients)}} = \frac{60 \text{ patients}}{80 \text{ patients}} = 75.00\%$$

*See the posted measure specification for specific coding and instructions to submit this measure.

NOTE: Submission Frequency: Patient-Process

CPT only copyright 2021 American Medical Association. All rights reserved. The measure diagrams were developed by CMS as a supplemental resource to be used in conjunction with the measure specifications. They should not be used alone or as a substitution for the measure specification.

v6

**2022 Clinical Quality Measure Flow Narrative for Quality ID #177 (NQF 2523):
Rheumatoid Arthritis (RA): Periodic Assessment of Disease Activity**

Disclaimer: Refer to the measure specification for specific coding and instructions to submit this measure.

1. Start with Denominator
2. Check *Patients aged greater than or equal to 18 years on date of encounter*.
 - a. If *Patients aged greater than or equal to 18 years on date of encounter* equals No, do not include in Eligible Population/Denominator. Stop processing.
 - b. If *Patients aged greater than or equal to 18 years on date of encounter* equals Yes, proceed to check *Diagnosis for rheumatoid arthritis as listed in the Denominator**.
3. Check *Diagnosis for rheumatoid arthritis as listed in the Denominator**:
 - a. If *Diagnosis for rheumatoid arthritis as listed in the Denominator** equals No, do not include in Eligible Population/Denominator. Stop processing.
 - b. If *Diagnosis for rheumatoid arthritis as listed in the Denominator** equals Yes, proceed to check *Patient encounter during the performance period as listed in Denominator**.
4. Check *Patient encounter during the performance period as listed in Denominator**:
 - a. If *Patient encounter during the performance period as listed in Denominator** equals No, do not include in Eligible Population/Denominator. Stop processing.
 - b. If *Patient encounter during the performance period as listed in Denominator** equals Yes, proceed to check *Telehealth Modifier*.
5. Check *Telehealth Modifier*.
 - a. If *Telehealth Modifier* equals Yes, do not include in Eligible Population/Denominator. Stop processing.
 - b. If *Telehealth Modifier* equals No, include in Eligible Population/Denominator.
6. Denominator Population:
 - Denominator Population is all Eligible Patients in the Denominator. Denominator is represented as Denominator in the Sample Calculation listed at the end of this document. Letter d equals 90 patients in the Sample Calculation.
7. Start Numerator
8. Check *Greater than or equal to 50 percent of total number of a patient's outpatient RA encounters assessed*:
 - a. If *Greater than or equal to 50 percent of total number of a patient's outpatient RA encounters assessed* equals Yes, include in *Data Completeness Met and Performance Met*.
 - *Data Completeness Met and Performance Met* letter is represented in the Data Completeness and Performance Rate in the Sample Calculation listed at the end of this document. Letter a equals 60 patients in the Sample Calculation.
 - b. If *Greater than or equal to 50 percent of total number of a patient's outpatient RA encounters*

assessed equals No, proceed to check *Disease activity not assessed, reason not given*.

9. Check *Disease activity not assessed, reason not given*:

a. If *Disease activity not assessed, reason not given* equals Yes, include in *Data Completeness Met and Performance Not Met*.

- *Data Completeness Met and Performance Not Met* letter is represented in the Data Completeness in the Sample Calculation listed at the end of this document. Letter c¹ equals 10 patients in the Sample Calculation

b. If *Disease activity not assessed, reason not given* equals No, proceed to check *Less than 50 percent of total number of a patient's outpatient RA encounters assessed*.

10. Check *Less than 50 percent of total number of a patient's outpatient RA encounters assessed*:

a. If *Less than 50 percent of total number of a patient's outpatient RA encounters assessed* equals Yes, include in *Data Completeness Met and Performance Not Met*.

- *Data Completeness Met and Performance Not Met* letter is represented in the Data Completeness in the Sample Calculation listed at the end of this document. Letter c² equals 10 patients in the Sample Calculation.

b. If *Less than 50 percent of total number of a patient's outpatient RA encounters assessed* equals No, proceed to check *Data Completeness Not Met*.

11. Check *Data Completeness Not Met*:

- If *Data Completeness Not Met*, the Quality Data Code or equivalent was not submitted. 10 patients have been subtracted from the Data Completeness Numerator in Sample Calculation.

Sample Calculations

Data Completeness equals Performance Met (a equals 60 patients) plus Performance Not Met (c¹ plus c² equals 20 patients) divided by Eligible Population / Denominator (d equals 90 patients). All equals 80 patients divided by 90 patients. All equals 88.89 percent.

Performance Rate equals Performance Met (a equals 60 patients) divided by Data Completeness Numerator (80 patients). All equals 60 patients divided by 80 patients. All equals 75.00 percent.

*See the posted measure specification for specific coding and instructions to submit this measure.

NOTE: Submission Frequency: Patient-Process

The measure diagrams were developed by CMS as a supplemental resource to be used in conjunction with the measure specifications. They should not be used alone or as a substitution for the measure specification.