

Quality ID #143 (CBE 0384): Oncology: Medical and Radiation – Pain Intensity Quantified

2026 COLLECTION TYPE:

MERIT-BASED INCENTIVE PAYMENT SYSTEM (MIPS) CLINICAL QUALITY MEASURE (COM)

MEASURE TYPE:

Process – High Priority

DESCRIPTION:

Percentage of patient visits, regardless of patient age, with a diagnosis of cancer currently receiving chemotherapy or radiation therapy in which pain intensity is quantified.

INSTRUCTIONS:

Reporting Frequency

This measure is to be submitted at each denominator eligible visit for denominator eligible cases as defined in the denominator criteria.

Intent and Clinician Applicability:

This measure is intended to reflect the quality of services provided for patients with a diagnosis of cancer. It is anticipated that Merit-based Incentive Payment System (MIPS) eligible clinicians providing care for patients with cancer will submit this measure.

Measure Strata and Performance Rates:

This measure contains two strata defined by two submission criteria.

This measure produces a single performance rate using a weighted average.

There are 2 Submission Criteria for this measure:

- 1) All patient visits for patients with a diagnosis of cancer currently receiving chemotherapy
- OR
- 2) All patient visits for patients with a diagnosis of cancer currently receiving radiation therapy

This measure produces a single performance rate.

Implementation Considerations:

For the purposes of MIPS implementation, this visit measure is submitted each time a patient has a denominator eligible encounter during the performance period.

For patients receiving radiation therapy, pain intensity should be quantified at each radiation treatment management encounter, where the patient and physician have a face-to-face interaction. Due to the nature of some applicable coding related to the radiation therapy (e.g., delivered in multiple fractions), the billing date for certain codes may or may not be the same as the face-to-face encounter date. In this instance, for the reporting purposes of this measure, the billing date should be used to pull the appropriate patients into the initial population. It is expected, though, that the numerator criteria would be performed at the time of the actual face-to-face encounter during the series of treatments. A lookback (retrospective) period of 7 days, including the billing date, may be used to identify the actual face-to-face encounter, which is required to assess the numerator. Therefore, pain intensity should be quantified during the face-to-face encounter occurring on the actual billing date or within the 6 days prior to the billing date.

For patients receiving chemotherapy, pain intensity should be quantified at each face-to-face or telehealth encounter with the physician while the patient is currently receiving chemotherapy. For purposes of identifying eligible encounters, patients “currently receiving chemotherapy” refers to patients administered chemotherapy on the same

day as the encounter or during the 30 days before the date of the encounter AND during the 30 days after the date of the encounter.

Telehealth:

SUBMISSION CRITERIA 1:

TELEHEALTH ELIGIBLE: This measure submission criteria is appropriate for and applicable to the telehealth setting. Patient encounters conducted via telehealth using encounter code(s) found in the denominator encounter criteria are allowed for this measure. Therefore, if the patient meets all denominator criteria for a telehealth encounter, it would be appropriate to include them in the denominator eligible patient population. Telehealth eligibility is at the measure submission criteria level for inclusion within the denominator eligible patient population and based on the measure specification definitions which are independent of changes to coding and/or billing practices.

SUBMISSION CRITERIA 2:

NOT TELEHEALTH ELIGIBLE: This measure submission criteria is not appropriate for nor applicable to the telehealth setting. This measure submission criteria is procedure based and therefore doesn't allow for the denominator criteria to be conducted via telehealth. It would be appropriate to remove these patients from the denominator eligible patient population. Telehealth eligibility is at the measure submission criteria level for inclusion within the denominator eligible patient population and based on the measure specification definitions which are independent of changes to coding and/or billing practices.

Measure Submission:

Measure data may be submitted by individual MIPS eligible clinicians, groups, or third-party intermediaries. The listed denominator criteria are used to identify the intended patient population. The numerator options included in this specification are used to submit the quality actions as allowed by the measure. The quality data codes listed do not need to be submitted by MIPS eligible clinicians, groups, or third-party intermediaries that utilize this modality for submissions; however, these codes may be submitted for those third-party intermediaries that utilize Medicare Part B claims data. For more information regarding Application Programming Interface (API), please refer to the Quality Payment Program (QPP) website.

SUBMISSION CRITERIA 1: ALL PATIENT VISITS FOR PATIENTS WITH A DIAGNOSIS OF CANCER CURRENTLY RECEIVING CHEMOTHERAPY

DENOMINATOR (SUBMISSION CRITERIA 1):

All patient visits, regardless of patient age, with a diagnosis of cancer currently receiving chemotherapy.

Denominator Instructions:

The two chemotherapy administrations must occur on different days within the timeframe of on or within 30 days before the denominator eligible encounter and on or within 30 days after the denominator eligible encounter. Two chemotherapy administrations performed on the same day will not meet the patient procedure requirement.

Denominator Criteria (Eligible Cases) 1:

Diagnosis for cancer (ICD-10-CM): C00.0, C00.1, C00.2, C00.3, C00.4, C00.5, C00.6, C00.8, C00.9, C01, C02.0, C02.1, C02.2, C02.3, C02.4, C02.8, C02.9, C03.0, C03.1, C03.9, C04.0, C04.1, C04.8, C04.9, C05.0, C05.1, C05.2, C05.8, C05.9, C06.0, C06.1, C06.2, C06.80, C06.89, C06.9, C07, C08.0, C08.1, C08.9, C09.0, C09.1, C09.8, C09.9, C10.0, C10.1, C10.2, C10.3, C10.4, C10.8, C10.9, C11.0, C11.1, C11.2, C11.3, C11.8, C11.9, C12, C13.0, C13.1, C13.2, C13.8, C13.9, C14.0, C14.2, C14.8, C15.3, C15.4, C15.5, C15.8, C15.9, C16.0, C16.1, C16.2, C16.3, C16.4, C16.5, C16.6, C16.8, C16.9, C17.0, C17.1, C17.2, C17.3, C17.8, C17.9, C18.0, C18.1, C18.2, C18.3, C18.4, C18.5, C18.6, C18.7, C18.8, C18.9, C19, C20, C21.0, C21.1, C21.2, C21.8, C22.0, C22.1, C22.2, C22.3, C22.4, C22.7, C22.8, C22.9, C23, C24.0, C24.1, C24.8, C24.9, C25.0, C25.1, C25.2, C25.3, C25.4, C25.7, C25.8, C25.9, C26.0, C26.1, C26.9, C30.0, C30.1, C31.0, C31.1, C31.2, C31.3, C31.8, C31.9, C32.0, C32.1, C32.2, C32.3, C32.8, C32.9, C33, C34.00, C34.01, C34.02, C34.10, C34.11, C34.12, C34.2, C34.30, C34.31, C34.32, C34.80, C34.81, C34.82, C34.90, C34.91, C34.92, C37, C38.0, C38.1, C38.2, C38.3, C38.4, C38.8, C39.0, C39.9, C40.00, C40.01, C40.02, C40.10, C40.11, C40.12, C40.20, C40.21, C40.22, C40.30,

C40.31, C40.32, C40.80, C40.81, C40.82, C40.90, C40.91, C40.92, C41.0, C41.1, C41.2, C41.3, C41.4, C41.9, C43.0, C43.10, C43.111, C43.112, C43.121, C43.122, C43.20, C43.21, C43.22, C43.30, C43.31, C43.39, C43.4, C43.51, C43.52, C43.59, C43.60, C43.61, C43.62, C43.70, C43.71, C43.72, C43.8, C43.9, C44.00, C44.01, C44.02, C44.09, C44.101, C44.1021, C44.1022, C44.1091, C44.1092, C44.111, C44.1121, C44.1122, C44.1191, C44.1192, C44.121, C44.1221, C44.1222, C44.1291, C44.1292, C44.131, C44.1321, C44.1322, C44.1391, C44.1392, C44.191, C44.1921, C44.1922, C44.1991, C44.1992, C44.201, C44.202, C44.209, C44.211, C44.212, C44.219, C44.221, C44.222, C44.229, C44.291, C44.292, C44.299, C44.300, C44.301, C44.309, C44.310, C44.311, C44.319, C44.320, C44.321, C44.329, C44.390, C44.391, C44.399, C44.40, C44.41, C44.42, C44.49, C44.500, C44.501, C44.509, C44.510, C44.511, C44.519, C44.520, C44.521, C44.529, C44.590, C44.591, C44.599, C44.601, C44.602, C44.609, C44.611, C44.612, C44.619, C44.621, C44.622, C44.629, C44.691, C44.692, C44.699, C44.701, C44.702, C44.709, C44.711, C44.712, C44.719, C44.721, C44.722, C44.729, C44.791, C44.792, C44.799, C44.80, C44.81, C44.82, C44.89, C44.90, C44.91, C44.92, C44.99, C45.0, C45.1, C45.2, C45.7, C45.9, C46.0, C46.1, C46.2, C46.3, C46.4, C46.50, C46.51, C46.52, C46.7, C46.9, C47.0, C47.10, C47.11, C47.12, C47.20, C47.21, C47.22, C47.3, C47.4, C47.5, C47.6, C47.8, C47.9, C48.0, C48.1, C48.2, C48.8, C49.0, C49.10, C49.11, C49.12, C49.20, C49.21, C49.22, C49.3, C49.4, C49.5, C49.6, C49.8, C49.9, C49.A0, C49.A1, C49.A2, C49.A3, C49.A4, C49.A5, C49.A9, C4A.0, C4A.10, C4A.111, C4A.112, C4A.121, C4A.122, C4A.20, C4A.21, C4A.22, C4A.30, C4A.31, C4A.39, C4A.4, C4A.51, C4A.52, C4A.59, C4A.60, C4A.61, C4A.62, C4A.70, C4A.71, C4A.72, C4A.8, C4A.9, C50.A0, C50.A1, C50.A2, C50.011, C50.012, C50.019, C50.021, C50.022, C50.029, C50.111, C50.112, C50.119, C50.121, C50.122, C50.129, C50.211, C50.212, C50.219, C50.221, C50.222, C50.229, C50.311, C50.312, C50.319, C50.321, C50.322, C50.329, C50.411, C50.412, C50.419, C50.421, C50.422, C50.429, C50.511, C50.512, C50.519, C50.521, C50.522, C50.529, C50.611, C50.612, C50.619, C50.621, C50.622, C50.629, C50.811, C50.812, C50.819, C50.821, C50.822, C50.829, C50.911, C50.912, C50.919, C50.921, C50.922, C50.929, C51.0, C51.1, C51.2, C51.8, C51.9, C52, C53.0, C53.1, C53.8, C53.9, C54.0, C54.1, C54.2, C54.3, C54.8, C54.9, C55, C56.1, C56.2, C56.3, C56.9, C57.00, C57.01, C57.02, C57.10, C57.11, C57.12, C57.20, C57.21, C57.22, C57.3, C57.4, C57.7, C57.8, C57.9, C58, C60.0, C60.1, C60.2, C60.8, C60.9, C61, C62.00, C62.01, C62.02, C62.10, C62.11, C62.12, C62.90, C62.91, C62.92, C63.00, C63.01, C63.02, C63.10, C63.11, C63.12, C63.2, C63.7, C63.8, C63.9, C64.1, C64.2, C64.9, C65.1, C65.2, C65.9, C66.1, C66.2, C66.9, C67.0, C67.1, C67.2, C67.3, C67.4, C67.5, C67.6, C67.7, C67.8, C67.9, C68.0, C68.1, C68.8, C68.9, C69.00, C69.01, C69.02, C69.10, C69.11, C69.12, C69.20, C69.21, C69.22, C69.30, C69.31, C69.32, C69.40, C69.41, C69.42, C69.50, C69.51, C69.52, C69.60, C69.61, C69.62, C69.80, C69.81, C69.82, C69.90, C69.91, C69.92, C70.0, C70.1, C70.9, C71.0, C71.1, C71.2, C71.3, C71.4, C71.5, C71.6, C71.7, C71.8, C71.9, C72.0, C72.1, C72.20, C72.21, C72.22, C72.30, C72.31, C72.32, C72.40, C72.41, C72.42, C72.50, C72.59, C72.9, C73, C74.00, C74.01, C74.02, C74.10, C74.11, C74.12, C74.90, C74.91, C74.92, C75.0, C75.1, C75.2, C75.3, C75.4, C75.5, C75.8, C75.9, C76.0, C76.1, C76.2, C76.3, C76.40, C76.41, C76.42, C76.50, C76.51, C76.52, C76.8, C77.0, C77.1, C77.2, C77.3, C77.4, C77.5, C77.8, C77.9, C78.00, C78.01, C78.02, C78.1, C78.2, C78.30, C78.39, C78.4, C78.5, C78.6, C78.7, C78.80, C78.89, C79.00, C79.01, C79.02, C79.10, C79.11, C79.19, C79.2, C79.31, C79.32, C79.40, C79.49, C79.51, C79.52, C79.60, C79.61, C79.62, C79.63, C79.70, C79.71, C79.72, C79.81, C79.82, C79.89, C79.9, C7A.00, C7A.010, C7A.011, C7A.012, C7A.019, C7A.020, C7A.021, C7A.022, C7A.023, C7A.024, C7A.025, C7A.026, C7A.029, C7A.090, C7A.091, C7A.092, C7A.093, C7A.094, C7A.095, C7A.096, C7A.098, C7A.1, C7A.8, C7B.00, C7B.01, C7B.02, C7B.03, C7B.04, C7B.09, C7B.1, C7B.8, C80.0, C80.1, C80.2, C81.00, C81.01, C81.02, C81.03, C81.04, C81.05, C81.06, C81.07, C81.08, C81.09, C81.10, C81.11, C81.12, C81.13, C81.14, C81.15, C81.16, C81.17, C81.18, C81.19, C81.20, C81.21, C81.22, C81.23, C81.24, C81.25, C81.26, C81.27, C81.28, C81.29, C81.30, C81.31, C81.32, C81.33, C81.34, C81.35, C81.36, C81.37, C81.38, C81.39, C81.40, C81.41, C81.42, C81.43, C81.44, C81.45, C81.46, C81.47, C81.48, C81.49, C81.70, C81.71, C81.72, C81.73, C81.74, C81.75, C81.76, C81.77, C81.78, C81.79, C81.90, C81.91, C81.92, C81.93, C81.94, C81.95, C81.96, C81.97, C81.98, C81.99, C82.00, C82.01, C82.02, C82.03, C82.04, C82.05, C82.06, C82.07, C82.08, C82.09, C82.10, C82.11, C82.12, C82.13, C82.14, C82.15, C82.16, C82.17, C82.18, C82.19, C82.20, C82.21, C82.22, C82.23, C82.24, C82.25, C82.26, C82.27, C82.28, C82.29, C82.30, C82.31, C82.32, C82.33, C82.34, C82.35, C82.36, C82.37, C82.38, C82.39, C82.40, C82.41, C82.42, C82.43, C82.44, C82.45, C82.46, C82.47, C82.48, C82.49, C82.50, C82.51, C82.52, C82.53, C82.54, C82.55, C82.56, C82.57, C82.58, C82.59, C82.60, C82.61, C82.62, C82.63, C82.64, C82.65, C82.66, C82.67, C82.68, C82.69, C82.80, C82.81, C82.82, C82.83, C82.84, C82.85, C82.86, C82.87, C82.88, C82.89, C82.90, C82.91, C82.92, C82.93, C82.94, C82.95, C82.96, C82.97, C82.98, C82.99, C83.00, C83.01,

C83.02, C83.03, C83.04, C83.05, C83.06, C83.07, C83.08, C83.09, C83.10, C83.11, C83.12, C83.13, C83.14, C83.15, C83.16, C83.17, C83.18, C83.19, C83.30, C83.31, C83.32, C83.33, C83.34, C83.35, C83.36, C83.37, C83.38, C83.390, C83.398, C83.50, C83.51, C83.52, C83.53, C83.54, C83.55, C83.56, C83.57, C83.58, C83.59, C83.70, C83.71, C83.72, C83.73, C83.74, C83.75, C83.76, C83.77, C83.78, C83.79, C83.80, C83.81, C83.82, C83.83, C83.84, C83.85, C83.86, C83.87, C83.88, C83.89, C83.90, C83.91, C83.92, C83.93, C83.94, C83.95, C83.96, C83.97, C83.98, C83.99, C84.00, C84.01, C84.02, C84.03, C84.04, C84.05, C84.06, C84.07, C84.08, C84.09, C84.10, C84.11, C84.12, C84.13, C84.14, C84.15, C84.16, C84.17, C84.18, C84.19, C84.40, C84.41, C84.42, C84.43, C84.44, C84.45, C84.46, C84.47, C84.48, C84.49, C84.60, C84.61, C84.62, C84.63, C84.64, C84.65, C84.66, C84.67, C84.68, C84.69, C84.7A, C84.70, C84.71, C84.72, C84.73, C84.74, C84.75, C84.76, C84.77, C84.78, C84.79, C84.90, C84.91, C84.92, C84.93, C84.94, C84.95, C84.96, C84.97, C84.98, C84.99, C84.A0, C84.A1, C84.A2, C84.A3, C84.A4, C84.A5, C84.A6, C84.A7, C84.A8, C84.A9, C84.Z0, C84.Z1, C84.Z2, C84.Z3, C84.Z4, C84.Z5, C84.Z6, C84.Z7, C84.Z8, C84.Z9, C85.10, C85.11, C85.12, C85.13, C85.14, C85.15, C85.16, C85.17, C85.18, C85.19, C85.20, C85.21, C85.22, C85.23, C85.24, C85.25, C85.26, C85.27, C85.28, C85.29, C85.80, C85.81, C85.82, C85.83, C85.84, C85.85, C85.86, C85.87, C85.88, C85.89, C85.90, C85.91, C85.92, C85.93, C85.94, C85.95, C85.96, C85.97, C85.98, C85.99, C86.00, C86.10, C86.20, C86.30, C86.40, C86.50, C86.60, C88.00, C88.20, C88.30, C88.40, C88.80, C88.90, C90.00, C90.01, C90.02, C90.10, C90.11, C90.12, C90.20, C90.21, C90.22, C90.30, C90.31, C90.32, C91.00, C91.01, C91.02, C91.10, C91.11, C91.12, C91.30, C91.31, C91.32, C91.40, C91.41, C91.42, C91.50, C91.51, C91.52, C91.60, C91.61, C91.62, C91.90, C91.91, C91.92, C91.A0, C91.A1, C91.A2, C91.Z0, C91.Z1, C91.Z2, C92.00, C92.01, C92.02, C92.10, C92.11, C92.12, C92.20, C92.21, C92.22, C92.30, C92.31, C92.32, C92.40, C92.41, C92.42, C92.50, C92.51, C92.52, C92.60, C92.61, C92.62, C92.90, C92.91, C92.92, C92.A0, C92.A1, C92.A2, C92.Z0, C92.Z1, C92.Z2, C93.00, C93.01, C93.02, C93.10, C93.11, C93.12, C93.30, C93.31, C93.32, C93.90, C93.91, C93.92, C93.Z0, C93.Z1, C93.Z2, C94.00, C94.01, C94.02, C94.20, C94.21, C94.22, C94.30, C94.31, C94.32, C94.40, C94.41, C94.42, C94.6, C94.80, C94.81, C94.82, C95.00, C95.01, C95.02, C95.10, C95.11, C95.12, C95.90, C95.91, C95.92, C96.0, C96.20, C96.21, C96.22, C96.29, C96.4, C96.5, C96.6, C96.9, C96.A, C96.Z, D37.01, D37.02, D37.030, D37.031, D37.032, D37.039, D37.04, D37.05, D37.09, D37.1, D37.2, D37.3, D37.4, D37.5, D37.6, D37.8, D37.9, D38.0, D38.1, D38.2, D38.3, D38.4, D38.5, D38.6, D39.0, D39.10, D39.11, D39.12, D39.2, D39.8, D39.9, D40.0, D40.10, D40.11, D40.12, D40.8, D40.9, D41.00, D41.01, D41.02, D41.10, D41.11, D41.12, D41.20, D41.21, D41.22, D41.3, D41.4, D41.8, D41.9, D42.0, D42.1, D42.9, D43.0, D43.1, D43.2, D43.3, D43.4, D43.8, D43.9, D44.0, D44.10, D44.11, D44.12, D44.2, D44.3, D44.4, D44.5, D44.6, D44.7, D44.9, D45, D46.0, D46.1, D46.20, D46.21, D46.22, D46.4, D46.9, D46.A, D46.B, D46.C, D46.Z, D47.1, D47.2, D47.3, D47.4, D47.9, D47.01, D47.02, D47.09, D47.Z1, D47.Z2, D47.Z9, D48.0, D48.19, D48.2, D48.3, D48.4, D48.5, D48.60, D48.61, D48.62, D48.7, D48.9, D49.0, D49.1, D49.2, D49.3, D49.4, D49.511, D49.512, D49.519, D49.59, D49.6, D49.7, D49.81, D49.89, D49.9

AND

Patient encounter during the performance period (CPT) – to be used to evaluate remaining denominator criteria and for numerator evaluation: 98000, 98001, 98002, 98003, 98004, 98005, 98006, 98007, 99202, 99203, 99204, 99205, 99212, 99213, 99214, 99215

AND

Patient procedure on or within 30 days before denominator eligible encounter: 50391, 51720, 96401, 96405, 96406, 96409, 96413, 96416, 96420, 96422, 96425, 96440, 96446, 96450, 96521, 96522, 96523, 96542, 96549, G0498

OR

Patient on oral chemotherapy on or within 30 days before denominator eligible encounter: M1433

AND

Patient procedure on or within 30 days after denominator eligible encounter: 50391, 51720, 96401, 96405, 96406, 96409, 96413, 96416, 96420, 96422, 96425, 96440, 96446, 96450, 96521, 96522, 96523, 96542, 96549, G0498

OR

Patient on oral chemotherapy on or within 30 days after denominator eligible encounter: M1434

NUMERATOR (SUBMISSION CRITERIA 1):

Patient visits in which pain intensity is quantified

Numerator Instructions:

Pain intensity should be quantified using a standard instrument, such as a 0-10 numerical rating scale, visual analog scale, a categorical scale, or the pictorial scale. Examples include the Faces Pain Rating Scale and the Brief Pain Inventory (BPI).

Numerator Options:

Performance Met:

Pain severity quantified; pain present (1125F)

OR

Performance Met:

Pain severity quantified; no pain present (1126F)

OR

Performance Not Met:

Pain severity not documented, reason not otherwise specified (1125F *with* 8P)

OR

SUBMISSION CRITERIA 2: ALL PATIENT VISITS FOR PATIENTS WITH A DIAGNOSIS OF CANCER CURRENTLY RECEIVING RADIATION THERAPY

DENOMINATOR (CRITERIA 2):

All patient visits, regardless of patient age, with a diagnosis of cancer currently receiving radiation therapy.

DENOMINATOR NOTE:

*For the reporting purposes for this measure, in instances where CPT code 77427 is reported, the billing date, which may or may not be the same date as the face-to-face encounter with the physician, should be used to pull the appropriate patient population into the denominator. It is expected, though, that the numerator criteria would be performed at the time of the actual face-to-face encounter during the series of treatments. A lookback (retrospective) period of 7 days, including the billing date, may be used to identify the actual **face-to-face encounter**, which is required to assess the numerator. Therefore, pain intensity should be quantified during the face-to-face encounter occurring on the actual billing date or within the 6 days prior to the billing date.*

Denominator Criteria (Eligible Cases) 2:

Diagnosis for cancer (ICD-10-CM): C00.0, C00.1, C00.2, C00.3, C00.4, C00.5, C00.6, C00.8, C00.9, C01, C02.0, C02.1, C02.2, C02.3, C02.4, C02.8, C02.9, C03.0, C03.1, C03.9, C04.0, C04.1, C04.8, C04.9, C05.0, C05.1, C05.2, C05.8, C05.9, C06.0, C06.1, C06.2, C06.80, C06.89, C06.9, C07, C08.0, C08.1, C08.9, C09.0, C09.1, C09.8, C09.9, C10.0, C10.1, C10.2, C10.3, C10.4, C10.8, C10.9, C11.0, C11.1, C11.2, C11.3, C11.8, C11.9, C12, C13.0, C13.1, C13.2, C13.8, C13.9, C14.0, C14.2, C14.8, C15.3, C15.4, C15.5, C15.8, C15.9, C16.0, C16.1, C16.2, C16.3, C16.4, C16.5, C16.6, C16.8, C16.9, C17.0, C17.1, C17.2, C17.3, C17.8, C17.9, C18.0, C18.1, C18.2, C18.3, C18.4, C18.5, C18.6, C18.7, C18.8, C18.9, C19, C20, C21.0, C21.1, C21.2, C21.8, C22.0, C22.1, C22.2, C22.3, C22.4, C22.7, C22.8, C22.9, C23, C24.0, C24.1, C24.8, C24.9, C25.0, C25.1, C25.2, C25.3, C25.4, C25.7, C25.8, C25.9, C26.0, C26.1, C26.9, C30.0, C30.1, C31.0, C31.1, C31.2, C31.3, C31.8, C31.9, C32.0, C32.1, C32.2, C32.3, C32.8, C32.9, C33, C34.00, C34.01, C34.02, C34.10, C34.11, C34.12, C34.2, C34.30, C34.31, C34.32, C34.80, C34.81, C34.82, C34.90, C34.91, C34.92, C37, C38.0, C38.1, C38.2, C38.3, C38.4, C38.8, C39.0, C39.9, C40.00, C40.01, C40.02, C40.10, C40.11, C40.12, C40.20, C40.21, C40.22, C40.30, C40.31, C40.32, C40.80, C40.81, C40.82, C40.90, C40.91, C40.92, C41.0, C41.1, C41.2, C41.3, C41.4, C41.9, C43.0, C43.10, C43.11, C43.112, C43.121, C43.122, C43.20, C43.21, C43.22, C43.30, C43.31, C43.39, C43.4, C43.51, C43.52, C43.59, C43.60, C43.61, C43.62, C43.70, C43.71, C43.72, C43.8, C43.9, C44.00, C44.01, C44.02, C44.09, C44.101, C44.1021, C44.1022, C44.1091, C44.1092, C44.111, C44.1121, C44.1122, C44.1191, C44.1192, C44.121, C44.1221, C44.1222, C44.1291, C44.1292, C44.131, C44.1321, C44.1322, C44.1391, C44.1392, C44.191, C44.1921, C44.1922, C44.1991, C44.1992, C44.201, C44.202, C44.209, C44.211, C44.212, C44.219, C44.221, C44.222, C44.229, C44.291, C44.292, C44.299, C44.300, C44.301, C44.309, C44.310, C44.311, C44.319, C44.320, C44.321, C44.329, C44.390, C44.391, C44.399, C44.40, C44.41, C44.42, C44.49, C44.500, C44.501, C44.509, C44.510, C44.511, C44.519, C44.520, C44.521, C44.529, C44.590, C44.591, C44.599, C44.601, C44.602, C44.609, C44.611,

C44.612, C44.619, C44.621, C44.622, C44.629, C44.691, C44.692, C44.699, C44.701, C44.702, C44.709, C44.711, C44.712, C44.719, C44.721, C44.722, C44.729, C44.791, C44.792, C44.799, C44.80, C44.81, C44.82, C44.89, C44.90, C44.91, C44.92, C44.99, C45.0, C45.1, C45.2, C45.7, C45.9, C46.0, C46.1, C46.2, C46.3, C46.4, C46.50, C46.51, C46.52, C46.7, C46.9, C47.0, C47.10, C47.11, C47.12, C47.20, C47.21, C47.22, C47.3, C47.4, C47.5, C47.6, C47.8, C47.9, C48.0, C48.1, C48.2, C48.8, C49.0, C49.10, C49.11, C49.12, C49.20, C49.21, C49.22, C49.3, C49.4, C49.5, C49.6, C49.8, C49.9, C49.A0, C49.A1, C49.A2, C49.A3, C49.A4, C49.A5, C49.A9, C4A.0, C4A.10, C4A.111, C4A.112, C4A.121, C4A.122, C4A.20, C4A.21, C4A.22, C4A.30, C4A.31, C4A.39, C4A.4, C4A.51, C4A.52, C4A.59, C4A.60, C4A.61, C4A.62, C4A.70, C4A.71, C4A.72, C4A.8, C4A.9, C50.A0, C50.A1, C50.A2, C50.011, C50.012, C50.019, C50.021, C50.022, C50.029, C50.111, C50.112, C50.119, C50.121, C50.122, C50.129, C50.211, C50.212, C50.219, C50.221, C50.222, C50.229, C50.311, C50.312, C50.319, C50.321, C50.322, C50.329, C50.411, C50.412, C50.419, C50.421, C50.422, C50.429, C50.511, C50.512, C50.519, C50.521, C50.522, C50.529, C50.611, C50.612, C50.619, C50.621, C50.622, C50.629, C50.811, C50.812, C50.819, C50.821, C50.822, C50.829, C50.911, C50.912, C50.919, C50.921, C50.922, C50.929, C51.0, C51.1, C51.2, C51.8, C51.9, C52, C53.0, C53.1, C53.8, C53.9, C54.0, C54.1, C54.2, C54.3, C54.8, C54.9, C55, C56.1, C56.2, C56.3, C56.9, C57.00, C57.01, C57.02, C57.10, C57.11, C57.12, C57.20, C57.21, C57.22, C57.3, C57.4, C57.7, C57.8, C57.9, C58, C60.0, C60.1, C60.2, C60.8, C60.9, C61, C62.00, C62.01, C62.02, C62.10, C62.11, C62.12, C62.90, C62.91, C62.92, C63.00, C63.01, C63.02, C63.10, C63.11, C63.12, C63.2, C63.7, C63.8, C63.9, C64.1, C64.2, C64.9, C65.1, C65.2, C65.9, C66.1, C66.2, C66.9, C67.0, C67.1, C67.2, C67.3, C67.4, C67.5, C67.6, C67.7, C67.8, C67.9, C68.0, C68.1, C68.8, C68.9, C69.00, C69.01, C69.02, C69.10, C69.11, C69.12, C69.20, C69.21, C69.22, C69.30, C69.31, C69.32, C69.40, C69.41, C69.42, C69.50, C69.51, C69.52, C69.60, C69.61, C69.62, C69.80, C69.81, C69.82, C69.90, C69.91, C69.92, C70.0, C70.1, C70.9, C71.0, C71.1, C71.2, C71.3, C71.4, C71.5, C71.6, C71.7, C71.8, C71.9, C72.0, C72.1, C72.20, C72.21, C72.22, C72.30, C72.31, C72.32, C72.40, C72.41, C72.42, C72.50, C72.59, C72.9, C73, C74.00, C74.01, C74.02, C74.10, C74.11, C74.12, C74.90, C74.91, C74.92, C75.0, C75.1, C75.2, C75.3, C75.4, C75.5, C75.8, C75.9, C76.0, C76.1, C76.2, C76.3, C76.40, C76.41, C76.42, C76.50, C76.51, C76.52, C76.8, C77.0, C77.1, C77.2, C77.3, C77.4, C77.5, C77.8, C77.9, C78.00, C78.01, C78.02, C78.1, C78.2, C78.30, C78.39, C78.4, C78.5, C78.6, C78.7, C78.80, C78.89, C79.00, C79.01, C79.02, C79.10, C79.11, C79.19, C79.2, C79.31, C79.32, C79.40, C79.49, C79.51, C79.52, C79.60, C79.61, C79.62, C79.63, C79.70, C79.71, C79.72, C79.81, C79.82, C79.89, C79.9, C7A.00, C7A.010, C7A.011, C7A.012, C7A.019, C7A.020, C7A.021, C7A.022, C7A.023, C7A.024, C7A.025, C7A.026, C7A.029, C7A.090, C7A.091, C7A.092, C7A.093, C7A.094, C7A.095, C7A.096, C7A.098, C7A.1, C7A.8, C7B.00, C7B.01, C7B.02, C7B.03, C7B.04, C7B.09, C7B.1, C7B.8, C80.0, C80.1, C80.2, C81.00, C81.01, C81.02, C81.03, C81.04, C81.05, C81.06, C81.07, C81.08, C81.09, C81.10, C81.11, C81.12, C81.13, C81.14, C81.15, C81.16, C81.17, C81.18, C81.19, C81.20, C81.21, C81.22, C81.23, C81.24, C81.25, C81.26, C81.27, C81.28, C81.29, C81.30, C81.31, C81.32, C81.33, C81.34, C81.35, C81.36, C81.37, C81.38, C81.39, C81.40, C81.41, C81.42, C81.43, C81.44, C81.45, C81.46, C81.47, C81.48, C81.49, C81.70, C81.71, C81.72, C81.73, C81.74, C81.75, C81.76, C81.77, C81.78, C81.79, C81.90, C81.91, C81.92, C81.93, C81.94, C81.95, C81.96, C81.97, C81.98, C81.99, C82.00, C82.01, C82.02, C82.03, C82.04, C82.05, C82.06, C82.07, C82.08, C82.09, C82.10, C82.11, C82.12, C82.13, C82.14, C82.15, C82.16, C82.17, C82.18, C82.19, C82.20, C82.21, C82.22, C82.23, C82.24, C82.25, C82.26, C82.27, C82.28, C82.29, C82.30, C82.31, C82.32, C82.33, C82.34, C82.35, C82.36, C82.37, C82.38, C82.39, C82.40, C82.41, C82.42, C82.43, C82.44, C82.45, C82.46, C82.47, C82.48, C82.49, C82.50, C82.51, C82.52, C82.53, C82.54, C82.55, C82.56, C82.57, C82.58, C82.59, C82.60, C82.61, C82.62, C82.63, C82.64, C82.65, C82.66, C82.67, C82.68, C82.69, C82.80, C82.81, C82.82, C82.83, C82.84, C82.85, C82.86, C82.87, C82.88, C82.89, C82.90, C82.91, C82.92, C82.93, C82.94, C82.95, C82.96, C82.97, C82.98, C82.99, C83.00, C83.01, C83.02, C83.03, C83.04, C83.05, C83.06, C83.07, C83.08, C83.09, C83.10, C83.11, C83.12, C83.13, C83.14, C83.15, C83.16, C83.17, C83.18, C83.19, C83.30, C83.31, C83.32, C83.33, C83.34, C83.35, C83.36, C83.37, C83.38, C83.390, C83.398, C83.50, C83.51, C83.52, C83.53, C83.54, C83.55, C83.56, C83.57, C83.58, C83.59, C83.70, C83.71, C83.72, C83.73, C83.74, C83.75, C83.76, C83.77, C83.78, C83.79, C83.80, C83.81, C83.82, C83.83, C83.84, C83.85, C83.86, C83.87, C83.88, C83.89, C83.90, C83.91, C83.92, C83.93, C83.94, C83.95, C83.96, C83.97, C83.98, C83.99, C84.00, C84.01, C84.02, C84.03, C84.04, C84.05, C84.06, C84.07, C84.08, C84.09, C84.10, C84.11, C84.12, C84.13, C84.14, C84.15, C84.16, C84.17, C84.18, C84.19, C84.40, C84.41, C84.42, C84.43, C84.44, C84.45, C84.46, C84.47, C84.48, C84.49, C84.60, C84.61, C84.62, C84.63, C84.64, C84.65, C84.66, C84.67, C84.68, C84.69, C84.7A, C84.70, C84.71, C84.72,

C84.73, C84.74, C84.75, C84.76, C84.77, C84.78, C84.79, C84.90, C84.91, C84.92, C84.93, C84.94, C84.95, C84.96, C84.97, C84.98, C84.99, C84.A0, C84.A1, C84.A2, C84.A3, C84.A4, C84.A5, C84.A6, C84.A7, C84.A8, C84.A9, C84.Z0, C84.Z1, C84.Z2, C84.Z3, C84.Z4, C84.Z5, C84.Z6, C84.Z7, C84.Z8, C84.Z9, C85.10, C85.11, C85.12, C85.13, C85.14, C85.15, C85.16, C85.17, C85.18, C85.19, C85.20, C85.21, C85.22, C85.23, C85.24, C85.25, C85.26, C85.27, C85.28, C85.29, C85.80, C85.81, C85.82, C85.83, C85.84, C85.85, C85.86, C85.87, C85.88, C85.89, C85.90, C85.91, C85.92, C85.93, C85.94, C85.95, C85.96, C85.97, C85.98, C85.99, C86.00, C86.10, C86.20, C86.30, C86.40, C86.50, C86.60, C88.00, C88.20, C88.30, C88.40, C88.80, C88.90, C90.00, C90.01, C90.02, C90.10, C90.11, C90.12, C90.20, C90.21, C90.22, C90.30, C90.31, C90.32, C91.00, C91.01, C91.02, C91.10, C91.11, C91.12, C91.30, C91.31, C91.32, C91.40, C91.41, C91.42, C91.50, C91.51, C91.52, C91.60, C91.61, C91.62, C91.90, C91.91, C91.92, C91.A0, C91.A1, C91.A2, C91.Z0, C91.Z1, C91.Z2, C92.00, C92.01, C92.02, C92.10, C92.11, C92.12, C92.20, C92.21, C92.22, C92.30, C92.31, C92.32, C92.40, C92.41, C92.42, C92.50, C92.51, C92.52, C92.60, C92.61, C92.62, C92.90, C92.91, C92.92, C92.A0, C92.A1, C92.A2, C92.Z0, C92.Z1, C92.Z2, C93.00, C93.01, C93.02, C93.10, C93.11, C93.12, C93.30, C93.31, C93.32, C93.90, C93.91, C93.92, C93.Z0, C93.Z1, C93.Z2, C94.00, C94.01, C94.02, C94.20, C94.21, C94.22, C94.30, C94.31, C94.32, C94.40, C94.41, C94.42, C94.6, C94.80, C94.81, C94.82, C95.00, C95.01, C95.02, C95.10, C95.11, C95.12, C95.90, C95.91, C95.92, C96.0, C96.20, C96.21, C96.22, C96.29, C96.4, C96.5, C96.6, C96.9, C96.A, C96.Z, D37.01, D37.02, D37.030, D37.031, D37.032, D37.039, D37.04, D37.05, D37.09, D37.1, D37.2, D37.3, D37.4, D37.5, D37.6, D37.8, D37.9, D38.0, D38.1, D38.2, D38.3, D38.4, D38.5, D38.6, D39.0, D39.10, D39.11, D39.12, D39.2, D39.8, D39.9, D40.0, D40.10, D40.11, D40.12, D40.8, D40.9, D41.00, D41.01, D41.02, D41.10, D41.11, D41.12, D41.20, D41.21, D41.22, D41.3, D41.4, D41.8, D41.9, D42.0, D42.1, D42.9, D43.0, D43.1, D43.2, D43.3, D43.4, D43.8, D43.9, D44.0, D44.10, D44.11, D44.12, D44.2, D44.3, D44.4, D44.5, D44.6, D44.7, D44.9, D45, D46.0, D46.1, D46.20, D46.21, D46.22, D46.4, D46.9, D46.A, D46.B, D46.C, D46.Z, D47.1, D47.2, D47.3, D47.4, D47.9, D47.01, D47.02, D47.09, D47.Z1, D47.Z2, D47.Z9, D48.0, D48.19, D48.2, D48.3, D48.4, D48.5, D48.60, D48.61, D48.62, D48.7, D48.9, D49.0, D49.1, D49.2, D49.3, D49.4, D49.511, D49.512, D49.519, D49.59, D49.6, D49.7, D49.81, D49.89, D49.9

AND

Patient encounter during the performance period (CPT) – Radiation Treatment Management

codes: 77427, 77431, 77432, 77435

WITHOUT

Encounters conducted via telehealth: M1426

NUMERATOR (CRITERIA 2):

Patient visits in which pain intensity is quantified.

Numerator Instructions:

Pain intensity should be quantified using a standard instrument, such as a 0-10 numerical rating scale, visual analog scale, a categorical scale, or pictorial scale. Examples include the Faces Pain Rating Scale and the Brief Pain Inventory (BPI).

Numerator Options:

Performance Met:

Pain severity quantified; pain present (1125F)

OR

Performance Met:

Pain severity quantified; no pain present (1126F)

OR

Performance Not Met:

Pain severity not documented, reason not otherwise specified (1125F **with 8P**)

RATIONALE:

Pain is a commonly occurring symptom for cancer patients as 30% to 50% (510,000 to 850,000 each year based on current statistics) will experience moderate to severe pain (Wiffen, Wee, Derry, Bell, & Moore, 2017). Initial and ongoing pain assessments are essential to determine the pathophysiology of pain and ensure proper pain management. According to the National Comprehensive Cancer Network (National Comprehensive Cancer

Network (NCCN), 2024), undertreatment of pain remains a problem among a significant subset of cancer patients, survival is linked with symptom control and pain management, and pain management contributes to broad quality of life improvement. Furthermore, NCCN notes that formal pain reevaluation is required at each contact to ensure that pain management therapies are successfully meeting patient-specific goals for comfort, function, and safety. Cancer patients have reported that pain interferes with their mood, work, relationships with other people, sleep and overall enjoyment of life (Moryl, et al., 2018). Pain management is an essential part of oncologic management and contributes to a patient's overall function and quality of life (National Comprehensive Cancer Network (NCCN), 2024).

A recent analysis of registry data for chronic pain cancer patients found average pain intensity reported as mild (24.6% of patients), moderate (41.5%), and severe (33.9%). The study also indicated that patient report of pain relief is inversely related to the average pain intensity reported (Moryl, et al., 2018). These data suggest that assessing and managing a cancer patient's pain is critical and there remains significant room for improvement in assessing and mitigating cancer-related pain. A prospective study of changes in pain severity of cancer patients found that, at initial assessment, 47% of patients reported pain. At follow-up, the patients with pain at initial assessment reported reduced pain (32.2%), stable pain (48.2%) and worse pain (19.6%). Of the 53% of patients reporting no pain at initial assessment, 82.6% reported stable pain and 17.4% reported worse pain at follow-up assessment (Zhao, et al., 2014). This study highlights the importance of initial and ongoing assessments of pain to identify gaps and ensure proper pain management.

CLINICAL RECOMMENDATION STATEMENTS:

Screen all patients for pain at each contact.

Routinely quantify and document pain intensity and quality as characterized by the patient (whenever possible). Include patient reporting of breakthrough pain, treatments used and their impact on pain, satisfaction with pain relief, pain interference, provider assessment of impact on function, and any special issues for the patient relevant to pain treatment and access to care. If necessary, get additional information from caregiver regarding pain and impact on function.

Perform comprehensive pain assessment if new or worsening pain is present and regularly for persisting pain. Various methods and tools exist to assess pain severity. Intensity of pain should be quantified using a numerical rating scale (i.e., 0-10), visual analog scale, categorical scale, or pictorial scale (e.g., The Faces Pain Rating Scale) (Category 2A) (National Comprehensive Cancer Network (NCCN), 2024).

REFERENCES:

- Moryl, N., Dave, V., Glare, P., Bokhari, A., Malhotra, V. T., Gulati, A., & Inturrisi, C. E. (2018). Patient-Reported Outcomes and Opioid Use by Outpatient Cancer Patients. *The Journal of Pain: Official Journal of the American Pain Society*, 19(3), 278 - 290. doi:10.1016/j.jpain.2017.11.001
- National Comprehensive Cancer Network (NCCN). (2024). *NCCN Clinical Practice Guidelines in Oncology. Adult Cancer Pain Version 2.2024*. Plymouth Meeting: NCCN Clinical Practice Guidelines in Oncology.
- Wiffen, P. J., Wee, B., Derry, S., Bell, R. F., & Moore, R. A. (2017). Opioids for cancer pain - an overview of Cochrane reviews. *Cochrane Database of Systemic Reviews*, 1 - 21. Retrieved from <https://doi.org/10.1002/2F14651858.CD012592.pub2>
- Zhao, F., Chang, V. T., Cleeland, C., Cleary, J. F., Mitchell, E. P., Wagner, L. I., & Fisch, M. J. (2014). Determinants of pain severity changes in ambulatory patients with cancer: an analysis from Eastern Cooperative Oncology Group trial E2Z02. *Journal of Clinical Oncology: Official Journal of the American Society of Clinical Oncology*, 32(4), 312 - 319. doi:10.1200/JCO.2013.50.6071

COPYRIGHT:

The Measure is not a clinical guideline, does not establish a standard of medical care, and has not been tested for all potential applications.

The Measure, while copyrighted, can be reproduced and distributed, without modification, for noncommercial purposes, e.g., use by health care providers in connection with their practices. Commercial use is defined as the sale, license, or distribution of the Measures for commercial gain, or incorporation of the Measure into a product or service that is sold, licensed or distributed for commercial gain.

Commercial uses of the Measure require a license agreement between the user and American Society of Clinical Oncology (ASCO) and prior written approval of ASCO. Contact measurement@asco.org for licensing this measure. Neither ASCO nor its members shall be responsible for any use of the Measure.

The PCPI's and American Medical Association's significant past efforts and contributions to the development and updating of the Measure are acknowledged.

ASCO is solely responsible for the review and enhancement ("Maintenance") of the Measure as of June 2020.

ASCO encourages use of the Measure by other health care professionals, where appropriate.

THE MEASURE AND SPECIFICATIONS ARE PROVIDED "AS IS" WITHOUT WARRANTY OF ANY KIND.

© 2025 American Society of Clinical Oncology. All Rights Reserved.

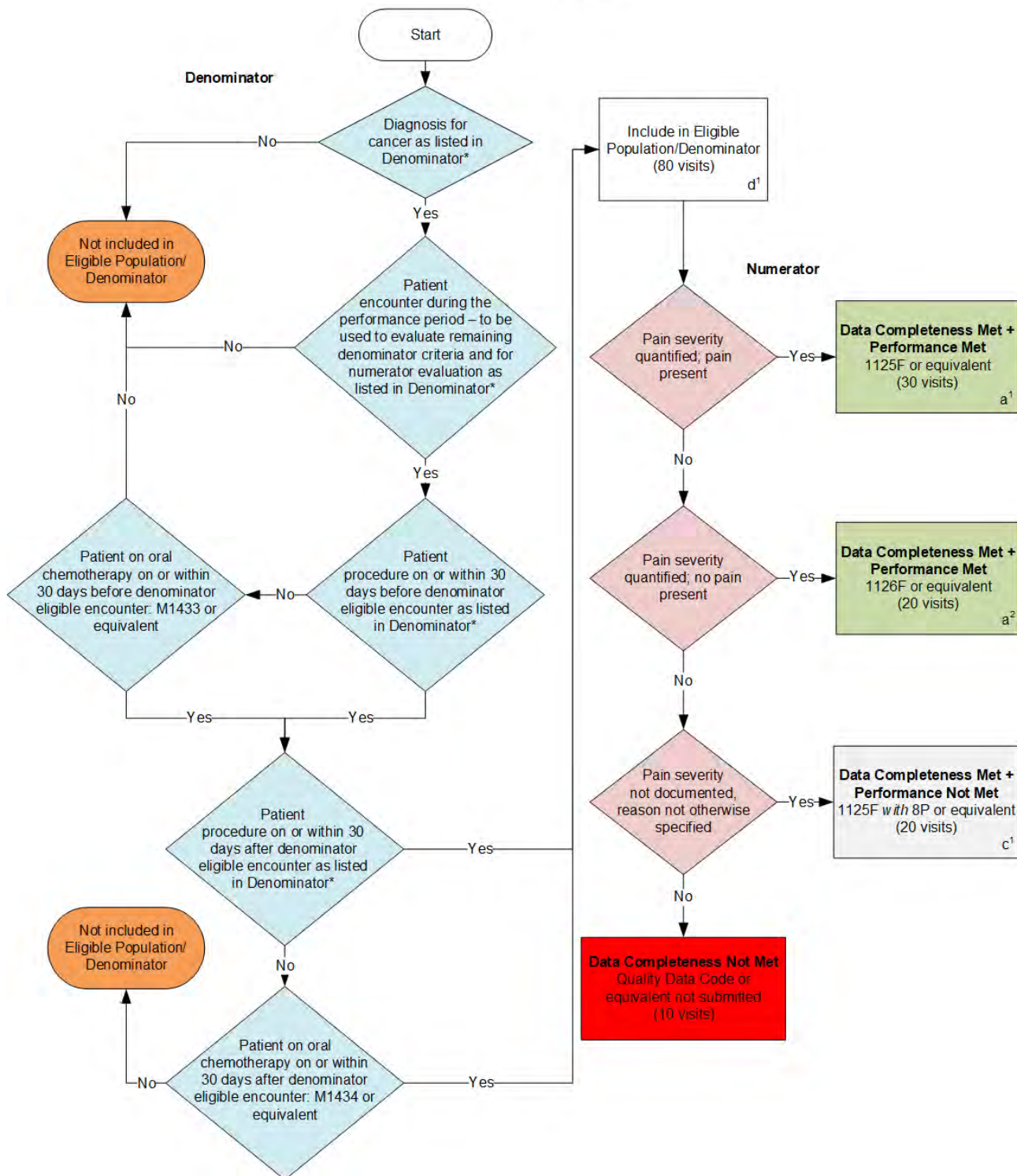
Limited proprietary coding may be contained in the Measure specifications for convenience. A license agreement must be entered prior to a third party's use of Current Procedural Terminology (CPT®) or other proprietary code sets contained in the Measures. Any other use of CPT or other coding by the third party is strictly prohibited. ASCO and its members disclaim all liability for use or accuracy of any CPT or other coding contained in the specifications.

CPT® contained in the Measures specifications is copyright 2004-2025 American Medical Association. LOINC® copyright 2004-2025 Regenstrief Institute, Inc. SNOMED CLINICAL TERMS (SNOMED CT®) copyright 2004-2025 The International Health Terminology Standards Development Organisation (IHTSDO). ICD-10 is copyright 2025 World Health Organization. All Rights Reserved.

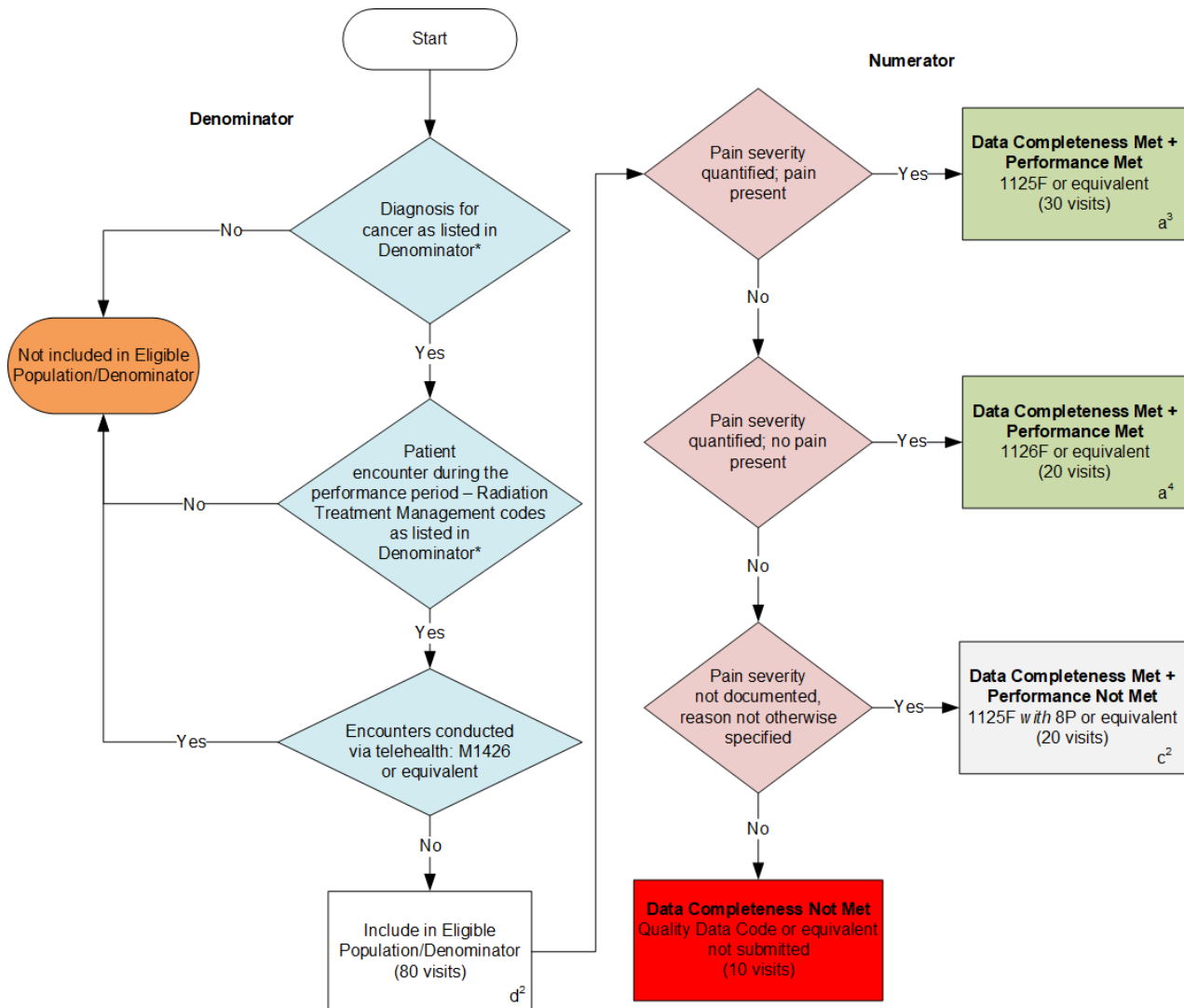
**2026 Clinical Quality Measure Flow for Quality ID #143 (CBE 0384):
Oncology: Medical and Radiation – Pain Intensity Quantified**

Disclaimer: Refer to the measure specification for specific coding and instructions to submit this measure.

Submission Criteria One



Submission Criteria Two



SAMPLE CALCULATIONS

Data Completeness=

$$\frac{\text{Performance Met (a}^1 + \text{a}^2 + \text{a}^3 + \text{a}^4 = 100 \text{ visits)} + \text{Performance Not Met (c}^1 + \text{c}^2 = 40 \text{ visits)}}{\text{Eligible Population / Denominator (d}^1 + \text{d}^2 = 160 \text{ visits)}} = \frac{140 \text{ visits}}{160 \text{ visits}} = 87.50\%$$

Performance Rate=

$$\frac{\text{Performance Met (a}^1 + \text{a}^2 + \text{a}^3 + \text{a}^4 = 100 \text{ visits)}}{\text{Data Completeness Numerator (140 visits)}} = \frac{100 \text{ visits}}{140 \text{ visits}} = 71.43\%$$

*See the posted measure specification for specific coding and instructions to submit this measure.

NOTE: This measure contains two Submission Criteria, although as the Sample Calculation indicates, there is ONLY one data completeness and one performance rate for this measure.

NOTE: Submission Frequency: Visit

CPT only copyright 2025 American Medical Association. All rights reserved.
The measure diagrams were developed by CMS as a supplemental resource to be used in conjunction with the measure specifications. They should not be used alone or as a substitution for the measure specification.

V10

**2026 Clinical Quality Measure Flow Narrative for Quality ID #143
(CBE 0384): Oncology: Medical and Radiation – Pain
Intensity Quantified**

Disclaimer: Refer to the measure specification for specification coding and instructions to submit this measure.

Submission Criteria One:

1. Start with Denominator
2. Check *Diagnosis for cancer as listed in Denominator**:
 - a. If *Diagnosis for cancer as listed in Denominator** equals No, do not include in *Eligible Population/Denominator*. Stop processing.
 - b. If *Diagnosis for cancer as listed in Denominator** equals Yes, proceed to check *Patient encounter during the performance period – to be used to evaluate remaining denominator criteria and for numerator evaluation, as listed in Denominator**.
3. Check *Patient encounter during the performance period – to be used to evaluate remaining denominator criteria and for numerator evaluation, as listed in Denominator**:
 - a. If *Patient encounter during the performance period – to be used to evaluate remaining denominator criteria and for numerator evaluation, as listed in Denominator** equals No, do not include in *eligible Population/Denominator*. Stop processing.
 - b. If *Patient encounter during the performance period – to be used to evaluate remaining denominator criteria and for numerator evaluation, as listed in Denominator** equals Yes, proceed to check *Patient procedure on or within 30 days before denominator eligible encounter as listed in Denominator**.
4. Check *Patient procedure on or within 30 days before denominator eligible encounter as listed in Denominator**:
 - a. If *Patient procedure on or within 30 days before denominator eligible encounter as listed in Denominator** equals Yes, check *Patient procedure on or within 30 days after denominator eligible encounter as listed in Denominator**.
 - b. If *Patient procedure on or within 30 days before denominator eligible encounter as listed in Denominator** equals No, check *Patient on oral chemotherapy on or within 30 days before denominator eligible encounter*.
5. Check *Patient on oral chemotherapy on or within 30 days before denominator eligible encounter*:
 - a. If *Patient on oral chemotherapy on or within 30 days after denominator eligible encounter* equals Yes, check *Patient procedure on or within 30 days after denominator eligible encounter*.
 - b. If *Patient on oral chemotherapy on or within 30 days before denominator*

eligible encounter as listed in Denominator equals No, do not include in Eligible Population/Denominator. Stop processing.*

6. Check *Patient procedure on or within 30 days after denominator eligible encounter as listed in Denominator**:
 - a. If *Patient procedure on or within 30 days after denominator eligible encounter as listed in Denominator** equals Yes, include in *Eligible Population/Denominator*.
 - b. If *Patient procedure on or within 30 days after denominator eligible encounter as listed in Denominator** equals No, check *Patient on oral chemotherapy on or within 30 days after denominator eligible encounter*.
7. Check *Patient on oral chemotherapy on or within 30 days after denominator eligible encounter*.
 - a. If *Patient on oral chemotherapy on or within 30 days after denominator eligible encounter as listed in Denominator** equals No, do not include in *Eligible Population/Denominator*. Stop processing.
 - b. If *Patient on oral chemotherapy on or within 30 days after denominator eligible encounter* equals Yes, include in *Eligible Population/Denominator*.
8. Denominator Population:
 - Denominator Population is all Eligible Visits in the Denominator. Denominator is represented as Denominator in the Sample Calculation listed at the end of this document. Letter d¹ equals 80 visits in the Sample Calculation.
9. Start Numerator
10. Check *Pain severity quantified; pain present*:
 - a. If *Pain severity quantified; pain present* equals Yes, include in *Data Completeness Met and Performance Met*.
 - *Data Completeness Met and Performance Met* letter is represented in the Data Completeness and Performance Rate in the Sample Calculation listed at the end of this document. Letter a¹ equals 30 visits in the Sample Calculation.
 - b. If *Pain severity quantified; pain present* equals No, proceed to check *Pain severity quantified; no pain present*.
11. Check *Pain severity quantified; no pain present*:
 - a. If *Pain severity quantified; no pain present* equals Yes, include in *Data Completeness Met and Performance Met*.
 - *Data Completeness Met and Performance Met* letter is represented in the Data Completeness and Performance Rate in the Sample Calculation listed at the end of this document. Letter a² equals 20 visits in the Sample Calculation.
 - b. If *Pain severity quantified; no pain present* equals No, proceed to check *Pain severity not documented, reason not otherwise specified*.

12. Check *Pain severity not documented, reason not otherwise specified*:
 - a. If *Pain severity not documented, reason not otherwise specified* equals Yes, include in *Data Completeness Met and Performance Not Met*.
 - *Data Completeness Met and Performance Not Met* letter is represented in the Data Completeness in the Sample Calculation listed at the end of this document. Letter c¹ equals 20 visits in the Sample Calculation.
 - b. If *Pain severity not documented, reason not otherwise specified* equals No, proceed to check *Data Completeness Not Met*.
13. Check *Data Completeness Not Met*:
 - If *Data Completeness Not Met*, the Quality Data Code or equivalent was not submitted. 10 visits have been subtracted from the Data Completeness Numerator in the Sample Calculation

Submission Criteria Two:

1. Start with Denominator
2. Check *Diagnosis for cancer as listed in Denominator**:
 - a. If *Diagnosis for cancer as listed in Denominator** equals No, do not include in *Eligible Population/Denominator*. Stop processing.
 - b. If *Diagnosis for cancer as listed in Denominator** equals Yes, proceed to check *Patient encounter during the performance period – Radiation Treatment Management codes as listed in Denominator**.
3. Check *Patient encounter during the performance period – Radiation Treatment Management codes as listed in Denominator**:
 - a. If *Patient encounter during the performance period – Radiation Treatment Management codes as listed in Denominator** equals No, do not include in *Eligible Population/Denominator*. Stop processing.
 - b. If *Patient encounter during the performance period – Radiation Treatment Management codes as listed in Denominator** equals Yes, proceed to check *Encounters conducted via telehealth*.
4. Check *Encounters conducted via telehealth*:
 - a. If *Encounters conducted via telehealth* equals Yes, do not include in *Eligible Population/Denominator*. Stop processing.
 - b. If *Encounters conducted via telehealth* equals No, include in *Eligible Population/Denominator*.
5. Denominator Population:
 - Denominator population is all Eligible Visits in the denominator. Denominator is represented as Denominator in the Sample Calculation listed at the end of this document. Letter d² equals 80 patients in the Sample Calculation.

6. Start Numerator:
7. Check *Pain severity quantified; pain present*:
 - a. If *Pain severity quantified; pain present* equals Yes, include in *Data Completeness Met and Performance Met*.
 - *Data Completeness Met and Performance Met* letter is represented in the Data Completeness and Performance Rate in the Sample Calculation listed at the end of this document. Letter a³ equals 30 visits in the Sample Calculation.
 - b. If *Pain severity quantified; pain present* equals No, proceed to check *Pain severity quantified; no pain present*.
8. Check *Pain severity quantified; no pain present*:
 - a. If *Pain severity quantified; no pain present* equals Yes, include in *Data Completeness Met and Performance Met*.
 - *Data Completeness Met and Performance Met* letter is represented in the Data Completeness and Performance Rate in the Sample Calculation listed at the end of this document. Letter a⁴ equals 20 visits in the Sample Calculation.
 - b. If *Pain severity quantified; no pain present* equals No, proceed to check *Pain severity not documented, reason not otherwise specified*.
9. Check *Pain severity not documented, reason not otherwise specified*:
 - a. If *Pain severity not documented, reason not otherwise specified* equals Yes, include in *Data Completeness Met and Performance Not Met*.
 - *Data Completeness Met and Performance Not Met* letter is represented in the Data Completeness in the Sample Calculation listed at the end of this document. Letter c² equals 20 visits in the Sample Calculation.
 - b. If *Pain severity not documented, reason not otherwise specified* equals No, proceed to check *Data Completeness Not Met*.
10. Check *Data Completeness Not Met*:
 - If *Data Completeness Not Met*, the Quality Data Code or equivalent was not submitted. 10 visits have been subtracted from the Data Completeness Numerator in the Sample Calculation.

Sample Calculations

Data Completeness equals Performance Met (a¹ plus a² plus a³ plus a⁴ equals 100 visits) plus Performance Not Met (c¹ plus c² equals 40 visits) divided by Eligible Population/Denominator (d¹ plus d² equals 160 visits). All equals 140 visits divided by 160 visits. All equals 87.50 percent.

Performance Rate equals Performance Met (a¹ plus a² plus a³ plus a⁴ equals 100 visits) divided by Data Completeness Numerator (140 visits). All equals 100 visits divided by 140 visits. All equals 71.43 percent.

*See the posted measure specification for specific coding and instructions to submit this measure.

This measure contains two Submission Criteria, although as the Sample Calculation indicates, there is ONLY one data completeness and one performance rate for this measure.

NOTE: Submission Frequency: Visit

The measure diagrams were developed by CMS as a supplemental resource to be used in conjunction with the measure specifications. They should not be used alone or as a substitution for the measure specification.