

Quality ID #220: Functional Status Change for Patients with Low Back Impairments

2023 COLLECTION TYPE:

MIPS CLINICAL QUALITY MEASURES (CQMS)

MEASURE TYPE:

Patient-Reported Outcome-Based Performance Measure – High Priority

DESCRIPTION:

A patient-reported outcome measure (PROM) of risk-adjusted change in functional status (FS) for patients 14 years+ with low back impairments. The change in FS is assessed using the FOTO Low Back FS PROM. The measure is adjusted to patient characteristics known to be associated with FS outcomes (risk adjusted) and used as a performance measure at the patient, individual clinician, and clinic levels to assess quality.

INSTRUCTIONS:

This outcome measure is to be submitted **once per Treatment Episode** for all patients with a functional deficit related to the low back region. This is an outcome measure and its calculation requires submitting of the patient's FS PROM score, at a minimum, at the start (Initial Evaluation or Intake) and again at the conclusion (Discharge) of a Treatment Episode. The Initial Evaluation score is recorded during the first treatment encounter, and the Discharge score is recorded at or near the conclusion of the final treatment encounter. It is anticipated that Merit-based Incentive Payment System (MIPS) eligible clinicians providing treatment for functional deficits related to the low back region will submit this measure.

Definitions:

Functional Deficit – Limitation or impairment of physical abilities/function resulting in evaluation and inclusion in a treatment plan of care.

Treatment Episode – A "Treatment Episode" is defined as beginning with an Initial Evaluation for a functional low back deficit, progressing through treatment without interruption (for example, a hospitalization or surgical intervention), and ending with Discharge, signifying that the treatment has been completed. A patient currently under clinical care for a low back functional deficit remains in a single "Treatment Episode" until the Discharge is conducted and documented by the MIPS eligible clinician.

Initial Evaluation – An "Initial Evaluation" is the first encounter for a functional deficit involving the low back and includes an evaluation (CPT 97161, 97162, 97163, 97165, 97166, 97167, 99202, 99203, 99204, 99205, 99212, 99213, 99214, 99215, 98940, 98941, 98942, 98943*, 99304, 99305, or 99306), or an "Initial Evaluation" Status M-code (M1121). A patient presenting with a low back impairment, who has had an interruption of a Treatment Episode for the same functional low back deficit secondary to an appropriate reason like hospitalization or surgical intervention, is an "Initial Evaluation".

Discharge – "Discharge" is accompanied by a treatment finalization and evaluation completion M-Code (M1012) identifying the close of a Treatment Episode for the same low back deficit identified at the Initial Evaluation and documented by a "Discharge" report by the MIPS eligible clinician. An interruption in clinical care for an appropriate reason like hospitalization or surgical intervention requires a "Discharge" from the current Treatment Episode.

Encounter – A visit between the patient and the provider for the purpose of assessing and/or improving a functional deficit.

Patient Reported – The patient directly provides answers to the FS PROM items. If the patient cannot reliably respond independently (e.g., in the presence of cognitive deficits), a suitable proxy may provide answers.

The Low Back FS PROM score – The "Low Back FS PROM score" may be achieved using one of three forms: the FOTO Low Back FS PROM computer adaptive test, the FOTO Low Back PROM short form, or an alternative PROM score that is cross-walked to the FOTO Low Back PROM, using a cross-walk form developed by the measure steward. Computer adaptive test (CAT) is recommended to achieve best balance

between reduced patient burden and score precision. At least one cross-walk form has been developed by the measure steward and meets scientific standards to successfully link a construct-equivalent PROM using advanced psychometric equating methods.

For more information about the Low Back PROM score forms and to access the components that are available free of charge for use with this MIPS quality measure [e.g., patient-reported outcome measure(s), cross-walking, risk adjustment], visit [Public Access to FOTO Measures](#).

NOTE: Patient encounters for this measure conducted via telehealth (e.g., encounters coded with GQ, GT, 95, or POS 02 modifiers) are allowable.

Measure Submission Type:

Measure data may be submitted by individual MIPS eligible clinicians, groups, or third party intermediaries. The listed denominator criteria are used to identify the intended patient population. The numerator options included in this specification are used to submit the quality actions as allowed by the measure. The quality data codes listed do not need to be submitted by MIPS eligible clinicians, groups, or third party intermediaries that utilize this modality for submissions; however, these codes may be submitted for those third party intermediaries that utilize Medicare Part B claims data. For more information regarding Application Programming Interface (API), please refer to the Quality Payment Program (QPP) website.

DENOMINATOR:

All patients 14 years and older with a low back impairment who have initiated a Treatment Episode

DENOMINATOR NOTE: *Signifies that this CPT Category I code is a non-covered service under the Medicare Part B Physician Fee Schedule (PFS). These non-covered services should be counted in the denominator population for MIPS CQMs.

Denominator Criteria (Eligible Cases):

All patients aged ≥ 14 on date of Initial Evaluation

AND

Patient encounter during the performance period identifying evaluation (CPT or M-code): 97161, 97162, 97163, 97165, 97166, 97167, 99202, 99203, 99204, 99205, 99212, 99213, 99214, 99215, 98940, 98941, 98942, 98943*, 99304, 99305, 99306, or M1121

AND

With a low back impairment and/or diagnosis pertaining to a functional deficit affecting the low back (ICD-10-CM):

G54.1, G54.4, G57.01, G57.02, G57.03, M40.36, M40.37, M40.46, M40.47, M40.56, M40.57, M41.126, M41.127, M41.26, M41.27, M41.46, M41.47, M41.56, M41.57, M41.86, M41.87, M42.06, M42.07, M42.08, M42.16, M42.17, M42.18, M43.06, M43.07, M43.08, M43.16, M43.17, M43.18, M43.26, M43.27, M43.28, M43.5X6, M43.5X7, M43.5X8, M43.8X6, M43.8X7, M43.8X8, M45.A5, M45.A6, M45.A7, M45.A8, M45.6, M45.7, M45.8, M46.06, M46.07, M46.08, M46.1, M46.26, M46.27, M46.28, M46.46, M46.47, M46.48, M46.86, M46.87, M46.88, M46.96, M46.97, M46.98, M47.16, M47.26, M47.27, M47.28, M47.816, M47.817, M47.818, M47.896, M47.897, M47.898, M48.061, M48.062, M48.07, M48.08, M48.16, M48.17, M48.18, M48.26, M48.27, M48.36, M48.37, M48.38, M48.46XA, M48.46XD, M48.46XG, M48.46XS, M48.47XA, M48.47XD, M48.47XG, M48.47XS, M48.48XA, M48.48XD, M48.48XG, M48.48XS, M48.56XA, M48.56XD, M48.56XG, M48.56XS, M48.57XA, M48.57XD, M48.57XG, M48.57XS, M48.58XA, M48.58XD, M48.58XG, M48.58XS, M48.8X6, M48.8X7, M48.8X8, M49.86, M49.87, M49.88, M51.A0, M51.A1, M51.A2, M51.A3, M51.A4, M51.A5, M51.06, M51.16, M51.17, M51.26, M51.27, M51.36, M51.37, M51.46, M51.47, M51.86, M51.87, M53.2X6, M53.2X7, M53.2X8, M53.3, M53.86, M53.87, M53.88, M54.16, M54.17, M54.18, M54.31, M54.32, M54.41, M54.42, M54.50, M54.51, M54.59, M99.03, M99.04, M99.13, M99.14, M99.23, M99.24, M99.33, M99.34, M99.43, M99.44, M99.53, M99.54, M99.63, M99.64, M99.73, M99.74, M99.83, M99.84, Q05.2, Q05.3, Q05.7, Q05.8, Q76.426, S32.010D, S32.010G, S32.010K, S32.010S, S32.011D, S32.011G, S32.011K, S32.011S, S32.012D, S32.012G, S32.012K,

S32.012S, S32.018D, S32.018G, S32.018K, S32.018S, S32.019D, S32.019G, S32.019K, S32.019S, S32.020D, S32.020G, S32.020K, S32.020S, S32.021D, S32.021G, S32.021K, S32.021S, S32.022D, S32.022G, S32.022K, S32.022S, S32.028D, S32.028G, S32.028K, S32.028S, S32.029D, S32.029G, S32.029K, S32.029S, S32.030D, S32.030G, S32.030K, S32.030S, S32.031D, S32.031G, S32.031K, S32.031S, S32.032D, S32.032G, S32.032K, S32.032S, S32.038D, S32.038G, S32.038K, S32.038S, S32.039D, S32.039G, S32.039K, S32.039S, S32.040D, S32.040G, S32.040K, S32.040S, S32.041D, S32.041G, S32.041K, S32.041S, S32.042D, S32.042G, S32.042K, S32.042S, S32.048D, S32.048G, S32.048K, S32.048S, S32.049D, S32.049G, S32.049K, S32.049S, S32.050D, S32.050G, S32.050K, S32.050S, S32.051D, S32.051G, S32.051K, S32.051S, S32.052D, S32.052G, S32.052K, S32.052S, S32.058D, S32.058G, S32.058K, S32.058S, S32.059D, S32.059G, S32.059K, S32.059S, S32.10XD, S32.10XG, S32.10XK, S32.10XS, S32.110D, S32.110G, S32.110K, S32.110S, S32.111D, S32.111G, S32.111K, S32.111S, S32.112D, S32.112G, S32.112K, S32.112S, S32.119D, S32.119G, S32.119K, S32.119S, S32.120D, S32.120G, S32.120K, S32.120S, S32.121D, S32.121G, S32.121K, S32.121S, S32.122D, S32.122G, S32.122K, S32.122S, S32.129D, S32.129G, S32.129K, S32.129S, S32.130D, S32.130G, S32.130K, S32.130S, S32.131D, S32.131G, S32.131K, S32.131S, S32.132D, S32.132G, S32.132K, S32.132S, S32.139D, S32.139G, S32.139K, S32.139S, S32.14XD, S32.14XG, S32.14XK, S32.14XS, S32.15XD, S32.15XG, S32.15XK, S32.15XS, S32.16XD, S32.16XG, S32.16XK, S32.16XS, S32.17XD, S32.17XG, S32.17XK, S32.17XS, S32.19XD, S32.19XG, S32.19XK, S32.19XS, S32.2XXD, S32.2XXG, S32.2XXK, S32.2XXS, S33.0XXD, S33.0XXS, S33.110A, S33.110D, S33.110S, S33.111D, S33.111S, S33.120A, S33.120D, S33.120S, S33.121D, S33.121S, S33.130A, S33.130D, S33.130S, S33.131D, S33.131S, S33.140A, S33.140D, S33.140S, S33.141D, S33.141S, S33.2XXD, S33.2XXS, S33.5XXA, S33.5XXD, S33.5XXS, S33.6XXA, S33.6XXD, S33.6XXS, S39.002A, S39.002D, S39.002S, S39.012A, S39.012D, S39.012S, S39.092A, S39.092D, S39.092S, S39.82XA, S39.82XD, S39.82XS, S39.92XA, S39.92XD, S39.92XS

AND

Discharge/discontinuation of the episode of care documented in the medical record (M-code): M1012

AND NOT

DENOMINATOR EXCLUSIONS:

Documentation stating patient has a diagnosis of a degenerative neurological condition such as ALS, MS, or Parkinson's diagnosed at any time before or during the episode of care: M1122

OR

Patient unable to complete the Low Back FS PROM at Initial Evaluation and/or Discharge due to blindness, illiteracy, severe mental incapacity or language incompatibility and an adequate proxy is not available: G9733

NUMERATOR:

Patients who were presented with the Low Back FS PROM at Initial Evaluation (Intake) and at or near Discharge (Status) for the purpose of calculating the patient's Residual Score

Definitions:

Functional Status (FS) Score – This is the **Low Back FS PROM** score as described under Instructions Definitions.

FS Change Score – The "FS Change Score" is calculated by subtracting the FS Score at Initial Evaluation from the FS Score at Discharge.

Predicted FS Change Score – The "Predicted FS Change Score" is calculated by accounting for the influence of multiple patient characteristics as designated by the risk adjustment model. For each patient completing an Low Back FS PROM at Initial Evaluation (Intake), the predictive model provides a risk-adjusted prediction of FS Change at Discharge.

Residual Score – The "Residual Score" is calculated by subtracting the Predicted FS Change Score from the FS Change Score (i.e., actual minus predicted). The "Residual Score", which is in the same units as the FS Score, should be interpreted as the amount of FS change that is different than the amount of change that was predicted given the risk-adjustment variables of the patient being treated. Residual Scores of zero (0) or greater (> 0) should be interpreted as FS Change Scores that met or exceeded what was predicted. Residual Scores less than zero (< 0) should be interpreted as FS Change Scores that were less than predicted.

Aggregated Residual Scores allow meaningful comparisons amongst clinicians or clinics.

Numerator Options:

Performance Met:

Residual Score for the low back impairment successfully calculated and the score was equal to zero (0) or greater than zero (> 0) (**G8659**)

OR

Denominator Exception:

Ongoing care not clinically indicated because the patient needed a home program only, referral to another provider or facility, or consultation only, as documented in the medical record (**M1123**)

OR

Denominator Exception:

Ongoing care not medically possible because the patient was discharged early due to specific medical events, documented in the medical record, such as the patient became hospitalized or scheduled for surgery (**M1124**)

OR

Denominator Exception:

Ongoing care not possible because the patient self-discharged early (e.g., financial or insurance reasons, transportation problems, or reason unknown) (**M1125**)

OR

Denominator Exception:

Patient refused to participate (**G9732**)

OR

Performance Not Met:

Residual Score for the low back impairment successfully calculated and the score was less than zero (< 0) (**G8660**)

OR

Performance Not Met:

Residual Score for the low back impairment not measured because the patient did not complete the Low Back FS PROM at Initial Evaluation and/or near discharge, reason not given (**G8662**)

RATIONALE:

Functional deficits are common in the general population and are costly to the individual, their family, and society. Improved functional status has been associated with greater quality of life, self-efficacy, improved financial well-being, and lower future medical costs. Improving functional status in people seeking rehabilitation has become a goal of the American Physical Therapy Association (APTA). Therefore, measuring change in functional status is important for providers treating patients in rehabilitation and can be used to assess the success of treatment and direct modification of treatment.

Change in functional status represents the Activities and Participation domain of the International Classification of Functioning, Disability and Health. If treatment is designed to improve the functional deficit, it is logical to assess functional status at discharge using a standardized score to determine if treatment improved the functional status of the patient over the treatment episode.

The National Quality Measures Clearinghouse has approved the measurement of change in functional status, using this measure. (NQMC-2632)

CLINICAL RECOMMENDATION STATEMENTS:

The American Physical Therapy Association, in their Guide to Physical Therapist Practice, described five recommended elements of patient management: examination, evaluation, diagnosis, prognosis, and intervention. The elements were intended to direct therapists in their approach to patient treatment for the purpose of optimizing patient outcomes. The APTA clearly identifies functional status data as one of the major forms of data to be collected for

patients receiving rehabilitation. The functional status measures should be used to assist in the planning, implementation, and modification of treatment interventions and should be used as measures of outcomes. The current functional status scores can be used by therapists to fulfill the recommended methods of the APTA in the management of patients in rehabilitation.

COPYRIGHT:

THE MEASURES AND SPECIFICATIONS ARE PROVIDED "AS IS" WITHOUT WARRANTY OF ANY KIND.

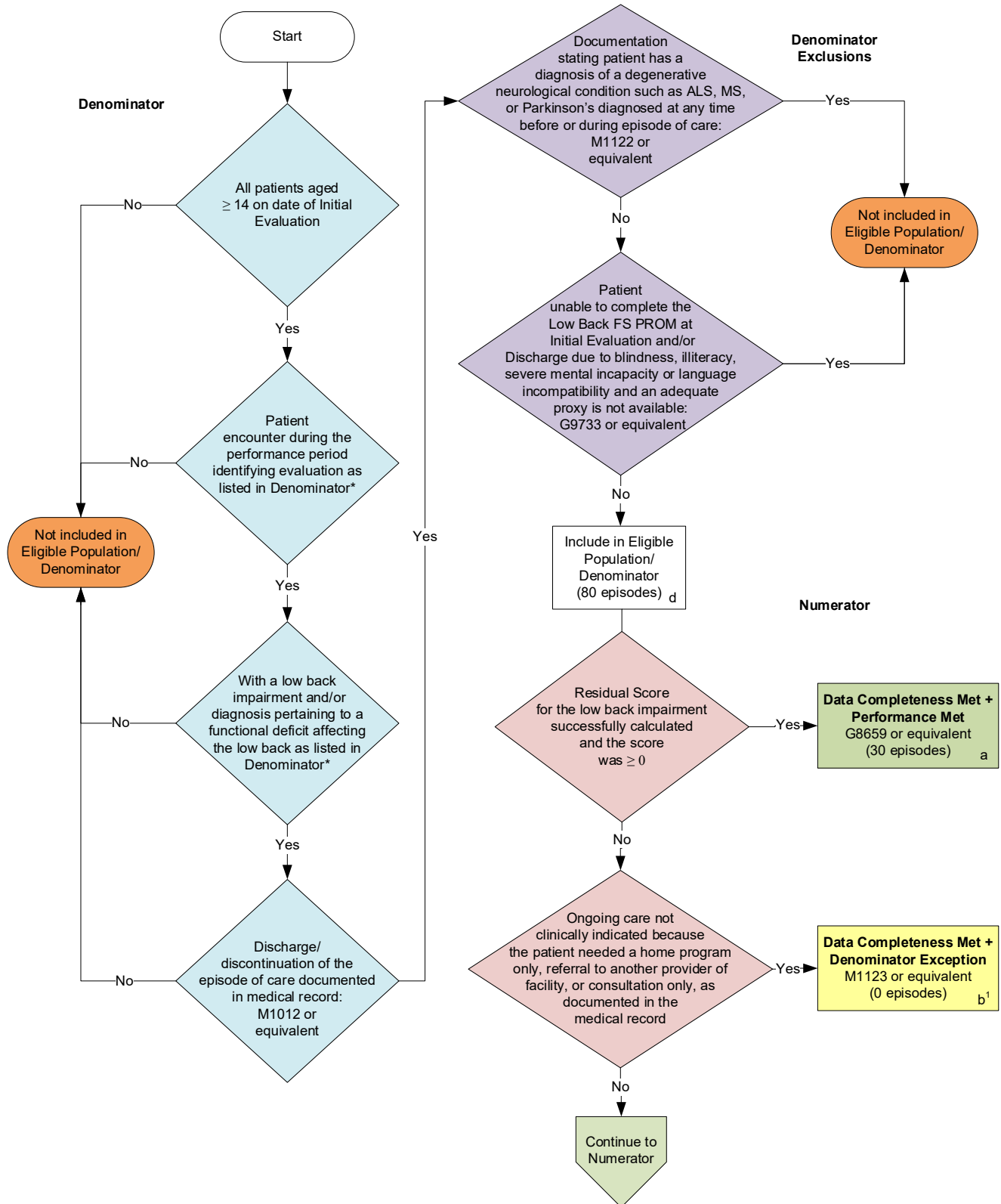
© 2009-2023 Net Health Systems, Inc. All Rights Reserved.

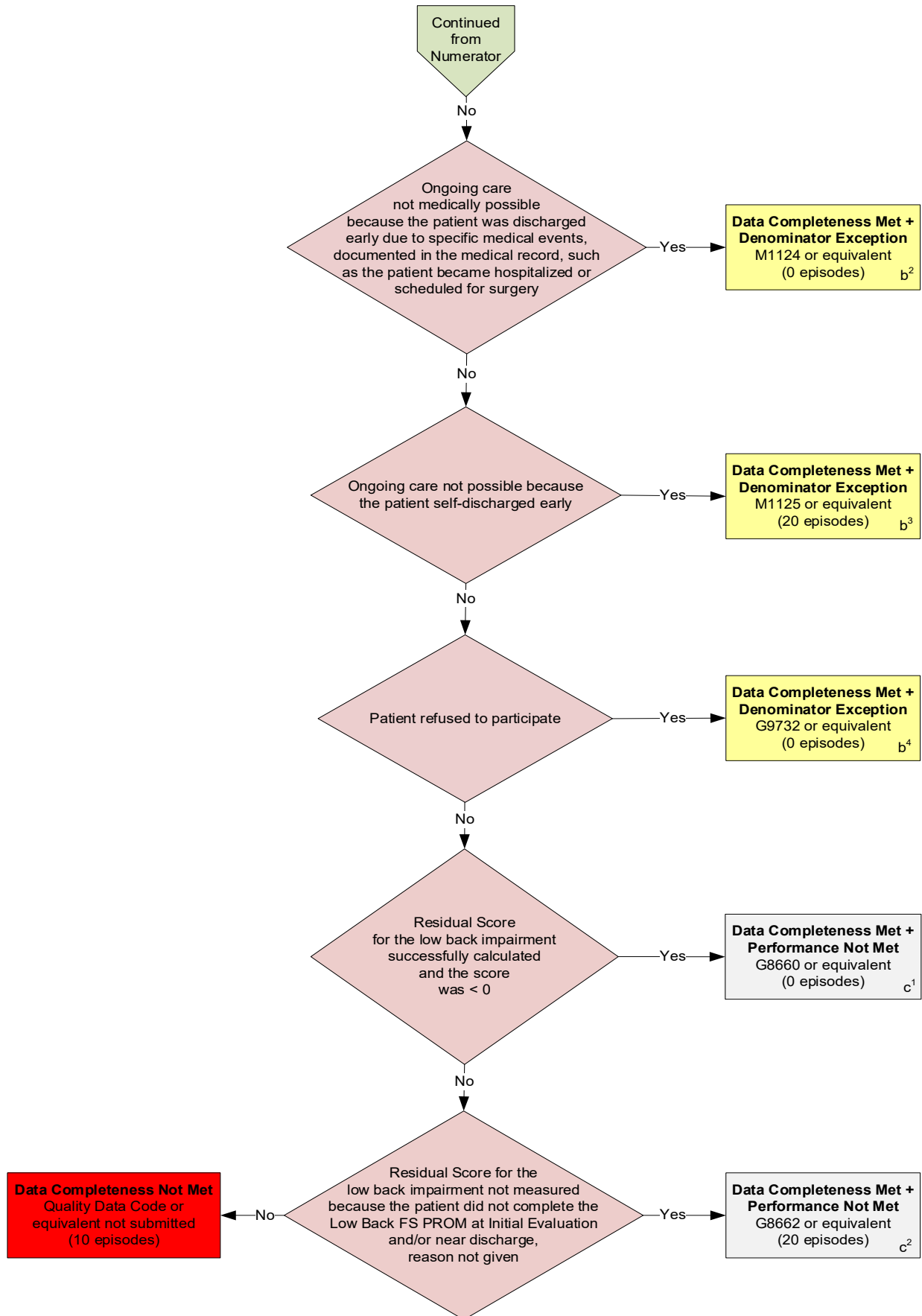
Net Health Systems, Inc. disclaims all liability for use or accuracy of any Current Procedural Terminology (CPT®) or other coding contained in the specifications.

CPT® contained in the Measures specifications is copyright 2004-2022 American Medical Association. ICD-10 is copyright 2022 World Health Organization. All Rights Reserved.

2023 Clinical Quality Measure Flow for Quality ID #220: Functional Status Change for Patients with Low Back Impairments

Disclaimer: Refer to the measure specification for specific coding and instructions to submit this measure.





SAMPLE CALCULATIONS

Data Completeness=

$$\frac{\text{Performance Met (a=30 episodes)} + \text{Denominator Exception (b}^1+\text{b}^2+\text{b}^3+\text{b}^4=20 \text{ episodes)} + \text{Performance Not Met (c}^1+\text{c}^2=20 \text{ episodes)}}{\text{Eligible Population / Denominator (d=80 episodes)}} = \frac{70 \text{ episodes}}{80 \text{ episodes}} = 87.50\%$$

Performance Rate=

$$\frac{\text{Performance Met (a=30 episodes)}}{\text{Data Completeness Numerator (70 episodes) – Denominator Exception (b}^1+\text{b}^2+\text{b}^3+\text{b}^4=20 \text{ episodes)}} = \frac{30 \text{ episodes}}{50 \text{ episodes}} = 60.00\%$$

*See the posted measure specification for specific coding and instructions to submit this measure.

NOTE: Submission Frequency: Episode

CPT only copyright 2022 American Medical Association. All rights reserved.
The measure diagrams were developed by CMS as a supplemental resource to be used in conjunction with the measure specifications. They should not be used alone or as a substitution for the measure specification.

v7

**2023 Clinical Quality Measure Flow Narrative for Quality ID #220:
Functional Status Change for Patients with Low Back Impairments**

Disclaimer: Refer to the measure specification for specific coding and instructions to submit this measure.

1. Start with Denominator
2. Check *All patients aged greater than or equal to 14 years on date of Initial Evaluation*:
 - a. If *All patients aged greater than or equal to 14 years on date of Initial Evaluation* equals No, do not include in *Eligible Population/Denominator*. Stop processing.
 - b. If *All patients aged greater than or equal to 14 years on date of Initial Evaluation* equals Yes, proceed to check *Patient encounter during the performance period identifying evaluation as listed in Denominator**.
3. Check *Patient encounter during the performance period identifying evaluation as listed in Denominator**:
 - a. If *Patient encounter during the performance period identifying evaluation as listed in Denominator** equals No, do not include in *Eligible Population/Denominator*. Stop processing.
 - b. If *Patient encounter during the performance period identifying evaluation as listed in Denominator** equals Yes, proceed to check *With a low back impairment and/or diagnosis pertaining to a functional deficit affecting the low back as listed in Denominator**.
4. Check *With a low back impairment and/or diagnosis pertaining to a functional deficit affecting the low back as listed in Denominator**:
 - a. If *With a low back impairment and/or diagnosis pertaining to a functional deficit affecting the low back as listed in Denominator** equals No, do not include in *Eligible Population/Denominator*. Stop processing.
 - b. If *With a low back impairment and/or diagnosis pertaining to a functional deficit affecting the low back as listed in Denominator** equals Yes, proceed to check *Discharge/discontinuation of the episode of care documented in medical record*.
5. Check *Discharge/discontinuation of the episode of care documented in medical record*:
 - a. If *Discharge/discontinuation of the episode of care documented in medical record* equals No, do not include in *Eligible Population/Denominator*. Stop processing.
 - b. If *Discharge/discontinuation of the episode of care documented in the medical record* equals Yes, proceed to check *Documentation stating patient has a diagnosis of a degenerative neurological condition such as ALS, MS, or Parkinson's diagnosed at any time before or during episode of care*.
6. Check *Documentation stating patient has a diagnosis of a degenerative neurological condition such as ALS, MS, or Parkinson's diagnosed at any time before or during episode of care*:
 - a. If *Documentation stating patient has a diagnosis of a degenerative neurological condition such as ALS, MS, or Parkinson's diagnosed at any time before or during episode of care* equals Yes, do not include in *Eligible Population/Denominator*. Stop processing.
 - b. If *Documentation stating patient has a diagnosis of a degenerative neurological condition such as ALS, MS, or Parkinson's diagnosed at any time before or during episode of care* equals No, proceed to check *Patient unable to complete Low Back FS PROM at Initial Evaluation and/or Discharge due to blindness, illiteracy, severe mental incapacity, or language incompatibility and an adequate proxy is not available*.

7. Check *Patient unable to complete Low Back FS PROM at Initial Evaluation and/or Discharge due to blindness, illiteracy, severe mental incapacity, or language incompatibility and an adequate proxy is not available*:
 - a. If *Patient unable to complete Low Back FS PROM at Initial Evaluation and/or Discharge due to blindness, illiteracy, severe mental incapacity, or language incompatibility and an adequate proxy is not available* equals Yes, do not include in *Eligible Population/Denominator*. Stop processing.
 - b. If *Patient unable to complete Low Back FS PROM at Initial Evaluation and/or Discharge due to blindness, illiteracy, severe mental incapacity, or language incompatibility and an adequate proxy is not available* equals No, include in *Eligible Population/Denominator*.
8. Denominator Population:
 - Denominator Population is all Eligible Episodes in the Denominator. Denominator is represented as Denominator in the Sample Calculation listed at the end of this document. Letter d equals 80 episodes in the Sample Calculation.
9. Start Numerator
10. Check *Residual Score for the low back impairment successfully calculated and the score was greater than or equal to 0*:
 - a. If *Residual Score for the low back impairment successfully calculated and the score was greater than or equal to 0* equals Yes, include in *Data Completeness Met and Performance Met*.
 - *Data Completeness Met and Performance Met* letter is represented in the Data Completeness and Performance Rate in the Sample Calculation listed at the end of this document. Letter a equals 30 episodes in the Sample Calculation.
 - b. If *Residual Score for the low back impairment successfully calculated and the score was greater than or equal to 0* equals No, proceed to check *Ongoing care not clinically indicated because the patient needed a home program only, referral to another provider or facility, or consultation only, as documented in the medical record*.
11. Check *Ongoing care not clinically indicated because the patient needed a home program only, referral to another provider or facility, or consultation only, as documented in the medical record*:
 - a. If *Ongoing care not clinically indicated because the patient needed a home program only, referral to another provider or facility, or consultation only, as documented in the medical record* equals Yes, include in *Data Completeness Met and Denominator Exception*.
 - *Data Completeness Met and Denominator Exception* letter is represented in the Data Completeness and Performance Rate in the Sample Calculation listed at the end of this document. Letter b¹ equals 0 episodes in the Sample Calculation.
 - b. If *Ongoing care not clinically indicated because the patient needed a home program only, referral to another provider or facility, or consultation only, as documented in the medical record* equals No, proceed to check *Ongoing care not medically possible because the patient was discharged early due to specific medical events, documented in the medical record, such as the patient became hospitalized or scheduled for surgery*.
12. Check *Ongoing care not medically possible because the patient was discharged early due to specific medical events, documented in the medical record, such as the patient became hospitalized or scheduled for surgery*:

- a. If *Ongoing care not medically possible because the patient was discharged early due to specific medical events, documented in the medical record, such as the patient became hospitalized or scheduled for surgery* equals Yes, include in *Data Completeness Met and Denominator Exception*.
 - *Data Completeness Met and Denominator Exception* letter is represented in the Data Completeness and Performance Rate in the Sample Calculation listed at the end of this document. Letter b² equals 0 episodes in the Sample Calculation.
 - b. If *Ongoing care not medically possible because the patient was discharged early due to specific medical events, documented in the medical record, such as the patient became hospitalized or scheduled for surgery* equals No, proceed to check *Ongoing care not possible because the patient self-discharged early*.
13. Check *Ongoing care not possible because the patient self-discharged early*:
- a. If *Ongoing care not possible because the patient self-discharged early* equals Yes, include in *Data Completeness Met and Denominator Exception*.
 - *Data Completeness Met and Denominator Exception* letter is represented in the Data Completeness and Performance Rate in the Sample Calculation listed at the end of this document. Letter b³ equals 20 episodes in the Sample Calculation.
 - b. If *Ongoing care not possible because the patient self-discharged early* equals No, proceed to check *Patient refused to participate*.
14. Check *Patient refused to participate*:
- a. If *Patient refused to participate* equals Yes, include in *Data Completeness Met and Denominator Exception*.
 - *Data Completeness Met and Denominator Exception* letter is represented in the Data Completeness and Performance Rate in the Sample Calculation listed at the end of this document. Letter b⁴ equals 0 episodes in the Sample Calculation.
 - b. If *Patient refused to participate* equals No, proceed to check *Residual Score for the low back impairment successfully calculated and the score was less than 0*.
15. Check *Residual Score for the low back impairment successfully calculated and the score was less than 0*:
- a. If *Residual Score for the low back impairment successfully calculated and the score was less than 0* equals Yes, include in *Data Completeness Met and Performance Not Met*.
 - *Data Completeness Met and Performance Not Met* letter is represented in the Data Completeness and Performance Rate in the Sample Calculation listed at the end of this document. Letter c¹ equals 0 episodes in the Sample Calculation.
 - b. If *Residual Score for the low back impairment successfully calculated and the score was less than 0* equals No, proceed to check *Residual Score for the low back impairment not measured because the patient did not complete the Low Back FS PROM at Initial Evaluation and/or near discharge, reason not given*.
16. Check *Residual Score for the low back impairment not measured because the patient did not complete the Low Back FS PROM at Initial Evaluation and/or near discharge, reason not given*:
- a. If *Residual Score for the low back impairment not measured because the patient did not complete the Low Back FS PROM at Initial Evaluation and/or near discharge, reason not given* equals Yes, include in *Data Completeness Met and Performance Not Met*.

- *Data Completeness Met and Performance Not Met* letter is represented in the Data Completeness in the Sample Calculation listed at the end of this document. Letter c² equals 20 episodes in the Sample Calculation.
- b. If *Residual Score for the low back impairment not measured because the patient did not complete the Low Back FS PROM at Initial Evaluation and/or near discharge, reason not given* equals No, proceed to check *Data Completeness Not Met*.

17. Check *Data Completeness Not Met*:

- If *Data Completeness Not Met*, the Quality Data Code or equivalent was not submitted. 10 episodes have been subtracted from the Data Completeness Numerator in the Sample Calculation.

Sample Calculations

Data Completeness equals Performance Met (a equals 30 episodes) plus Denominator Exception (b¹ plus b² plus b³ plus b⁴ equals 20 episodes) plus Performance Not Met (c¹ plus c² equals 20 episodes) divided by Eligible Population/Denominator (d equals 80 episodes). All equals 70 episodes divided by 80 episodes. All equals 87.50 percent.

Performance Rate equals Performance Met (a equals 30 episodes) divided by Data Completeness Numerator (70 episodes) minus Denominator Exception (b¹ plus b² plus b³ plus b⁴ equals 20 episodes). All equals 30 episodes divided by 50 episodes. All equals 60.00 percent.

* See the posted measure specification for specific coding and instructions to submit this measure.

NOTE: Submission Frequency: Episode

The measure diagrams were developed by CMS as a supplemental resource to be used in conjunction with the measure specifications. They should not be used alone or as a substitution for the measure specification.