

Quality ID #127: Diabetes Mellitus: Diabetic Foot and Ankle Care, Ulcer Prevention – Evaluation of Footwear

2024 COLLECTION TYPE:
MIPS CLINICAL QUALITY MEASURES (CQMS)

MEASURE TYPE:
Process

DESCRIPTION:
Percentage of patients aged 18 years and older with a diagnosis of diabetes mellitus who were evaluated for proper footwear and sizing.

INSTRUCTIONS:
This measure is to be submitted a minimum of **once per performance period** for patients with diabetes mellitus seen during the performance period. This measure may be submitted by non-medical doctor/doctor of osteopathic medicine (MD/DO) Merit-based Incentive Payment System (MIPS) eligible clinicians who perform the quality actions described in the measure based on the services provided and the measure-specific denominator coding.

Measure Submission Type:
Measure data may be submitted by individual MIPS eligible clinicians, groups, or third-party intermediaries. The listed denominator criteria are used to identify the intended patient population. The numerator options included in this specification are used to submit the quality actions as allowed by the measure. The quality data codes listed do not need to be submitted by MIPS eligible clinicians, groups, or third-party intermediaries that utilize this modality for submissions; however, these codes may be submitted for those third-party intermediaries that utilize Medicare Part B claims data. For more information regarding Application Programming Interface (API), please refer to the Quality Payment Program (QPP) website.

DENOMINATOR:
All patients aged 18 years and older with a diagnosis of diabetes mellitus

Denominator Criteria (Eligible Cases):
Patients aged ≥ 18 years on date of encounter

AND
Diagnosis for diabetes (ICD-10-CM): E10.10, E10.11, E10.21, E10.22, E10.29, E10.311, E10.319, E10.3211, E10.3212, E10.3213, E10.3219, E10.3291, E10.3292, E10.3293, E10.3299, E10.3311, E10.3312, E10.3313, E10.3319, E10.3391, E10.3392, E10.3393, E10.3399, E10.3411, E10.3412, E10.3413, E10.3419, E10.3491, E10.3492, E10.3493, E10.3499, E10.3511, E10.3512, E10.3513, E10.3519, E10.3521, E10.3522, E10.3523, E10.3529, E10.3531, E10.3532, E10.3533, E10.3539, E10.3541, E10.3542, E10.3543, E10.3549, E10.3551, E10.3552, E10.3553, E10.3559, E10.3591, E10.3592, E10.3593, E10.3599, E10.37X1, E10.37X2, E10.37X3, E10.37X9, E10.36, E10.39, E10.40, E10.41, E10.42, E10.43, E10.44, E10.49, E10.51, E10.52, E10.59, E10.610, E10.618, E10.620, E10.621, E10.622, E10.628, E10.630, E10.638, E10.641, E10.649, E10.65, E10.69, E10.8, E10.9, E11.00, E11.01, E11.10, E11.11, E11.21, E11.22, E11.29, E11.311, E11.319, E11.3211, E11.3212, E11.3213, E11.3219, E11.3291, E11.3292, E11.3293, E11.3299, E11.3311, E11.3312, E11.3313, E11.3319, E11.3391, E11.3392, E11.3393, E11.3399, E11.3411, E11.3412, E11.3413, E11.3419, E11.3491, E11.3492, E11.3493, E11.3499, E11.3511, E11.3512, E11.3513, E11.3519, E11.3521, E11.3522, E11.3523, E11.3529, E11.3531, E11.3532, E11.3533, E11.3539, E11.3541, E11.3542, E11.3543, E11.3549, E11.3551, E11.3552, E11.3553, E11.3559, E11.3591, E11.3592, E11.3593, E11.3599, E11.37X1, E11.37X2, E11.37X3, E11.37X9, E11.36, E11.39, E11.40, E11.41, E11.42, E11.43, E11.44, E11.49, E11.51, E11.52, E11.59, E11.610, E11.618,

E11.620, E11.621, E11.622, E11.628, E11.630, E11.638, E11.641, E11.649, E11.65, E11.69, E11.8, E11.9, E13.00, E13.01, E13.10, E13.11, E13.21, E13.22, E13.29, E13.311, E13.319, E13.3211, E13.3212, E13.3213, E13.3219, E13.3291, E13.3292, E13.3293, E13.3299, E13.3311, E13.3312, E13.3313, E13.3319, E13.3391, E13.3392, E13.3393, E13.3399, E13.3411, E13.3412, E13.3413, E13.3419, E13.3491, E13.3492, E13.3493, E13.3499, E13.3511, E13.3512, E13.3513, E13.3519, E13.3521, E13.3522, E13.3523, E13.3529, E13.3531, E13.3532, E13.3533, E13.3539, E13.3541, E13.3542, E13.3543, E13.3549, E13.3551, E13.3552, E13.3553, E13.3559, E13.3591, E13.3592, E13.3593, E13.3599, E13.37X1, E13.37X2, E13.37X3, E13.37X9, E13.36, E13.39, E13.40, E13.41, E13.42, E13.43, E13.44, E13.49, E13.51, E13.52, E13.59, E13.610, E13.618, E13.620, E13.621, E13.622, E13.628, E13.630, E13.638, E13.641, E13.649, E13.65, E13.69, E13.8, E13.9

AND

Patient encounter during the performance period (CPT): 11042, 11043, 11044, 11055, 11056, 11057, 11719, 11720, 11721, 11730, 11740, 97161, 97162, 97163, 97164, 97597, 97802, 97803, 99202, 99203, 99204, 99205, 99212, 99213, 99214, 99215, 99304, 99305, 99306, 99307, 99308, 99309, 99310, 99341, 99342, 99344, 99345, 99347, 99348, 99349, 99350, G0127

WITHOUT

Telehealth Modifier (including but not limited to): GQ, GT, 95, POS 02, FQ, 93, POS 10

AND NOT

DENOMINATOR EXCLUSION:

Clinician documented that patient was not an eligible candidate for evaluation of footwear as patient is bilateral lower extremity amputee: G2180

NUMERATOR:

Patients who were evaluated for proper footwear and sizing at least once within 12 months

Definition:

Evaluation for Proper Footwear – Includes a foot examination documenting the vascular, neurological, dermatological, and structural/biomechanical findings. The foot should be measured using a standard measuring device, and counseling on appropriate footwear should be based on risk categorization.

NUMERATOR NOTE: *To determine performance met the footwear evaluation could be performed and documented on the date of the denominator eligible encounter or within the 12 month lookback period from the date of the denominator eligible encounter. Denominator Exception(s) are determined on the date of the denominator eligible encounter.*

Numerator Options:

Performance Met: Footwear evaluation performed and documented **(G8410)**

OR

Denominator Exception: Clinician documented that patient was not an eligible candidate for footwear evaluation measure **(G8416)**

OR

Performance Not Met: Footwear evaluation was not performed **(G8415)**

RATIONALE:

Foot ulceration is the most common single precursor to lower extremity amputations among persons with diabetes. Shoe trauma, in concert with loss of protective sensation and concomitant foot deformity, is the leading event precipitating foot ulceration in persons with diabetes. Treatment of infected foot wounds accounts for up to one-quarter of all inpatient hospital admissions for people with diabetes in the United States. Peripheral sensory neuropathy in the absence of perceived trauma is the primary factor leading to diabetic foot ulcerations.

Approximately 45-60% of all diabetic ulcerations are purely neuropathic. In people with diabetes, 22.8% have foot problems such as amputations and numbness compared with 10% of non-diabetics. Over the age of 40 years old, 30% of people with diabetes have loss of sensation in their feet.

CLINICAL RECOMMENDATION STATEMENTS:

The multifactorial etiology of diabetic foot ulcers is evidenced by the numerous pathophysiologic pathways that can potentially lead to this disorder. Among these are two common mechanisms by which foot deformity and neuropathy may induce skin breakdown in persons with diabetes. The first mechanism of injury refers to prolonged low pressure over a bony prominence (i.e., bunion or hammertoe deformity). This generally causes wounds over the medial, lateral, and dorsal aspects of the forefoot and is associated with tight or ill-fitting shoes. The other common mechanism of ulceration involves prolonged repetitive moderate stress. (ACFAS Guidelines; American Diabetes Association Standards of Medical Care in Diabetes - 2023)

References

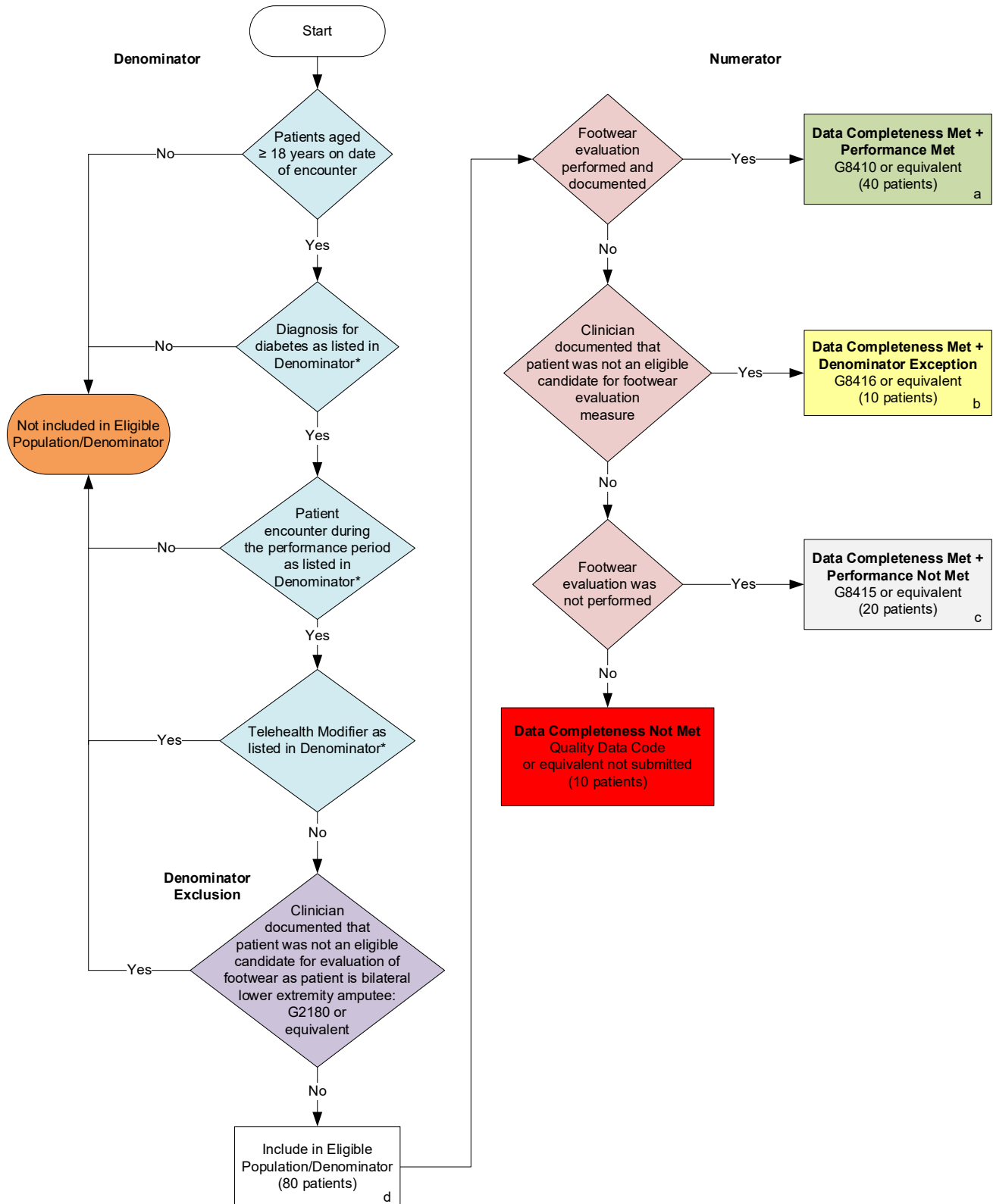
Patients may be eligible for “Therapeutic Shoes for Persons with Diabetes.” For more information visit the [CGS and Noridian LCD](#) and/or the [CGS and Noridian Policy Article](#).

COPYRIGHT:

This measure is owned by the American Podiatric Medical Association (APMA), 2023. CPT® contained in the Measure specifications is copyright 2004-2023 American Medical Association. ICD-10 is copyright 2023 World Health Organization. All Rights Reserved.

**2024 Clinical Quality Measure Flow for Quality ID #127:
Diabetes Mellitus: Diabetic Foot and Ankle Care, Ulcer Prevention – Evaluation of Footwear**

Disclaimer: Refer to the measure specification for specific coding and instructions to submit this measure.



SAMPLE CALCULATIONS

Data Completeness=

$$\frac{\text{Performance Met (a=40 patients)} + \text{Denominator Exception (b=10 patients)} + \text{Performance Not Met (c=20 patients)}}{\text{Eligible Population / Denominator (d=80 patients)}} = \frac{70 \text{ patients}}{80 \text{ patients}} = 87.50\%$$

Performance Rate=

$$\frac{\text{Performance Met (a=40 patients)}}{\text{Data Completeness Numerator (70 patients) – Denominator Exception (b=10 patients)}} = \frac{40 \text{ patients}}{60 \text{ patients}} = 66.67\%$$

*See the posted measure specification for specific coding and instructions to submit this measure.

NOTE: Submission Frequency: Patient-Process

CPT only copyright 2023 American Medical Association. All rights reserved.
The measure diagrams were developed by CMS as a supplemental resource to be used in conjunction with the measure specifications. They should not be used alone or as a substitution for the measure specification.

v8

**2024 Clinical Quality Measure Flow Narrative for Quality ID #127:
Diabetes Mellitus: Diabetic Foot and Ankle Care, Ulcer Prevention – Evaluation of Footwear**

Disclaimer: Refer to the measure specification for specific coding and instructions to submit this measure.

1. Start with Denominator
2. Check *Patients aged greater than or equal to 18 years on date of encounter*:
 - a. If *Patients aged greater than or equal to 18 years on date of encounter* equals No, do not include in *Eligible Population/Denominator*. Stop processing.
 - b. If *Patients aged greater than or equal to 18 years on date of encounter* equals Yes, proceed to check *Diagnosis for diabetes as listed in Denominator**.
3. Check *Diagnosis for diabetes as listed in Denominator**:
 - a. If *Diagnosis for diabetes as listed in Denominator** equals No, do not include in *Eligible Population/Denominator*. Stop processing.
 - b. If *Diagnosis for diabetes as listed in Denominator** equals Yes, proceed to check *Patient encounter during the performance period as listed in Denominator**.
4. Check *Patient encounter during the performance period as listed in Denominator**:
 - a. If *Patient encounter during the performance period as listed in Denominator** equals No, do not include in *Eligible Population/Denominator*. Stop processing.
 - b. If *Patient encounter during the performance period as listed in Denominator** equals Yes, proceed to check *Telehealth Modifier as listed in Denominator**.
5. Check *Telehealth Modifier as listed in Denominator**:
 - a. If *Telehealth Modifier as listed in Denominator** equals Yes, do not include in *Eligible Population/Denominator*. Stop processing.
 - b. If *Telehealth Modifier as listed in Denominator** equals No, proceed to check *Clinician documented that patient was not an eligible candidate for evaluation of footwear as patient is bilateral lower extremity amputee*.
6. Check *Clinician documented that patient was not an eligible candidate for evaluation of footwear as patient is bilateral lower extremity amputee*:
 - a. If *Clinician documented that patient was not an eligible candidate for evaluation of footwear as patient is bilateral lower extremity amputee* equals Yes, do not include in *Eligible Population/Denominator*. Stop processing.
 - b. If *Clinician documented that patient was not an eligible candidate for evaluation of footwear as patient is bilateral lower extremity amputee* equals No, include in *Eligible Population/Denominator*.
7. Denominator Population:

- Denominator Population is all Eligible Patients in the Denominator. Denominator is represented as Denominator in the Sample Calculation listed at the end of this document. Letter d equals 80 patients in the Sample Calculation.
8. Start Numerator
 9. Check *Footwear evaluation performed and documented*:
 - a. If *Footwear evaluation performed and documented* equals Yes, include in *Data Completeness Met and Performance Met*.
 - *Data Completeness Met and Performance Met* letter is represented in the Data Completeness and Performance Rate in the Sample Calculation listed at the end of this document. Letter a equals 40 patients in the Sample Calculation.
 - b. If *Footwear evaluation performed and documented* equals No, proceed to check *Clinician documented that patient was not an eligible candidate for footwear evaluation measure*.
 10. Check *Clinician documented that patient was not an eligible candidate for footwear evaluation measure*:
 - a. If *Clinician documented that patient was not an eligible candidate for footwear evaluation measure* equals Yes, include in *Data Completeness Met and Denominator Exception*.
 - *Data Completeness Met and Denominator Exception* letter is represented in the Data Completeness and Performance Rate in the Sample Calculation listed at the end of this document. Letter b equals 10 patients in the Sample Calculation.
 - b. If *Clinician documented that patient was not an eligible candidate for footwear evaluation measure* equals No, proceed to check *Footwear evaluation was not performed*.
 11. Check *Footwear evaluation was not performed*:
 - a. If *Footwear evaluation was not performed* equals Yes, include in *Data Completeness Met and Performance Not Met*.
 - *Data Completeness Met and Performance Not Met* letter is represented in the Data Completeness in the Sample Calculation listed at the end of this document. Letter c equals 20 patients in the Sample Calculation.
 - b. If *Footwear evaluation was not performed* equals No, proceed to check *Data Completeness Not Met*.
 12. Check *Data Completeness Not Met*:
 - If *Data Completeness Not Met*, the Quality Data Code or equivalent was not submitted. 10 patients have been subtracted from the Data Completeness Numerator in the Sample Calculation.

Sample Calculations

Data Completeness equals Performance Met (a equals 40 patients) plus Denominator Exception (b equals 10 patients) plus Performance Not Met (c equals 20 patients) divided by Eligible Population/Denominator (d equals 80 patients). All equals 70 patients divided by 80 patients. All equals 87.50 percent.

Performance Rate equals Performance Met (a equals 40 patients) divided by Data Completeness Numerator (70 patients) minus Denominator Exception (b equals 10 patients). All equals 40 patients divided by 60 patients. All equals 66.67 percent.

*See the posted measure specification for specific coding and instructions to submit this measure.

NOTE: Submission Frequency: Patient-Process

The measure diagrams were developed by CMS as a supplemental resource to be used in conjunction with the measure specifications. They should not be used alone or as a substitution for the measure specification.