

Quality ID #282: Dementia: Functional Status Assessment – National Quality Strategy
Domain: Effective Clinical Care

2018 OPTIONS FOR INDIVIDUAL MEASURES:
REGISTRY ONLY

MEASURE TYPE:

Process

DESCRIPTION:

Percentage of patients with dementia for whom an assessment of functional status* was performed at least once in the last 12 months.

INSTRUCTIONS:

This measure is to be submitted a minimum of **once per performance period** for patients with a diagnosis of dementia seen during the performance period. This measure may be submitted by eligible clinicians who perform the quality actions described in the measure based on the services provided and the measure-specific denominator coding.

Measure Submission

The listed denominator criteria is used to identify the intended patient population. The numerator options included in this specification are used to submit the quality actions allowed by the measure. The quality-data codes listed do not need to be submitted for registry submissions; however, these codes may be submitted for those registries that utilize claims data.

DENOMINATOR:

All patients with a diagnosis of dementia

Denominator Criteria (Eligible Cases):

All patients regardless of age

AND

Diagnosis for dementia (ICD-10-CM): A52.17, A81.00, A81.01, A81.89, B20, F01.50, F01.51, F02, F02.80, F02.81, F03.90, F03.91, F05, F10.27, G20, G30.0, G30.1, G30.8, G30.9, G31.01, G31.09, G31.83, G31.85, G31.89, G94

AND

Patient encounter during the performance period (CPT): 90791, 90792, 90832, 90833, 90834, 90836, 90837, 90838, 96116, 96118, 96119, 96120, 96150, 96151, 96152, 96154, 96155, 97165, 97166, 97167, 97168, 99201, 99202, 99203, 99204, 99205, 99211, 99212, 99213, 99214, 99215, 99221, 99222, 99223, 99231, 99232, 99233, 99238, 99239, 99251, 99252, 99253, 99254, 99255, 99304, 99305, 99306, 99307, 99308, 99309, 99310, 99324, 99325, 99326, 99327, 99328, 99334, 99335, 99336, 99337, 99339, 99340, 99341, 99342, 99343, 99344, 99345, 99347, 99348, 99349, 99350, 99487, 99489, 99490, 99497, 99498

WITHOUT

Telehealth Modifier: GQ, GT, 95, POS 02

NUMERATOR:

Patients for whom an assessment of functional status* was performed at least once in the last 12 months.

*Functional status is assessed by use of a validated tool, direct assessment of the patient, or by querying a knowledgeable informant. A direct assessment of functional status includes an evaluation of the patient's ability to perform instrumental activities of daily living (IADL) (i.e., cleaning, money management, and medication management, transportation, cleaning, and cooking) and basic activities of daily living (ADL) (i.e., grooming, bathing, dressing, eating, toileting, gait, and transferring).

NUMERATOR NOTE: The 12 month look back period is defined as 12 months from the date of the denominator eligible encounter. Denominator Exception(s) are determined on the date of the denominator eligible encounter. Documentation of why an assessment could not be completed due to medical reasons such as advanced staging of dementia in combination with a lack of a knowledgeable informant would meet the measure criteria.

Numerator Instructions: Functional status can be assessed by direct examination of the patient or knowledgeable informant. An assessment of functional status should include, at a minimum, an evaluation of the patient's ability to perform instrumental activities of daily living (IADL) and basic activities of daily living (ADL). Functional status can also be assessed using one of a number of available valid and reliable instruments available from the medical literature. Examples include, but are not limited to:

- Lawton Instrumental Activities of Daily Living Scale
- Barthel ADL Index
- Katz Index of Independence in Activities of Daily Living
- Functional Activities Questionnaire

Numerator Options:

Performance Met:

Functional status performed once in the last 12 months (G9916)

OR

Denominator Exception:

Documentation of medical reason(s) for not performing functional status (e.g., patient is severely impaired and caregiver knowledge is limited, other medical reason) (G9917)

OR

Performance Not Met:

Functional status not performed, reason not otherwise specified (G9918)

RATIONALE:

Dementia is characterized by cognitive deficits that cause functional impairment compromising basic and instrumental activities of daily living. Functional decline for dementia patients is progressive and continuous and typically marked by decline in instrumental activities of daily living followed by a slower decline in basic activities of daily living. (Lechowski L et al. Dement Geriatr Cogn Disord. 2010; 29(1):46-54.) Functional impairment is the main factor negatively impacting quality of life in patients with dementia including reported links to the development of apathy and depression. (Andersen CK, et al. Health Qual Life Outcomes. 2004, 2:52., Starkstein SE et al. Am J Psychiatry. 2005;162:2086-2093., Boyle PA, et al. Am J Geriatr Psychiatry. 2003 Mar-Apr;11(2): 214-21.) In addition, decline in basic activities of daily living is an important risk factor for institutionalization and a strong predictor of decreased survival in dementia patients. (Steehan E, et al. Arch Psychiatr Nurs. 1997; 11, 295-303., Bracco L, et al. Arch Neurol. 1994 Dec; 51(12): 1213-9.) Initial and ongoing assessments of functional status should be conducted to determine baseline level of functioning, monitor changes over time, and to identify strategies to maximize patient's independence.

CLINICAL RECOMMENDATION STATEMENTS:

A detailed assessment of functional status may also aid the clinician in documenting and tracking changes over time as well as providing guidance to the patient and caregivers. Functional status is typically described in terms of the patient's ability to perform instrumental activities of daily living such as shopping, writing checks, basic housework, and activities of daily living such as dressing, bathing, feeding, transferring, and maintaining continence. These regular assessments of recent cognitive and functional status provide a baseline for assessing the effect of any intervention, and they improve the recognition and treatment of acute problems, such as delirium. (APA, 2007)

Conduct and document an assessment and monitor changes in daily functioning, including feeding, bathing, dressing, mobility, toileting, continence, and ability to manage finances and medications...Functional assessment includes evaluation of physical, psychological, and socioeconomic domains. Physical functioning may focus on basic activities of daily living (ADLs) that include feeding, bathing, dressing, mobility, and toileting. Assessment of instrumental (or intermediate) activities of daily living (IADLs) addresses more advanced self-care activities, such as shopping, cooking, and managing finances and medications. Standardized assessment instruments such as the Barthel or Katz indices can provide information on the patient's capacity for self-care and independent living. Proxies or patient surrogates can complete a number of these instruments when necessary. The initial assessment of functional abilities is important to determine a baseline to which future functional deficits may be compared. (California Workgroup on Guidelines for Alzheimer's Disease Management, 2008)

COPYRIGHT:

The Measures are not clinical guidelines, do not establish a standard of medical care, and have not been tested for all potential applications.

The Measures, while copyrighted, can be reproduced and distributed, without modification, for noncommercial purposes, e.g., use by health care providers in connection with their practices. Commercial use is defined as the sale, license, or distribution of the Measures for commercial gain, or incorporation of the Measures into a product or service that is sold, licensed or distributed for commercial gain.

Commercial uses of the Measures require a license agreement between the user and the American Medical Association (AMA), [on behalf of the Physician Consortium for Performance Improvement® (PCPI®)] or the American Academy of Neurology Institute (AANI) and the American Psychiatric Association (APA). Neither the AMA, AANI, APA, PCPI, nor its members shall be responsible for any use of the Measures.

The AMA's and PCPI's significant past efforts and contributions to the development and updating of the Measures is acknowledged. AANI and APA are solely responsible for the review and enhancement ("Maintenance") of the Measures as of August 13, 2014.

AANI and APA encourage use of the Measures by other health care professionals, where appropriate.

THE MEASURES AND SPECIFICATIONS ARE PROVIDED "AS IS" WITHOUT WARRANTY OF ANY KIND.

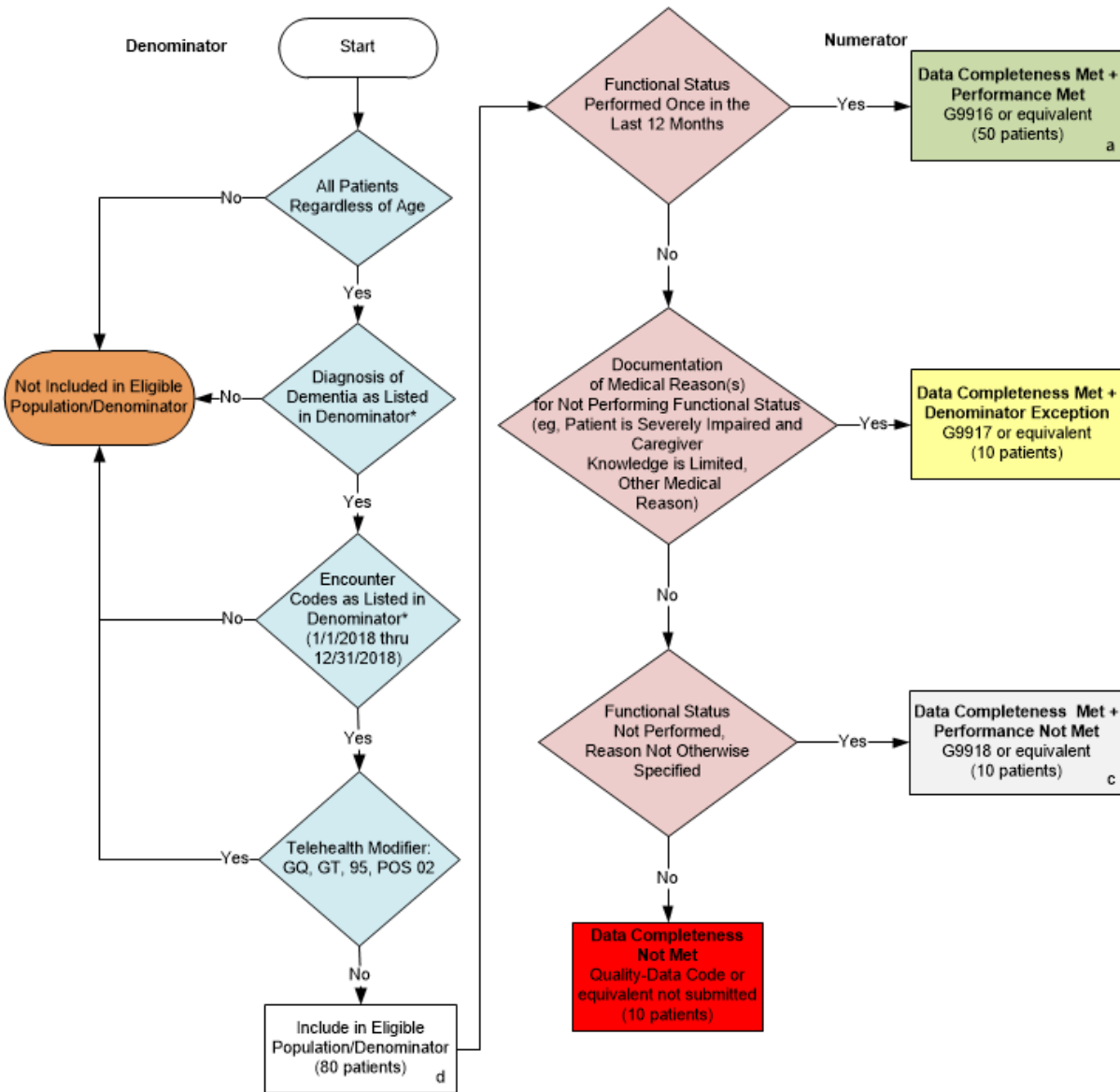
© 2014 American Medical Association, American Academy of Neurology Institute and American Psychiatric Association. All Rights Reserved. Applicable FARS/DFARS Restrictions Apply to Government Use.

Limited proprietary coding is contained in the Measure specifications for convenience. Users of the proprietary code sets should obtain all necessary licenses from the owners of these code sets. The AMA, AANI, APA, the PCPI and its members disclaim all liability for use or accuracy of any Current Procedural Terminology (CPT®) or other coding contained in the specifications.

CPT® contained in the Measures specifications is copyright 2004-2017 American Medical Association.

LOINC® copyright 2004-2017 Regenstrief Institute, Inc. SNOMED CLINICAL TERMS (SNOMED CT®) copyright 2004-2017 College of American Pathologists. All Rights Reserved.

2018 Registry Flow for Quality ID #282: Dementia: Functional Status Assessment



SAMPLE CALCULATIONS:

Data Completeness=

$$\frac{\text{Performance Met (a=50 patients)} + \text{Denominator Exception (b=10 patients)} + \text{Performance Not Met (c=10 patients)}}{\text{Eligible Population / Denominator (d=80 patients)}} = \frac{70 \text{ patients}}{80 \text{ patients}} = 87.50\%$$

Performance Rate=

$$\frac{\text{Performance Met (a=50 patients)}}{\text{Data Completeness Numerator (70 patients) - Denominator Exception (b=10 patients)}} = \frac{50 \text{ patients}}{60 \text{ patients}} = 83.33\%$$

* See the posted Measure Specification for specific coding and instructions to support this measure.

NOTE: Submission Frequency: Patient-process

CPT only copyright 2017 American Medical Association. All rights reserved.
 The measure diagrams were developed by CMS as a supplemental resource to be used in conjunction with the measure specifications. They should not be used alone or as a substitution for the measure specification.

v2

**2018 Registry Flow for Quality ID
#282: Dementia: Functional Status Assessment**

Please refer to the specific section of the Specification to identify the denominator and numerator information for use in submitting this Individual Specification. This flow is for registry-data submission.

1. Start with Denominator
2. Check Patient Diagnosis:
 - a. If Diagnosis of Dementia as Listed in the Denominator equals No, do not include in Eligible Patient Population. Stop Processing.
 - b. If Diagnosis of Dementia as Listed in the Denominator equals Yes, proceed to check Current Encounter Performed.
3. Check Encounter Performed:
 - a. If Encounter as Listed in the Denominator equals No, do not include in Eligible Patient Population. Stop Processing.
 - b. If Encounter as Listed in the Denominator equals Yes, proceed to check Telehealth Modifier.
4. Check Telehealth Modifier:
 - a. If Telehealth Modifier equals Yes, do not include in Eligible Patient Population. Stop Processing.
 - b. If Telehealth Modifier equals No, include in Eligible Population.
5. Denominator Population:
 - a. Denominator population is all Eligible Patients in the denominator. Denominator is represented as Denominator in the Sample Calculation listed at the end of this document. Letter d equals 80 patients in the Sample Calculation.
6. Start Numerator
7. Check Functional Status for Dementia Assessed and Results Reviewed:
 - a. If Functional Status for Dementia Assessed and Results Reviewed equals Yes, include in Data Completeness Met and Performance Met.
 - b. Data Completeness Met and Performance Met is represented in the Data Completeness and Performance Rate in the Sample Calculation listed at the end of this document. Letter a equals 50 patients in the Sample Calculation.
 - c. If Functional Status for Dementia Assessed and Results Reviewed equals No, proceed to Documentation of Medical Reason(s) for Not Assessing and Reviewing Functional Status for Dementia (e.g., Patient is Severely Impaired and Caregiver Knowledge is Limited, Other Medical Reason).
8. Check Documentation of Medical Reason(s) for Not Assessing and Reviewing Functional Status for Dementia (e.g., Patient is Severely Impaired and Caregiver Knowledge is Limited, Other Medical Reason):

- a. If Documentation of Medical Reason(s) for Not Assessing and Reviewing Functional Status for Dementia (e.g., Patient is Severely Impaired and Caregiver Knowledge is Limited, Other Medical Reason) equals Yes, include in Data Completeness Met and Denominator Exception.
 - b. Data Completeness Met and Denominator Exception is represented in the Data Completeness and Performance Rate in the Sample Calculation listed at the end of this document. Letter b equals 10 patients in the Sample Calculation.
 - c. If Documentation of Medical Reason(s) for Not Assessing and Reviewing Functional Status for Dementia (e.g., Patient is Severely Impaired and Caregiver Knowledge is Limited, Other Medical Reason) equals No, proceed to Functional Status for Dementia Not Assessed and Results Not Reviewed, Reason Not Otherwise Specified.
9. Check Functional Status for Dementia Not Assessed and Results Not Reviewed, Reason Not Otherwise Specified:
- a. If Functional Status for Dementia Not Assessed and Results Not Reviewed, Reason Not Otherwise Specified equals Yes, include in Data Completeness Met and Performance Not Met.
 - b. Data Completeness Met and Performance Not Met is represented in the Data Completeness in the Sample Calculation listed at the end of this document. Letter c equals 10 patients in the Sample Calculation.
 - c. If Functional Status for Dementia Not Assessed and Results Not Reviewed, Reason Not Otherwise Specified equals No, proceed to Data Completeness Not Met.
10. Check Data Completeness Not Met:
- a. If Data Completeness Not Met equals No, Quality Data Code or equivalent not submitted. 10 patients have been subtracted from the Data Completeness Numerator in the Sample Calculation.

SAMPLE CALCULATIONS:

Data Completeness=

$$\frac{\text{Performance Met (a=50 patients)} + \text{Denominator Exception (b=10 patients)} + \text{Performance Not Met (c=10 patients)}}{\text{Eligible Population / Denominator (d=80 patients)}} = \frac{70 \text{ patients}}{80 \text{ patients}} = 87.50\%$$

Performance Rate=

$$\frac{\text{Performance Met (a=50 patients)}}{\text{Data Completeness Numerator (70 patients) - Denominator Exception (b=10 patients)}} = \frac{50 \text{ patients}}{60 \text{ patients}} = 83.33\%$$