

**Quality ID #118 (NQF 0066): Coronary Artery Disease (CAD): Angiotensin-Converting Enzyme (ACE) Inhibitor or Angiotensin Receptor Blocker (ARB) Therapy - Diabetes or Left Ventricular Systolic Dysfunction (LVEF < 40%) – National Quality Strategy Domain: Effective Clinical Care**

**2018 OPTIONS FOR INDIVIDUAL MEASURES:  
REGISTRY ONLY**

**MEASURES TYPE:**  
Process

**DESCRIPTION:**

Percentage of patients aged 18 years and older with a diagnosis of coronary artery disease seen within a 12 month period who also have diabetes OR a current or prior Left Ventricular Ejection Fraction (LVEF) < 40% who were prescribed ACE inhibitor or ARB therapy

**INSTRUCTIONS:**

This measure is to be submitted a minimum of **once per performance period** for all patients with CAD seen during the performance period. This measure may be submitted by eligible clinicians who perform the quality actions described in the measure for the primary management of patients with CAD based on the services provided and the measure-specific denominator coding. Only patients who had at least two denominator eligible visits during the performance period will be counted for Submission Criteria 1 and 2 of this measure.

**Measure Submission:**

The listed denominator criteria is used to identify the intended patient population. The numerator options included in this specification are used to submit the quality actions allowed by the measure. The quality-data codes listed do not need to be submitted for registry-based submissions; however, these codes may be submitted for those registries that utilize claims data.

**THERE ARE TWO SUBMISSION CRITERIA FOR THIS MEASURE:**

- 1) Patients who are 18 years and older with a diagnosis of CAD with LVEF < 40%

**OR**

- 2) Patients who are 18 years and older with a diagnosis of CAD who have diabetes

The eligible clinician should submit data on one of the submission criteria, depending on the clinical findings. If the patient has CAD and LVSD (without a diagnosis of Diabetes), use Denominator Submission Criteria 1. If the patient has CAD and Diabetes, use Denominator Submission Criteria 2. If the patient has both diabetes and LVSD, the eligible professional may submit quality data for Submission Criteria 2 and this will count as appropriate submission for this patient.

**SUBMISSION CRITERIA 1: ALL PATIENTS WITH A DIAGNOSIS OF CAD WITH LVEF < 40% (WITHOUT A DIAGNOSIS OF DIABETES)**

**DENOMINATOR (SUBMISSION CRITERIA 1):**

All patients aged 18 years and older with a diagnosis of coronary artery disease seen within a 12 month period who also have a current or prior LVEF < 40%

***DENOMINATOR NOTE:** \*Signifies that this CPT Category I code is a non-covered service under the Medicare Part B Physician Fee Schedule (PFS). These non-covered services should be counted in the denominator population for registry-based measures.*

**Definition:**

LVEF < 40% corresponds to qualitative documentation of moderate dysfunction or severe dysfunction

**Denominator Criteria (Eligible Cases):**

Patients aged ≥ 18 years on date of encounter

**AND**

**Diagnosis for coronary artery disease (ICD-10-CM):** I20.0, I20.1, I20.8, I20.9, I21.01, I21.02, I21.09, I21.11, I21.19, I21.21, I21.29, I21.3, I21.4, I22.0, I22.1, I22.2, I22.8, I22.9, I24.0, I24.1, I24.8, I24.9, I25.10, I25.110, I25.111, I25.118, I25.119, I25.2, I25.5, I25.6, I25.700, I25.701, I25.708, I25.709, I25.710, I25.711, I25.718, I25.719, I25.720, I25.721, I25.728, I25.729, I25.730, I25.731, I25.738, I25.739, I25.750, I25.751, I25.758, I25.759, I25.760, I25.761, I25.768, I25.769, I25.790, I25.791, I25.798, I25.799, I25.810, I25.811, I25.812, I25.82, I25.83, I25.89, I25.9, Z95.1, Z95.5, Z98.61

**AND**

**Patient encounter during the performance period (CPT):** 99201, 99202, 99203, 99204, 99205, 99212, 99213, 99214, 99215, 99241\*, 99242\*, 99243\*, 99244\*, 99245\*, 99304, 99305, 99306, 99307, 99308, 99309, 99310, 99324, 99325, 99326, 99327, 99328, 99334, 99335, 99336, 99337, 99341, 99342, 99343, 99344, 99345, 99347, 99348, 99349, 99350

**WITHOUT**

Telehealth Modifier: GQ, GT, 95, POS 02

**AND**

Two Denominator Eligible Visits

**AND**

Left Ventricular Ejection Fraction (LVEF) < 40% or documentation of moderately or severely depressed left ventricular systolic function: G8934

**NUMERATOR (SUBMISSION CRITERIA 1):**

Patients who were prescribed ACE inhibitor or ARB therapy

**Definition:**

**Prescribed** – May include prescription given to the patient for ACE inhibitor or ARB therapy at one or more visits in the measurement period OR patient already taking ACE inhibitor or ARB therapy as documented in current medication list.

**NUMERATOR NOTE:** *Eligible clinicians who have given a prescription to the patient for or whose patient is currently taking a combination medication therapy, which contains either an angiotensin converting enzyme (ACE) inhibitor or angiotensin receptor blocker (ARB) (e.g., angiotensin receptor neprilysin inhibitor [ARNI, sacubitril/valsartan], ACEI+diuretic, ARB+diuretic, ACEI+calcium channel blocker) would meet performance for this measure.*

**Numerator Options:**

***Performance Met:***

Clinician prescribed angiotensin converting enzyme (ACE) inhibitor or angiotensin receptor blocker (ARB) therapy (**G8935**)

**OR**

***Denominator Exception:***

Clinician documented that patient was not an eligible candidate for angiotensin converting enzyme (ACE) inhibitor or angiotensin receptor blocker (ARB) therapy (e.g., allergy, intolerance, pregnancy, renal failure due to ACE inhibitor, diseases of the aortic or mitral valve, other medical reasons) or (e.g., patient declined, other patient reasons) or (e.g., lack of drug

availability, other reasons attributable to the health care system) (G8936)

OR

*Performance Not Met:*

Clinician did not prescribe angiotensin converting enzyme (ACE) inhibitor or angiotensin receptor blocker (ARB) therapy, reason not given (G8937)

OR

**SUBMISSION CRITERIA 2: ALL PATIENTS WITH A DIAGNOSIS OF CAD WHO HAVE DIABETES**

**DENOMINATOR (SUBMISSION CRITERIA 2):**

All patients aged 18 years and older with a diagnosis of coronary artery disease seen within a 12 month period who also have diabetes

***DENOMINATOR NOTE:** \*Signifies that this CPT Category I code is a non-covered service under the Medicare Part B Physician Fee Schedule (PFS). These non-covered services should be counted in the denominator population for registry-based measures.*

**Definition:**

If a patient has both diabetes and LVSD, submission criteria #2 will count as appropriate submission for this patient.

**Denominator Criteria (Eligible Cases):**

Patients aged  $\geq$  18 years on date of encounter

**AND**

**Diagnosis for coronary artery disease (ICD-10-CM):** I20.0, I20.1, I20.8, I20.9, I21.01, I21.02, I21.09, I21.11, I21.19, I21.21, I21.29, I21.3, I21.4, I22.0, I22.1, I22.2, I22.8, I22.9, I24.0, I24.1, I24.8, I24.9, I25.10, I25.110, I25.111, I25.118, I25.119, I25.2, I25.5, I25.6, I25.700, I25.701, I25.708, I25.709, I25.710, I25.711, I25.718, I25.719, I25.720, I25.721, I25.728, I25.729, I25.730, I25.731, I25.738, I25.739, I25.750, I25.751, I25.758, I25.759, I25.760, I25.761, I25.768, I25.769, I25.790, I25.791, I25.798, I25.799, I25.810, I25.811, I25.812, I25.82, I25.83, I25.89, I25.9, Z95.1, Z95.5, Z98.61

**AND**

**Diagnosis for diabetes (ICD-10-CM):** E10.10, E10.11, E10.21, E10.22, E10.29, E10.319, E10.321, E10.3211, E10.3212, E10.3213, E10.3219, E10.329, E10.3291, E10.3292, E10.3293, E10.3299, E10.331, E10.3311, E10.3312, E10.3313, E10.3319, E10.339, E10.3391, E10.3392, E10.3393, E10.3399, E10.341, E10.3411, E10.3412, E10.3413, E10.3419, E10.349, E10.3491, E10.3492, E10.3493, E10.3499, E10.351, E10.3511, E10.3512, E10.3513, E10.3519, E10.3521, E10.3522, E10.3523, E10.3529, E10.3531, E10.3532, E10.3533, E10.3539, E10.3541, E10.3542, E10.3543, E10.3549, E10.3551, E10.3552, E10.3553, E10.3559, E10.3591, E10.3592, E10.3593, E10.3599, E10.36, E10.37X1, E10.37X2, E10.37X3, E10.37X9, E10.39, E10.40, E10.41, E10.42, E10.43, E10.44, E10.49, E10.51, E10.52, E10.59, E10.610, E10.618, E10.620, E10.621, E10.622, E10.628, E10.630, E10.638, E10.641, E10.649, E10.65, E10.69, E10.8, E10.9, E11.00, E11.01, E11.10, E11.11, E11.21, E11.22, E11.29, , E11.3X11 E11.319, E11.37X1, E11.37X2, E11.37X3, E11.37X9, E11.321, E11.3211, E11.3212, E11.3213, E11.3219, E11.329, E11.3291, E11.3292, E11.3293, E11.3299, E11.331, E11.3311, E11.3312, E11.3313, E11.3319, E11.3391, E11.3392, E11.3393, ,E11.3399, E11.341, E11.3411, E11.3412, E11.3413, , E11.3419, E11.349, E11.3491, E11.3492, E11.3493, E11.3499, E11.351, E11.3511, E11.3512, E11.3513, E11.3519, E11.3521, E11.3522, E11.3523, E11.3529, E11.3531, E11.3532, E11.3533, E11.3539, E11.3541, E11.3542, E11.3543, E11.3549, E11.3551, E11.3552, E11.3553, E11.3559, E11.359, E11.3591, E11.3592, E11.3593, E11.3599, E11.36, E11.39, E11.40, E11.41, E11.42, E11.43, E11.44, E11.49, E11.51, E11.52, E11.59, E11.610, E11.618, E11.620, E11.621,

E11.622, E11.628, E11.630, E11.638, E11.641, E11.649, E11.65, E11.69, E11.8, E11.9, E13.00, E13.01, E13.10, E13.11, E13.21, E13.22, E13.29, E13.311, E13.319, E13.321, E13.3211, E13.3212, E13.3213, E13.3219, E13.329, E13.3291, E13.3292, E13.3293, E13.3299, E13.331, E13.3311, E13.3312, E13.3313, E13.3319, E13.339, E13.3391, E13.3392, E13.3393, E13.3399, E13.341, E13.3411, E13.3412, E13.3413, E13.3419, E13.349, E13.3491, E13.3492, E13.3493, E13.3499, E13.351, E13.3511, E13.3512, E13.3513, E13.3519, E13.3521, E13.3522, E13.3523, E13.3529, E13.3531, E13.3532, E13.3533, E13.3539, E13.3541, E13.3542, E13.3543, E13.3549, E13.3551, E13.3552, E13.3553, E13.3559, E13.359, E13.3591, E13.3592, E13.3593, E13.3599, E13.36, E13.37X1, E13.37X2, E13.37X3, E13.37X9, E13.39, E13.40, E13.41, E13.42, E13.43, E13.44, E13.49, E13.51, E13.52, E13.59, E13.610, E13.618, E13.620, E13.621, E13.622, E13.628, E13.630, E13.638, E13.641, E13.649, E13.65, E13.69, E13.8, E13.9, O24.011, O24.012, O24.013, O24.019, O24.02, O24.03, O24.111, O24.112, O24.113, O24.119, O24.12, O24.13, O24.311, O24.312, O24.313, O24.319, O24.32, O24.33, O24.811, O24.812, O24.813, O24.819, O24.82, O24.83

**AND**

**Patient encounter during the performance period (CPT):** 99201, 99202, 99203, 99204, 99205, 99212, 99213, 99214, 99215, 99241\*, 99242\*, 99243\*, 99244\*, 99245\*, 99304, 99305, 99306, 99307, 99308, 99309, 99310, 99324, 99325, 99326, 99327, 99328, 99334, 99335, 99336, 99337, 99341, 99342, 99343, 99344, 99345, 99347, 99348, 99349, 99350

**WITHOUT**

Telehealth Modifier: GQ, GT, 95, POS 02

**AND**

**Two Denominator Eligible Visits**

**NUMERATOR (SUBMISSION CRITERIA 2):**

Patients who were prescribed ACE inhibitor or ARB therapy

**Definition:**

**Prescribed** – May include prescription given to the patient for ACE inhibitor or ARB therapy at one or more visits in the measurement period OR patient already taking ACE inhibitor or ARB therapy as documented in current medication list.

**NUMERATOR NOTE:** *Eligible clinicians who have given a prescription to the patient for or whose patient is currently taking a combination medication therapy, which contains either an angiotensin converting enzyme (ACE) inhibitor or angiotensin receptor blocker (ARB) (e.g., angiotensin receptor neprilysin inhibitor [ARNI, sacubitril/valsartan], ACEI+diuretic, ARB+diuretic, ACEI+calcium channel blocker) would meet performance for this measure.*

**Numerator Options:**

**Performance Met:**

Angiotensin converting enzyme (ACE) inhibitor or angiotensin receptor blocker (ARB) therapy prescribed (**G8473**)

**OR**

**Denominator Exception:**

Angiotensin converting enzyme (ACE) inhibitor or angiotensin receptor blocker (ARB) therapy not prescribed for reasons documented by the clinician (e.g., allergy, intolerance, pregnancy, renal failure due to ACE inhibitor, diseases of the aortic or mitral valve, other medical reasons) or (e.g., patient declined, other patient reasons) or (e.g., lack of drug

availability, other reasons attributable to the health care system) (G8474)

**OR**

*Performance Not Met:*

Angiotensin converting enzyme (ACE) inhibitor or angiotensin receptor blocker (ARB) therapy not prescribed, reason not given (G8475)

**RATIONALE:**

Nonadherence to cardioprotective medications is prevalent among outpatients with coronary artery disease and can be associated with a broad range of adverse outcomes, including all-cause and cardiovascular mortality, cardiovascular hospitalizations, and the need for revascularization procedures.

In the absence of contraindications, ACE inhibitors or ARBs are recommended for all patients with a diagnosis of coronary artery disease and diabetes or reduced left ventricular systolic function. ACE inhibitors remain the first choice, but ARBs can now be considered a reasonable alternative. Both pharmacologic agents have been shown to decrease the risk of death, myocardial infarction, and stroke. Additional benefits of ACE inhibitors include the reduction of diabetic symptoms and complications for patients with diabetes.

**CLINICAL RECOMMENDATION STATEMENTS:**

The following evidence statements are quoted verbatim from the referenced clinical guidelines.

2012 ACCF/AHA/ACP/AATS/PCNA/SCAI/STS Guideline for the Diagnosis and Management of Patients With Stable Ischemic Heart Disease (SIHD)

**RENIN-ANGIOTENSIN-ALDOSTERONE BLOCKER THERAPY**

ACE inhibitors should be prescribed in all patients with SIHD who also have hypertension, diabetes mellitus, LVEF 40% or less, or CKD, unless contraindicated. (Class I Recommendation Level of Evidence: A)

ARBs are recommended for patients with SIHD who have hypertension, diabetes mellitus, LV systolic dysfunction, or CKD and have indications for, but are intolerant of, ACE inhibitors. (Class I Recommendation, Level of Evidence: A)

**COPYRIGHT:**

Physician performance measures and related data specifications were developed by the American Medical Association (AMA) convened Physician Consortium for Performance Improvement® (PCPI®), the American College of Cardiology (ACC), and the American Heart Association (AHA) to facilitate quality improvement activities by physicians. These performance measures are not clinical guidelines and do not establish a standard of medical care, and have not been tested for all potential applications. While copyrighted, they can be reproduced and distributed, without modification, for noncommercial purposes, e.g., use by health care providers in connection with their practices. Commercial use is defined as the sale, license, or distribution of the performance measures for commercial gain, or incorporation of the performance measures into a product or service that is sold, licensed or distributed for commercial gain. Commercial uses of the measures require a license agreement between the user and the AMA (on behalf of the PCPI) or the ACC or the AHA. Neither the AMA, ACC, AHA, the PCPI nor its members shall be responsible for any use of these measures.

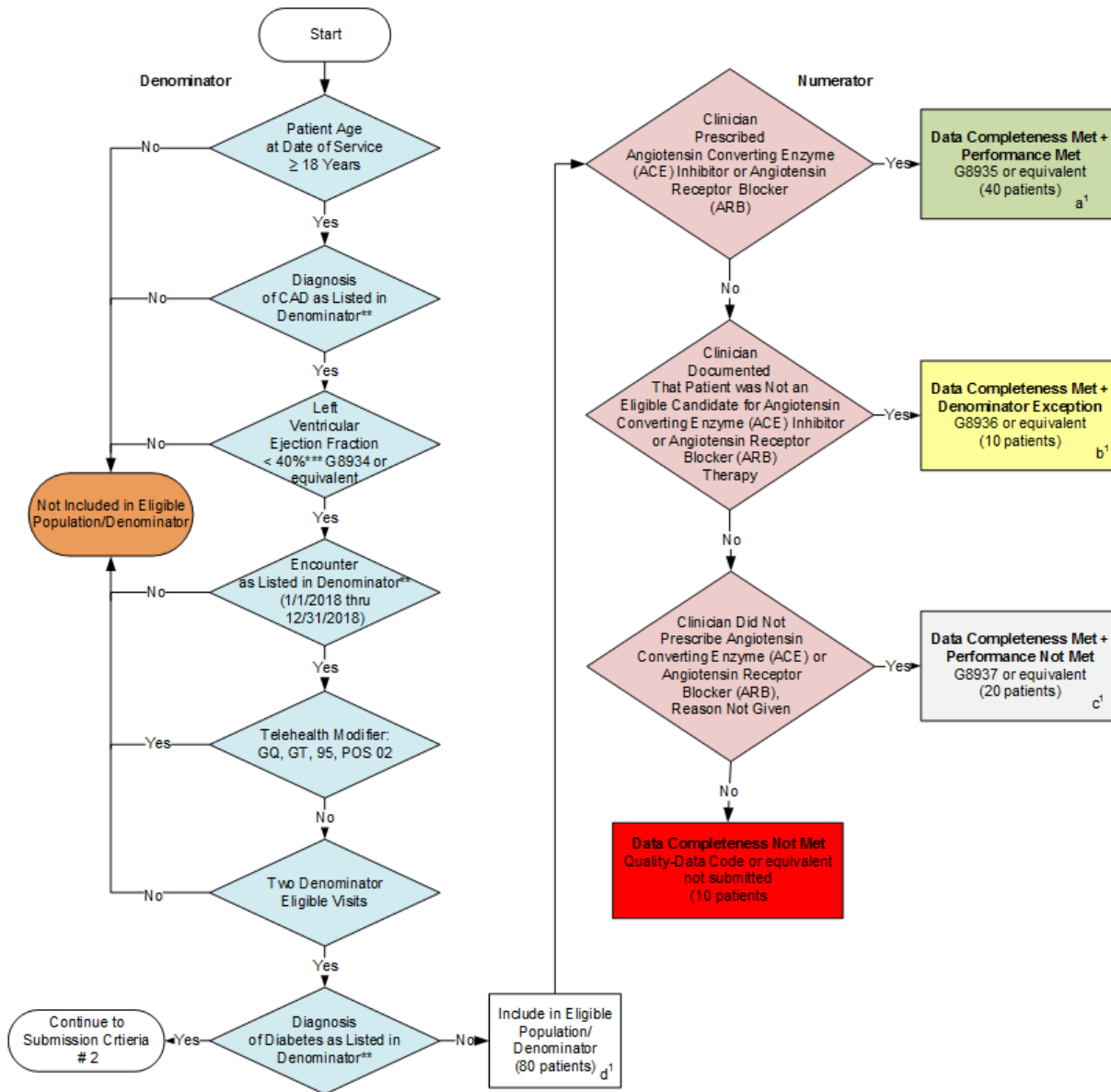
THE MEASURES AND SPECIFICATIONS ARE PROVIDED "AS IS" WITHOUT WARRANTY OF ANY KIND.

© 2014 American College of Cardiology, American Heart Association and American Medical Association. All Rights Reserved.

Limited proprietary coding is contained in the measure specifications for convenience. Users of the proprietary code sets should obtain all necessary licenses from the owners of these code sets. The AMA, the ACC, the AHA, the PCPI and its members disclaim all liability for use or accuracy of any Current Procedural Terminology (CPT®) or other coding contained in the specifications.

CPT® contained in the measures specifications is copyright 2016 American Medical Association. LOINC® copyright 2004-2017 Regenstrief Institute, Inc. This material contains SNOMED CLINICAL TERMS (SNOMED CT®) copyright 2004-2017 International Health Terminology Standards Development Organization. All Rights Reserved. Use of SNOMED CT® is only authorized within the United States.

**2018 Registry Flow for Quality ID #118 NQF #0066: Coronary Artery Disease (CAD):  
Angiotensin-Converting Enzyme (ACE) Inhibitor or Angiotensin Receptor Blocker (ARB)  
Therapy-Diabetes or Left Ventricular Systolic Dysfunction (LVEF < 40%)  
Submission Criteria One**



\*This measure has two submission criteria which should be aggregated to one calculation. Please refer to the sample calculation.

\*\*See the posted Measure Specification for specific coding and instructions to submit this measure.

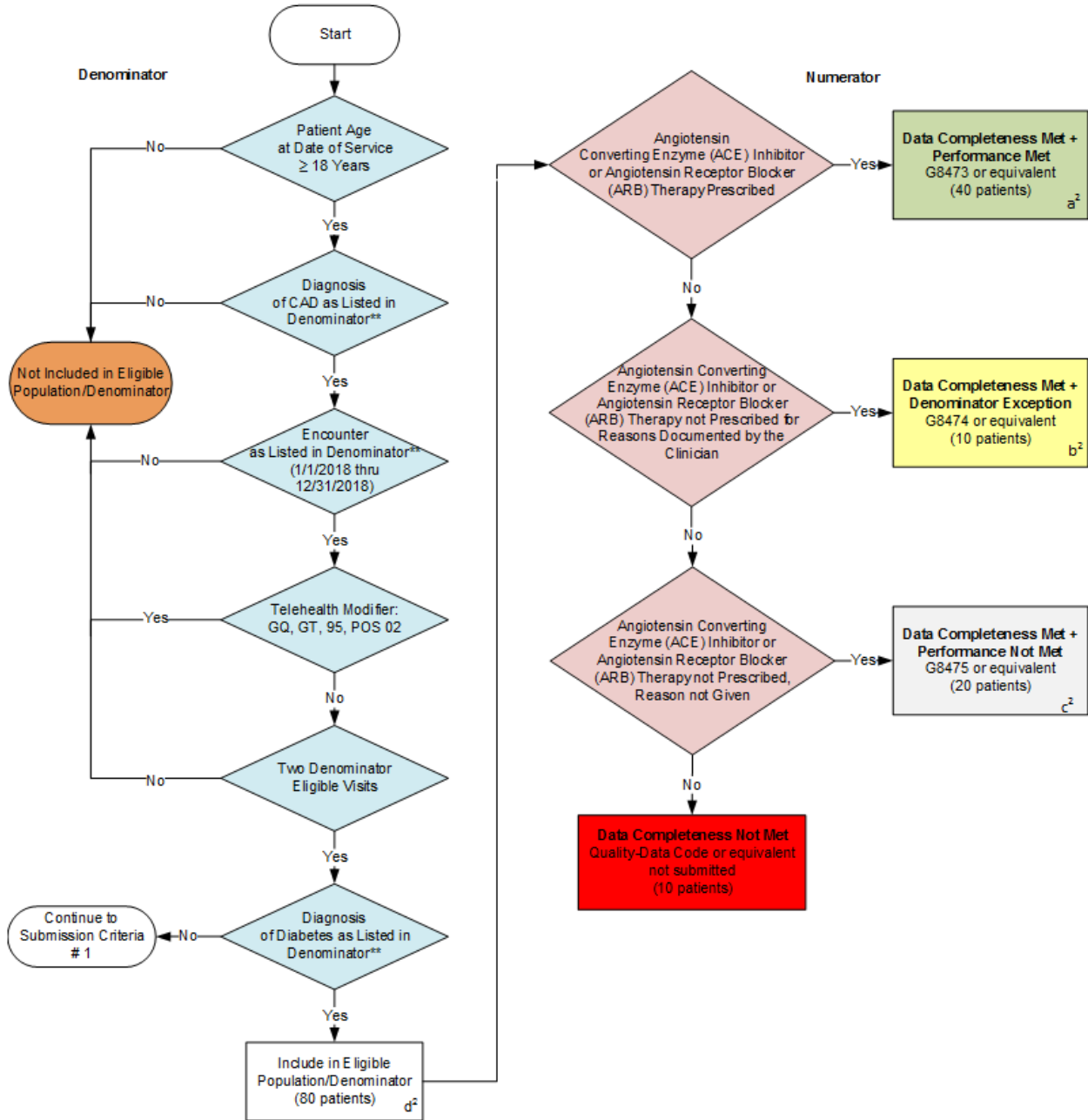
\*\*\*Left Ventricular Ejection Fraction < 40% has been moved to the denominator of this measure to identify the measure's intended eligible population more accurately. This flow should be followed very carefully since the eligible population in this flow differs from the one posted in the Measure Specification.

NOTE: Submission Frequency: Patient-process

CPT only copyright 2017 American Medical Association. All rights reserved. The measure diagrams were developed by CMS as a supplemental resource to be used in conjunction with the measure specifications. They should not be used alone or as a substitution for the measure specification.

v2

**2018 Registry Flow for Quality ID #118 NQF #0066: Coronary Artery Disease (CAD):  
Angiotensin-Converting Enzyme (ACE) Inhibitor or Angiotensin Receptor Blocker (ARB)  
Therapy-Diabetes or Left Ventricular Systolic Dysfunction (LVSD < 40%)  
Submission Criteria Two**



\*This measure has two submission criteria which should be aggregated to one calculation. Please refer to the sample calculation.

\*\*See the posted Measure Specification for specific coding and instructions to submit this measure.

\*\*If a patient is diagnosed with diabetes, Submission option #2 is appropriate for submitting on this patient.

NOTE: Submission Frequency: Patient-process

CPT only copyright 2017 American Medical Association. All rights reserved.  
The measure diagrams were developed by CMS as a supplemental resource to be used in conjunction with the measure specifications. They should not be used alone or as a substitution for the measure specification.

v2



**2018 Registry Flow for Quality ID #118 NQF #0066: Coronary Artery Disease (CAD):  
Angiotensin-Converting Enzyme (ACE) Inhibitor or Angiotensin Receptor Blocker (ARB)  
Therapy-Diabetes or Left Ventricular Systolic Dysfunction (LVSD < 40%)**

**SAMPLE CALCULATIONS:**

Data Completeness=

$$\frac{\text{Performance Met (a}^1+\text{a}^2=80 \text{ patients)} + \text{Denominator Exception (b}^1+\text{b}^2=20 \text{ patients)} + \text{Performance Not Met (c}^1+\text{c}^2=40 \text{ patients)}}{\text{Eligible Population / Denominator (d}^1+\text{d}^2=160 \text{ patients)}} = \frac{140 \text{ pts}}{160 \text{ pts}} = 87.50\%$$

Performance Rate=

$$\frac{\text{Performance Met (a}^1+\text{a}^2=80 \text{ patients)}}{\text{Data Completeness Numerator (140 patients) - Denominator Exception (b}^1+\text{b}^2=20 \text{ patients)}} = \frac{80 \text{ pts}}{120 \text{ pts}} = 66.67\%$$

\*This measure has two submission criteria which should be aggregated to one calculation. Please refer to the sample calculation.

\*\*See the posted Measure Specification for specific coding and instructions to submit this measure.

\*\*If a patient is diagnosed with diabetes, Submission option #2 is appropriate for submitting on this patient.

NOTE: Submission Frequency: Patient-process

CPT only copyright 2017 American Medical Association. All rights reserved.  
The measure diagrams were developed by CMS as a supplemental resource to be used  
in conjunction with the measure specifications. They should not be used alone or as a  
substitution for the measure specification.

## 2018 Registry Flow For Quality ID

### #118 NQF #0066: Coronary Artery Disease (CAD): Angiotensin Converting Enzyme (ACE) Inhibitor or Angiotensin Receptor Blocker (ARB) Therapy – Diabetes or Left Ventricular Systolic Dysfunction (LVEF < 40%)

Please refer to the specific section of the specification to identify the denominator and numerator information for use in submitting this Individual Specification. This flow is for registry data submission.

#### Submission Criteria #1

1. Start with Denominator
2. Check Patient Age:
  - a. If the Age is greater than or equal to 18 years of age on Date of Service and equals No during the measurement period, do not include in Eligible Patient Population. Stop Processing.
  - b. If the Age is greater than or equal to 18 years of age on Date of Service and equals Yes during the measurement period, proceed to check Patient Diagnosis.
3. Check Patient Diagnosis:
  - a. If Diagnosis of CAD as Listed in the Denominator equals No, do not include in Eligible Patient Population. Stop Processing.
  - b. If Diagnosis of CAD as Listed in the Denominator equals Yes, proceed to check Left Ventricular Ejection Fraction < 40%.
4. Check Left Ventricular Ejection Fraction < 40%:
  - a. If Left Ventricular Ejection Fraction < 40% equals No, do not include in Eligible Patient Population. Stop Processing.
  - b. If Left Ventricular Ejection Fraction < 40% equals Yes, proceed to check Encounter Performed.
5. Check Encounter Performed:
  - a. If Encounter as Listed in the Denominator equals No, do not include in Eligible Patient Population. Stop Processing.
  - b. If Encounter as Listed in the Denominator equals Yes, proceed to check Telehealth Modifier.
6. Check Telehealth Modifier:
  - a. If Telehealth Modifier equals Yes, do not include in Eligible Patient Population. Stop Processing.
  - b. If Telehealth Modifier equals No, proceed to check Encounter Performed.
7. Check Encounter Performed:
  - a. If Two Denominator Eligible Visits equals No, do not include in Eligible Patient Population. Stop Processing.
  - b. If Two Denominator Eligible Visits equals Yes, proceed to check Diagnosis.

8. Check Diagnosis of Diabetes as Listed in the Denominator:
  - a. If Diagnosis of Diabetes as Listed in the Denominator equals Yes, proceed to Submission Criteria #2.
  - b. If Diagnosis of Diabetes as Listed in the Denominator equals No, include in the Eligible Population.
9. Denominator Population:
  - a. Denominator population is all Eligible Patients in the denominator. Denominator is represented as Denominator in the Sample Calculation listed at the end of this document. Letter d equals 80 patients in the Sample Calculation.
10. Check Clinician Prescribed Angiotensin Converting Enzyme (ACE) Inhibitor or Angiotensin Receptor Blocker (ARB):
  - a. If Clinician Prescribed Angiotensin Converting Enzyme (ACE) Inhibitor or Angiotensin Receptor Blocker (ARB) equals Yes, include in Data Completeness Met and Performance Met.
  - b. Data Completeness Met and Performance Met letter is represented in the Data Completeness and Performance Rate in the Sample Calculation listed at the end of this document. Letter a1 equals 40 patients in Sample Calculation.
  - c. If Clinician Prescribed Angiotensin Converting Enzyme (ACE) Inhibitor or Angiotensin Receptor Blocker (ARB) equals No, proceed to Clinician Documented that Patient was Not an Eligible Candidate for Angiotensin Converting Enzyme (ACE) Inhibitor or Angiotensin Receptor Blocker (ARB) Therapy.
11. Check Clinician Documented That Patient was not an Eligible Candidate for Angiotensin Converting Enzyme (ACE) Inhibitor or Angiotensin Receptor Blocker (ARB) Therapy:
  - a. If Clinician Documented that Patient was Not an Eligible Candidate for Angiotensin Converting Enzyme (ACE) Inhibitor or Angiotensin Receptor Blocker (ARB) Therapy equals Yes, include in Data Completeness Met and Denominator Exception.
  - b. Data Completeness Met and Denominator Exception letter is represented in the Data Completeness in the Sample Calculation listed at the end of this document. Letter b1 equals 10 patients in the Sample Calculation.
  - c. If Clinician Documented that Patient was Not an Eligible Candidate for Angiotensin Converting Enzyme (ACE) Inhibitor or Angiotensin Receptor Blocker (ARB) Therapy equals No, proceed to Clinician did Not Prescribe Angiotensin Converting Enzyme (ACE) or Angiotensin Receptor Blocker (ARB), Reason Not Given.
12. Check Clinician Did Not Prescribe Angiotensin Converting Enzyme (ACE) or Angiotensin Receptor Blocker (ARB), Reason not Given:
  - a. If Clinician Did Not Prescribe Angiotensin Converting Enzyme (ACE) or Angiotensin Receptor Blocker (ARB), Reason Not Given equals Yes, include in the Data Completeness Met and Performance Not Met.
  - b. Data Completeness Met and Performance Not Met letter is represented in the Data Completeness in the Sample Calculation listed at the end of this document. Letter c1 equals 20 patients in the Sample Calculation.

- c. If Clinician Did Not Prescribe Angiotensin Converting Enzyme (ACE) or Angiotensin Receptor Blocker (ARB), Reason Not Given equals No, proceed to Data Completeness Not Met.

13. Check Data Completeness Not Met:

- a. If Data Completeness Not Met equals No, Quality Data Code or equivalent not submitted. 10 patients have been subtracted from the Data Completeness Numerator in the Sample Calculation.

**SAMPLE CALCULATIONS:**

**Data Completeness=**

$$\frac{\text{Performance Met (a}^1\text{+a}^2\text{=80 patients) + Denominator Exception (b}^1\text{+b}^2\text{=20 patients) + Performance Not Met (c}^1\text{+c}^2\text{=40 patients) = 140 pts.}}{\text{Eligible Population / Denominator (d}^1\text{+d}^2\text{=160 patients)}} = \frac{140 \text{ pts.}}{160 \text{ pts.}} = \mathbf{87.50\%}$$

**Performance Rate=**

$$\frac{\text{Performance Met (a}^1\text{+a}^2\text{=80 patients)}}{\text{Data Completeness Numerator (140 patients) – Denominator Exception (b}^1\text{+b}^2\text{=20 patients) = 120 pts.}} = \frac{80 \text{ pts.}}{120 \text{ pts.}} = \mathbf{66.67\%}$$

## 2017 Registry Flow For Quality ID

### #118 NQF #0066: Coronary Artery Disease (CAD): Angiotensin Converting Enzyme (ACE) Inhibitor or Angiotensin Receptor Blocker (ARB) Therapy – Diabetes or Left Ventricular Systolic Dysfunction (LVEF < 40%)

#### Start Submission Criteria #2

1. Start with Denominator
2. Check Patient Age:
  - a. If the Age is greater than or equal to 18 years of age on Date of Service and equals No during the measurement period, do not include in Eligible Patient Population. Stop Processing.
  - b. If the Age is greater than or equal to 18 years of age on Date of Service and equals Yes during the measurement period, proceed to check Patient Diagnosis.
3. Check Patient Diagnosis:
  - a. If Diagnosis of CAD as Listed in the Denominator equals No, do not include in Eligible Patient Population. Stop Processing.
  - b. If Diagnosis of CAD as Listed in the Denominator equals Yes, proceed to check Encounter Performed.
4. Check Encounter Performed:
  - a. If Encounter as Listed in the Denominator equals No, do not include in Eligible Patient Population. Stop Processing.
  - b. If Encounter as Listed in the Denominator equals Yes, proceed to Check Telehealth Modifier.
5. Check Telehealth Modifier:
  - a. If Telehealth Modifier equals Yes, do not include in Eligible Patient Population. Stop Processing.
  - b. If Telehealth Modifier equals No, proceed to Encounter Performed.
6. Check Encounter Performed:
  - a. If Two Denominator Eligible Visits equals No, do not include in Eligible Patient Population. Stop Processing.
  - b. If Two Denominator Eligible Visits equals Yes, proceed to Diagnosis of Diabetes as Listed in the Denominator.
7. Check Diagnosis of Diabetes as Listed in the Denominator:
  - a. If Diagnosis of Diabetes as Listed in the Denominator equals No, proceed to Submission Criteria #1.
  - b. If Diagnosis of Diabetes as Listed in the Denominator equals Yes, include in the Eligible Population.
8. Denominator Population:

- a. Denominator population is all Eligible Patients in the denominator. Denominator is represented as Denominator in the Sample Calculation listed at the end of this document. Letter d2 equals 80 patients in the Sample Calculation.
9. Check Angiotensin Converting Enzyme (ACE) Inhibitor or Angiotensin Receptor Blocker (ARB) Therapy Prescribed:
    - a. If Angiotensin Converting Enzyme (ACE) Inhibitor or Angiotensin Receptor Blocker (ARB) Therapy Prescribed equals Yes, include in Data Completeness Met and Performance Met.
    - b. Data Completeness Met and Performance Met letter is represented in the Data Completeness and Performance Rate in the Sample Calculation listed at the end of this document. Letter a2 equals 40 patients in Sample Calculation.
    - c. If Angiotensin Converting Enzyme (ACE) Inhibitor or Angiotensin Receptor Blocker (ARB) Therapy Prescribed equals No, proceed to Angiotensin Converting Enzyme (ACE) Inhibitor or Angiotensin Receptor Blocker (ARB) Therapy not Prescribed for Reasons Documented by the Clinician.
  10. Check Angiotensin Converting Enzyme (ACE) Inhibitor or Angiotensin Receptor Blocker (ARB) Therapy not Prescribed for Reasons Documented by the Clinician:
    - a. If Angiotensin Converting Enzyme (ACE) Inhibitor or Angiotensin Receptor Blocker (ARB) Therapy not Prescribed for Reasons Documented by the Clinician equals Yes, include in Data Completeness Met and Denominator Exception.
    - b. Data Completeness Met and Denominator Exception letter is represented in the Data Completeness in the Sample Calculation listed at the end of this document. Letter b2 equals 10 patients in the Sample Calculation.
    - c. If Angiotensin Converting Enzyme (ACE) Inhibitor or Angiotensin Receptor Blocker (ARB) Therapy not Prescribed for Reasons Documented by the Clinician equals No, proceed to Angiotensin Converting Enzyme (ACE) Inhibitor or Angiotensin Receptor Blocker (ARB) Therapy not Prescribed, Reason not Given.
  11. Check Angiotensin Converting Enzyme (ACE) Inhibitor or Angiotensin Receptor Blocker (ARB) Therapy not Prescribed, Reason not Given:
    - a. If Angiotensin Converting Enzyme (ACE) Inhibitor or Angiotensin Receptor Blocker (ARB) Therapy not Prescribed, Reason not Given equals Yes, include in the Data Completeness Met and Performance Not Met.
    - b. Data Completeness Met and Performance Not Met letter is represented in the Data Completeness in the Sample Calculation listed at the end of this document. Letter c2 equals 20 patients in the Sample Calculation.
    - c. If Angiotensin Converting Enzyme (ACE) Inhibitor or Angiotensin Receptor Blocker (ARB) Therapy not Prescribed, Reason not Given equals No, proceed to Data Completeness Not Met.
  12. Check Data Completeness Not Met:
    - a. If Data Completeness Not Met equals No, Quality Data Code or equivalent not submitted. 10 patients have been subtracted from the Data Completeness Numerator in the Sample Calculation.

**SAMPLE CALCULATIONS:**

Data Completeness=

$$\frac{\text{Performance Met (a}^1+\text{a}^2=80 \text{ patients)} + \text{Denominator Exception (b}^1+\text{b}^2=20 \text{ patients)} + \text{Performance Not Met (c}^1+\text{c}^2=40 \text{ patients)}}{\text{Eligible Population / Denominator (d}^1+\text{d}^2=160 \text{ patients)}} = \frac{140 \text{ pts}}{160 \text{ pts}} = 87.50\%$$

Performance Rate=

$$\frac{\text{Performance Met (a}^1+\text{a}^2=80 \text{ patients)}}{\text{Data Completeness Numerator (140 patients) - Denominator Exception (b}^1+\text{b}^2=20 \text{ patients)}} = \frac{80 \text{ pts.}}{120 \text{ pts.}} = 66.67\%$$