

**Quality ID #286: Dementia: Safety Concerns Screening and Mitigation Recommendations or Referral for Patients with Dementia – National Quality Strategy Domain: Patient Safety**

**2018 OPTIONS FOR INDIVIDUAL MEASURES:**  
**REGISTRY ONLY**

**MEASURE TYPE:**  
Process

**DESCRIPTION:**  
Percentage of patients with dementia or their caregiver(s) for whom there was a documented safety concerns screening \* in two domains of risk: 1) dangerousness to self or others and 2) environmental risks; and if safety concerns screening was positive in the last 12 months, there was documentation of mitigation recommendations, including but not limited to referral to other resources or orders for home safety evaluation.

**INSTRUCTIONS:**  
This measure is to be submitted a minimum of **once per performance period** for patients with a diagnosis of dementia seen during the performance period. This measure may be submitted by eligible clinicians who perform the quality actions described in the measure based on the services provided and the measure-specific denominator coding.

**Measure Submission:**  
The listed denominator criteria is used to identify the intended patient population. The numerator options included in this specification are used to submit the quality actions allowed by the measure. The quality-data codes listed do not need to be submitted for registry submissions; however, these codes may be submitted for those registries that utilize claims data.

**DENOMINATOR:**  
All patients with a diagnosis of dementia

**Denominator Criteria (Eligible Cases):**

All patients regardless of age

**AND**

**Diagnosis for dementia (ICD-10-CM):** A52.17, A81.00, A81.01, A81.89, B20, F01.50, F01.51, F02, F02.80, F02.81, F03.90, F03.91, F05, F10.27, G20, G30.0, G30.1, G30.8, G30.9, G31.01, G31.09, G31.83, G31.85, G31.89, G94

**AND**

**Patient encounter during the performance period (CPT):** 90791, 90792, 90832, 90833, 90834, 90836, 90837, 90838, 96116, 96118, 96119, 96120, 96150, 96151, 96152, 96153, 96154, 96155, 97165, 97166, 97167, 97168, 99201, 99202, 99203, 99204, 99205, 99211, 99212, 99213, 99214, 99215, 99231, 99232, 99233, 99238, 99239, 99281, 99282, 99283, 99284, 99285, 99304, 99305, 99306, 99307, 99308, 99309, 99310, 99324, 99325, 99326, 99327, 99328, 99334, 99335, 99336, 99337, 99339, 99340, 99341, 99342, 99343, 99344, 99345, 99347, 99348, 99349, 99350, 99487, 99489, 99490, 99497, 99498

**WITHOUT**

**Telehealth Modifier:** GQ, GT, 95, POS 02

**NUMERATOR:**  
Patients with dementia or their caregiver(s) for whom there was a documented safety concerns screening \* in two domains of risk: 1) dangerousness to self or others and 2) environmental risks; and if safety concerns screening was positive in the last 12 months, there was documentation of mitigation recommendations, including but not limited to referral to other resources or orders for home safety evaluation

**Numerator Instructions:** Mitigation Recommendations should include a discussion with the patient and their caregiver(s) regarding one or more of the following common safety concerns and potential risks to the patient. When appropriate, it should also include a mitigation recommendation or referral or orders for a home safety evaluation.

**Note:** For nursing home patients, different safety concerns might apply.

A number of organizations have developed educational materials that are recommended to aid implementation of the measure. These materials/tools include:

- Alzheimer's Association Safety Topics. Available on the Alzheimer's Association website.
- Alzheimer's Disease Education and Referral Center's Home Safety for the Alzheimer's Patient Available on the National Institute on Aging website.

**Definitions:**

**Caregiver(s)** - Person(s) who provide care to those who need supervision or assistance in illness or disability. They may provide the care in the home, in a hospital, or in an institution. Although caregiver(s) include trained medical, nursing, and other health personnel, the concept also refers to parents, spouses, or other family members, friends, members of the clergy, teachers, social workers, fellow patients.

**Safety Concerns** - Safety concerns include, but are not limited to:

- Fall risk
- Gait/balance
- Medication management
- Financial management
- Home safety risks that could arise from cooking or smoking
- Physical aggression posing threat to self, family caregiver, or others
- Wandering
- Access to firearms or other weapons
- Access to potentially dangerous materials
- Being left alone in home or locked in room
- Inability to respond rapidly to crisis/household emergencies
- Driving
- Operation of hazardous equipment
- Suicidality
- Abuse or neglect

**NUMERATOR NOTE:** The 12 month look back period is defined as 12 months from the date of the denominator eligible encounter. Denominator Exception(s) are determined on the date of the denominator eligible encounter.

**Numerator Options:**

**Performance Met:**

Safety concerns screen provided and if positive then documented mitigation recommendations (G9922)

**OR**

**Performance Met:**

Safety concerns screen provided and negative (G9923)

**OR**

**Denominator Exception:**

Documentation of medical reason(s) for not providing safety concerns screen OR for not providing recommendations, orders or referrals for positive

**OR**

*Performance Not Met:*

screen (e.g., patient in palliative care, other medical reason) (G9924)

Safety concerns screening not provided, reason not otherwise specified (G9925)

**OR**

*Performance Not Met:*

Safety concerns screening positive screen is without provision of mitigation recommendations, including but not limited to referral to other resources. (G9926)

**RATIONALE:**

Screening for safety concerns has been identified as a major unmet need of persons with dementia (3). Caregivers may be caught unprepared and unaware of the unpredictability of patients with dementia. Numerous Internet resources are available to help guide and support family and other informal caregivers. Local organizations, such as senior centers, may have adult day care programs that offer socialization opportunities for the patient and a chance to participate in planned and supervised activities designed to promote well-being, such as music and exercise. Support groups for caregivers and patients alike may be offered at senior centers, providing opportunities for each to develop a mutual support system. Some respite for caregivers may be found through these resources; longer term respite services may be available at local nursing homes to provide caregivers with a temporary rest from caregiving, while the person with dementia continues to receive care in a safe environment. A health care provider who is familiar with the scope of challenges that can confront patients and caregivers and is able to provide guidance to supportive resources that reinforce safety is a valuable resource.

**CLINICAL RECOMMENDATION STATEMENTS:**

The following clinical recommendation statements are quoted verbatim from the referenced clinical guidelines and represent the evidence base for the measure:

- "Recommended assessments include evaluation of suicidality, dangerousness to self and others, and the potential for aggression, as well as evaluation of living conditions, safety of the environment, adequacy of supervision, and evidence of neglect or abuse (Category I). Important safety issues in the management of patients with dementia include interventions to decrease the hazards of wandering and recommendations concerning activities such as cooking, driving, hunting, and the operation of hazardous equipment. Caregivers should be referred to available books [and other materials] that provide advice and guidance about maximizing the safety of the environment for patients with dementia...As patients become more impaired, they are likely to require more supervision to remain safe, and safety issues should be addressed as part of every evaluation. Families should be advised about the possibility of accidents due to forgetfulness (e.g., fires while cooking), of difficulties coping with household emergencies, and of the possibility of wandering. Family members should also be advised to determine whether the patient is handling finances appropriately and to consider taking over the paying of bills and other responsibilities. At this stage of the disease [i.e., moderately impaired patients], nearly all patients should not drive." (1)

**For mild to moderate Alzheimer's disease**

"Assess for safety risks (e.g., driving, financial management, medication management, home safety risks that could arise from cooking or smoking, potentially dangerous behaviors such as wandering)" (2)

**COPYRIGHT:**

The Measures are not clinical guidelines, do not establish a standard of medical care, and have not been tested for all potential applications.

The Measures, while copyrighted, can be reproduced and distributed, without modification, for noncommercial purposes, e.g., use by health care providers in connection with their practices. Commercial use is defined as the sale, license, or distribution of the Measures for commercial gain, or incorporation of the Measures into a product or service that is sold, licensed or distributed for commercial gain.

Commercial uses of the Measures require a license agreement between the user and the American Medical Association (AMA), [on behalf of the Physician Consortium for Performance Improvement® (PCPI®)] or the American Academy of Neurology Institute (AANI) and the American Psychiatric Association (APA). Neither the AMA, AANI, APA, PCPI, nor its members shall be responsible for any use of the Measures.

**The AMA's and PCPI's significant past efforts and contributions to the development and updating of the Measures is acknowledged. AANI and APA are solely responsible for the review and enhancement ("Maintenance") of the Measures as of August 13, 2014.**

AANI and APA encourage use of the Measures by other health care professionals, where appropriate.

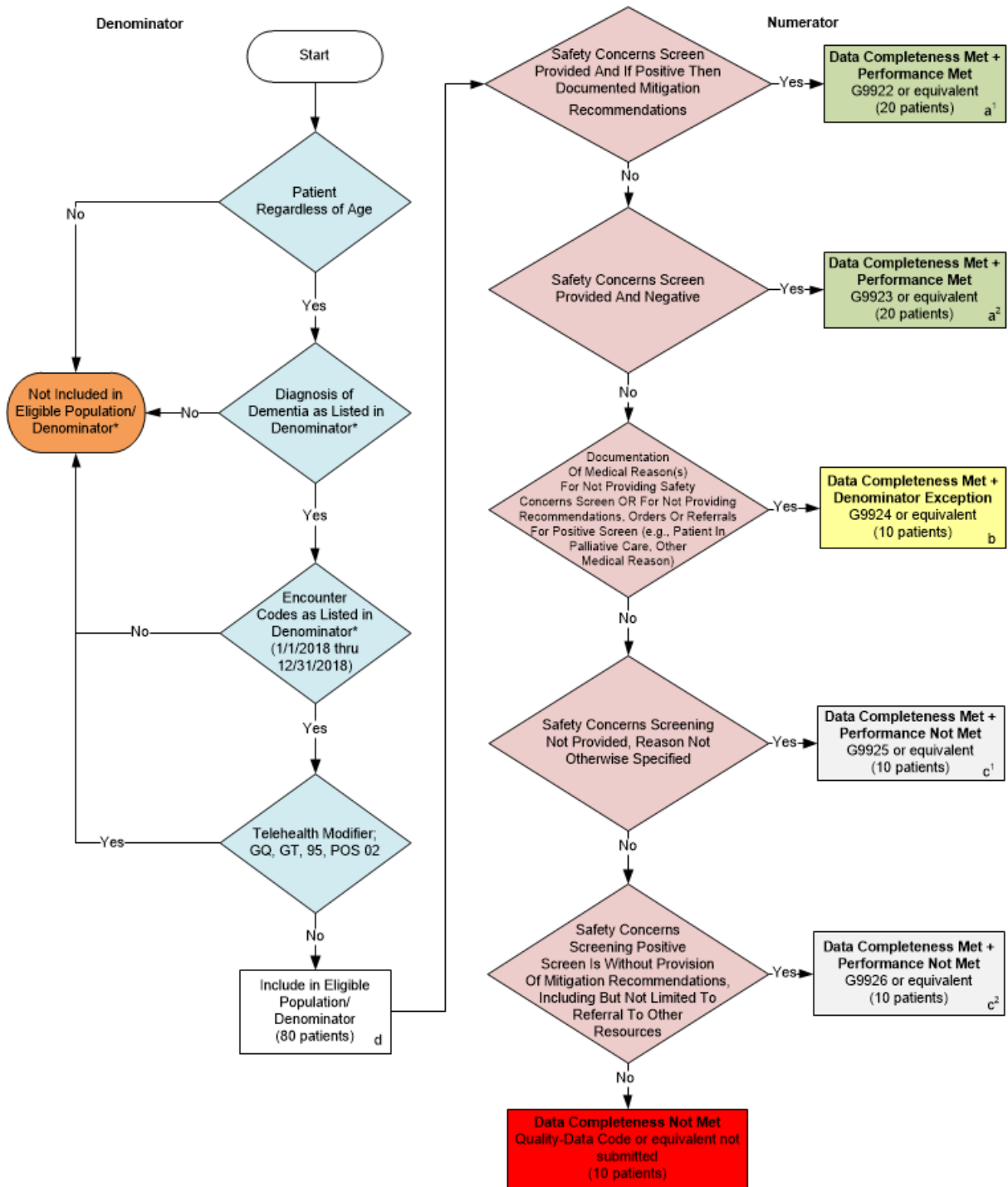
**THE MEASURES AND SPECIFICATIONS ARE PROVIDED "AS IS" WITHOUT WARRANTY OF ANY KIND.**

© 2014 American Medical Association, American Academy of Neurology Institute and American Psychiatric Association. All Rights Reserved. Applicable FARS/DFARS Restrictions Apply to Government Use.

Limited proprietary coding is contained in the Measure specifications for convenience. Users of the proprietary code sets should obtain all necessary licenses from the owners of these code sets. The AMA, AANI, APA, the PCPI and its members disclaim all liability for use or accuracy of any Current Procedural Terminology (CPT®) or other coding contained in the specifications.

CPT® contained in the Measures specifications is copyright 2004-2017 American Medical Association. LOINC® copyright 2004-2017 Regenstrief Institute, Inc. SNOMED CLINICAL TERMS (SNOMED CT®) copyright 2004-2017 College of American Pathologists. All Rights Reserved.

## 2018 Registry Flow for Quality ID #286: Dementia: Counseling Regarding Safety Concerns



\* See the posted Measure Specification for specific coding and instructions to submit this measure.

NOTE: Submission Frequency: Patient-Process

CPT only copyright 2017 American Medical Association. All rights reserved.  
The measure diagrams were developed by CMS as a supplemental resource to be used in conjunction with the measure specifications. They should not be used alone or as a substitution for the measure specification.

v2

**2018 Registry Flow for Quality ID #286:  
Dementia: Counseling Regarding Safety Concerns**

**SAMPLE CALCULATIONS:**

**Data Completeness=**  

$$\frac{\text{Performance Met (a}^1+\text{a}^2=40 \text{ patients)} + \text{Denominator Exception (b=10 patients)} + \text{Performance Not Met ((c}^1+\text{c}^2=20 \text{ patients)}}}{\text{Eligible Population / Denominator (d=80 patients)}} = \frac{70 \text{ patients}}{80 \text{ patients}} = 87.50\%$$

**Performance Rate=**  

$$\frac{\text{Performance Met (a}^1+\text{a}^2=40 \text{ patients)}}{\text{Data Completeness Numerator (70 patients) - Denominator Exception (b=10 patients)}} = \frac{30 \text{ patients}}{40 \text{ patients}} = 75.00\%$$

NOTE: Submission Frequency: Patient-Process

CPT only copyright 2017 American Medical Association. All rights reserved.  
 The measure diagrams were developed by CMS as a supplemental resource to be used  
 in conjunction with the measure specifications. They should not be used alone or as a  
 substitution for the measure specification.

v2

**2018 Registry Flow for Quality ID  
#286: Dementia: Counseling Regarding Safety Concerns**

Please refer to the specific section of the Specification to identify the denominator and numerator information for use in submitting this Individual Specification. This flow is for registry data submission.

1. Start with Denominator
2. Check Patient Age:
  - a. All Patients Regardless of Age, proceed to check Patient Diagnosis.
3. Check Patient Diagnosis:
  - a. If Diagnosis of Dementia as Listed in the Denominator equals No, do not include in Eligible Patient Population. Stop Processing.
  - b. If Diagnosis of Dementia as Listed in the Denominator equals Yes, proceed to Check Current Encounter Performed.
4. Check Encounter Performed:
  - a. If Encounter as Listed in the Denominator equals No, do not include in Eligible Patient Population. Stop Processing.
  - b. If Encounter as Listed in the Denominator equals Yes, proceed to Check Telehealth Modifier.
5. Check Telehealth Modifier:
  - a. If Telehealth Modifier equals Yes, do not include in Eligible Patient Population. Stop Processing.
  - b. If Telehealth Modifier equals No, include in Eligible Population.
6. Denominator Population:
  - a. Denominator population is all Eligible Patients in the denominator. Denominator is represented as Denominator in the Sample Calculation listed at the end of this document. Letter d equals 80 patients in the Sample Calculation.
7. Start Numerator
8. Check Safety Concerns Screen Provided And If Positive Then Documented Mitigation Recommendations:
  - a. If Safety Concerns Screen Provided And If Positive Then Documented Mitigation Recommendations equals Yes, include in Data Completeness Met and Performance Met.
  - b. Data Completeness Met and Performance Met is represented in the Data Completeness and Performance Rate in the Sample Calculation listed at the end of this document. Letter a1 equals 20 patients in Sample Calculation.
  - c. If Safety Concerns Screen Provided And If Positive Then Documented Mitigation Recommendations equals No, proceed to Check Safety Concerns Screen Provided And Negative.
9. Check Safety Concerns Screen Provided And Negative

- a. If Safety Concerns Screen Provided And Negative equals Yes, include in Data Completeness Met and Performance Met
  - b. Data Completeness Met and Performance Met is represented in the Data Completeness and Performance Rate in the Sample Calculation listed at the end of the document. Letter a2 equals 20 patients in the Sample Calculation
  - c. If Safety Concerns Screen Provided And Negative equals No, proceed to Check Documentation Of Medical Reason(S) For Not Providing Safety Concerns Screen OR For Not Providing Recommendations, Orders Or Referrals For Positive Screen (e.g., Patient In Palliative Care, Other Medical Reason).
10. Check Documentation Of Medical Reason(s) For Not Providing Safety Concerns Screen OR For Not Providing Recommendations, Orders Or Referrals For Positive Screen (e.g., Patient In Palliative Care, Other Medical Reason):
- a. If Documentation Of Medical Reason(s) For Not Providing Safety Concerns Screen OR For Not Providing Recommendations, Orders Or Referrals For Positive Screen (e.g., Patient In Palliative Care, Other Medical Reason) equals Yes, include in Data Completeness Met and Denominator Exception.
  - b. Data Completeness Met and Denominator Exception is represented in the Data Completeness and Performance Rate in the Sample Calculation listed at the end of this document. Letter b equals 10 patients in the Sample Calculation.
  - c. If Documentation Of Medical Reason(s) For Not Providing Safety Concerns Screen OR For Not Providing Recommendations, Orders Or Referrals For Positive Screen (e.g., Patient In Palliative Care, Other Medical Reason) equals No, proceed to Check Safety Concerns Screening Not Provided, Reason Not Otherwise Specified.
11. Check Safety Concerns Screening Not Provided, Reason Not Otherwise Specified:
- a. If Safety Concerns Screening Not Provided, Reason Not Otherwise Specified equals Yes, include in Data Completeness Met and Performance Not Met.
  - b. Data Completeness Met and Performance Not Met is represented in the Data Completeness in the Sample Calculation listed at the end of this document. Letter c1 equals 10 patients in the Sample Calculation.
  - c. If Safety Concerns Screening Not Provided, Reason Not Otherwise Specified equals No, proceed to Check Safety Concerns Screening Positive Screen Is Without Provision Of Mitigation Recommendations, Including But Not Limited To Referral To Other Resources.
12. Check Safety Concerns Screening Positive Screen Is Without Provision Of Mitigation Recommendations, Including But Not Limited To Referral To Other Resources:
- a. If Check Safety Concerns Screening Positive Screen Is Without Provision Of Mitigation Recommendations, Including But Not Limited To Referral To Other Resources equals Yes, include in Data Completeness Met and Performance Not Met.
  - b. Data Completeness Met and Performance Not Met is represented in the Data Completeness in the Sample Calculation listed at the end of this document. Letter c2 equals 10 patients in the Sample Calculation.



- c. If Check Safety Concerns Screening Positive Screen Is Without Provision Of Mitigation Recommendations, Including But Not Limited To Referral To Other Resources equals No, proceed to Check Data Completeness Not Met.

13. Check Data Completeness Not Met:

- a. If Data Completeness Not Met equals No, Quality Data Code or equivalent not submitted. 10 patients have been subtracted from the Data Completeness Numerator in the Sample Calculation.

**SAMPLE CALCULATIONS:**

**Data Completeness=**  

$$\frac{\text{Performance Met (a}^1\text{+a}^2\text{=40 patients) + Denominator Exception (b=10 patients) + Performance Not Met (c}^1\text{+c}^2\text{=20 patients)}}{\text{Eligible Population / Denominator (d=80 patients)}} = \frac{70 \text{ patients}}{80 \text{ patients}} = 87.50\%$$

**Performance Rate=**  

$$\frac{\text{Performance Met (a}^1\text{+a}^2\text{=40 patients)}}{\text{Data Completeness Numerator (70 patients) – Denominator Exception (b=10 patients)}} = \frac{30 \text{ patients}}{40 \text{ patients}} = 75.00\%$$