

Quality ID #422 (NQF 2063): Performing Cystoscopy at the Time of Hysterectomy for Pelvic Organ Prolapse to Detect Lower Urinary Tract Injury - National Quality Strategy Domain: Patient Safety

2018 OPTIONS FOR INDIVIDUAL MEASURES:
REGISTRY ONLY

MEASURE TYPE:
Process

DESCRIPTION:
Percentage of patients who undergo cystoscopy to evaluate for lower urinary tract injury at the time of hysterectomy for pelvic organ prolapse

INSTRUCTIONS:
This measure is to be submitted **each time** a procedure is performed during the performance period for patients who undergo a hysterectomy for pelvic organ prolapse. This measure may be submitted by eligible clinicians who perform the quality actions described in the measure based on the services provided and the measure-specific denominator coding.

Measure Submission:
The listed denominator criteria is used to identify the intended patient population. The numerator options included in this specification are used to submit the quality actions allowed by the measure. The quality-data codes listed do not need to be submitted for registry submissions; however, these codes may be submitted for those registries that utilize claims data.

DENOMINATOR:
All patients undergoing hysterectomy for pelvic organ prolapse

Denominator Criteria (Eligible Cases):

All patients, regardless of age

AND

Diagnosis for Pelvic Organ Prolapse (ICD-10-CM): N81.10, N81.11, N81.12, N81.2, N81.3, N81.4, N81.89, N81.9

AND

Patient procedure during the performance period (CPT): 58150, 58152, 58180, 58260, 58262, 58263, 58267, 58270, 58275, 58280, 58290, 58291, 58292, 58293, 58294, 58541, 58542, 58543, 58544, 58550, 58552, 58553, 58554, 58570, 58571, 58572, 58573

NUMERATOR:
Patients in whom an intraoperative cystoscopy was performed to evaluate for lower urinary tract injury at the time of hysterectomy for pelvic organ prolapse

Numerator Options:

Performance Met:

Intraoperative cystoscopy performed to evaluate for lower tract injury (**G9606**)

OR

Denominator Exception:

Documented medical reasons for not performing intraoperative cystoscopy (e.g., urethral pathology precluding cystoscopy, any patient who has a congenital or acquired absence of the urethra) or in the case of patient death (**G9607**)

OR

Performance Not Met:

Intraoperative cystoscopy not performed to evaluate for lower tract injury (G9608)

RATIONALE:

Lower urinary tract (bladder and/or ureter(s)) injury is a common complication of prolapse repair surgery, occurring in up to 5% of patients. Delay in detection of lower urinary tract injury has an estimated cost of \$54, 000 per injury (Visco et al), with significant morbidity for patients who experience them. Universal cystoscopy may detect up to 97% of all injuries at the time of surgery (Ibeanu et al, 2009), resulting in the prevention of significant morbidity and providing significant cost savings (over \$108 million per year).

There is a gap in the performance of cystoscopy at the time of hysterectomy for pelvic organ prolapse. In a recent study we found that only 84.5% (539/638) of surgeons performed cystoscopy at the time of hysterectomy for pelvic organ prolapse. As many as 97% of high volume surgeons performed a cystoscopy at the time of hysterectomy for pelvic organ prolapse while low volume surgeons performed this procedure only 75 % of the time (p<.001).

CLINICAL RECOMMENDATION STATEMENTS:

It is strongly recommended to perform cystoscopy at the conclusion of any hysterectomy done for an indication that includes uterovaginal prolapse. The cystoscopy must assess for and document at a minimum the integrity of the bladder as well as patency of the ureters.

COPYRIGHT:

This performance measure was developed and is owned by the American Urogynecologic Society ("AUGS"). This performance measures are not clinical guidelines and do not establish a standard of medical care. AUGS makes no representations, warranties, or endorsement about the quality of any organization or physician that uses or reports performance measures and AUGS has no liability to anyone who relies on such measures. AUGS holds a copyright in this measure and can rescind or alter this measure at any time. Users of the measure shall not have the right to alter, enhance, or otherwise modify the measure and shall not disassemble, recompile, or reverse engineer the source code or object code relating to the measure. Anyone desiring to use or reproduce the measure without modification for a noncommercial purpose may do so without obtaining any approval from AUGS. All commercial uses must be approved by AUGS and are subject to a license at the discretion of AUGS. Use by health care providers in connection with their own practices is not commercial use. A "commercial use" refers to any sale, license, or distribution of a measure for commercial gain, or incorporation of a measure into any product or service that is sold, licensed, or distributed for commercial gain, even if there is no actual charge for inclusion of the measure.

Performance measures developed by AUGS for CMS may look different from the measures solely created and owned by AUGS.

THE MEASURES AND SPECIFICATIONS ARE PROVIDED "AS IS" WITHOUT WARRANTY OF ANYKIND.

Limited proprietary coding from Current Procedural Terminology (CPT®) is contained in the measure specifications. Users of this code set should obtain all necessary licenses. AUGS disclaims all liability for use or accuracy of any Current Procedural Terminology (CPT®) or other coding contained in the specifications.

Physician Performance Measures (Measures) and related data specifications developed by AUGS are intended to facilitate quality improvement activities by physicians. These Measures are intended to assist physicians in enhancing quality of care. They are designed for use by any physician who manages the care of a patient for a specific condition or for diagnosis or prevention. AUGS encourages use of this Measure by other health care professionals, where appropriate.

Measures are subject to review and may be revised or rescinded at any time by AUGS. They may not be altered without the prior written approval from AUGS. Measures developed by AUGS, while copyrighted, can be reproduced and distributed, without modification, for noncommercial purposes, eg, use by health care providers in connection

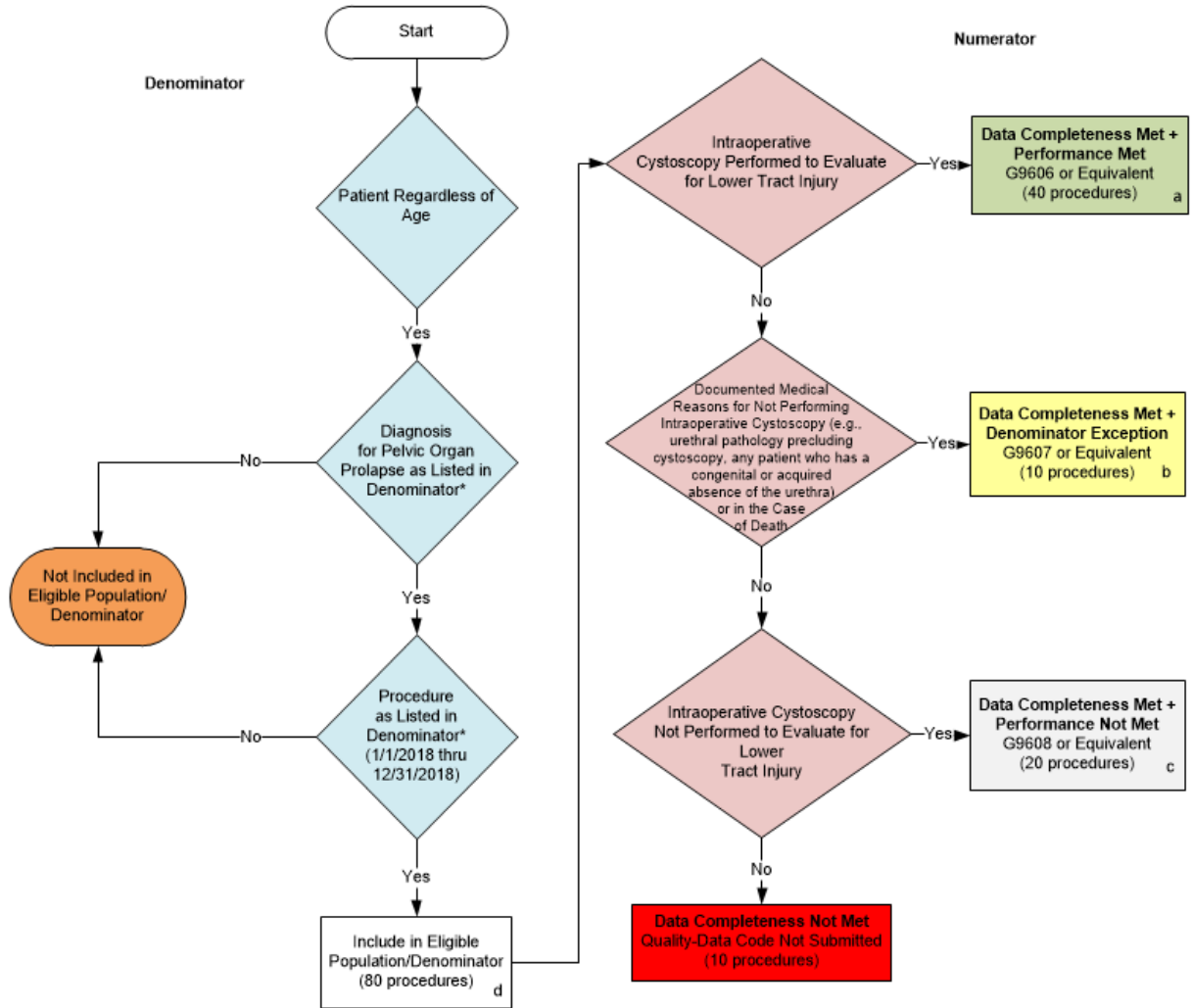
with their practices. Commercial use of the Measures is not permitted absent a license agreement between the user and AUGS. Commercial use is defined as the sale, license, or distribution of the Measures for commercial gain, or incorporation of the Measures into a product or service that is sold, licensed or distributed for commercial gain.

AUGS is not responsible for any harm to any party resulting from the use of these Measures.

Copyright © by the American Urogynecologic Society; 2025 M Street, NW, Suite 800, Washington, DC 20036. All Rights Reserved.

CPT® contained in the Measures specifications is copyright 2004-2017 American Medical Association. CPT® is a registered trademark of the American Medical Association.

2018 Registry Flow for Quality ID #422: NQF 2063: Performing Cystoscopy at the Time of Hysterectomy for Pelvic Organ Prolapse to Detect Lower Urinary Tract Injury



SAMPLE CALCULATIONS:

Data Completeness=

$$\frac{\text{Performance Met (a=40 procedures)} + \text{Denominator Exception (b=10 procedures)} + \text{Performance Not Met (c=20 procedures)}}{\text{Eligible Population / Denominator (d=80 procedures)}} = \frac{70 \text{ procedures}}{80 \text{ procedures}} = 87.50\%$$

Performance Rate=

$$\frac{\text{Performance Met (a=40 procedures)}}{\text{Data Completeness Numerator (70 procedures) - Denominator Exception (b=10 procedures)}} = \frac{40 \text{ procedures}}{60 \text{ procedures}} = 66.67\%$$

*See the posted Measure Specification for specific coding and instructions to submit this measure.

NOTE: Submission Frequency: Procedure

CPT only copyright 2017 American Medical Association. All rights reserved. The measure diagrams were developed by CMS as a supplemental resource to be used in conjunction with the measure specifications. They should not be used alone or as a substitution for the measure specification.

v2

2018 Registry Flow for Quality ID

#422: NQF# 2063: Performing Cystoscopy at the Time of Hysterectomy for Pelvic Organ Prolapse to Detect Lower Urinary Tract Injury

Please refer to the specific section of the specification to identify the denominator and numerator information for use in submitting this Individual Specification. This flow is for registry data submission.

1. Start with Denominator
2. Check Patient Age:
 - a. All Patients Regardless of Age, proceed to check Patient Diagnosis.
3. Check Patient Diagnosis:
 - a. If Diagnosis for Pelvic Organ Prolapse as Listed in the Denominator equals No, do not include in Eligible Patient Population. Stop Processing.
 - b. If Diagnosis for Pelvic Organ Prolapse as Listed in the Denominator equals Yes, proceed to check Encounter Performed.
4. Check Encounter Performed:
 - a. If Encounter as Listed in the Denominator equals No, do not include in Eligible Patient Population. Stop Processing.
 - b. If Encounter as Listed in the Denominator equals Yes, include in Eligible Population.
5. Denominator Population:
 - a. Denominator Population is all Eligible Patients in the Denominator. Denominator is represented as Denominator in the Sample Calculation listed at the end of this document. Letter d equals 80 procedures in the sample calculation.
6. Start Numerator
7. Check Intraoperative Cystoscopy Performed:
 - a. If Intraoperative Cystoscopy Performed for Lower Tract Injury equals Yes, include in Data Completeness Met and Performance Met.
 - b. Data Completeness Met and Performance Met letter is represented in the Data Completeness and Performance Rate in the Sample Calculation listed at the end of this document. Letter a equals 40 procedures in the Sample Calculation.
 - c. If Intraoperative Cystoscopy Performed for Lower Tract Injury equals No, proceed to Intraoperative Cystoscopy Not Performed, Documented Medical Reasons.
8. Check Documented Medical Reasons for not Performing Intraoperative Cystoscopy:
 - a. If Documented Medical Reasons for not Performing Intraoperative Cystoscopy equals Yes, include in Data Completeness Met and Denominator Exception.
 - b. Data Completeness Met and Denominator Exception letter is represented in the Data Completeness

and Performance Rate in the Sample Calculation listed at the end of this document. Letter b equals 10 procedures in the Sample Calculation.

- c. If Documented Medical Reasons for not Performing Intraoperative Cystoscopy equals No, proceed to Intraoperative Cystoscopy Not Performed.
9. Check Intraoperative Cystoscopy Not Performed for Lower Tract Injury:
- a. If Intraoperative Cystoscopy Not Performed for Lower Tract Injury equals Yes, include in Data Completeness Met and Performance Not Met.
 - b. Data Completeness Met and Performance Not Met letter is represented in the Data Completeness and Performance Rate in the Sample Calculation listed at the end of this document. Letter c equals 20 procedures in the Sample Calculation.
 - c. If Intraoperative Cystoscopy Not Performed for Lower Tract Injury equals No, proceed to Data Completeness Not Met.
10. Check Data Completeness Not Met:
- a. If Data Completeness Not Met equals No, Quality Data Code or equivalent not submitted. 10 procedures have been subtracted from the Data Completeness Numerator in the Sample Calculation.

SAMPLE CALCULATIONS:

Data Completeness=

$$\frac{\text{Performance Met (a=40 procedures)} + \text{Denominator Exception (b=10 procedures)} + \text{Performance Not Met (c=20 procedures)}}{\text{Eligible Population / Denominator (d=80 procedures)}} = \frac{70 \text{ procedures}}{80 \text{ procedures}} = 87.50\%$$

Performance Rate=

$$\frac{\text{Performance Met (a=40 procedures)}}{\text{Data Completeness Numerator (70 procedures) - Denominator Exception (b=10 procedures)}} = \frac{40 \text{ procedures}}{60 \text{ procedures}} = 66.67\%$$