

Measure #205 (NQF 0409): HIV/AIDS: Sexually Transmitted Disease Screening for Chlamydia, Gonorrhea, and Syphilis – National Quality Strategy Domain: Effective Clinical Care

2016 PQRS OPTIONS FOR INDIVIDUAL MEASURES:
REGISTRY ONLY

DESCRIPTION:

Percentage of patients aged 13 years and older with a diagnosis of HIV/AIDS for whom chlamydia, gonorrhea, and syphilis screenings were performed at least once since the diagnosis of HIV infection

INSTRUCTIONS:

This measure is to be reported a minimum of **once per reporting period** for patients with HIV/AIDS seen during the reporting period. Only patients who had at least two visits during the reporting period, with at least 90 days between each visit will be counted in the denominator for this measure. This measure is intended to reflect the quality of services provided for the primary management of patients with HIV/AIDS.

Measure Reporting via Registry:

ICD-10-CM diagnosis codes, CPT or HCPCS codes, and patient demographics are used to identify patients who are included in the measure's denominator. The listed numerator options are used to report the numerator of the measure.

The quality-data codes listed do not need to be submitted for registry-based submissions; however, these codes may be submitted for those registries that utilize claims data.

DENOMINATOR:

Patients aged 13 and older with a diagnosis of HIV/AIDS who had at least two medical visits during the measurement year, with at least 90 days between each visit

Denominator Criteria (Eligible Cases):

Patients aged ≥ 13 years of age on date of encounter

AND

Diagnosis for HIV/AIDS (ICD-10-CM): Z21, B20

AND

Patient encounters during the reporting period (CPT or HCPCS): 99201, 99202, 99203, 99204, 99205, 99211, 99212, 99213, 99214, 99215, G0402

AND

At Least Two Denominator Eligible Encounters During the Measurement Year, With at Least 90 days Between Each

NUMERATOR:

Patients with chlamydia, gonorrhea, and syphilis screenings performed at least once since the diagnosis of HIV infection

NUMERATOR NOTE: Report **G9228** when results are documented for all of the 3 screenings

Numerator Options:

Performance Met:

Chlamydia, gonorrhea and syphilis screening results documented (report when results are present for all of the 3 screenings) (**G9228**)

OR

Other Performance Exclusion:

Chlamydia, gonorrhea, and syphilis screening results not documented (Patient refusal is the only allowed exclusion) (**G9229**)

OR

Performance Not Met:

Chlamydia, gonorrhea, and syphilis screening results not documented as performed, reason not given (**G9230**)

RATIONALE:

Sexually transmitted diseases that cause mucosal inflammation (such as gonorrhea and chlamydia) increase the risk for HIV-infection (as these diseases and other sexually transmitted diseases can increase the infectiousness of and a person's susceptibility to HIV) (Galvin, 2004).

CLINICAL RECOMMENDATION STATEMENTS:

All patients should be screened with laboratory tests for STDs at the initial encounter (A-II for syphilis, for trichomoniasis in women, and for chlamydial infection in women aged less than 25 years; B-II for gonorrhea and chlamydial infection in all men and women), and thereafter, depending on reported high-risk behavior, the presence of other STDs, and the prevalence of STDs in the community (B-III). (Aberg, 2004)

Consideration should be given to screening all HIV-infected men and women for gonorrhea and chlamydial infections. However, because of the cost of screening and the variability of prevalence of these infections, decisions about routine screening for these infections should be based on epidemiologic factors (including prevalence of infection in the community or the population being served), availability of tests, and cost. (Some HIV specialists also recommend type-specific serologic testing for herpes simplex virus type 2 for both men and women.) (B-II, for identifying STDs) (CDC, HRSA, NIH, HIVMA of IDSA, 2003)

COPYRIGHT:

Physician Performance Measures (Measures) and related data specifications, developed by the American Medical Association (AMA)-convened Physician Consortium for Performance Improvement® (PCPI®) and the National Committee for Quality Assurance (NCQA) pursuant to government sponsorship under subcontract 6205-05-054 with Mathematica Policy Research, Inc. under contract 500-00-0033 with Centers for Medicare & Medicaid Services.

These performance Measures are not clinical guidelines and do not establish a standard of medical care, and have not been tested for all potential applications.

The Measures, while copyrighted, can be reproduced and distributed, without modification, for noncommercial purposes, eg, use by health care providers in connection with their practices. Commercial use is defined as the sale, license, or distribution of the Measures for commercial gain, or incorporation of the Measures into a product or service that is sold, licensed or distributed for commercial gain. Commercial uses of the Measures require a license agreement between the user and the AMA, (on behalf of the PCPI) or NCQA. Neither the AMA, NCQA, PCPI nor its members shall be responsible for any use of the Measures.

THE MEASURES AND SPECIFICATIONS ARE PROVIDED "AS IS" WITHOUT WARRANTY OF ANY KIND.

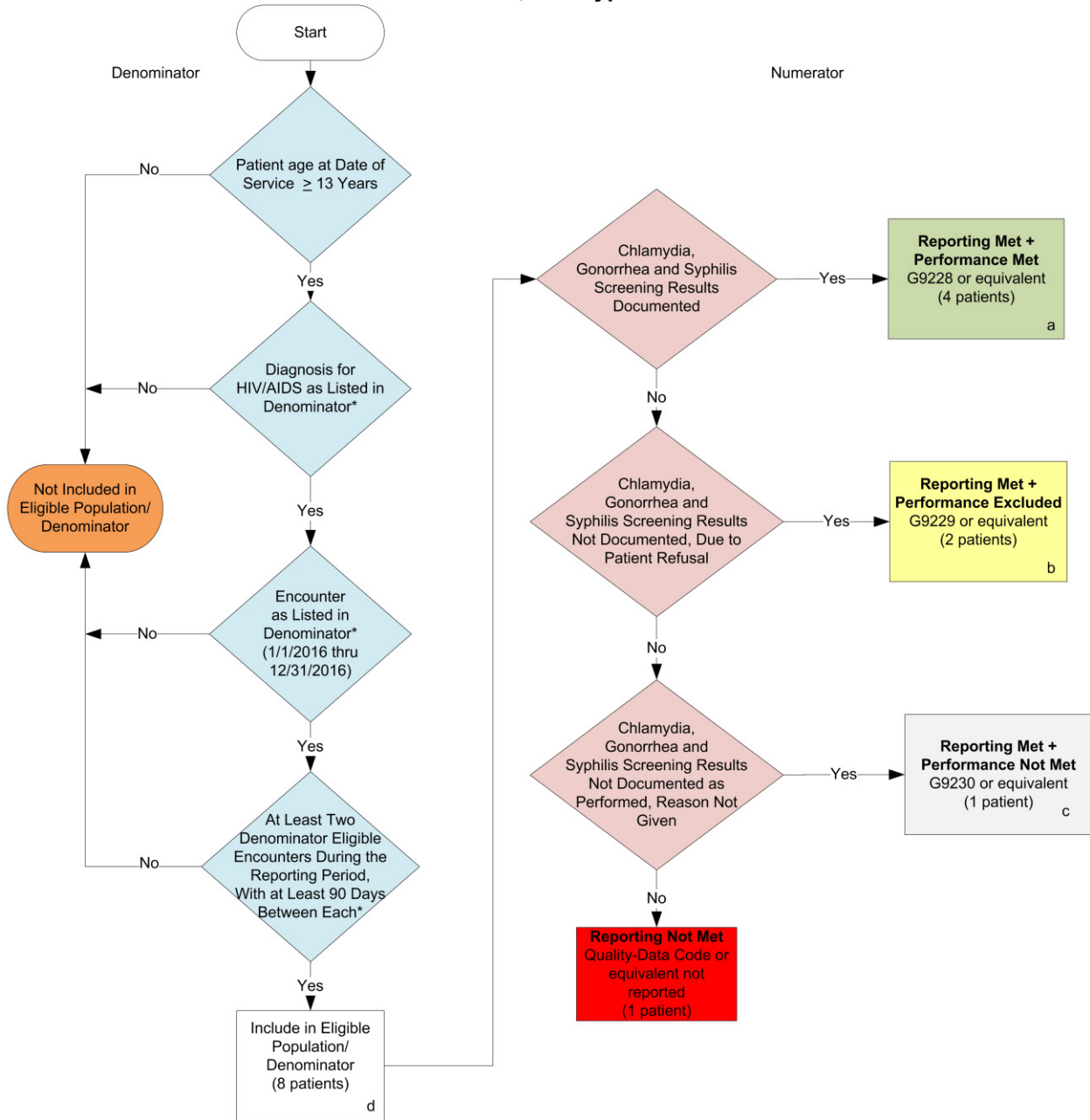
© 2004-6 American Medical Association and National Committee for Quality Assurance. All Rights Reserved.

Limited proprietary coding is contained in the Measure specifications for convenience. Users of the proprietary code sets should obtain all necessary licenses from the owners of these code sets. The AMA, NCQA, the PCPI and its members disclaim all liability for use or accuracy of any Current Procedural Terminology (CPT®) or other coding contained in the specifications.

CPT® contained in the Measures specifications is copyright 2004-2015 American Medical Association. G codes and associated descriptions included in these Measure specifications are in the public domain.

LOINC® copyright 2004-2015 Regenstrief Institute, Inc. SNOMED CLINICAL TERMS (SNOMED CT®) copyright 2004-2015 International Health Terminology Standards Development Organization. All Rights Reserved. Use of SNOMED CT® is only authorized within the United States.

2016 Registry Individual Measure Flow
PQRS #205 NQF #0409: HIV/AIDS: Sexually Transmitted Disease Screening for Chlamydia, Gonorrhea, and Syphilis



SAMPLE CALCULATIONS:

Reporting Rate=

$$\frac{\text{Performance Met (a=4 patients)} + \text{Performance Excluded (b=2 patients)} + \text{Performance not Met (c=1 patient)}}{\text{Eligible Population / Denominator (d=8 patients)}} = \frac{7 \text{ patients}}{8 \text{ patients}} = 87.50\%$$

Performance Rate=

$$\frac{\text{Performance Met (a= 4 patients)}}{\text{Reporting Numerator (7 patients) - Performance Exclusion (b=2 patients)}} = \frac{4 \text{ patients}}{5 \text{ patients}} = 80\%$$

*See the posted Measure Specification for specific coding and instructions to report this measure.

NOTE: Reporting Frequency: Patient-process

CPT only copyright 2015 American Medical Association. All rights reserved.
 The measure diagrams were developed by CMS as a supplemental resource to be used in conjunction with the measure specifications. They should not be used alone or as a substitution for the measure specification.

v2

2016 Registry Individual Measure Flow
**PQRS #205 NQF #0409: HIV/AIDS: Sexually Transmitted Disease Screening for Chlamydia,
Gonorrhea, and Syphilis**

Please refer to the specific section of the Measure Specification to identify the denominator and numerator information for use in reporting this Individual Measure.

1. Start with Denominator
2. Check Patient Age:
 - a. If the Age is greater than or equal to 13 years of age at Date of Service and equals No during the measurement period, do not include in Eligible Patient Population. Stop Processing.
 - b. If the Age is greater than or equal to 13 years of age at Date of Service and equals Yes during the measurement period, proceed to check Patient Diagnosis.
3. Check Patient Diagnosis:
 - a. If Diagnosis for HIV/AIDS as Listed in the Denominator equals No, do not include in Eligible Patient Population. Stop Processing.
 - b. If Diagnosis for HIV/AIDS as Listed in the Denominator equals Yes, proceed to check Encounter Performed.
4. Check Encounter Performed:
 - a. If Encounter as Listed in the Denominator equals No, do not include in Eligible Patient Population. Stop Processing.
 - b. If Encounter as Listed in the Denominator equals Yes, proceed to check At Least Two Denominator Eligible Encounters During the Reporting Period, With at Least 90 Days Between Each.
5. Check At Least Two Denominator Eligible Encounters During the Reporting Period, With at Least 90 Days Between Each:
 - a. If At Least Two Denominator Eligible Encounters During the Reporting Period, With at Least 90 Days Between Each equals No, do not include in Eligible Patient Population. Stop Processing.
 - b. If At Least Two Denominator Eligible Encounters During the Reporting Period, With at Least 90 Days Between Each equals Yes, include in the Eligible Population.
6. Denominator Population:
 - a. Denominator population is all Eligible Patients in the denominator. Denominator is represented as Denominator in the Sample Calculation listed at the end of this document. Letter d equals 8 patients in the sample calculation.
7. Start Numerator
8. Check Chlamydia, Gonorrhea and Syphilis Screenings Documented as Performed:
 - a. If Chlamydia, Gonorrhea and Syphilis Screening Results Documented equals Yes, include in Reporting Met and Performance Met.

- b. Reporting Met and Performance Met letter is represented in the Reporting Rate and Performance Rate in the Sample Calculation listed at the end of this document. Letter a equals 4 patients in Sample Calculation.
 - c. If Chlamydia, Gonorrhea and Syphilis Screening Results Documented as Performed equals No, proceed to Chlamydia, Gonorrhea and Syphilis Screening Results Not Documented, Due to Patient Refusal.
9. Check Chlamydia, Gonorrhea and Syphilis Screening Results Not Documented, Due to Patient Refusal:
- a. If Chlamydia, Gonorrhea and Syphilis Screening Results Not Documented, Due to Patient Refusal equals Yes, include in Reporting Met and Performance Exclusion.
 - b. Reporting Met and Performance Exclusion letter is represented in the Reporting Rate and Performance Rate in the Sample Calculation listed at the end of this document. Letter b equals 2 patients in the Sample Calculation.
 - c. If Chlamydia, Gonorrhea and Syphilis Screening Results Not Documented, Due to Patient Refusal equals No, proceed to Check Chlamydia, Gonorrhea and Syphilis Screening Results Not Documented as Performed, Reason Not Given.
10. Check Chlamydia, Gonorrhea and Syphilis Screening Results Not Documented as Performed, Reason Not Given:
- a. If Chlamydia, Gonorrhea and Syphilis Screening Results Not Documented as Performed, Reason Not Given equals Yes, include in Reporting Met and Performance Not Met.
 - b. Reporting Met and Performance Not Met letter is represented in the Reporting Rate and Performance Rate in the Sample Calculation listed at the end of this document. Letter c equals 1 patient in the Sample Calculation.
 - c. If Chlamydia, Gonorrhea and Syphilis Screening Results Not Documented as Performed, Reason Not Given equals No, proceed to Reporting not Met
11. Check Reporting Not Met:
- a. If Reporting Not Met equals No, Quality Data Code or equivalent not reported. 1 patient has been subtracted from the reporting numerator in the sample calculation.

SAMPLE CALCULATIONS:

Reporting Rate=

$$\frac{\text{Performance Met (a=4 patients) + Performance Excluded (b=2 patients) + Performance not Met (c=1 patient)}}{\text{Eligible Population / Denominator (d=8 patients)}} = \frac{7 \text{ patients}}{8 \text{ patients}} = 87.50\%$$

Performance Rate=

$$\frac{\text{Performance Met (a= 4 patients)}}{\text{Reporting Numerator (7 patients) - Performance Exclusion (b=2 patients)}} = \frac{4 \text{ patients}}{5 \text{ patients}} = 80\%$$